

NO.	DATE	BY	REVISIONS
1			
2			
3			
4			
5			
6			

REVIEWED BY SECTIONS	DATE	APPROVED BY
ARCHITECTURAL		
ENGINEERING		
LANDSCAPE		

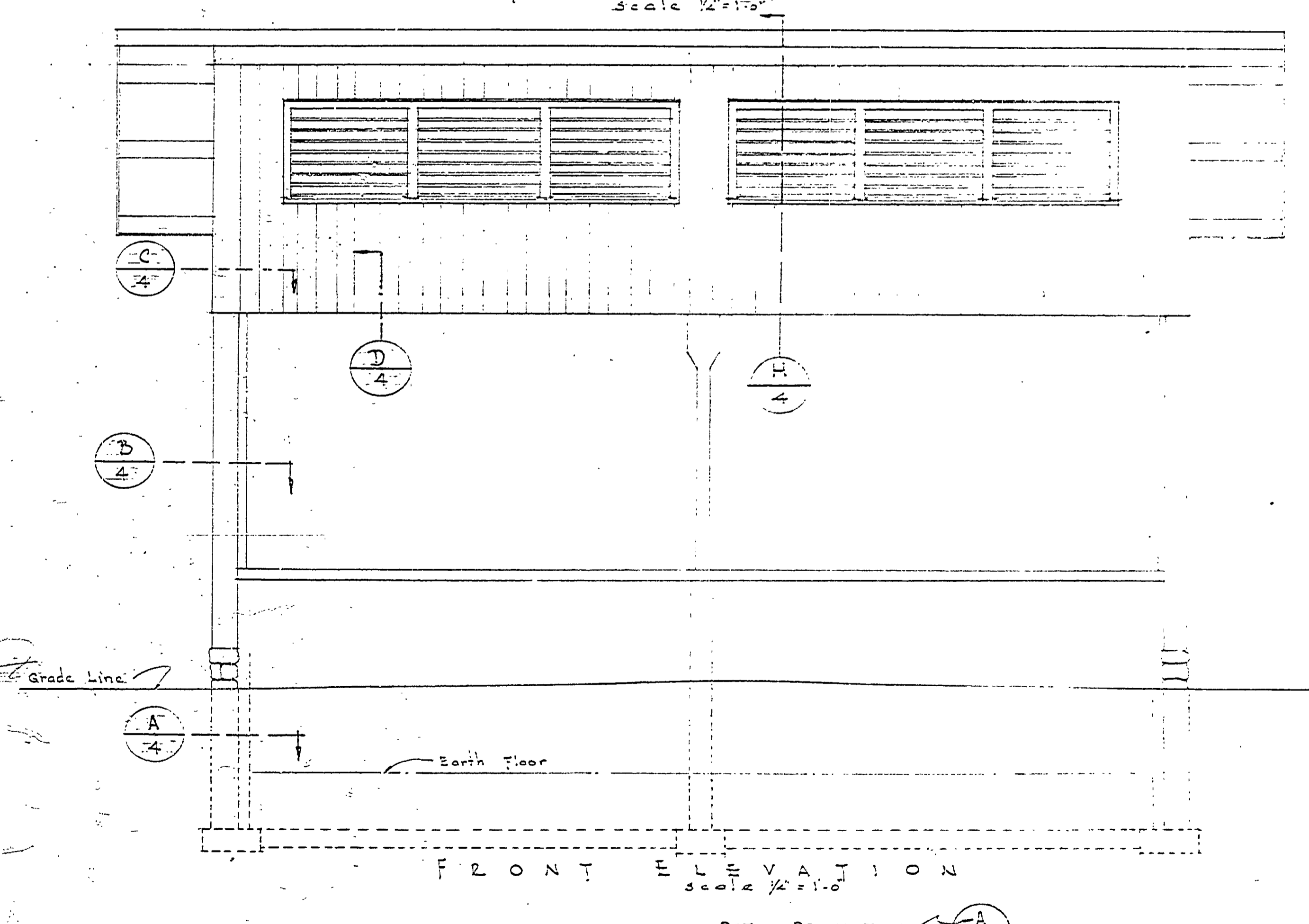
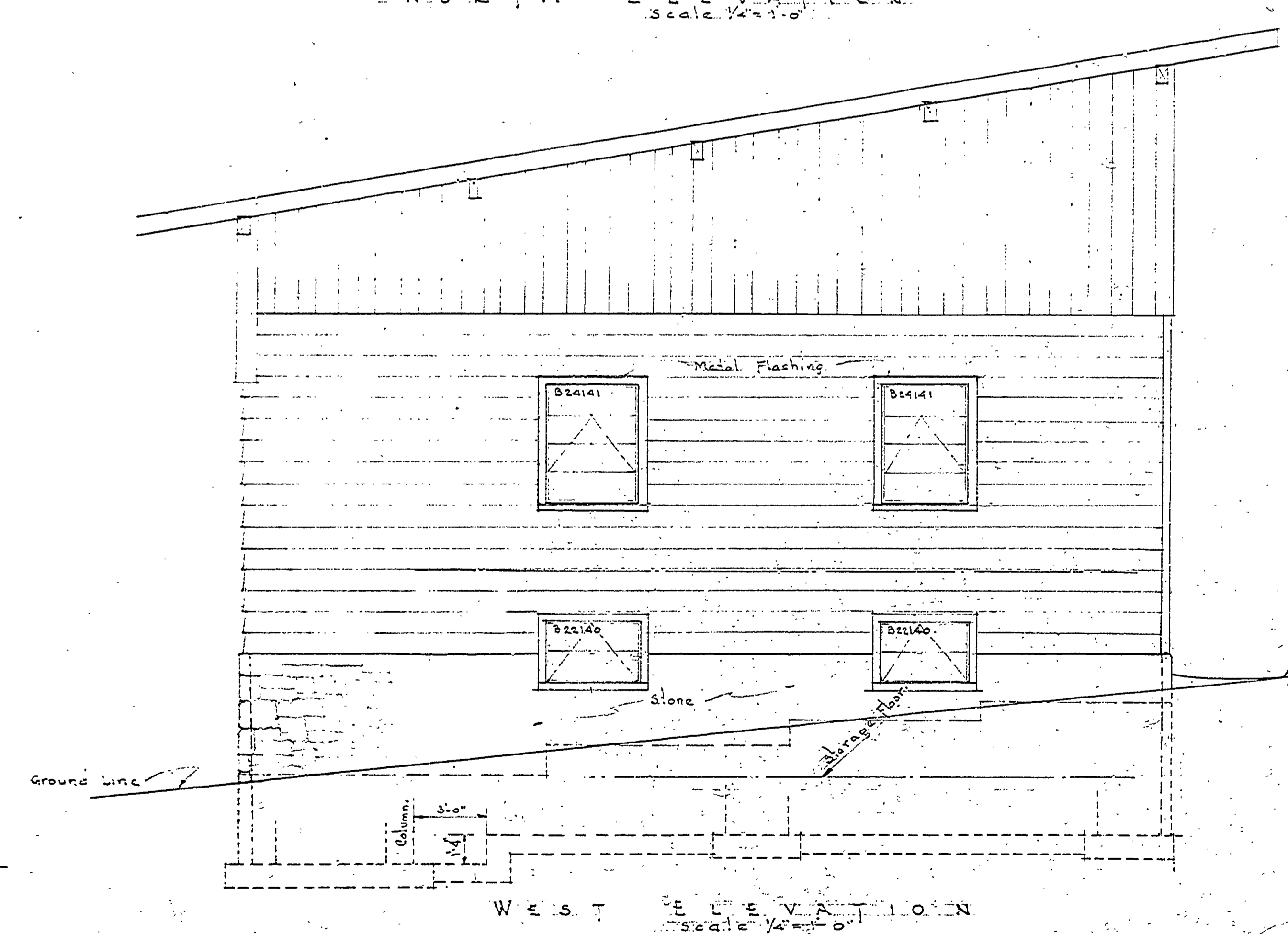
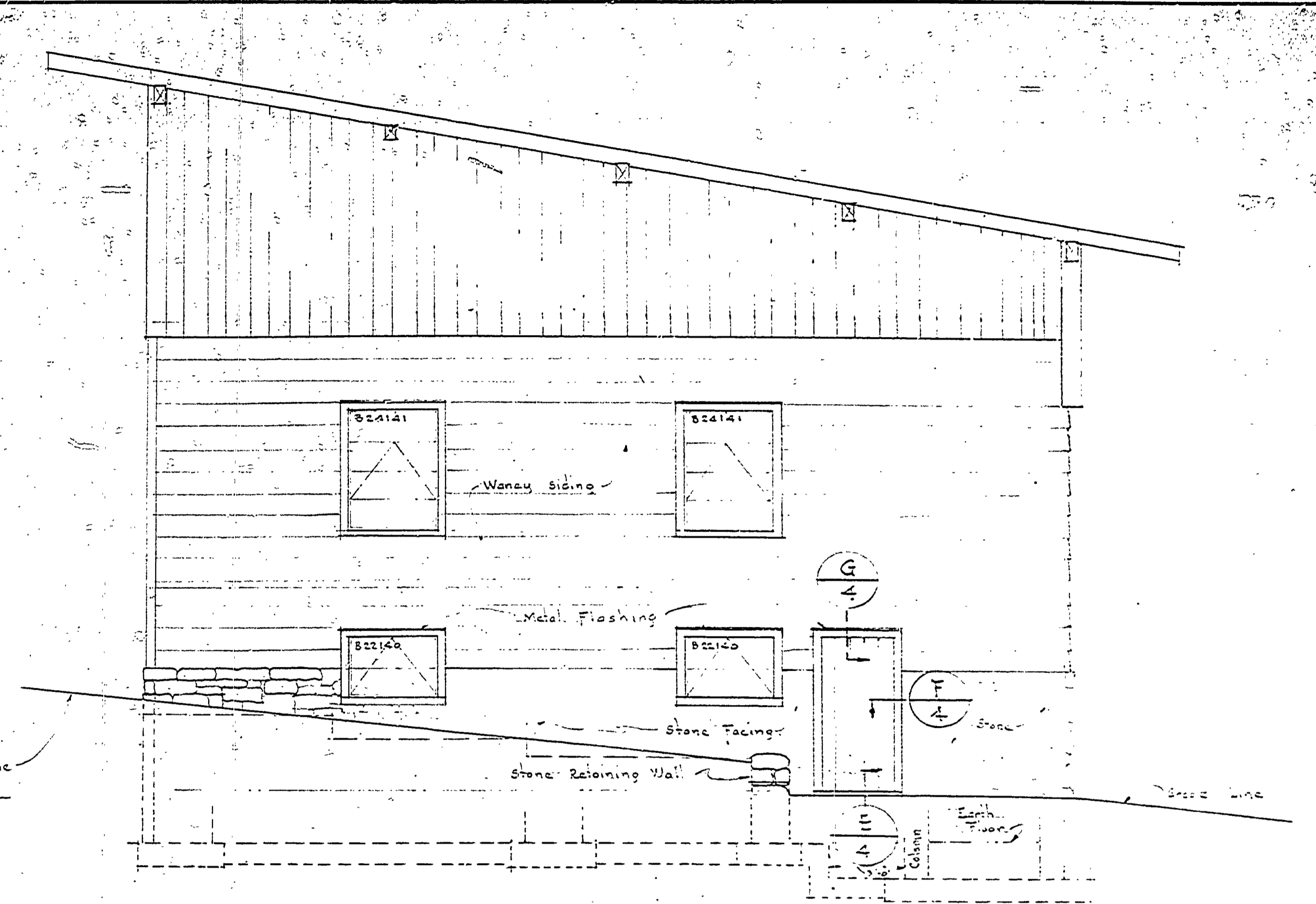
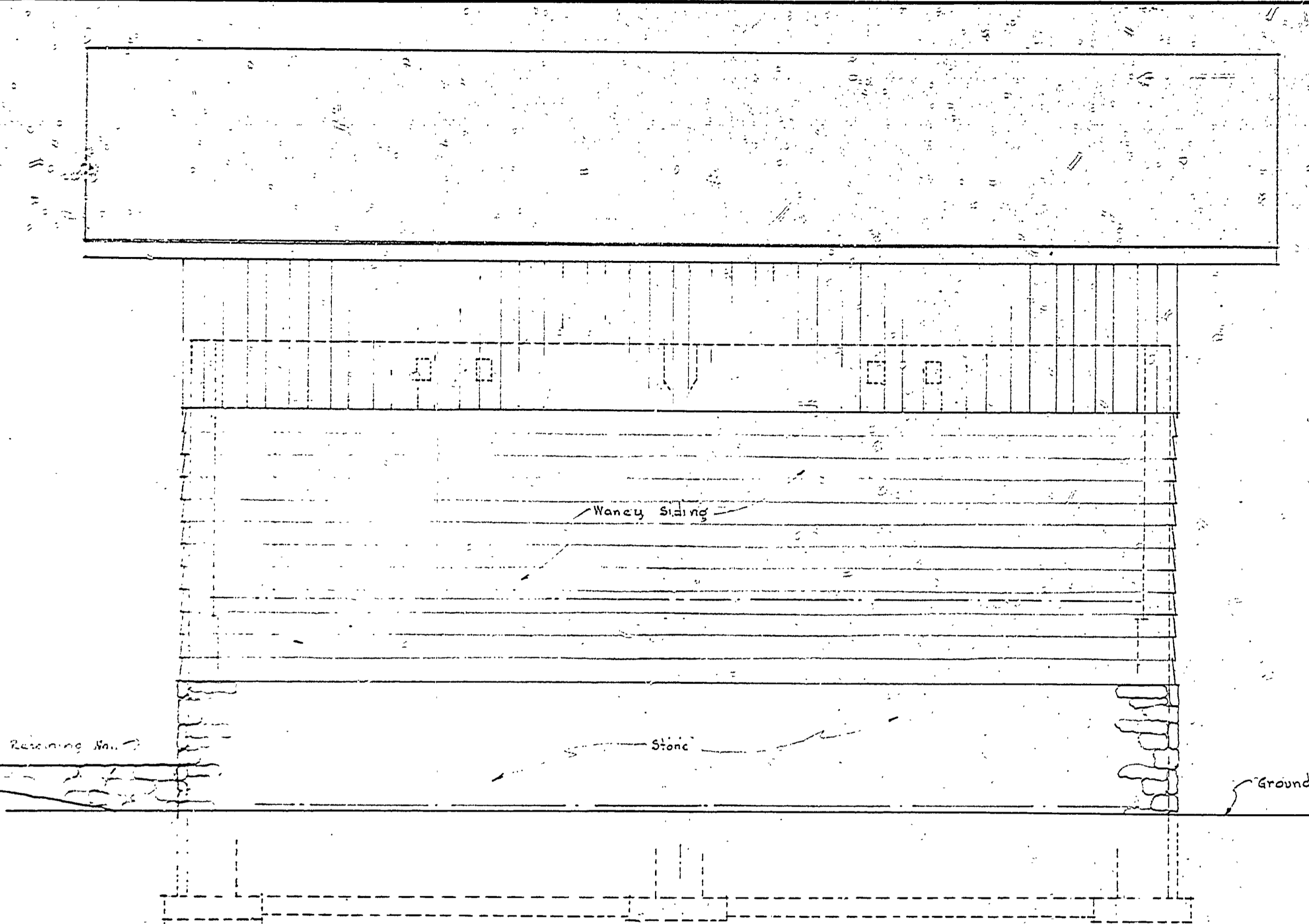
NO.	DATE	BY
1		
2		
3		

DATE	BY
2-24-57	J.H.K.
4-16-57	J.T.R.

DRAWN BY: J.W. Fish  
 CHECKED BY: J.H.K.  
 DATE: 2-24-57



NOTE: Waterproof exterior wall to grade below core back fillings.  
 SECTION 2-2  
 Scale 3/4"=1'-0"

MICHIGAN  
 DEPARTMENT OF CONSERVATION  
 PARKS AND RECREATION DIVISION

PORCUPINE MOUNTAIN RECREATION AREA  
 LOWER TERMINAL BUILDING  
 SKI LIFT

SHEET NO. 3 OF 3  
 PLAN NO. A-112

DETAIL DESIGNATION: A-7  
 SHEET NO. WHERE DETAIL IS TAKEN OR WHERE DETAIL APPEARS