

DESIGNED BY	DATE	REVIEWED	DATE	APPROVED	DATE	NO.	DATE	BY	REVISIONS
ARCHITECTURAL	2-27-64	ARCHITECTURAL	2-27-64		1	1	1		4
ENGINEERING	2-18-64	ENGINEERING	2-18-64		2	2	2		5
LANDSCAPE	2-22-64	LANDSCAPE	2-22-64		3	3	3		6

MICHIGAN DEPARTMENT OF CONSERVATION  
DIVISION OF PARKS AND RECREATION

**PORCUPINE MOUNTAIN STATE PARK  
PRESQUE ISLE SECTION**

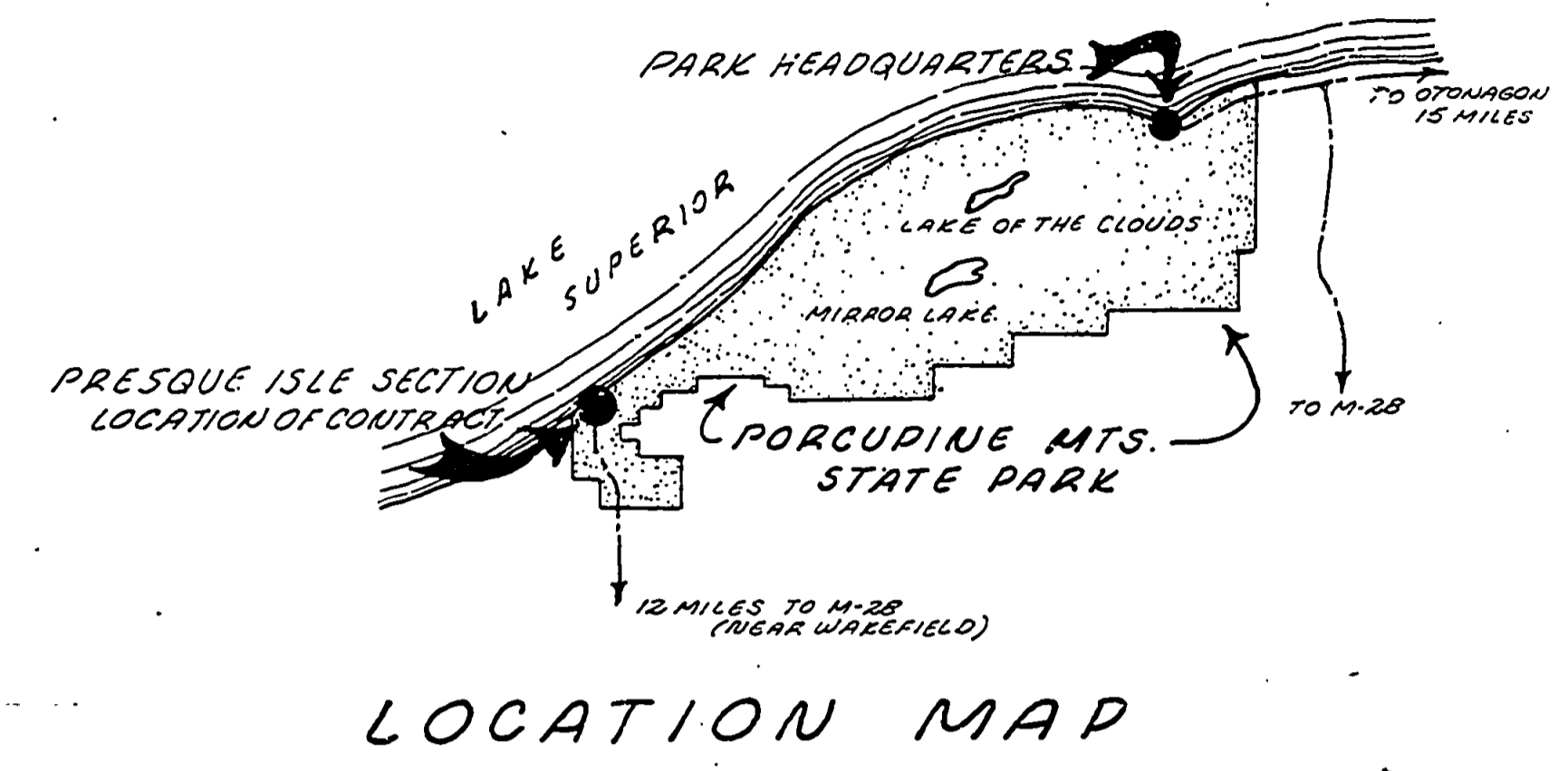
CONSTRUCTION PLANS FOR

**TOILET & SHOWER BUILDING  
AND  
ENTRANCE BUILDING**

CONTRACT NO. 976-002-9-C5

*Arthur J. Jones*  
CHIEF, PARKS & RECREATION DIV.

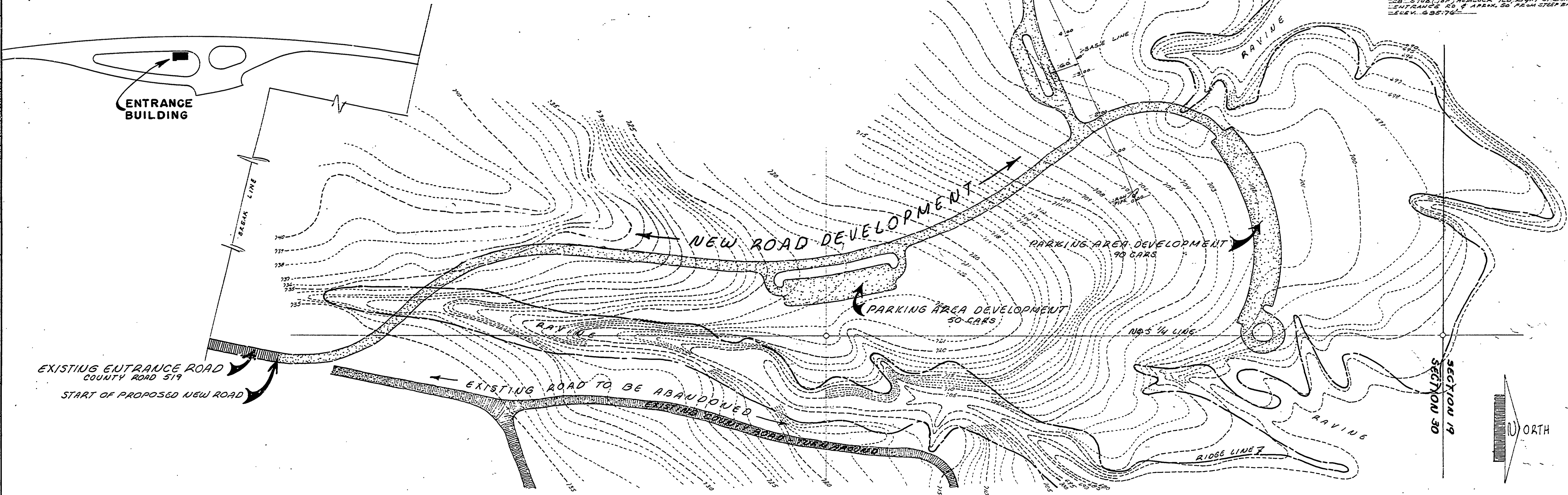
*2/28/64*  
DATE



**INDEX OF SHEETS**

SHEET NO.	DESCRIPTION
1 OF 4	COVER SHEET
2 OF 4	FOUNDATION & FL. PLAN
3 OF 4	TOILET & SHOWER BLDG. PLUMBING & ELECTRICAL PLANS - TOILET & SHOWER BLDG.
4 OF 4	SIGN & MISC. DETAILS
1 OF 1	ENTRANCE BUILDING

B.M. 7 - PK. NAIL & WASHES IN S. FOOT OF BLAZED 220' STUB (TOP) HEMLOCK, 150' EIGHT OREGON SPRUCE CO. & ASPEN, 50' ASH & STEEP BANK ELEV. 635.76'



SCALE 1" = 100'

MICHIGAN DEPARTMENT OF CONSERVATION  
PARKS AND RECREATION DIVISION

PORCUPINE MOUNTAIN STATE PARK  
TOILET & SHOWER BLDG. - ENTRANCE BLDG.  
PRESQUE ISLE SECTION

SHEET NO. 1 OF 4  
PLAN NO. A-713

old. 50' M.P.