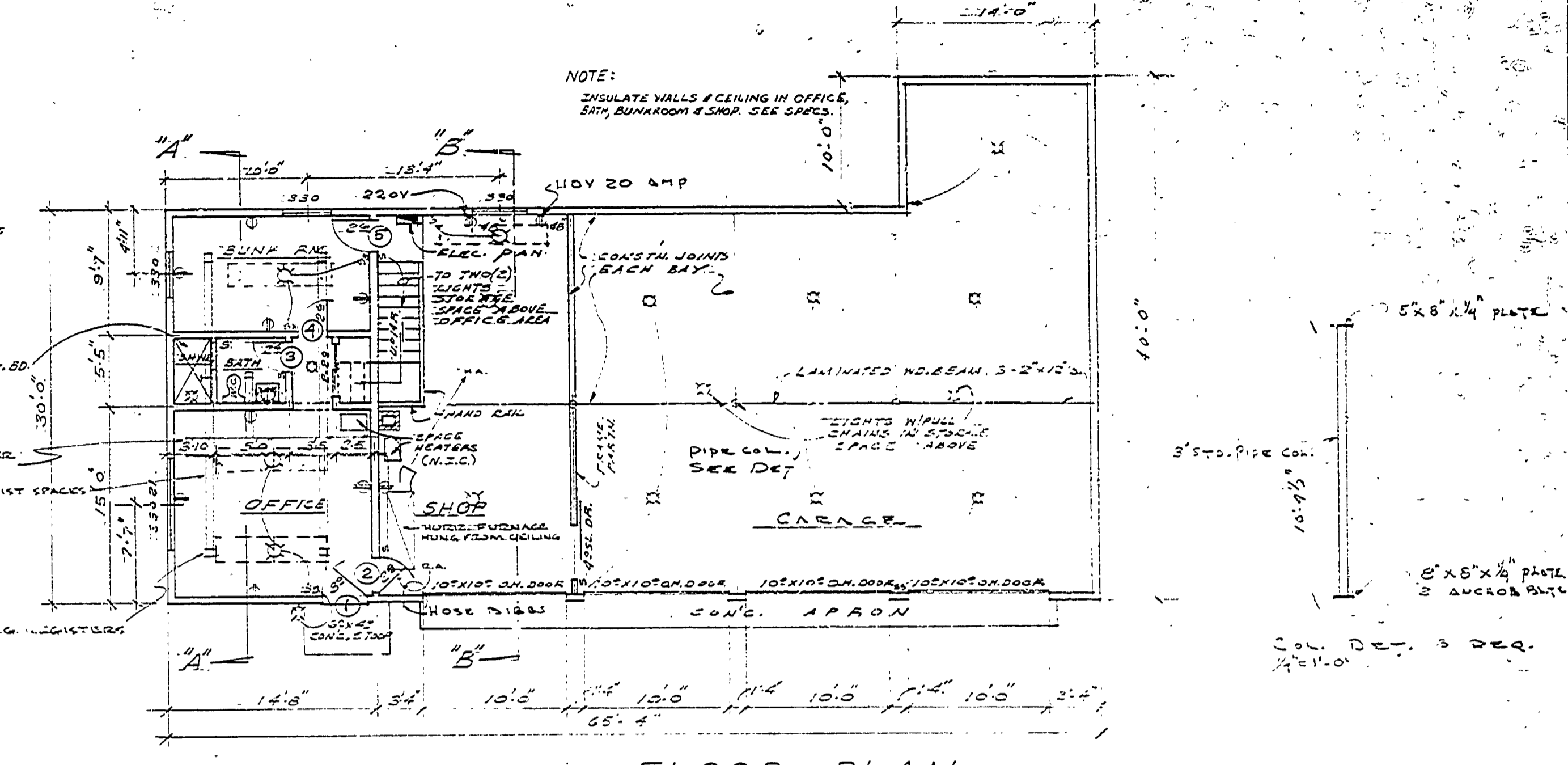
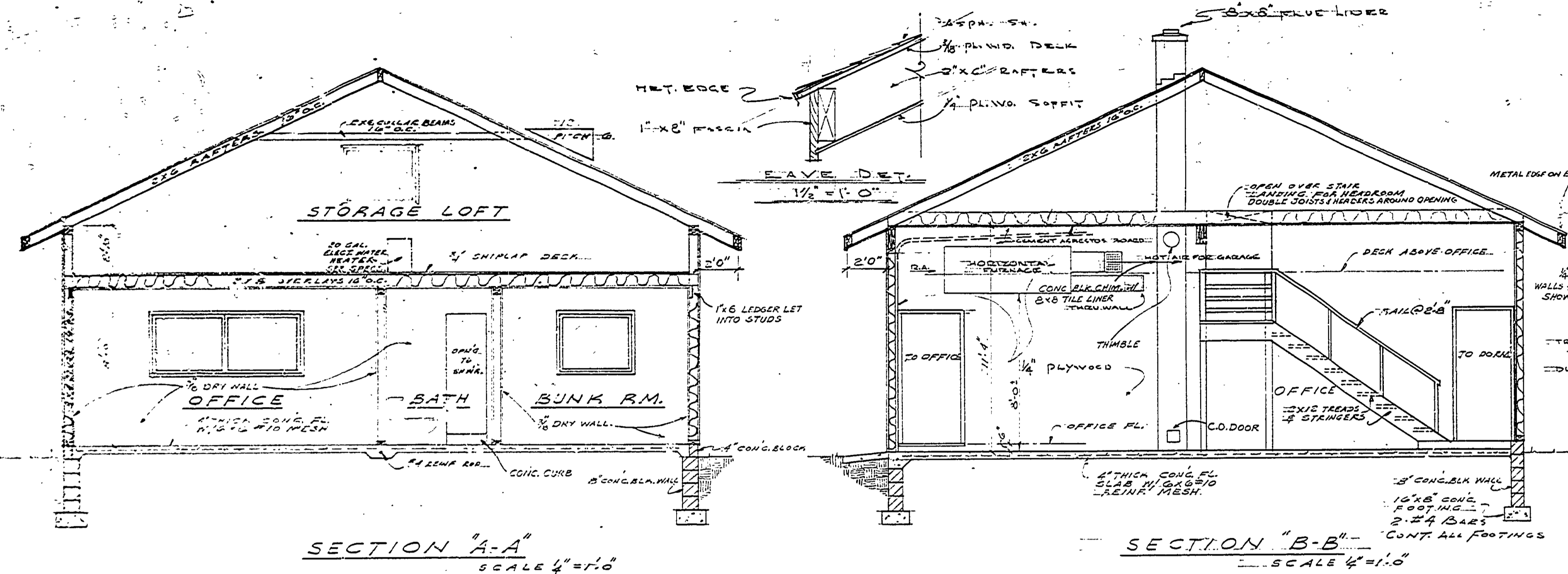
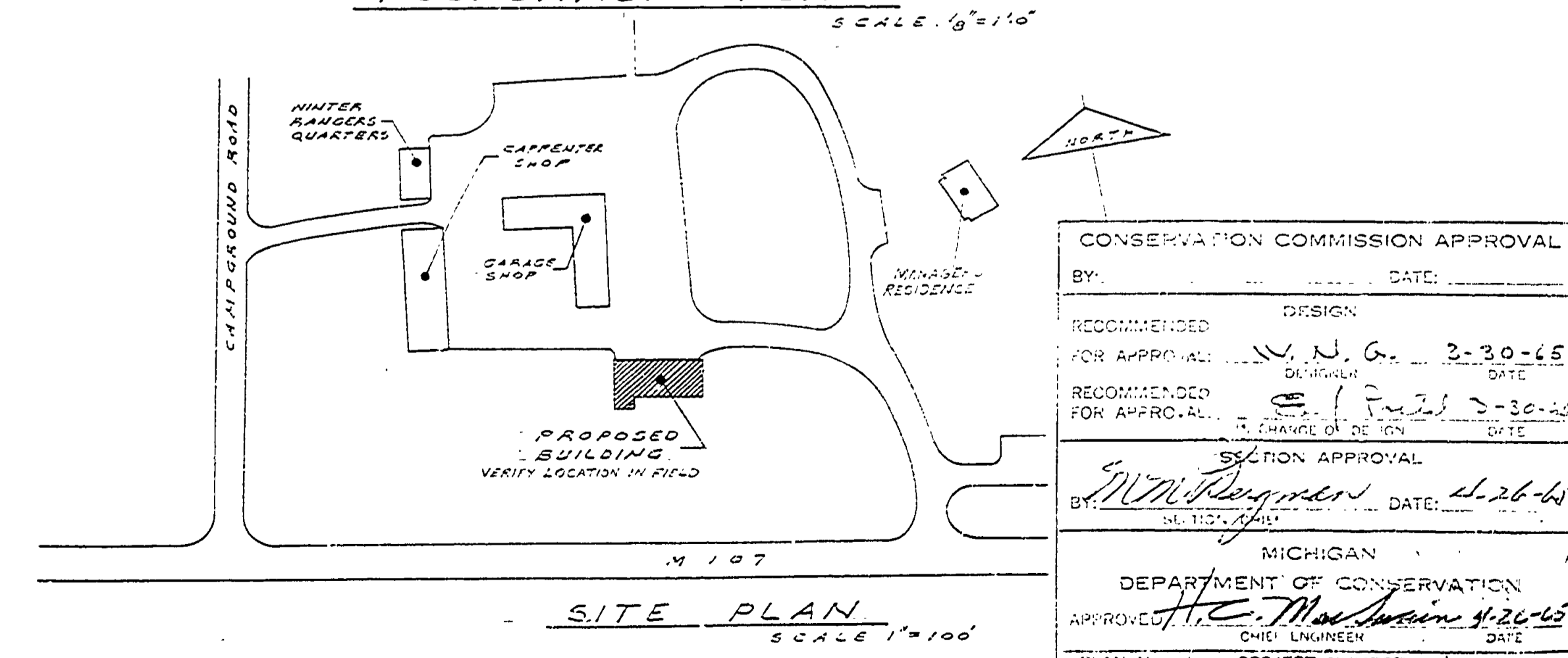
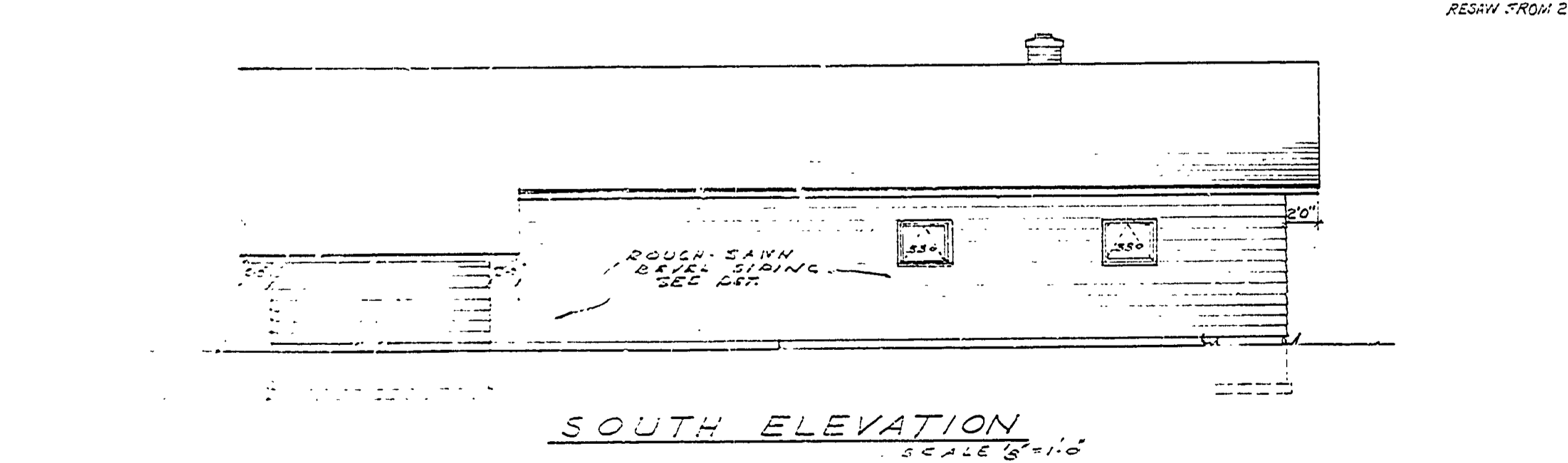
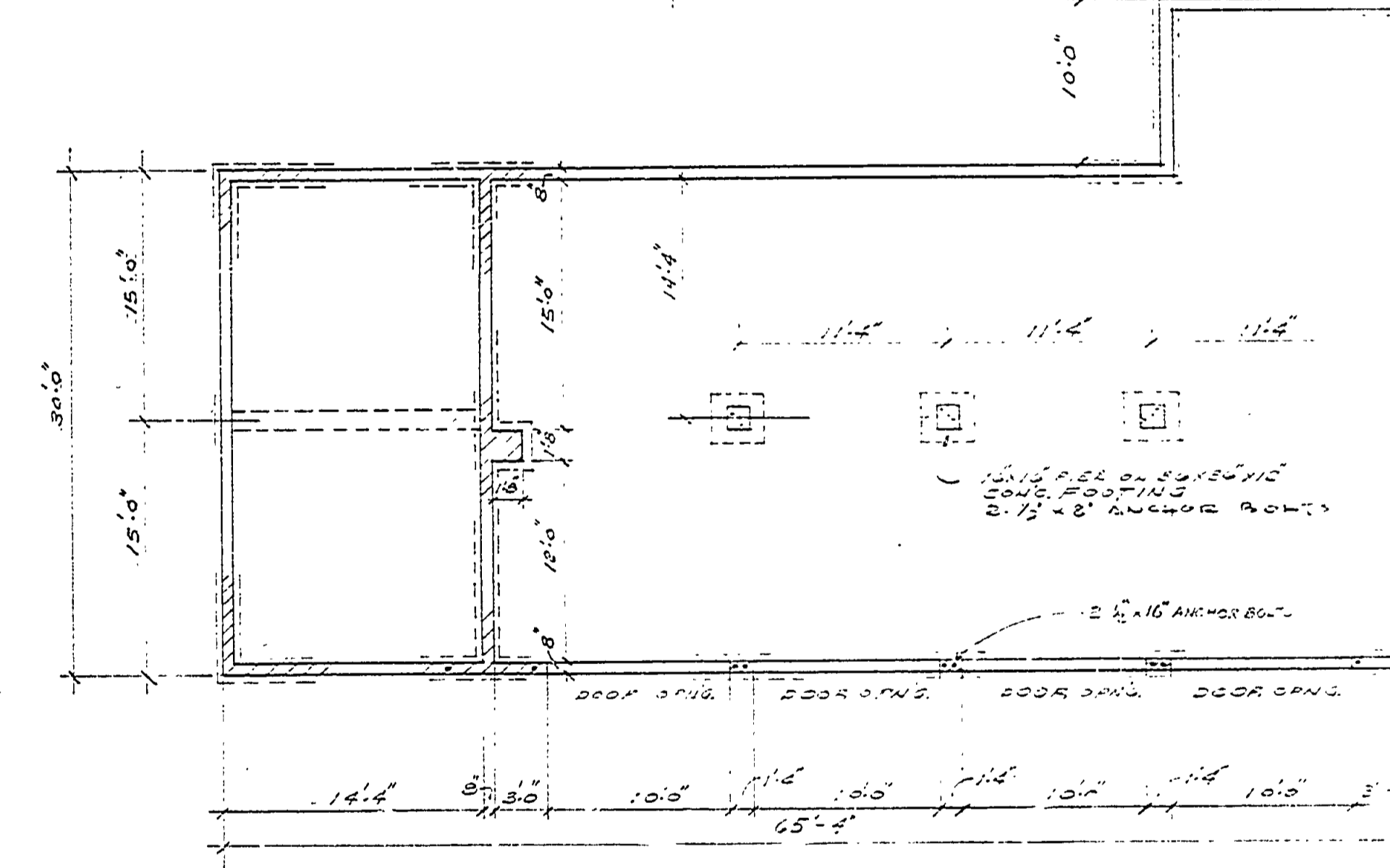
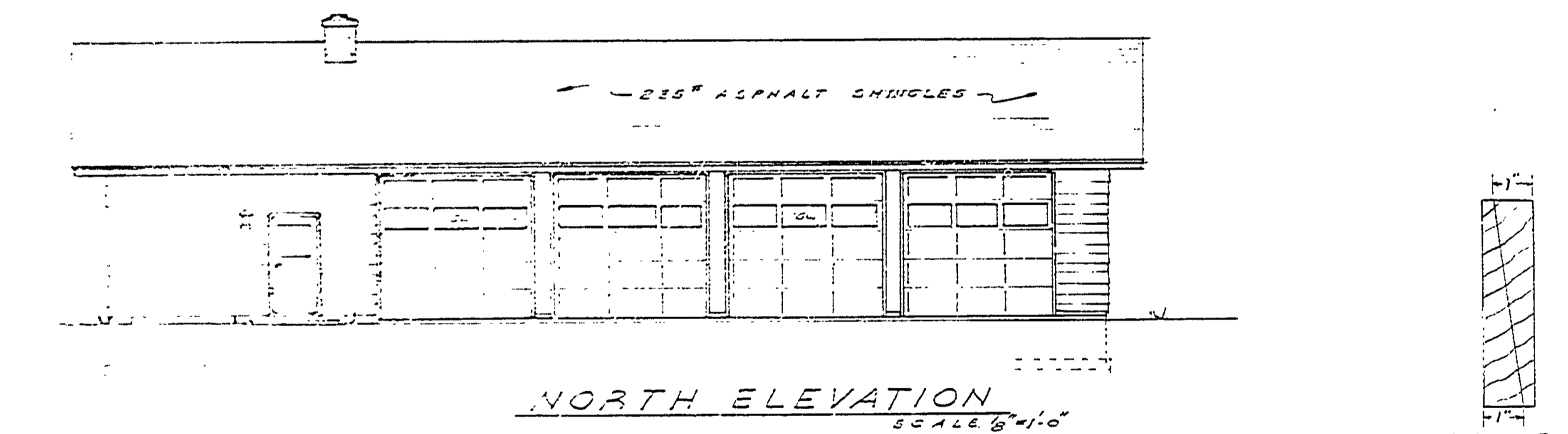
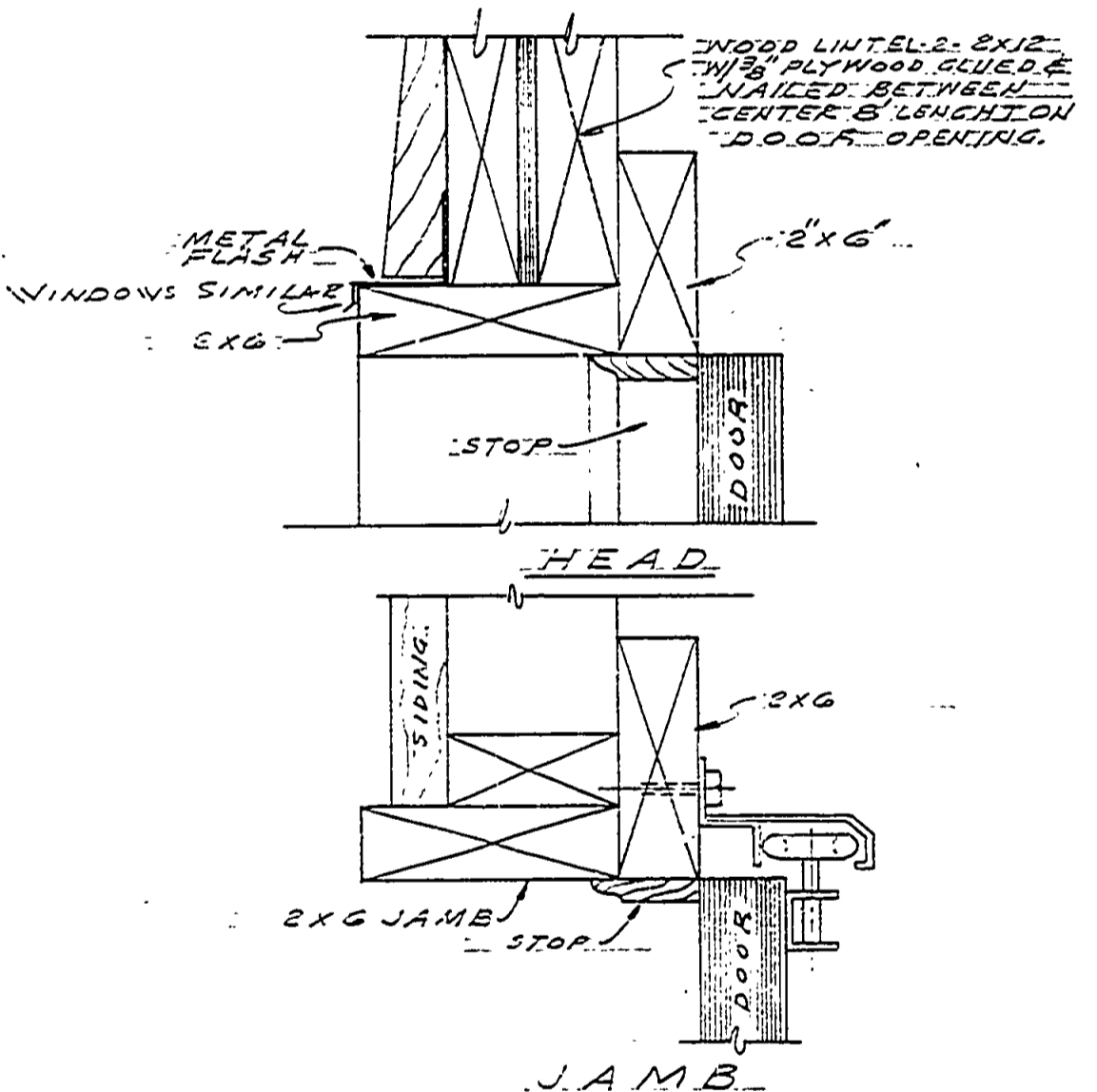
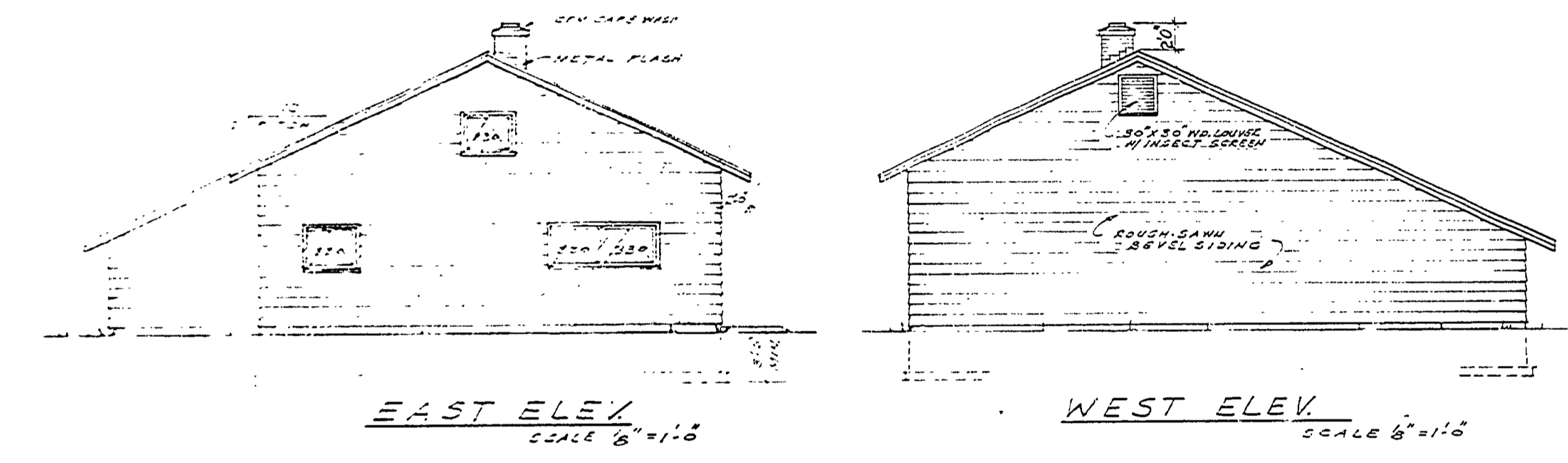


DESIGNED BY	DATE	REVIEWED	DATE	APPROVED	DATE	NO.	DATE	BY
G.D.	1/10	MARG'S	1/10	[Signature]	1/10	1	1/10	USA
						2	1/10	USA
						3	1/10	USA
DRAWN BY	DATE	REVIEWED	DATE	APPROVED	DATE	NO.	DATE	BY
G.D.	1/10	MARG'S	1/10	[Signature]	1/10	4	1/10	USA
						5	1/10	USA
						6	1/10	USA



ROOM	FLOOR WALLS	CEILING	REMARKS
OFFICE	CONC. DRYWN	DRYWALL	NO PAINT
BATH	"	"	"
SHOWER	"	CEM. BACKPLATE	"
BUNK RM.	"	DRYWALL	DRYWALL
SHED	1/2" DRYWN	DRYWALL	"
GARAGE	"	EXP. FR.	"



CONSERVATION COMMISSION APPROVAL

BY: _____ DATE: _____

RECOMMENDED FOR APPROVAL: W. N. G. 2-30-65

RECOMMENDED FOR APPROVAL: [Signature] 4-26-65

SECTION APPROVAL: [Signature] DATE: 4-26-65

MICHIGAN DEPARTMENT OF CONSERVATION
APPROVED: H. E. MacIsaac 4-26-65
CHIEF ENGINEER DATE

PLAN NO. A-115 PROJECT NUMBER RCI-23-108-300-097 SHEET NO. 1 OF 1

MICHIGAN DEPARTMENT OF CONSERVATION
PARKS AND RECREATION DIVISION

PORCUPINE MTS. STATE PARK
EQUIPMENT STATION BLDG.

SHEET NO. 1 OF 1
PLAN NO. A-115