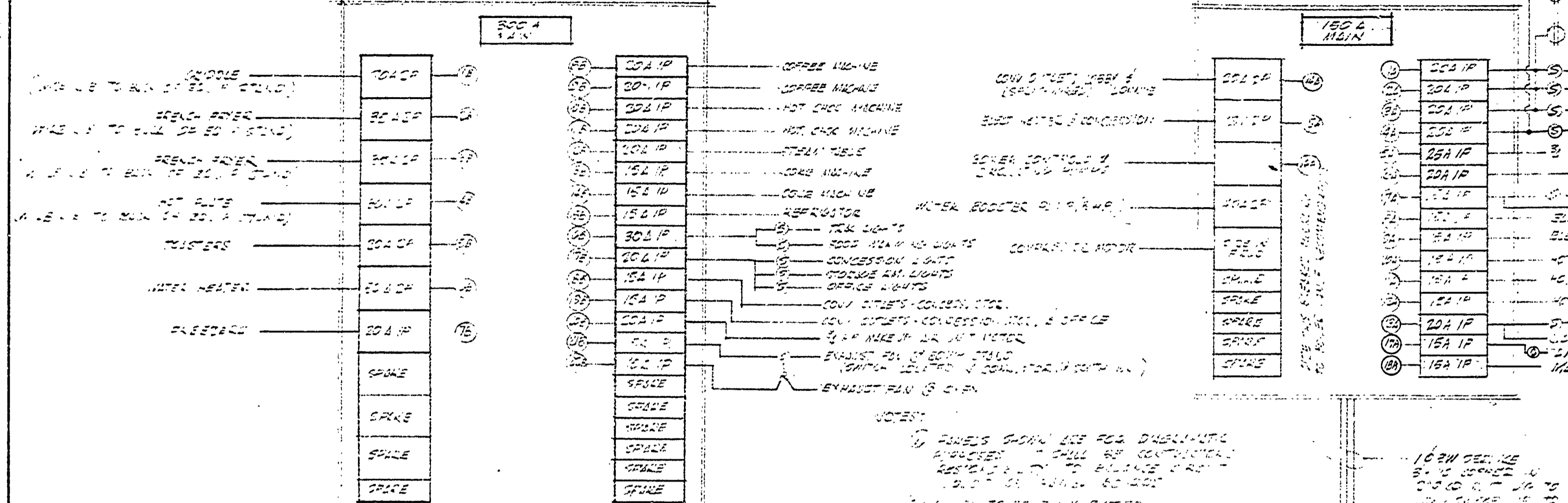


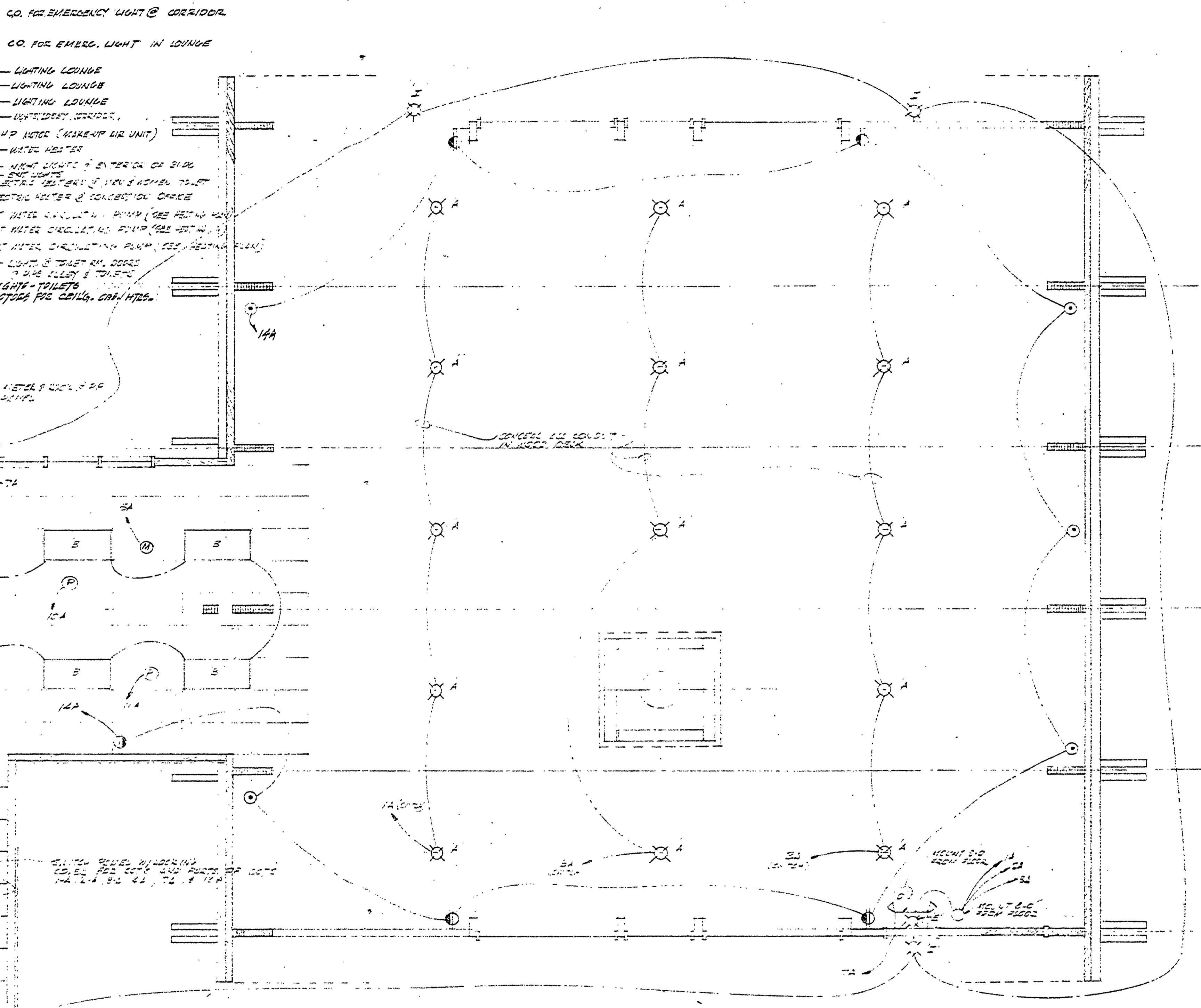
**CONCESSION PANEL**  
**PANEL 'A'**  
500 AMP MAIN - 25 POLES 120V

**DARK PANEL**  
**PANEL 'B'**  
150 AMP MAIN - 25 POLES 120V



**NOTES:**

- 1) PANELS SHALL BE FOR DUAL-PHASE SUPPLY. ALL CIRCUITS SHALL BE CONTINUOUSLY MONITORED BY THE BALANCE PANEL. ALL CIRCUITS SHALL BE 100% TESTED.
- 2) ALL WIRING TO BE IN RIGID CONDUIT.
- 3) EXISTING PANEL IN RESTROOM & STORAGE TO BE REMOVED AND WIRING TO BE RELOCATED TO BE LOCATED IN RESTROOM OR STORAGE AREA.



ELECTRICAL LEGEND			
	120V OUTLET		MOTORS (FANS & PUMPS)
	250V OUTLET (W.A. RECEPT)		LOAD CENTER
	120V OUTLET (WITH BREAKER)		POLE BREAKER PANEL
	EMERGENCY LIGHTING UNIT		ELECTRICAL SWITCH
	TELEPHONE		ELECT. PANEL (CCT. NO.)
	FLUORESCENT LIGHT FIXTURES		LIGHT FIXTURE IDENT. NO.
	INCANDESCENT LIGHT FIXTURES		

ITEM	QUANTITY	DESCRIPTION	REQ.	MODEL NO.	LIST	REMARKS
A	1	RECESSED PENDANT LIGHT	10	2500	NEW (INCL. W. WIRE)	ADD TO BE LOCATED IN LOUNGE AREA (SEE PLAN FOR HEIGHT & SPACING)
B	2	RECESSED LIGHT	20	2500-250	NEW (INCL. W. WIRE)	
C	1	RECESSED LIGHT	1	2500	NEW (INCL. W. WIRE)	
D	1	RECESSED LIGHT	1	2500	NEW (INCL. W. WIRE)	
E	1	RECESSED LIGHT	1	2500	NEW (INCL. W. WIRE)	
F	1	RECESSED LIGHT	1	2500	NEW (INCL. W. WIRE)	
G	1	RECESSED LIGHT	1	2500	NEW (INCL. W. WIRE)	
H	1	RECESSED LIGHT	1	2500	NEW (INCL. W. WIRE)	
I	1	RECESSED LIGHT	1	2500	NEW (INCL. W. WIRE)	
J	1	RECESSED LIGHT	1	2500	NEW (INCL. W. WIRE)	
K	1	RECESSED LIGHT	1	2500	NEW (INCL. W. WIRE)	
L	1	RECESSED LIGHT	1	2500	NEW (INCL. W. WIRE)	
M	1	RECESSED LIGHT	1	2500	NEW (INCL. W. WIRE)	
N	1	RECESSED LIGHT	1	2500	NEW (INCL. W. WIRE)	
O	1	RECESSED LIGHT	1	2500	NEW (INCL. W. WIRE)	
P	1	RECESSED LIGHT	1	2500	NEW (INCL. W. WIRE)	
Q	1	RECESSED LIGHT	1	2500	NEW (INCL. W. WIRE)	
R	1	RECESSED LIGHT	1	2500	NEW (INCL. W. WIRE)	
S	1	RECESSED LIGHT	1	2500	NEW (INCL. W. WIRE)	
T	1	RECESSED LIGHT	1	2500	NEW (INCL. W. WIRE)	
U	1	RECESSED LIGHT	1	2500	NEW (INCL. W. WIRE)	
V	1	RECESSED LIGHT	1	2500	NEW (INCL. W. WIRE)	
W	1	RECESSED LIGHT	1	2500	NEW (INCL. W. WIRE)	
X	1	RECESSED LIGHT	1	2500	NEW (INCL. W. WIRE)	
Y	1	RECESSED LIGHT	1	2500	NEW (INCL. W. WIRE)	
Z	1	RECESSED LIGHT	1	2500	NEW (INCL. W. WIRE)	