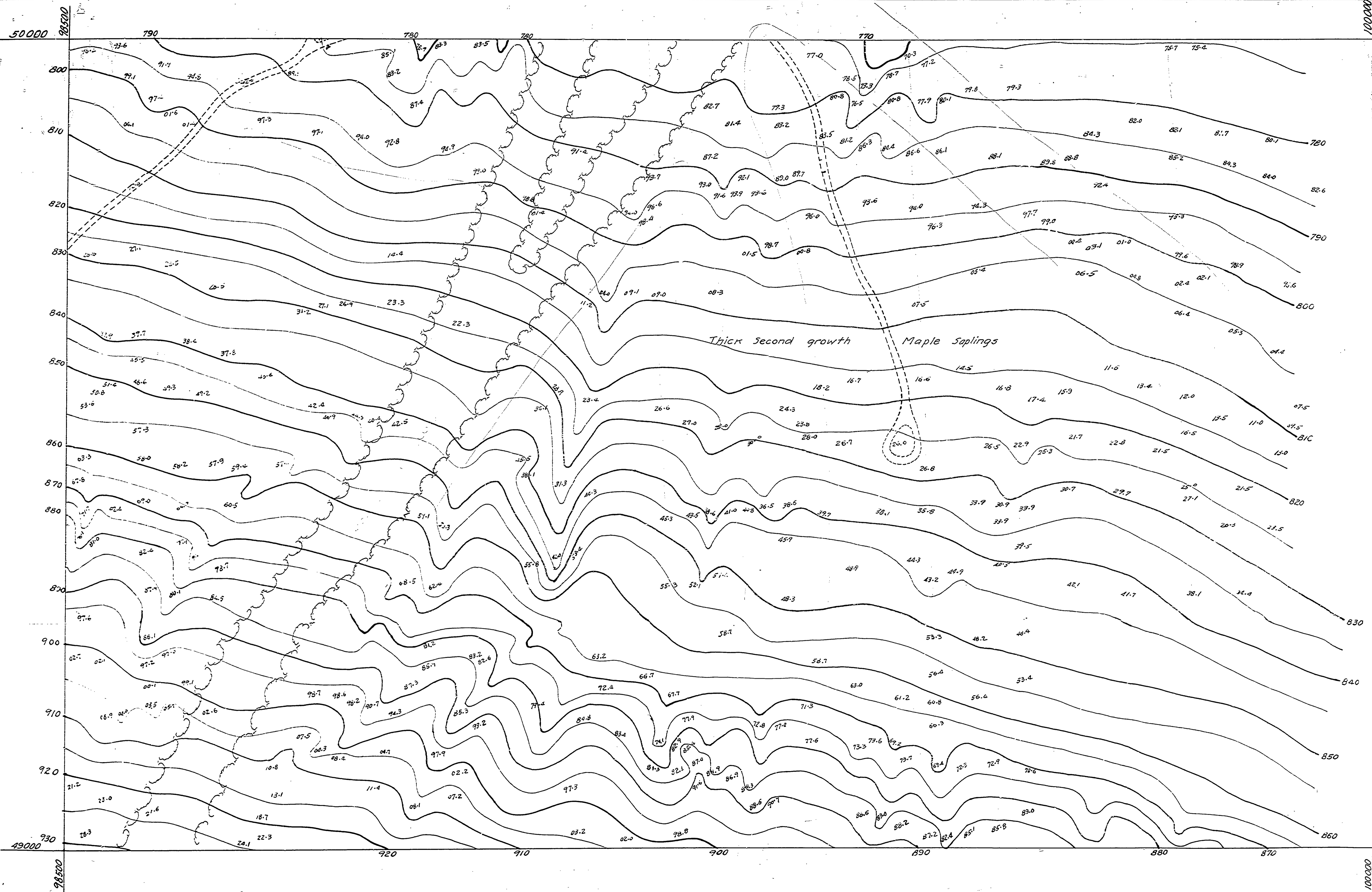


DRAWN BY	REVISIONS		
	NO.	DATE	BY
CHECKED BY	1		
	2		
DATE	APPROVED BY		
	ASSISTANT CHIEF IN CHARGE OF DESIGN		
	ARCHITECTURAL	ENGINEERING	LANDSCAPE



MICHIGAN
DEPARTMENT OF CONSERVATION
PARKS AND RECREATION DIVISION

PORCUPINE MOUNTAIN AREA
TOPOGRAPHY MAP
Scale 1" = 50'

SHEET NO. 8
OF 22

PLAN NO.
E-104