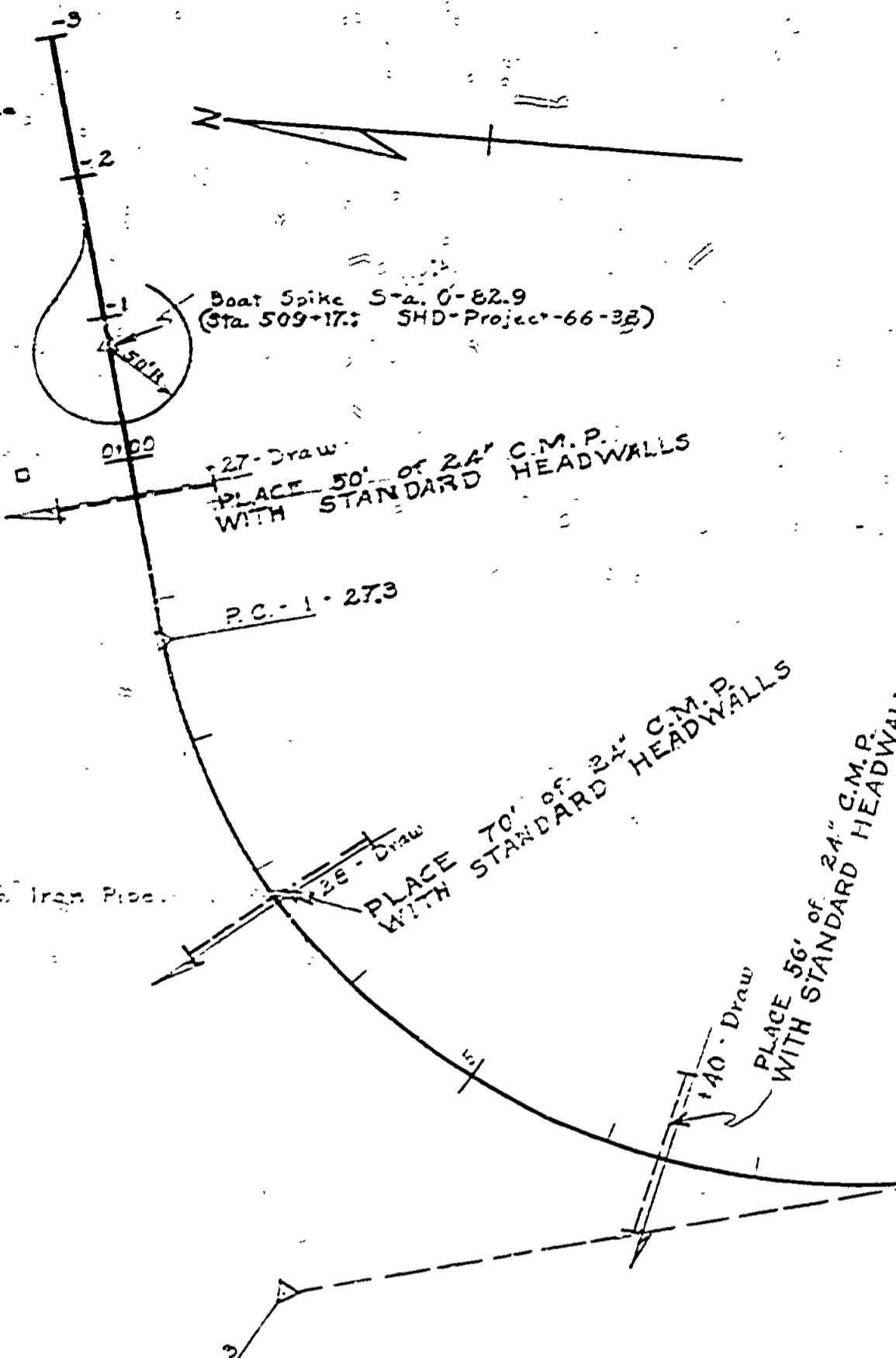


DATE	BY	REVISIONS
		1
		2
		3
		4
		5
		6

Witnesses to Sta. 0+82.9 Boat Spike
 S.H.D. - Project 66-3b - Sta. 509-17.5
 7' 10" W - 22.15' 16" Hemlock
 5' 5" W - 52.3' 10" Hemlock
 2' 2" W - 1.19' Myrtle-Lake Spg.



Curve Data to Be Staked on Const.
 Δ = 26°-33' R.
 Δ = 19°-00'
 D = 23°-00' L
 T = 268.9'
 L = 204.2'
 R = 11+54.1'
 P.C. = 12+58.3'
 P.T. = 13+58.3'
 P.T. = 14.65'
 Superelevate 0.05'/ft.
 Rotate About C

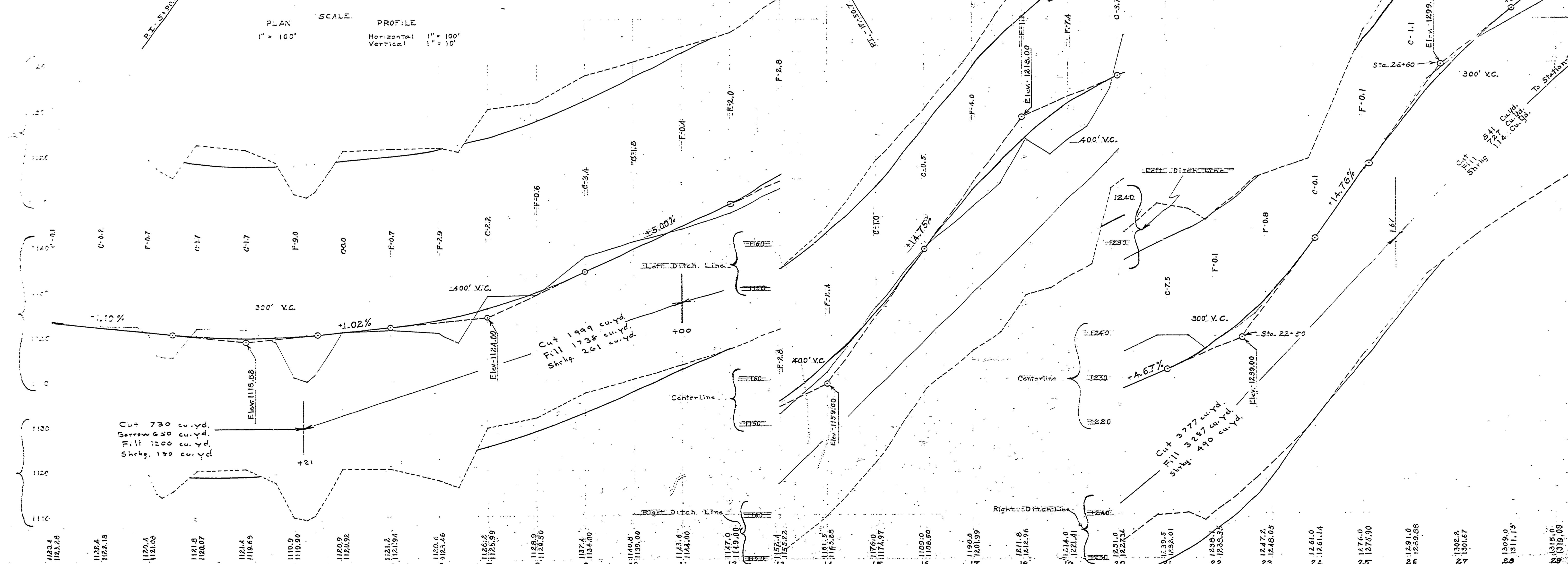
Curve Data to Be Staked on Const.
 Δ = 94°-00' L
 Δ = 23°-00' L
 D = 268.9'
 L = 204.2'
 R = 11+54.1'
 P.C. = 12+58.3'
 P.T. = 13+58.3'
 P.T. = 14.65'
 Superelevate 0.05'/ft.
 Rotate About C

Curve Data to Be Staked on Const.
 Δ = 31°-06' R
 Δ = 21°-00' L
 D = 76.4'
 L = 146.3'
 R = 274.57'
 P.C. = 20+58.6'
 P.T. = 21+15.0'
 P.T. = 21+26.7'
 Superelevate 0.05'/ft.
 Rotate About C

Curve Data to Be Staked on Const.
 Δ = 124°-45' R
 Δ = 54°-00' R
 D = 326.8'
 L = 366.9'
 R = 171.02'
 P.C. = 22+91.3'
 P.T. = 26+16.1'
 P.T. = 26+58.2'
 Superelevate 0.05'/ft.
 Rotate About C

BENCH MARKS				
NO.	Sta.	Dist.	Description	Elev.
1	0+00	70' Rt.	U.S.G.S. TT. 27.7X-1958	1120.65
2	4+60	35' Lt.	S&W in Root of 16" Maple	1123.06
3	10+20	50' Lt.	S&W in Root of 14" Hemlock	1142.18
4	16+10	40' Rt.	S&W in Root of 24" Hemlock	1189.54
5	21+53	23' Rt.	S&W in Root of 36" Oak	1240.66
6	25+15	24' Rt.	S&W in Root of 18" Oak	1260.34
7	30+45	15' Rt.	S&W in Root of 14" Oak	1327.36
8	35+53	53' Rt.	S&W in Root of 14" Oak	1324.28

NOTE: Widen earth grade & gravel 4' on inside of curve from Sta. 22+91 to Sta. 26+58



Right 21' gravel to the Proposed Ditch Grade
 Proposed Ditch Grade
 Centerline
 Proposed Ditch Grade
 Right 21' gravel to the Proposed Ditch Grade
 Proposed Ditch Grade

Cut 730 cu. yd.
 Borrow 650 cu. yd.
 Fill 1200 cu. yd.
 Shrbg. 180 cu. yd.

Cut 1999 cu. yd.
 Fill 1738 cu. yd.
 Shrbg. 261 cu. yd.

Cut 3777 cu. yd.
 Fill 3287 cu. yd.
 Shrbg. 490 cu. yd.