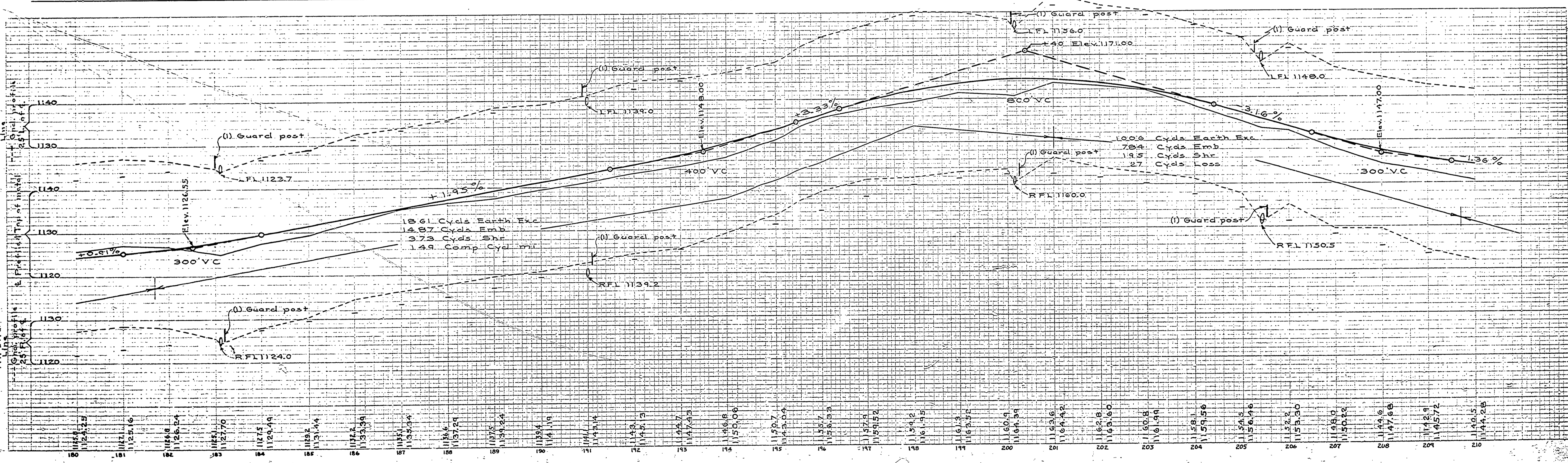
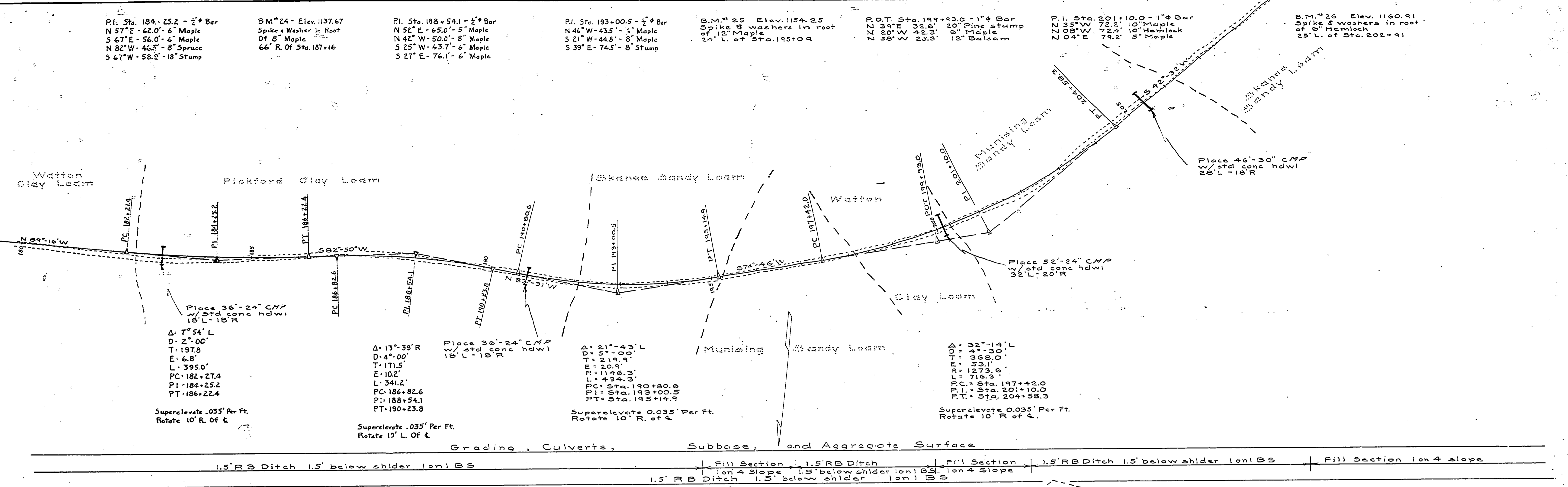


NO.	DATE	BY	REVISIONS	
			NO.	DATE
1			4	
2			5	
3			6	



DRAWN BY: B.L.G. CHECKED BY: J.L.R. DATE: 11 Dec 1953	REVIEWED BY SECTIONS: ARCHITECTURAL: J.L.R. ENGINEERING: H.C.M. LANDSCAPE: J.L.R.	APPROVED BY: [Signature] DATE: 12-19-53 ASSISTANT CHIEF IN CHARGE	MICHIGAN DEPARTMENT OF CONSERVATION PARKS AND RECREATION DIVISION	PORCUPINE MOUNTAINS STATE PARK SOUTH BOUNDARY ROAD Scale: Hor: 1"=100' Ver: 1"=10'	SHEET NO. 9 OF 14 PLAN NO. E-109
---	--	---	---	--	-------------------------------------