

BORROW REQUIREMENTS				
WHERE REQUIRED STA. TO STA.	AMOUNT REQUIRED	AMOUNT AVAILABLE	SOILS SERIES	PIT LOCATION
437 - 702	(SUB BASE) 27,800	110,000	HIAWATHA	PIT #2 STA 645 500' RT.
652 - 668	3180			PIT #2 STA 645 500' RT.
668 - 702	2419			PIT #2 STA 645 500' RT.

**ONTONAGON COUNTY ROAD COMMISSION**  
 IN CO-OPERATION WITH  
**MICHIGAN STATE HIGHWAY DEPARTMENT**  
 AND  
**BUREAU OF PUBLIC ROADS**

PLAN AND PROFILE OF PROPOSED  
**FEDERAL AID SECONDARY PROJECT NO. MICHGAN S 1040(3)**

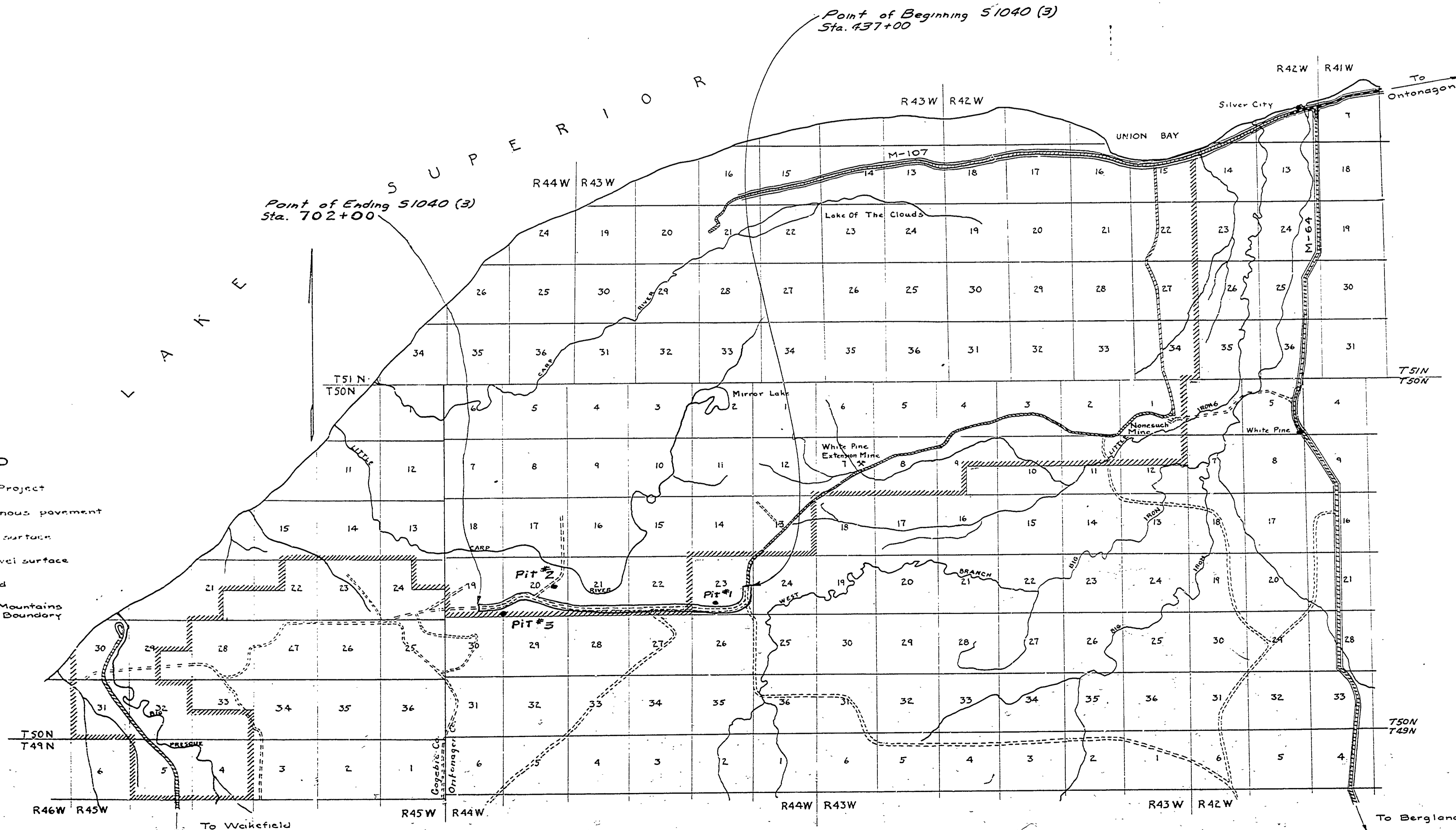
**ONTONAGON COUNTY**  
**CARP LAKE TOWNSHIP**

P. B. R. DIV. NO.	STATE	FEDERAL PROJECT	FISCAL YEAR	SHEET NO.	TOTAL SHEETS
123	MI.	S1040(3)	1961	14	14

THE IMPROVEMENTS COVERED BY THESE PLANS SHALL BE DONE IN ACCORDANCE WITH THE MICHIGAN STATE HIGHWAY DEPARTMENT CURRENT STANDARD SPECIFICATIONS AND SUPPLEMENTAL SPECIFICATIONS.

PROVISIONS WILL BE MADE FOR CONTROL OF EROSION ON SHOULDERS AND SLOPES BY MEANS OF SEEDING, SODDING, OR OTHER ACCEPTABLE METHODS, EITHER AS A PART OF THIS CONTRACT, OR TO BE DONE BY THE COUNTY UPON COMPLETION OF THE CONTRACT WORK.

CLASS B SLOPES WILL BE REQUIRED ON THIS PROJECT.



CONTRACT FOR *G & DS and App. Surf. Course*

ONTONAGON COUNTY APPROVAL  
 BOARD OF COUNTY ROAD COMMISSIONERS

BY *Alvin Cannon* CHAIRMAN DATE *5/22/61*

BY *Evel Doyle*

DATE *5/22/61*

STATE HIGHWAY DEPARTMENT APPROVAL

APPROVED **JOHN C. MACKIE** STATE HIGHWAY COMMISSIONER

BY *J. E. Meyer* CHIEF ENGINEER DATE *8/1/61*

CONTRACT FOR

ONTONAGON COUNTY APPROVAL  
 BOARD OF COUNTY ROAD COMMISSIONERS

BY \_\_\_\_\_ CHAIRMAN DATE \_\_\_\_\_

BY \_\_\_\_\_

DATE \_\_\_\_\_

STATE HIGHWAY DEPARTMENT APPROVAL

APPROVED **JOHN C. MACKIE** STATE HIGHWAY COMMISSIONER

BY \_\_\_\_\_ DEPUTY COMMISSIONER CHIEF ENGINEER DATE \_\_\_\_\_

DEPARTMENT OF COMMERCE  
 BUREAU OF PUBLIC ROADS

APPROVED \_\_\_\_\_

DISTRICT ENGINEER \_\_\_\_\_

- LEGEND**
- Proposed Project
  - T.L. Bituminous pavement
  - T.L. Gravel surface
  - County gravel surface
  - Logging road
  - Porcupine Mountains State Park Boundary

Ontonagon Co. S 1040(3) CS 66-55