

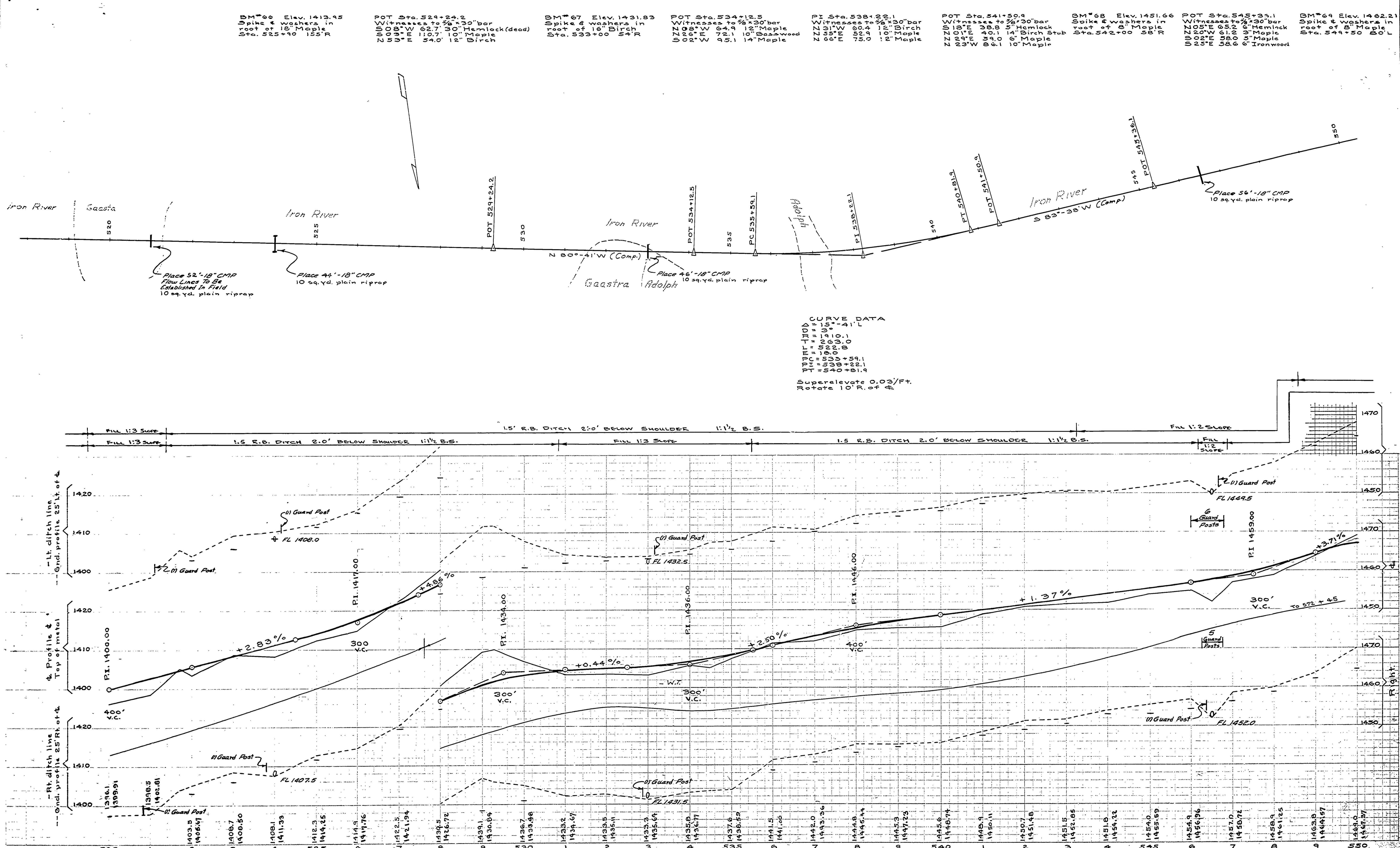
NO.	DATE BY	REVISIONS
1		4
2		5
3		9

DATE	BY

DATE	APPROVED BY	REVIEWED BY SECTIONS
		ARCHITECTURAL
		ENGINEERING
		LANDSCAPE

DATE	APPROVED BY	ASSISTANT CHIEF IN CHARGE

DATE	APPROVED BY	DATE



BM#66 Elev. 1413.95
 Spike & washers in
 root of 18" Maple
 Sta. 525+90 155" R

Z106 VIT. Witnessed to 3/8" x 30" bar
 N 08° W 62.7' 30" Hemlock
 110.7' 10" Maple (dead)
 54.0' 12" Birch

BM#67 Elev. 1431.83
 Spike & washers in
 root of 16" Birch
 Sta. 533+00 54" R

POT Sta. 534+12.5
 VIT. Witnessed to 3/8" x 30" bar
 N 08° W 64.5' 12" Maple
 046.0' 10" Basswood
 02.0' W 92.1' 14" Maple

P Sta. 536+22.1
 VIT. Witnessed to 3/8" x 30" bar
 N 51° W 60.4' 12" Birch
 66.0' E 75.0' 12" Maple

POT Sta. 541+50.9
 VIT. Witnessed to 3/8" x 30" bar
 S 18° E 38.8' 5" Hemlock
 010' E 40.1' 14" Birch stub
 20.0' E 39.0' 6" Maple
 23' W 86.1' 10" Maple

BM#68 Elev. 1451.66
 Spike & washers in
 root of 6" Maple
 Sta. 542+00 56" R

POT Sta. 545+35.1
 VIT. Witnessed to 3/8" x 30" bar
 N 03° E 63.2' 6" Hemlock
 002° E 38.2' 5" Maple
 22° E 58.6' 6" Ironwood

BM#69 Elev. 1462.21
 Spike & washers in
 root of 8" Maple
 Sta. 549+50 50" L

CURVE DATA

PC 529+24.2
 PT 534+12.5
 PI 536+22.1
 PC 541+50.9
 PT 545+35.1
 PI 547+00.0

Super elevate 0.03'/ft.
 Rotate 10° R. of A.