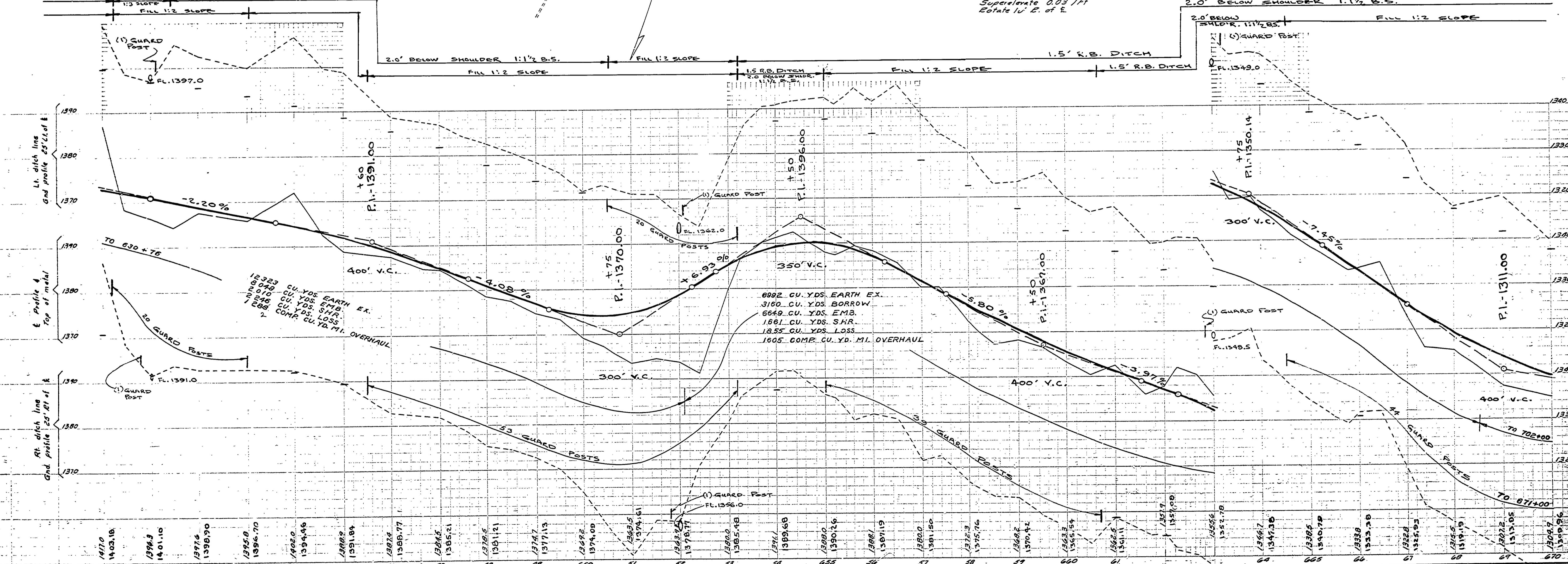
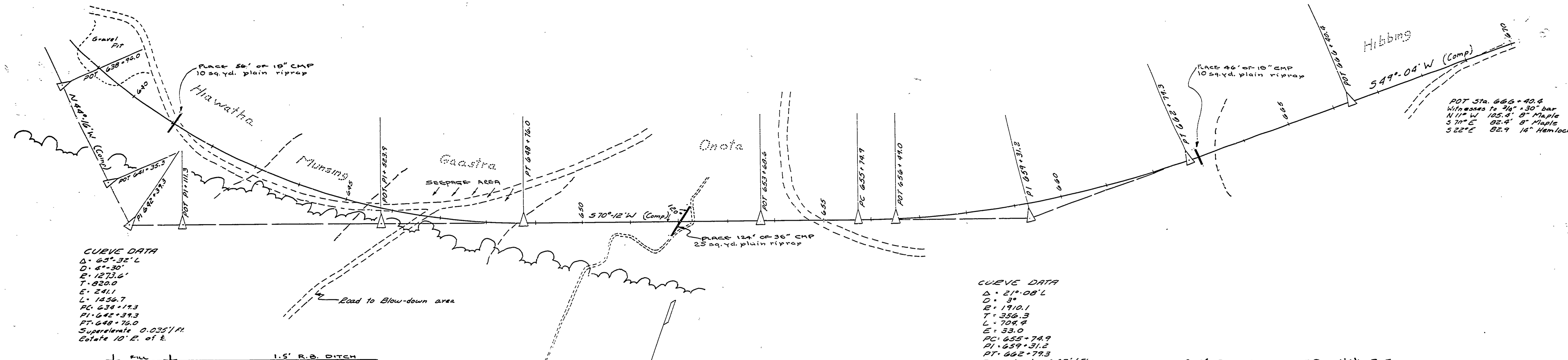


BM \*79 Elev. 1409.13 Spike & washers in root of 16" Maple Sta. 640+15 105'L  
 POT Sta. 641+35.3 Witnesses to 3/4" x 30" bar N 41° W 25.3 18" Maple N 21° E 14.6 8" Maple S 66° E 28.2 12" Maple  
 PI Sta. 642+39.3 Witnesses to 3/4" x 30" bar S 68° W 6.9 20" Hemlock N 06° W 19.5 5" Maple N 32° E 19.1 8" Maple  
 POT PI+111.3 Witnesses to 1/2" x 30" bar N 53° W 13.5 12" W. Birch N 30° E 20.3 4" Maple S 10° E 20.5 10" Hemlock  
 POT PI+523.9 Witnesses to 1/2" x 24" bolt N 67° E 40.4 5" Maple N 23° W 70.2 12" Maple N 69° W 68.2 12" Maple  
 BM \*80 Elev. 1391.84 Spike & washer in root of 11" Maple Sta. 648+24 112'L  
 POT Sta. 653+68.6 Witnesses to 3/4" x 30" bar N 38° W 68.1 15" Maple Stump N 10° E 49.9 8" Maple S 23° W 134.1 7" Maple  
 BM \*81 Elev. 1390.12 Spike & washers in root of 8" Maple Sta. 654+74 38'E  
 POT Sta. 656+47.0 Witnesses to 3/4" x 30" bar S 36° W 65.4 4" Maple S 05° E 70.7 7" Maple S 18° E 53.4 10" Maple  
 PI Sta. 659+31.2 Witnesses to 3/4" x 30" pipe N 23° E 62.0 10" Y. Birch N 30° W 34.1 2" Ironwood N 12° W 44.0 2" Maple  
 PT Sta. 662+79.3 Witnesses to 1/2" x 24" bar S 82° W 66.6 8" Maple N 50° W 73.5 6" Ironwood N 32° W 44.3 12" Maple  
 BM \*82 Elev. 1340.39 Spike & washer in root of 18" Maple Sta. 663+42 65'E  
 POT Sta. 666+40.4 Witnesses to 3/4" x 30" bar N 11° W 105.4 8" Maple S 70° E 82.4 8" Maple S 22° E 82.9 14" Hemlock



REVISIONS	DATE	BY
4		
5		
6		

NO.	DATE	BY
1		
2		
3		

APPROVED BY	DATE	REVIEWED BY SECTIONS
ARCHITECTURAL		
ENGINEERING		
LANDSCAPE		

APPROVED BY	DATE	REVIEWED BY SECTIONS
ASSISTANT CHIEF IN CHARGE		
OF DESIGN		

DRAWN BY	CHECKED BY	DATE