

BM# 103, Elev. 893.21  
PK Nail & Tag in S.  
root of 18" Maple  
130' E. of Sta. 820+25

PI Sta. 822+80.7  
1" Pipe  
N 20°W 57.59' 11" Hemlock  
N 15°E 71.83' 22" Hemlock  
N 45°E 77.80' 24" Hemlock

Curve Data  
Δ: 24°07'00" LT  
D: 5100'  
R: 1146.23'  
T: 211.9'  
L: 482.3'  
E: 23.9'  
PC Sta. 820+35.8  
PI Sta. 822+80.7  
PT Sta. 828+13.1  
Superelevate 0.03'/ft.

BM# 104, Elev. 876.92  
PK Nail & Tag in  
10" Maple, 125' E. of  
Sta. 825+90

~~Sta. 835+93.1  
1" Pipe  
N 12°W 83.95' 30" Hemlock  
N 15°E 82.95' 18" Maple (3M)  
N 40°E 63.20' 14" Hemlock~~

Curve Data Const. E.  
Δ: 03°03'00" LT  
D: 2°00'  
R: 2,834.93'  
T: 20.53'  
L: 422.50'  
E: 7.08'  
PC Sta. 831+05.87  
PI Sta. 833+07.46  
PT Sta. 835+08.37  
Superelevate 0.02'/ft.

Curve Data  
Δ: 8°03'00" LT  
D: 2°00'  
R: 2,864.93'  
T: 20.53'  
L: 422.50'  
E: 7.11'  
PC Sta. 833+01.5  
PI Sta. 835+03.1  
PT Sta. 837+02.8

BM# 106, Elev. 851.73  
PK Nail & Tag in  
10" Hemlock, 100' E. of  
Sta. 830+05

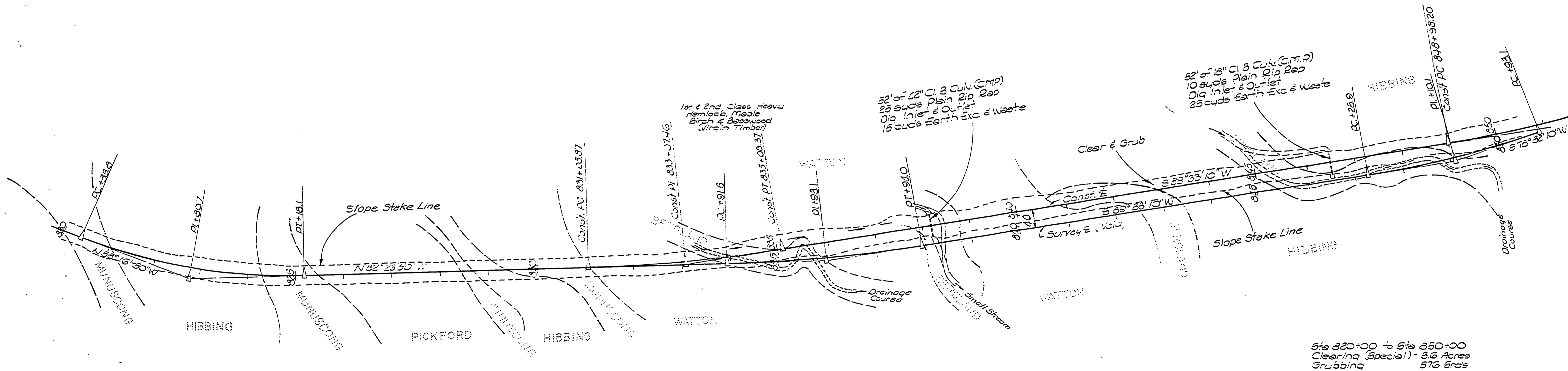
~~PI Sta. 849+10.1  
1" Pipe  
N 30°W 30.36' 9" Hemlock  
N 03°E 65.40' 18" Birch  
N 25°E 60.13' 19" Hemlock~~

Curve Data  
Δ: 11°01'00" LT  
D: 2°00'  
R: 1910.06'  
T: 18.73'  
L: 367.3'  
E: 6.91'  
PC Sta. 847+25.9  
PI Sta. 849+10.1  
PT Sta. 850+03.1

S.P. NO.	STATE	PROJ. NO.	FISCAL YEAR	SHEET NO.	TOTAL SHEETS
4	MICH.	510005			
ROUTE	STATE	COUNTY	TWP.	SHEET NO.	TOTAL SHEETS
44A	27-43	Washtenaw	Washtenaw	6	
S.P. NO.	STATE	PROJ. NO.	FISCAL YEAR	SHEET NO.	TOTAL SHEETS
4	MICH.				
ROUTE	STATE	COUNTY	TWP.	SHEET NO.	TOTAL SHEETS

Washtenaw County  
Washtenaw Twp.  
T. 50N, R. 45W

Scaud. Bindemann 1963



Sta 820+00 to Sta 850+00  
Clearing (Special) - 3.6 Acres  
Grubbing  
576 Snds