

STATE	PROJECT	COUNTY	SHEET NO.	TOTAL SHEETS
MASS	27-26	Essex	17	17

PI Sta. 1005+69.30
 Δ = 18° 50' 00" Rt.
 D = 3° 00'
 R = 1910.08'
 L = 316.8'
 E = 627.8'
 T = 26.1'
 PC Sta. 1002+52.5
 PT Sta. 1003+80.3
 Super-elevate 0.02'/ft.

Curve Data
 BM#129, Elev. 741.97
 PC Nail & Tag in W.
 root of 17" Maple
 100' Lt. of Sta. 1007+10

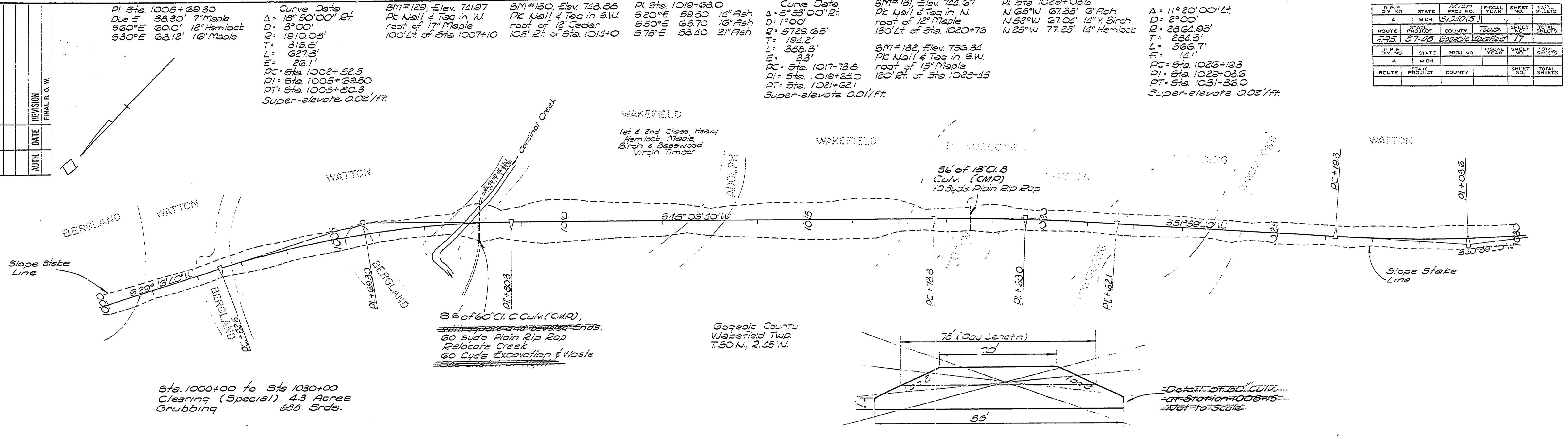
BM#130, Elev. 748.85
 PC Nail & Tag in S.W.
 root of 12" Cedar
 105' Rt. of Sta. 1014+0

PI Sta. 1019+63.0
 Δ = 3° 33' 00" Rt.
 D = 1° 00'
 R = 5729.65'
 L = 194.2'
 E = 33.3'
 T = 194.2'
 PC Sta. 1017+73.8
 PT Sta. 1019+63.0
 Super-elevate 0.01'/ft.

Curve Data
 BM#131, Elev. 744.67
 PC Nail & Tag in N.
 root of 12" Maple
 130' Lt. of Sta. 1020+73

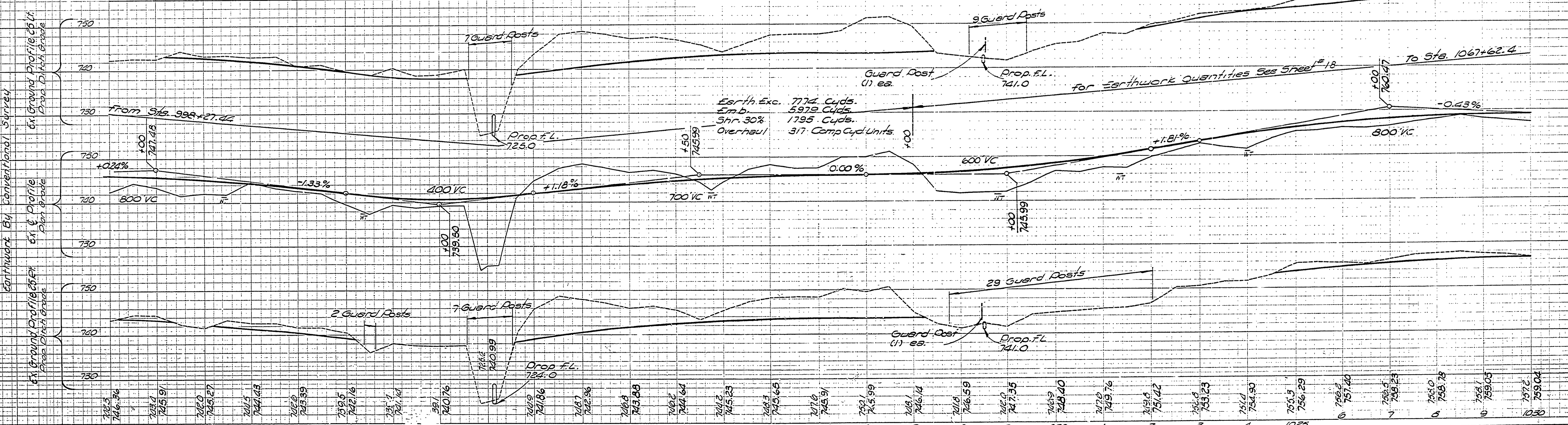
BM#132, Elev. 756.34
 PC Nail & Tag in S.W.
 root of 15" Maple
 120' Rt. of Sta. 1023+15

PI Sta. 1029+03.6
 Δ = 11° 20' 00" Lt.
 D = 2° 00'
 R = 2864.93'
 L = 566.7'
 E = 12.1'
 T = 12.1'
 PC Sta. 1026-19.3
 PT Sta. 1029+03.6
 Super-elevate 0.02'/ft.



2.5 x 1.5' R.B. Ditch 1 on 2 B.S.
 2.5 x 1.5' R.B. Ditch 1 on 2 B.S.
 2.5 x 1.5' R.B. Ditch 1 on 2 B.S.
 2.5 x 1.5' R.B. Ditch 1 on 2 B.S.
 2.5 x 1.5' R.B. Ditch 1 on 2 B.S.

For Subbase Quantities see Sheet # 18



Contour by Conventional Survey
 61' Profile
 61' Profile

OPERATION	DATE
PRELIMINARY E.D.W. CHECKED	1/10/93
FINAL DESIGN CHECKED	1/10/93
TRACED	1/10/93
FINAL E.D.W. CHECK	1/10/93
QUANTITIES CHECKED	1/10/93
SOBAY	1/10/93

OPERATION	DATE
SURVEYED	1/09
PLAN PLOTTED	1/09
PROFILES PLOTTED	1/09
GRADE INSPECTION	1/09
FEDERAL INSPECTION	1/09