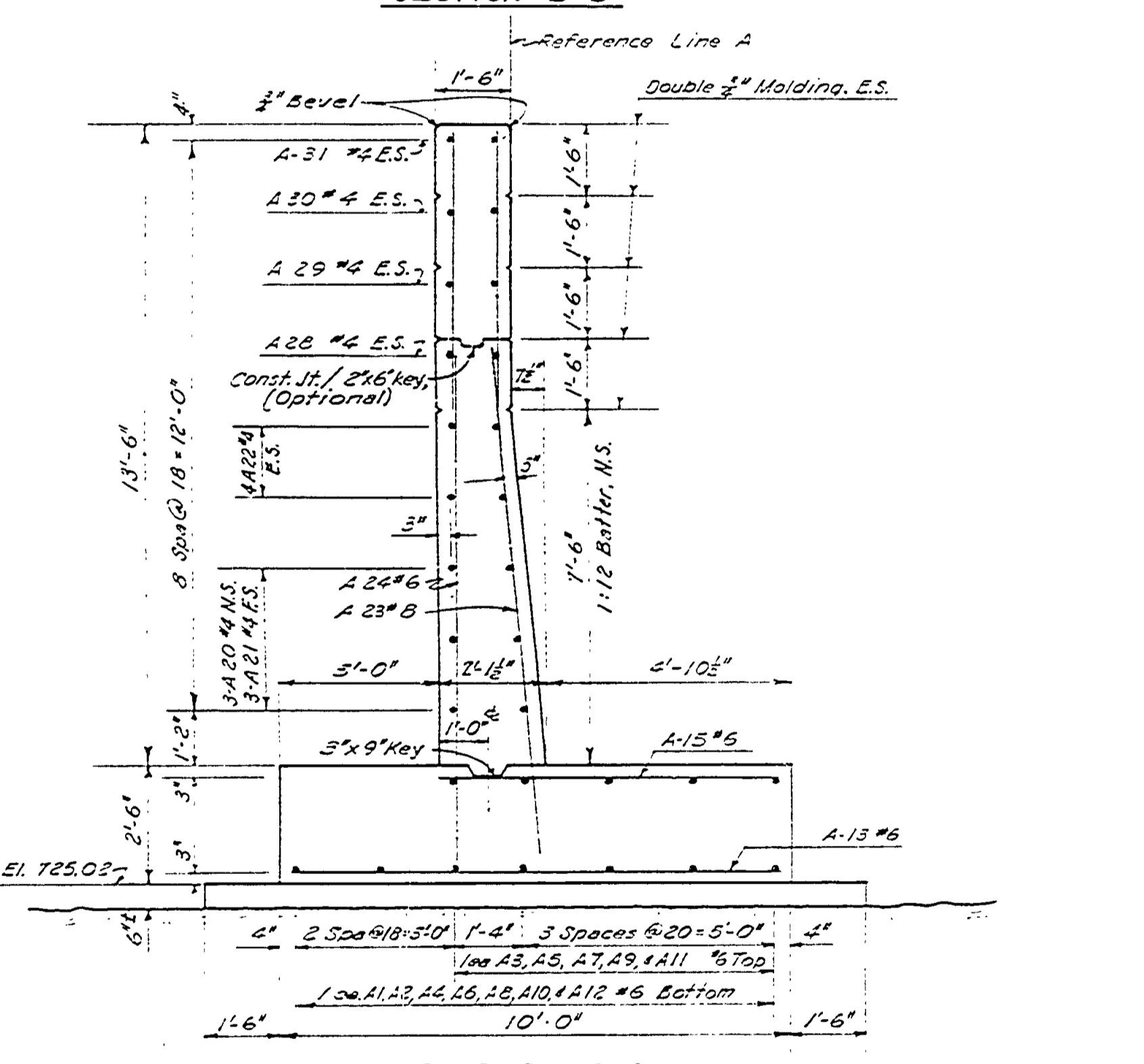
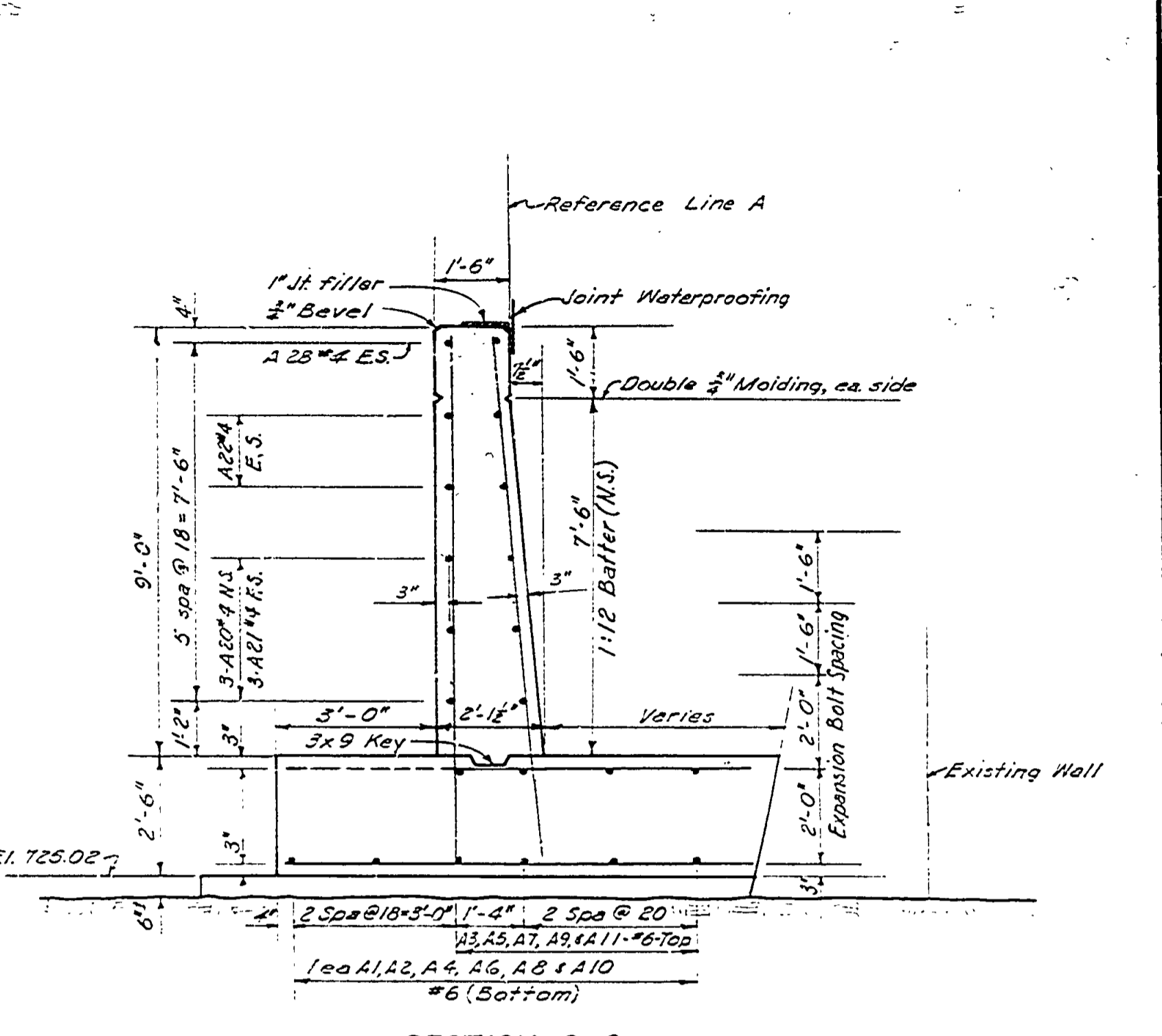
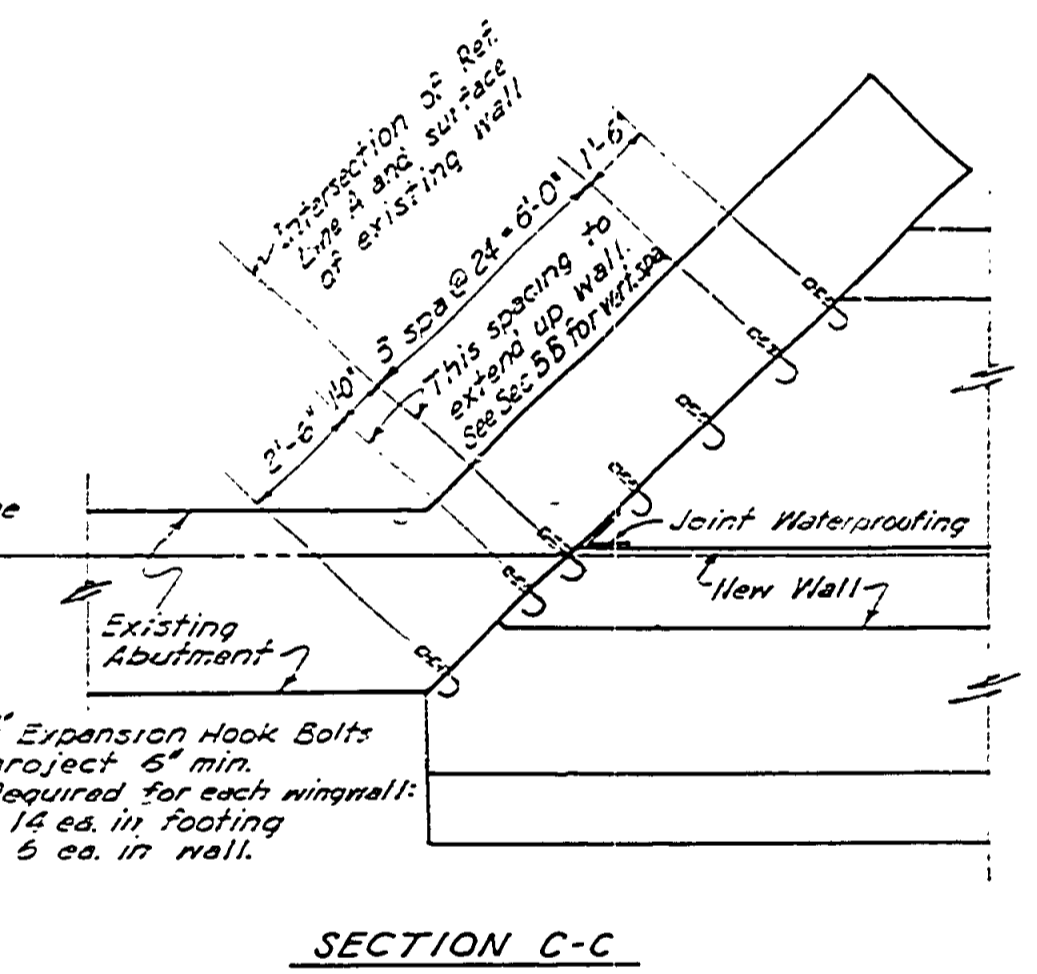
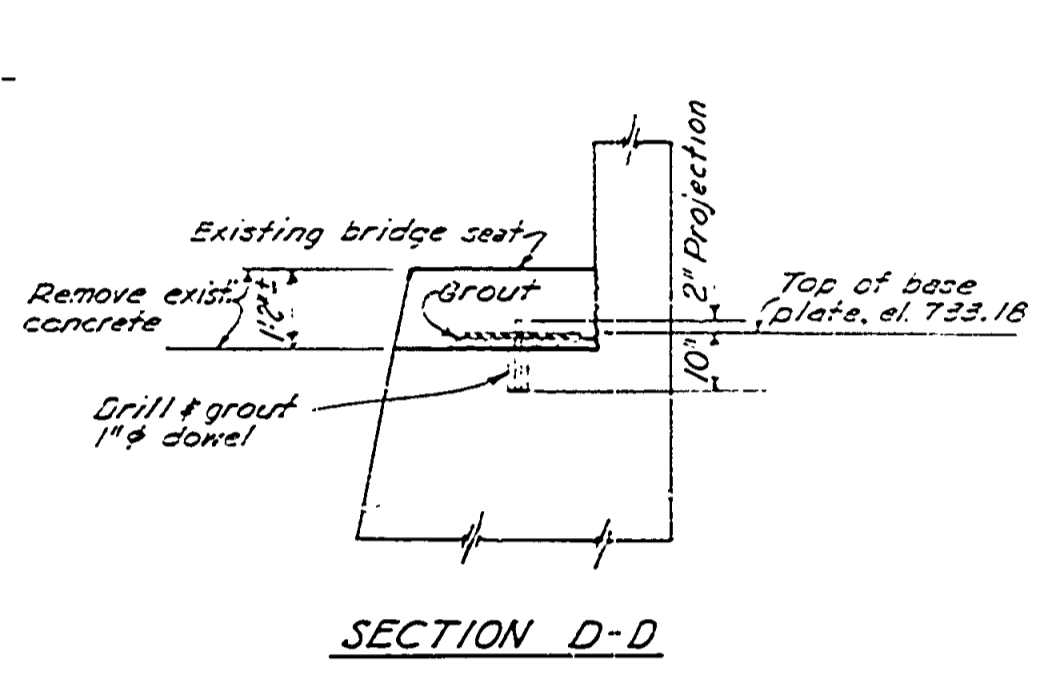
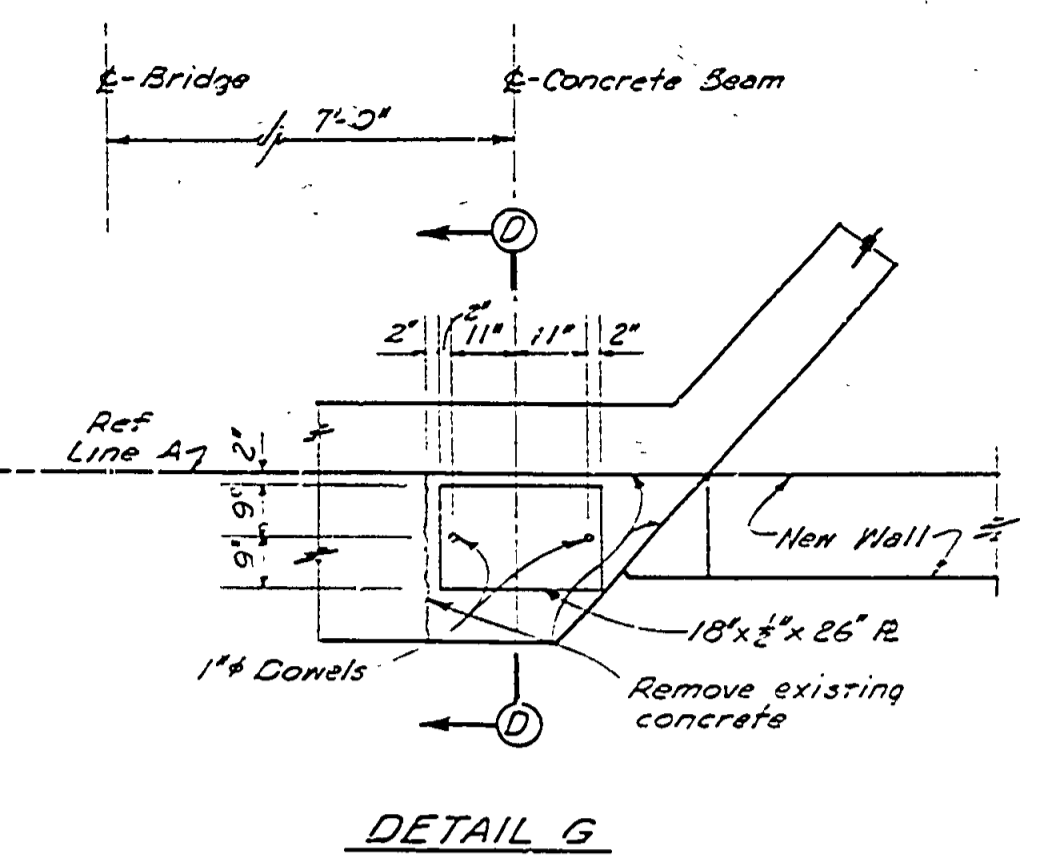
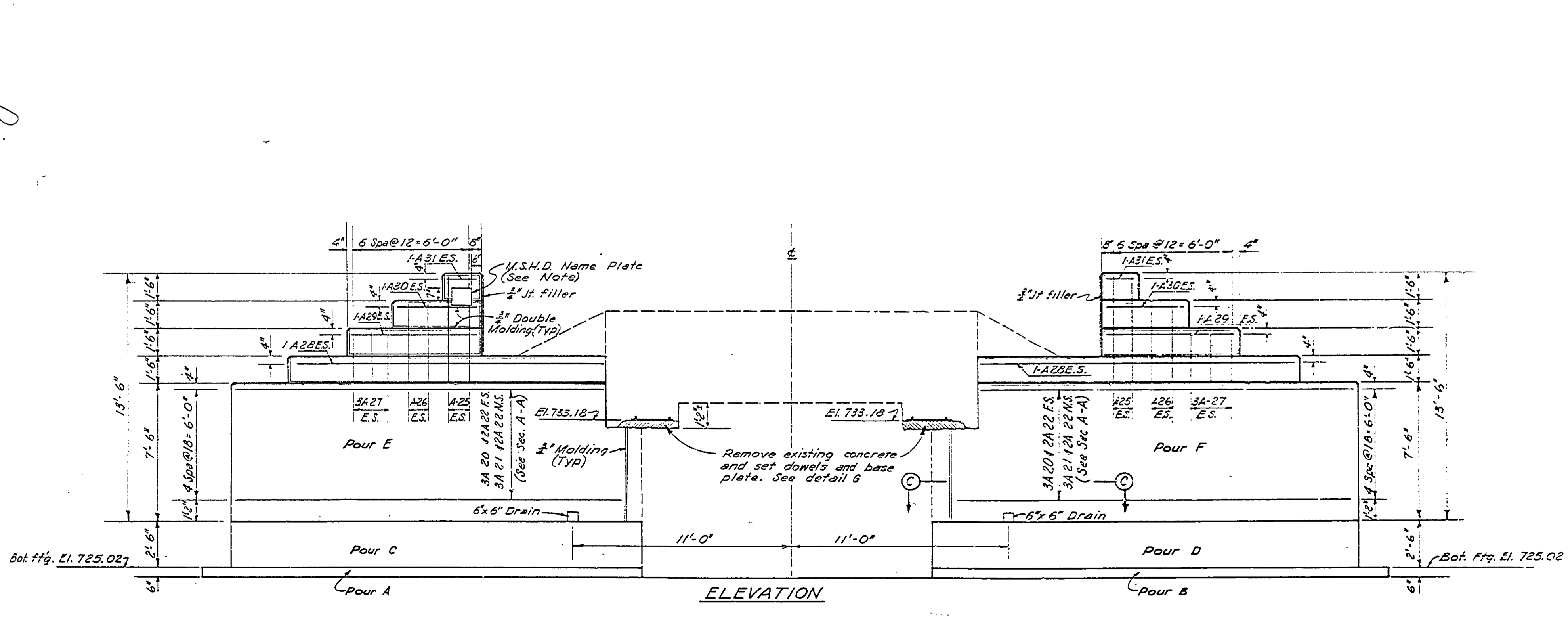
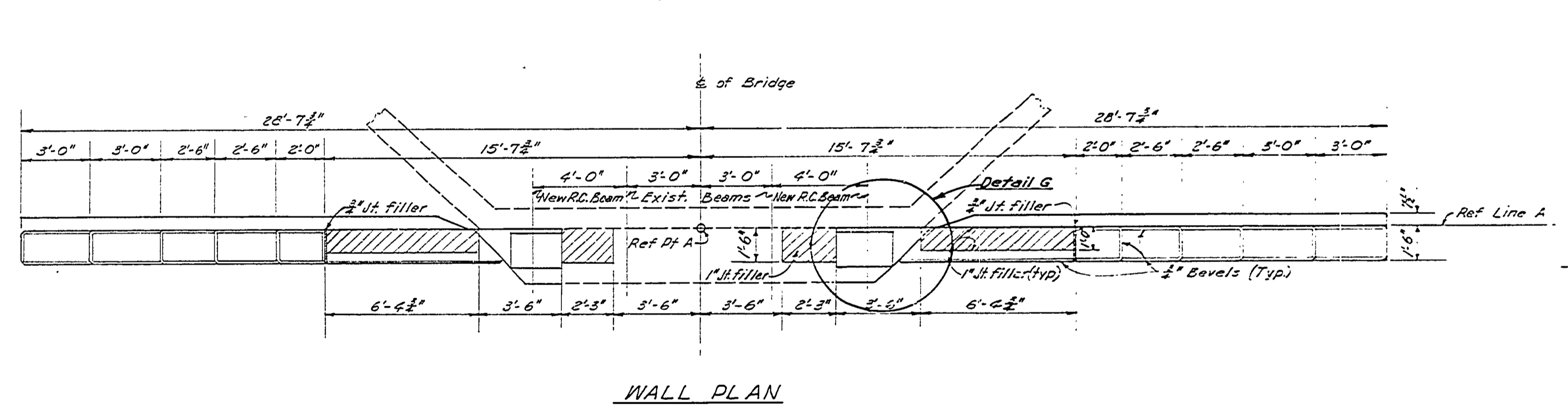
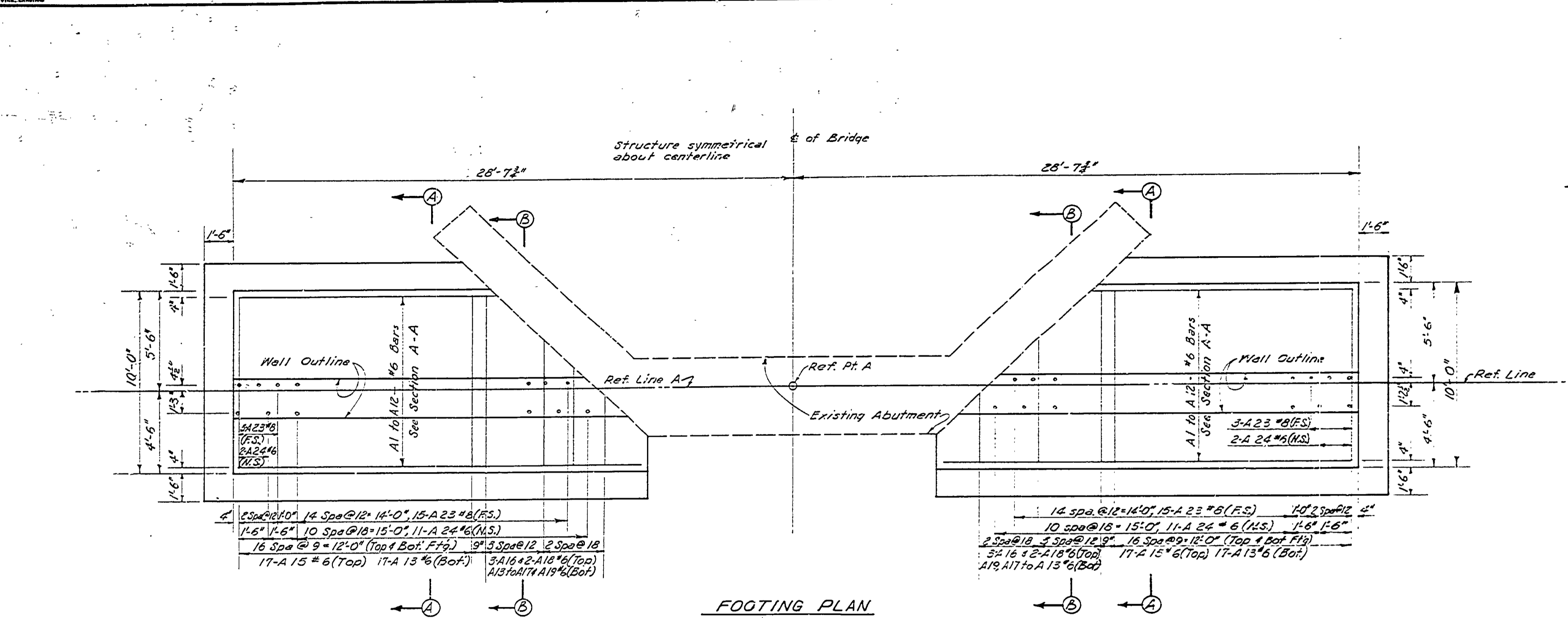


DESIGNED BY	W.H.E.	DATE	June 62	REVIEWED	ARCHITECTURAL	DATE	10-12-62	APPROVED	[Signature]
DRAWN BY	D.M.C.	DATE	Sept 62	REVIEWED	ENGINEERING	DATE	11-1-62	APPROVED	[Signature]
CHECKED BY		DATE		REVIEWED	LANDSCAPE	DATE		APPROVED	[Signature]



CONCRETE QUANTITIES		
GRADE A		
POUR	6A	6AA
A	4.7 Cu.Yds.	
B	4.7 Cu.Yds.	
C	16.8 Cu.Yds.	
D	16.8 Cu.Yds.	
E		12.5 Cu.Yds.
F		12.5 Cu.Yds.

MISCELLANEOUS QUANTITIES		
ITEM	UNIT	AMT.
Unclassified Excavation	Cu.Yds.	130
Joint Waterproofing	Sq. Ft.	30
1" Joint Filler	Sq. Ft.	20
1/2" Joint Filler	Sq. Ft.	14
Expansion Hook Bolts	Ea.	40
Removal of Portions of Existing Structure	L.S.	
Porous Material Grade A	Cu.Yd.	5/10

NOTES:
 N.S., F.S. and E.S. denotes near side, far side and each side respectively.
 J.W.P. denotes joint waterproofing
 Field band reinforcement to clear drain holes.
 For mounting details of name plate see sheet R10N