

PC Sta. 107+52.04
 300' Spikes
 S80°W 22.85' 14' Elm
 S23°E 32.63' 3' Elm
 N23°E 41.27' 6' Linden
 BM No. 12 El. 952.55
 MSHD tag in N. root
 10' Maple 41' Lt.
 Sta. 103+75

PT Sta. 110+04.00
 300' Spikes
 S50°E 12.85' 12' Maple
 Due N 10.26' 0' Birch
 Due W 31.70' 10' Maple

Curve Data
 Δ 12° 53' 23" Lt.
 D 1° 00'
 R 5729.58'
 T 652.28'
 L 1298.97'
 E 37.01'
 PC Sta. 107+52.04
 PI Sta. 110+04.00
 PT Sta. 112+53.95

PT Sta. 112+53.95
 300' Spikes
 N170°W 20.86' 6' Linden
 N170°E 22.70' 3' Elm
 S40°W 27.37' 18' Maple
 BM No. 13 El. 951.75
 MSHD tag in E. root
 15' Maple 65' Lt.
 Sta. 111+72

BM No. 14 El. 924.31
 MSHD tag in W. root
 10' Maple 62' Lt.
 Sta. 119+52

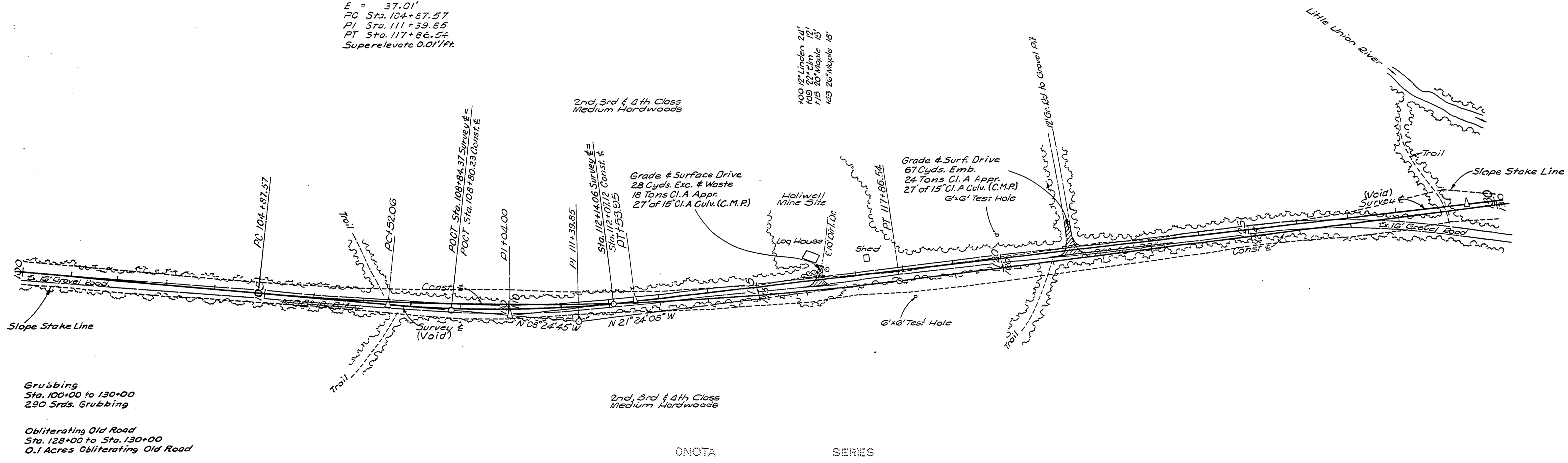
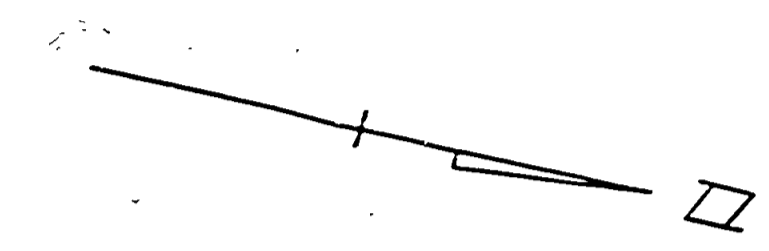
BM No. 15 El. 908.74
 MSHD tag in SW. root
 14' Maple 16' Lt. Sta. 126+58

BM No. 15A El. 911.56
 MSHD tag in E. root
 10' Maple 57' Lt. Sta. 128+90

DIV. NO.	STATE	PROJ. NO.	FISCAL YEAR	SHEET NO.	TOTAL SHEETS
4	MICH.	510007			
ROUTE	STATE	COUNTY	TWR	SHEET NO.	TOTAL SHEETS
1040	66-55	Ontonagon	7	17	
DIV. NO.	STATE	PROJ. NO.	FISCAL YEAR	SHEET NO.	TOTAL SHEETS
4	MICH.				
ROUTE	STATE	COUNTY		SHEET NO.	TOTAL SHEETS

PT Sta. 129+43.60
 300' Spikes
 S10°W 6.33' 2' Maple
 Due E 5.93' 11' Maple
 N45°W 15.90' 4' Maple

Const. & Curve Data
 Δ = 12° 53' 23" Lt.
 D = 1° 00'
 R = 5729.58'
 T = 652.28'
 L = 1298.97'
 E = 37.01'
 PC Sta. 104+87.57
 PI Sta. 111+39.85
 PT Sta. 117+86.54
 Superelevate 0.011/ft.



Squad: Bindemann 1963

Grubbing
 Sta. 100+00 to 130+00
 250 Stds. Grubbing

Obliterating Old Road
 Sta. 128+00 to Sta. 130+00
 0.1 Acres Obliterating Old Road

ONOTA SERIES