

PC Sta 193+62.58
 Scatterpice
 N 70°E 14.1' 8" Poplar
 S 10°E 23.05' 6" Birch
 S 75°W 34.32' 12" Poplar

BM#25, Elev. 673.54
 M.S.H.D. Tag in N. root
 of 8" Maple, 68' Lt. of
 Sta. 192-20

PI Sta 193+21.50
 Boatspike
 N 50°E 36.96' 5" Poplar
 S 70°E 34.30' 2" Poplar
 S 70°W 27.60' 2" Birch

Curve Data
 Δ: 01°37'00" Rt.
 D: 00°30'
 R: 11,459.15'
 T: 461.92'
 L: 923.33'
 E: 9.31'
 PC: 193+62.58
 PI: 193+21.50
 PT: 202+35.91

BM#26, Elev. 655.75
 M.S.H.D. Tag in N. root
 of 12" Maple, 50' Lt. of
 Sta. 201+60

PT Sta. 202+35.91
 R.R. Spike
 S 30°W 19.21' 2" Maple
 S 20°E 33.52' 10" Poplar
 East 23.69' 3" Balsam

BM#27, Elev. 644.46
 M.S.H.D. Tag in N.E. root
 of 8" Maple, 90' Lt. of
 Sta. 211+12

BM#28, Elev. 633.18
 M.S.H.D. Tag in S.W. root
 of 20" Maple, 45' Lt. of
 Sta. 219+20

S. P. R. DIV. NO.	STATE	PROJ. NO.	FISCAL YEAR	SHEET NO.	TOTAL SHEETS
1000	MICH.	66-55	510207	13	17

Sec. 22
 T. 51 N., R. 42 W.

Sec. 13
 T. 51 N., R. 42 W.

BERGLAND SERIES

3rd & 4th Class Medium
 Hardwood & Evergreen

2nd, 3rd & 4th Class Medium
 Hardwood - Evergreen

90' of 24" C.I.B. Culv. (C.M.P.)
 14 Syds. of Plain Rip Rap

Grade & Surface Drive
 70 Cyds. Emb.
 32 Tons C.I.A. Appr.
 Crest

Slope Stake Line

54' of 18" C.I.B. Culv. (C.M.P.)
 10 Syds. of Plain Rip Rap

Dig. Outlet Ditch
 15 Cyds. Exc. & Waste

Exc. 23' of 15" C.M.P.
 Remove

Exc. 30' of 24" C.M.P.
 Remove

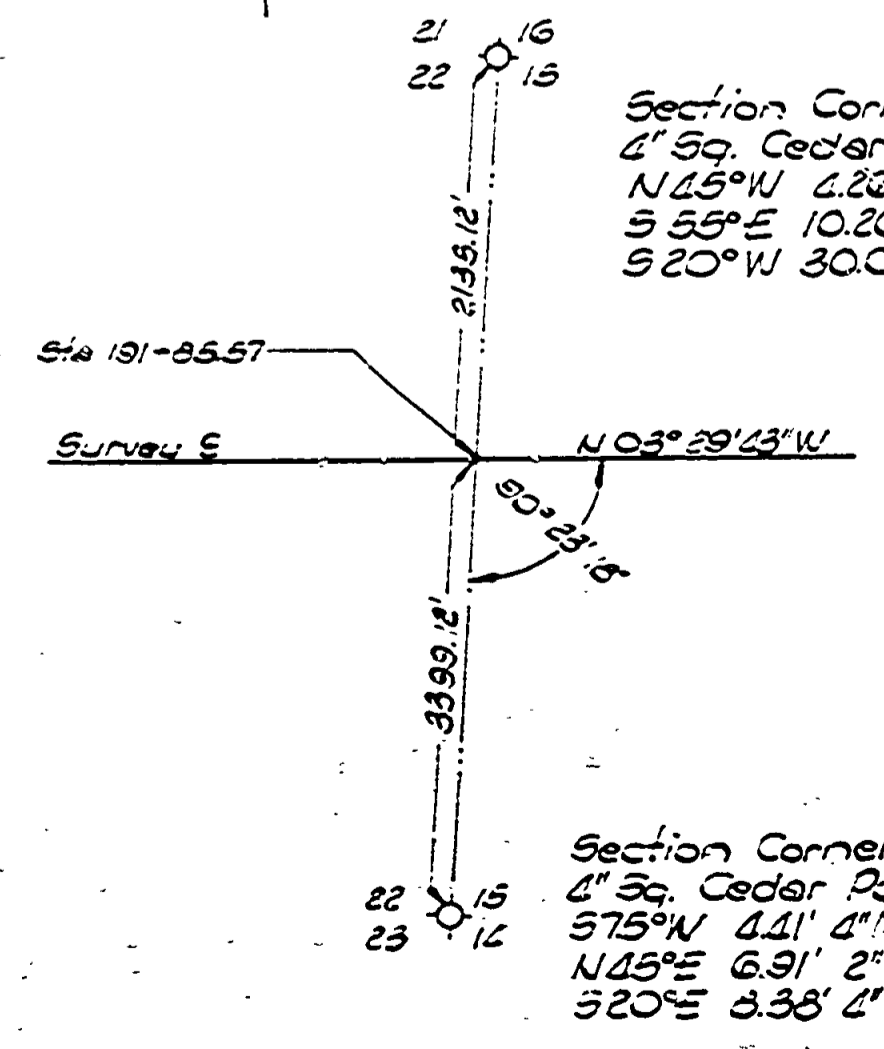
2nd, 3rd & 4th Class Medium
 Hardwood

AUTRAIN SERIES

3rd & 4th Class Medium
 Hardwood

OGEAW SERIES

Grubbing
 Sta. 190+00 to Sta. 220+00
 200 Syds. Grubbing



S. P. R. DIV. NO. 1000