

DATE	REVISION	BY	CHKD.
5-64		P. Blindemann	
5-64		M. Klenz	
5-64		P. Blindemann	

PC Sta. 221+21.14
 2" R Spike
 N60°E 33.15' 2" Maple
 S45°E 33.16' 4" Y. Birch
 N45°W 24.36' 2" Maple

PK Sta. 223+00.19
 Boat Spike
 S50°E 40.62' 4" Y. Birch
 Due W. 16.26' 8" Maple
 Due N. 22.90' 8" Y. Birch

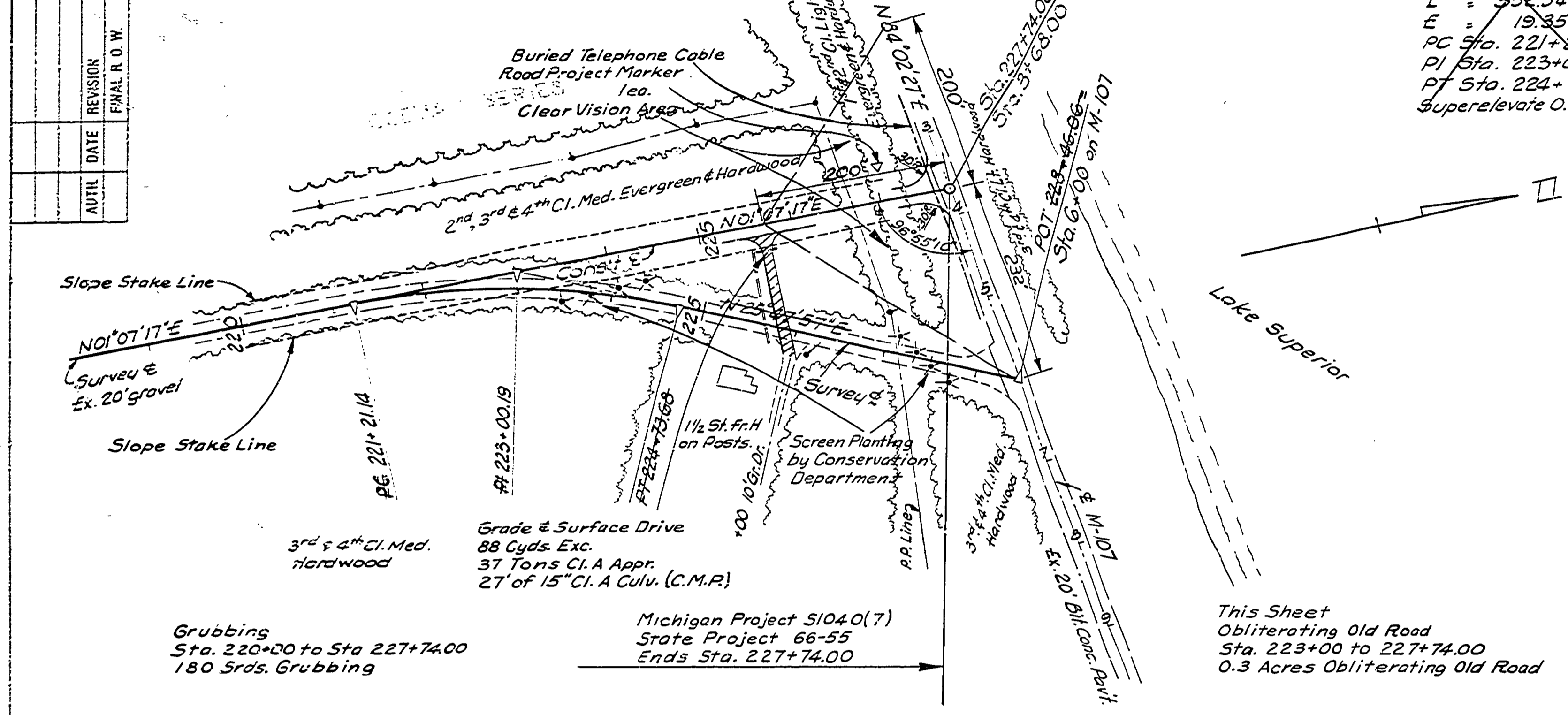
BM #29 - E.I. 615.40
 MSHD Tag in NE Roof
 of G. Maple, 45' Lt. of
 Sta. 227+55.

PT Sta. 224+73.68
 2" R Spike
 S10°E 39.28' 3" Maple
 S35°W 36.87' 2" Maple
 N30°E 17.40' 2" Birch

Curve Data
 $\Delta = 24^\circ 40' 40''$ Rt.
 $D = 7^\circ 00'$
 $R = 819.51'$
 $T = 172.05'$
 $L = 392.54'$
 $E = 19.85'$
 PC Sta. 221+21.14
 PI Sta. 223+00.19
 PT Sta. 224+73.68
 Superelevate 0.0 1/4"

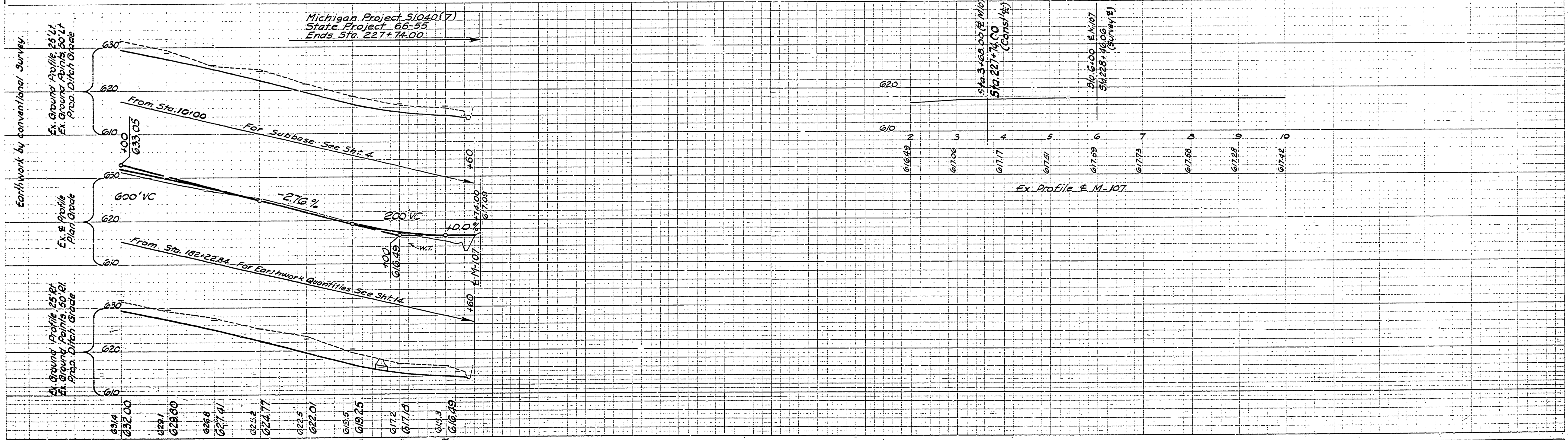
POT Sta. 228+46.06
 Boat Spike
 S60°E 37.08' 2" Poplar
 N45°W 48.95' 10" Poplar
 S55°W 76.03' Sign Post
 POE Sta. 227+74.00
 P.K. Nail at E. M-107
 S10°W 47.85' 12" Y. Birch
 N20°E 36.38' 5" Poplar
 N55°W 37.30' 3" W. Birch

D.P. #	STATE	PROJ. NO.	FISCAL YEAR	SHEET NO.	TOTAL SHEETS	
4	MICH.	51040(7)				
ROUTE	STATE	PROJECT	COUNTY	TYP	SHEET NO.	TOTAL SHEETS
1040	66-55	Ontonagon Corridor	13		17	
D.P. #	STATE	PROJ. NO.	FISCAL YEAR	SHEET NO.	TOTAL SHEETS	
4	MICH.	51040(7)				
ROUTE	PROJECT	COUNTY	TYP	SHEET NO.	TOTAL SHEETS	



2.5' x 1.5' RB Ditch, 1 on 2 BS
 2.5' x 1.5' RB Ditch, 1 on 2 BS

Michigan Project 51040(7)
 State Project 66-55
 Ends Sta. 227+74.00



Earthwork by conventional survey.

Ex. Ground Profile 25' Pt.
 Ex. Ground Points 50' Pt.
 Prop. Ditch Grades

Ex. Profile
 Plan Grade

Ex. Ground Profile 25' Pt.
 Ex. Ground Points 50' Pt.
 Prop. Ditch Grade

OPERATION	DATE	BY	CHKD.
FINAL DESIGN	5-64	P. Blindemann	
FINAL ESTIMATE	5-64	M. Klenz	
FINAL P.L.W. CHECK	5-64	P. Blindemann	
QUANTITIES CHECK	5-64	P. Blindemann	
SCALE			

OPERATION	DATE	BY	CHKD.
PLANTING	11-63	P. Blindemann	
PLAN CHECKED	11-63	P. Blindemann	
PROFILE CHECKED	11-63	P. Blindemann	
FINAL P.L.W. CHECK	11-63	P. Blindemann	
QUANTITIES CHECK	11-63	P. Blindemann	
SCALE			