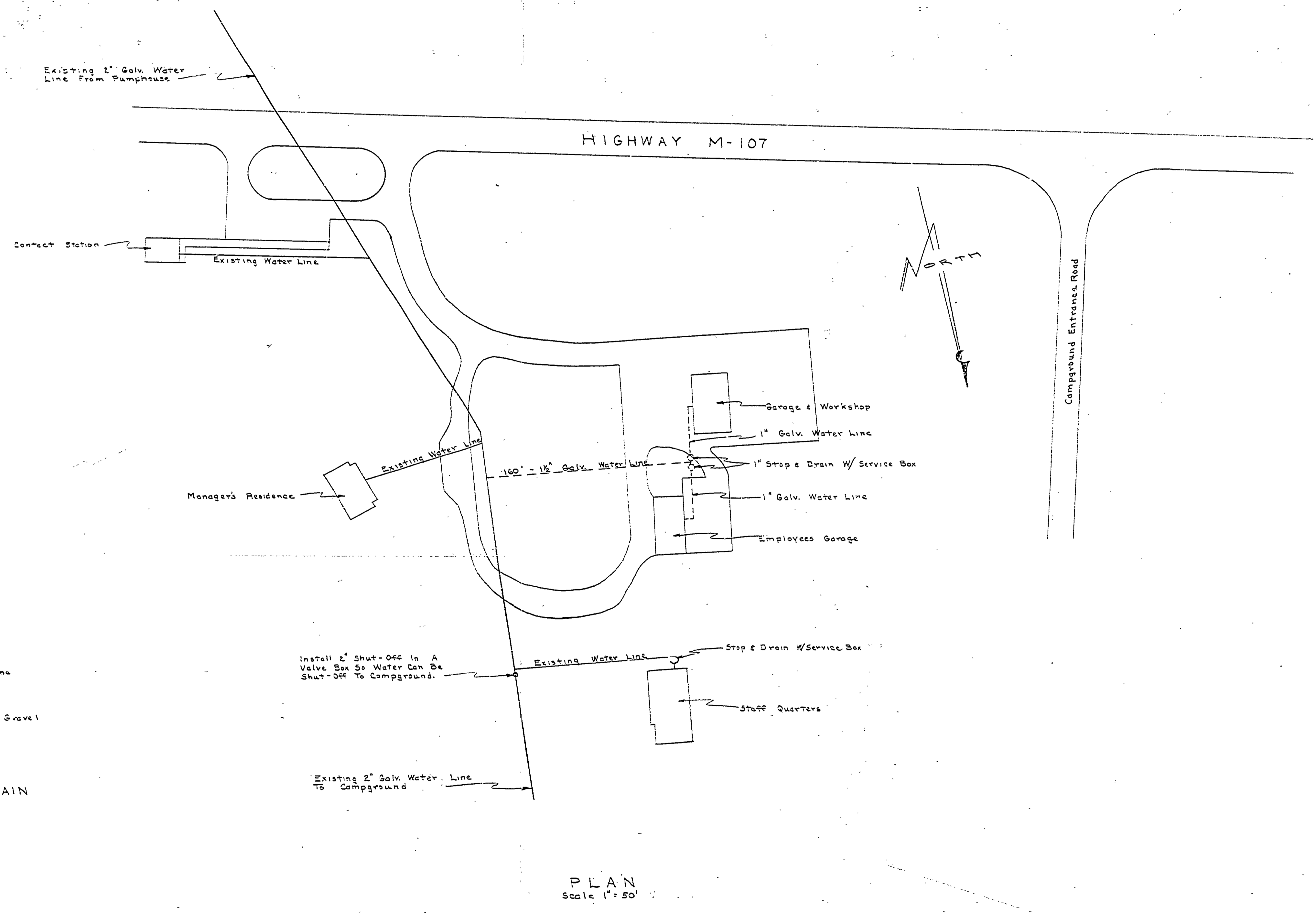
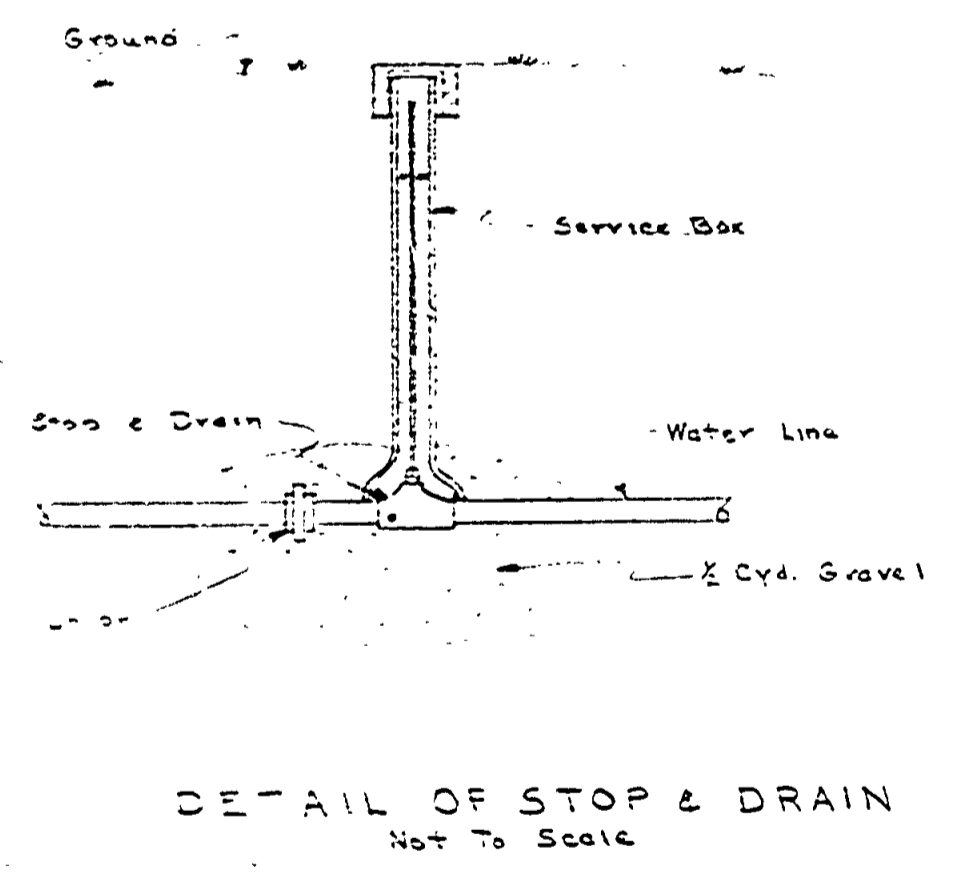


DRAWN BY H. H. S.	REVIEWED BY SECTIONS ARCHITECTURAL ENGINEERING LANDSCAPE	APPROVED BY <i>A.C. M...</i> ASSISTANT CHIEF IN CHARGE OF DESIGN	NO. DATE BY 1 10/11/57 2 3	REVISIONS 4 5 6
CHECKED BY E. J. P.	J.I.R. 2-28-59 J.I.R. 2-28-59 J.I.R. 2-28-59	DATE 2-28-59	ADDED SHEET NO. 2, SHOWING 3" WATER LINE TO 3RD BLDG.	
DATE 28 Dec 1959				



SERVICE AREA

MICHIGAN  
DEPARTMENT OF CONSERVATION  
PARKS AND RECREATION DIVISION

PORCUPINE MOUNTAINS STATE PARK  
WATER SYSTEM - EAST SECTION  
Scale As Shown

SHEET  
NO. 1  
OF 5

PLAN NO.  
E-111