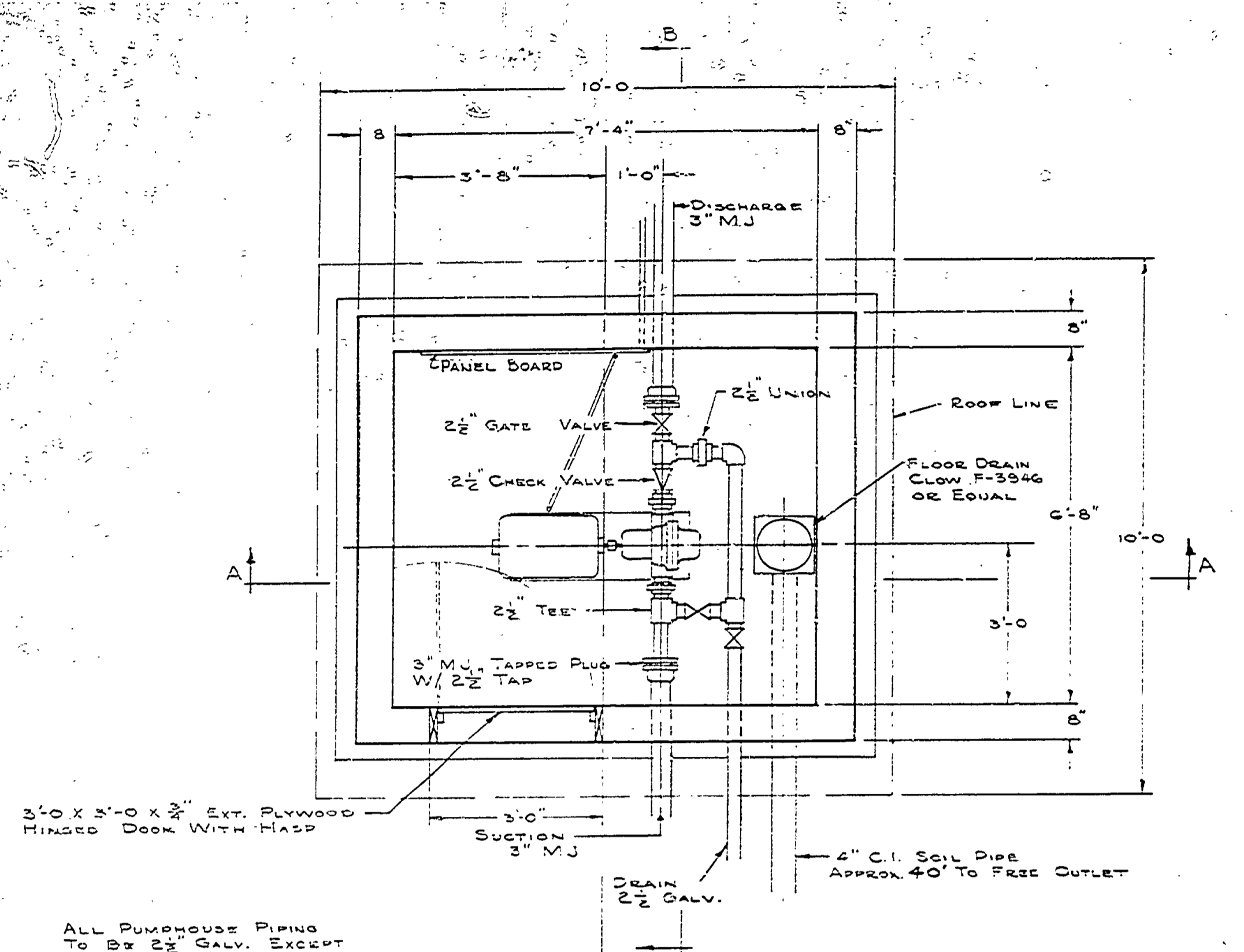


DESIGNED BY	DATE	REVIEWED	DATE	APPROVED	DATE	NO.	DATE	BY	REVISIONS	DATE	BY
W.J.P.	2-65	ARCHITECTURAL				1			4		
J.X.		ENGINEERING				2			5		
		LANDSCAPE				3			6		

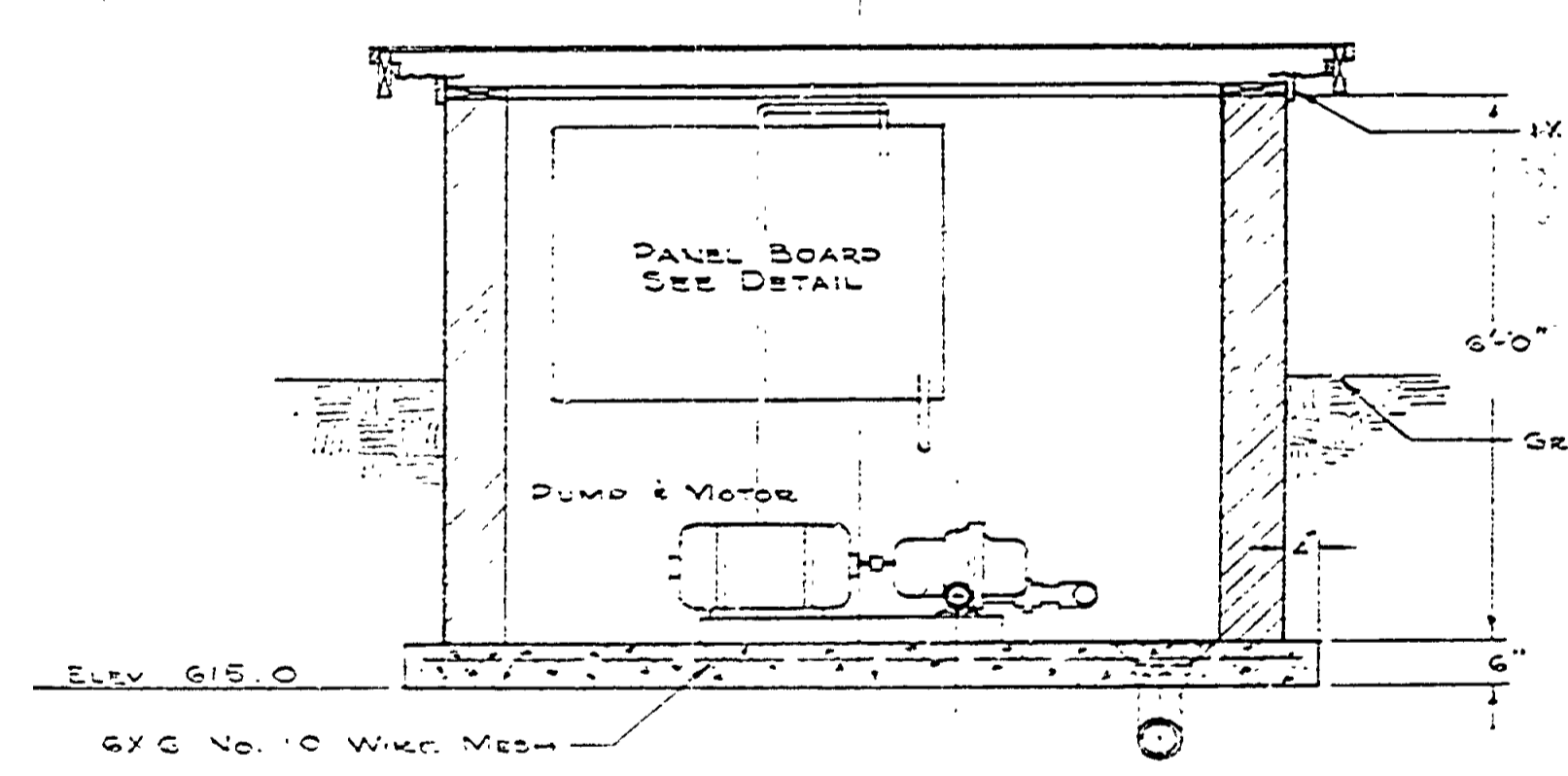


3'-0" X 3'-0" X 1/2" EXT. PLYWOOD HINGED DOOR WITH HASS

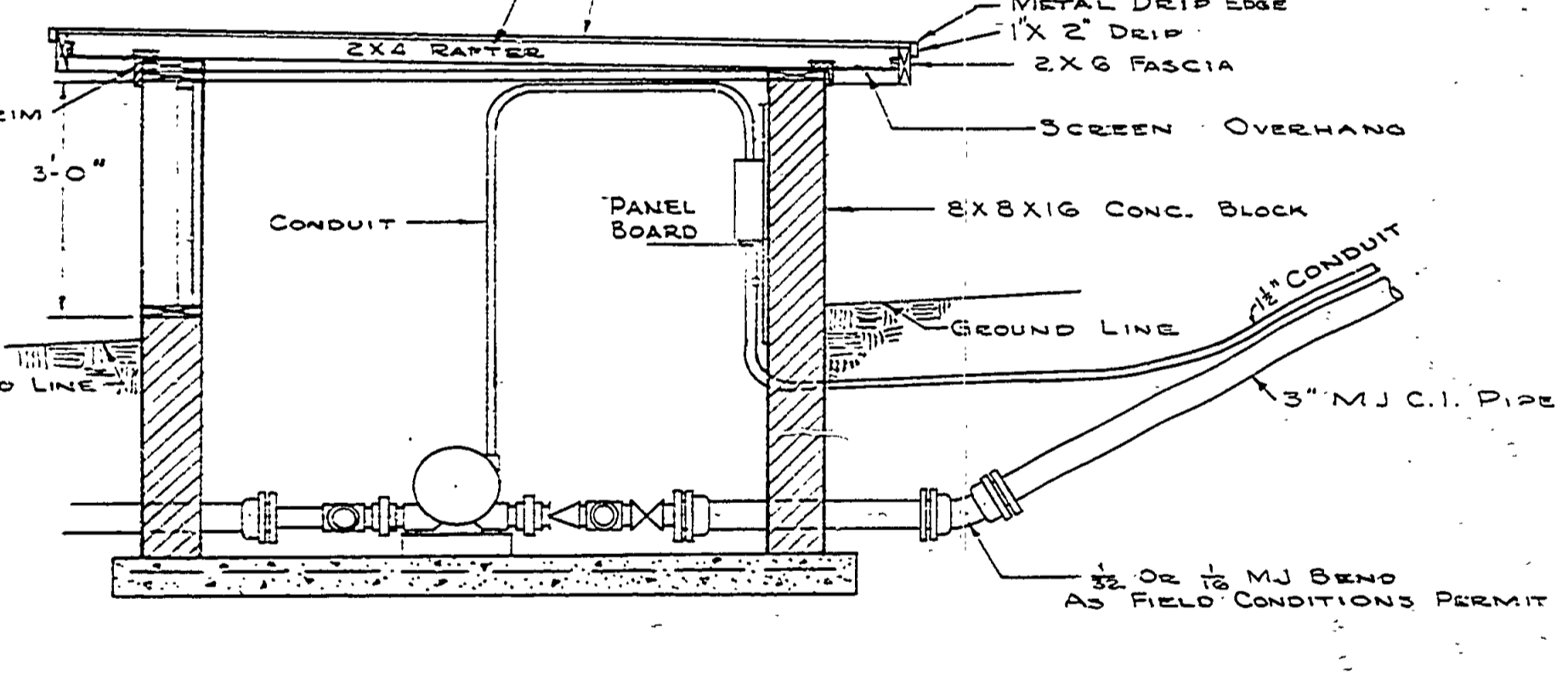
ALL PUMPHOUSE PIPING TO BE 2" GALV. EXCEPT AS NOTED.

PLAN

CONSTRUCT ROOF FOR FUTURE REMOVAL FASTEN AS SHOWN IN DETAIL & PLACES NEAR CORNERS OF BUILDING.



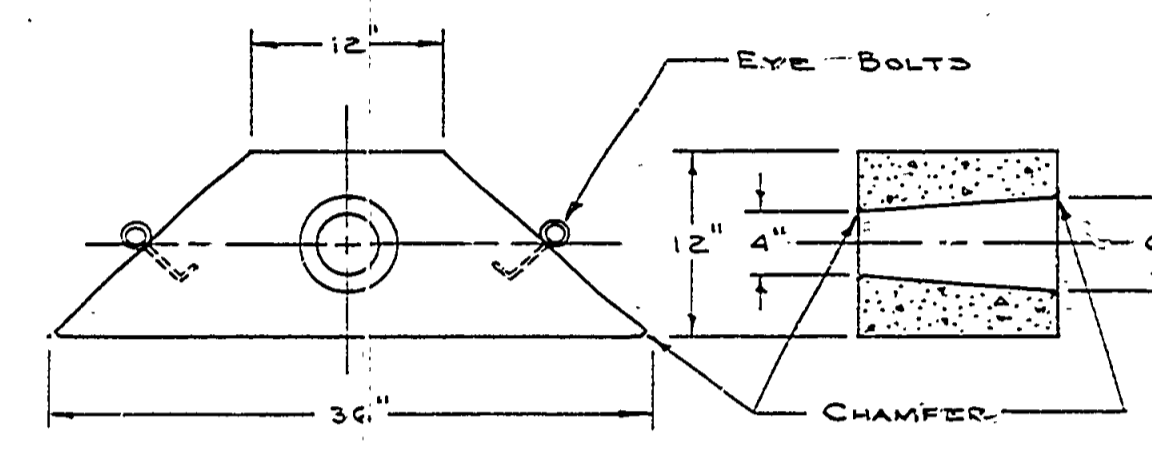
SECTION A-A



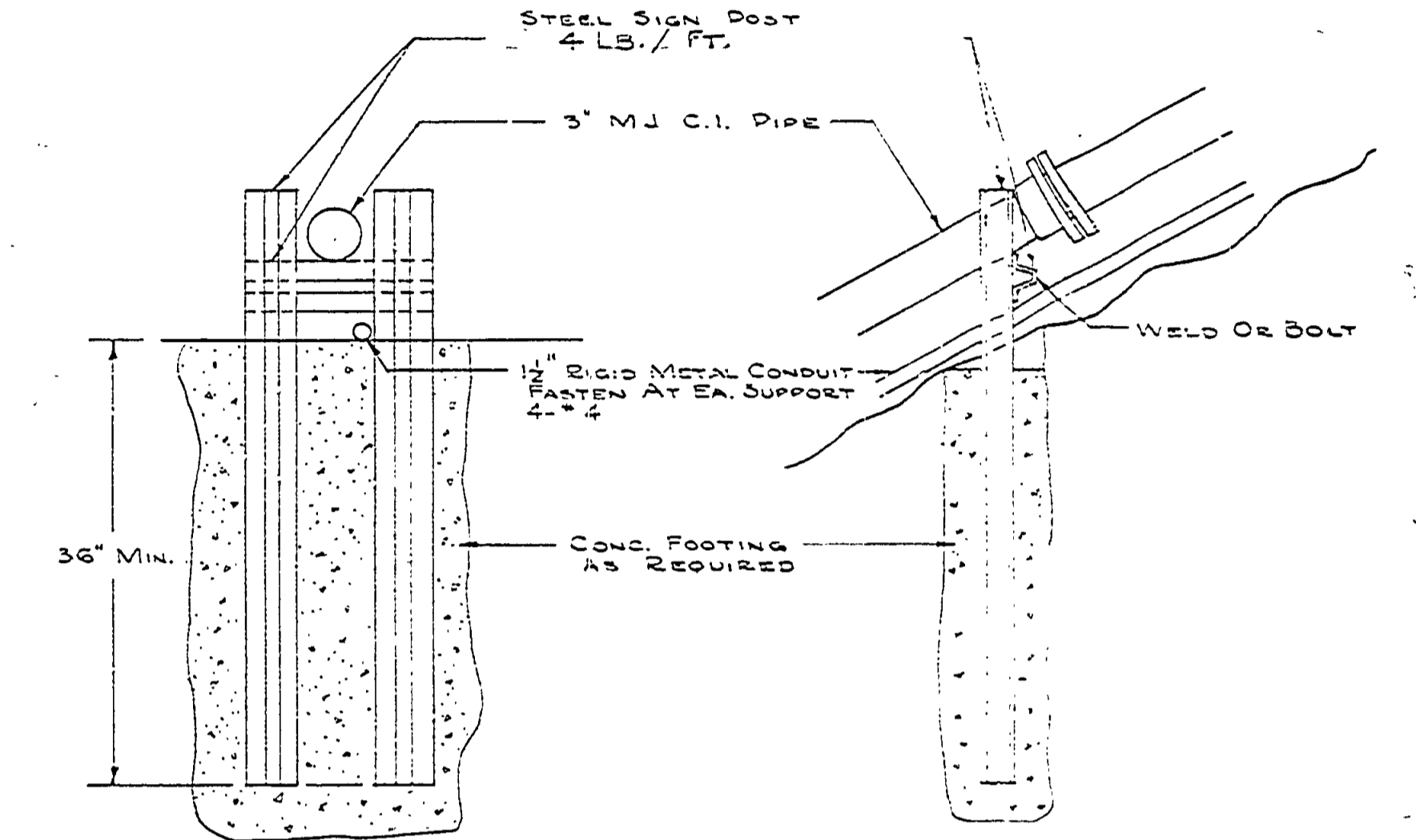
SECTION B-B

NOTE: WALLS ARE CONSTRUCTED OF CONCRETE BLOCK. APPLY 1/2" PLASTER COAT TO ALL OUTSIDE WALLS. BELOW GRADE WATERPROOF ALL WALLS BELOW GRADE WITH TWO COATS OF ASPHALT FOUNDATION PAINT.

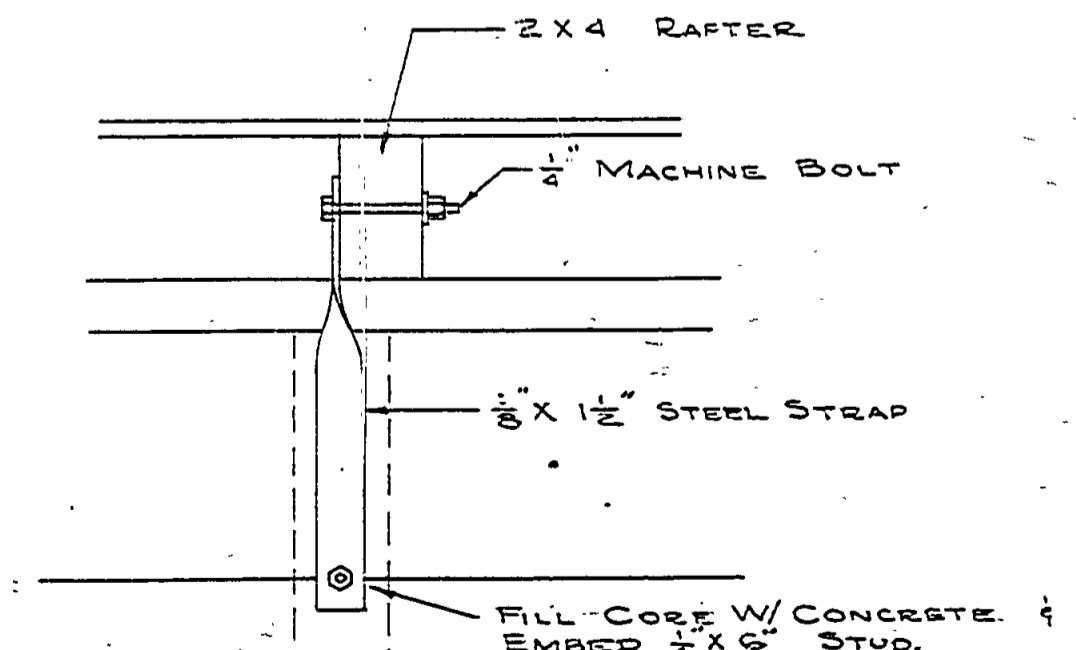
PUMP HOUSE
1'-0"



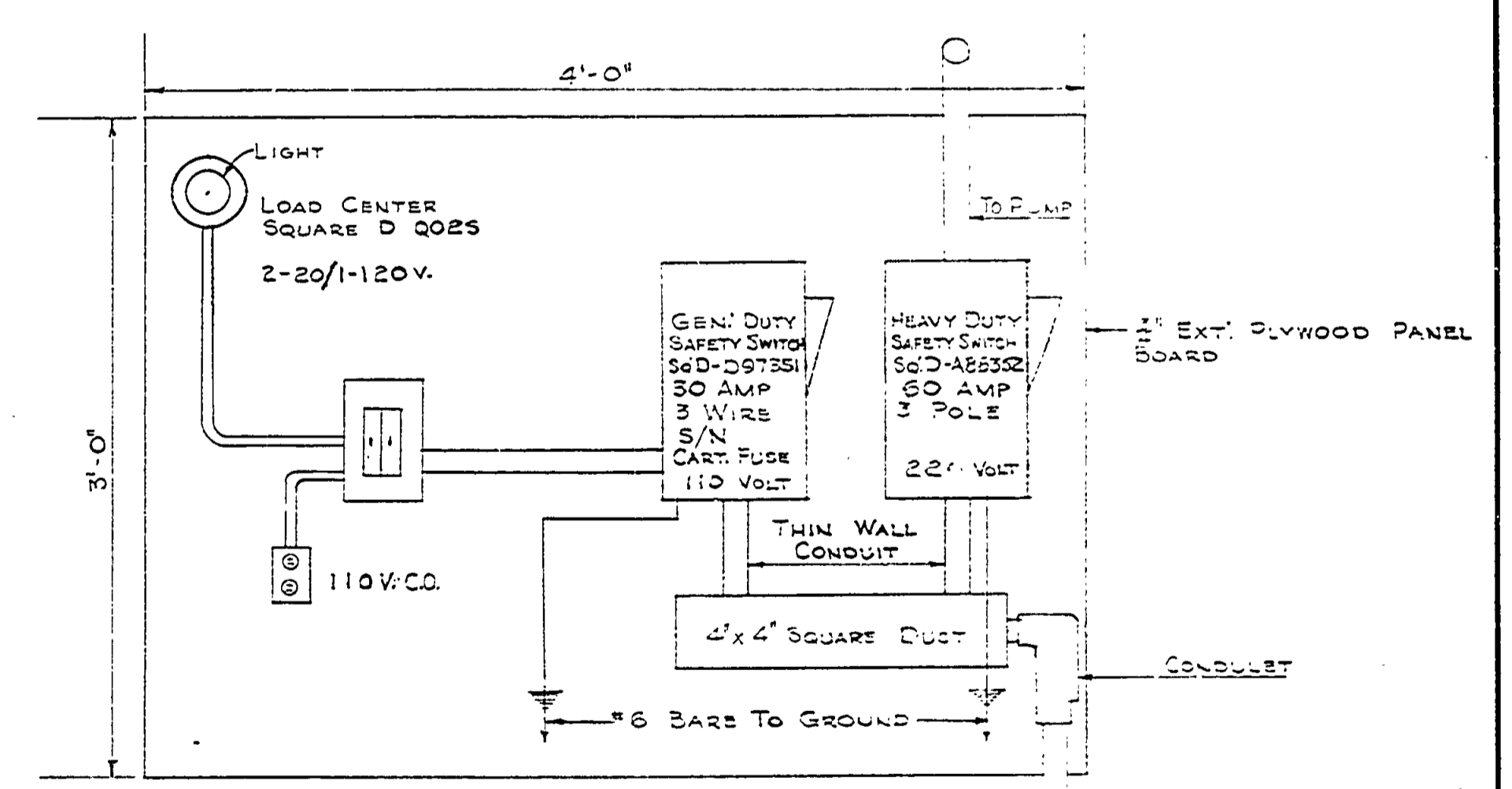
PIPE ANCHOR
1/4" = 1'-0"



PIPE SUPPORT DETAIL
TYPICAL FOR EACH JOINT
1/4" = 1'-0"



ROOF FASTENING DETAIL
1/4" = 1'-0"



PANEL BOARD DETAIL
1/4" = 1'-0"