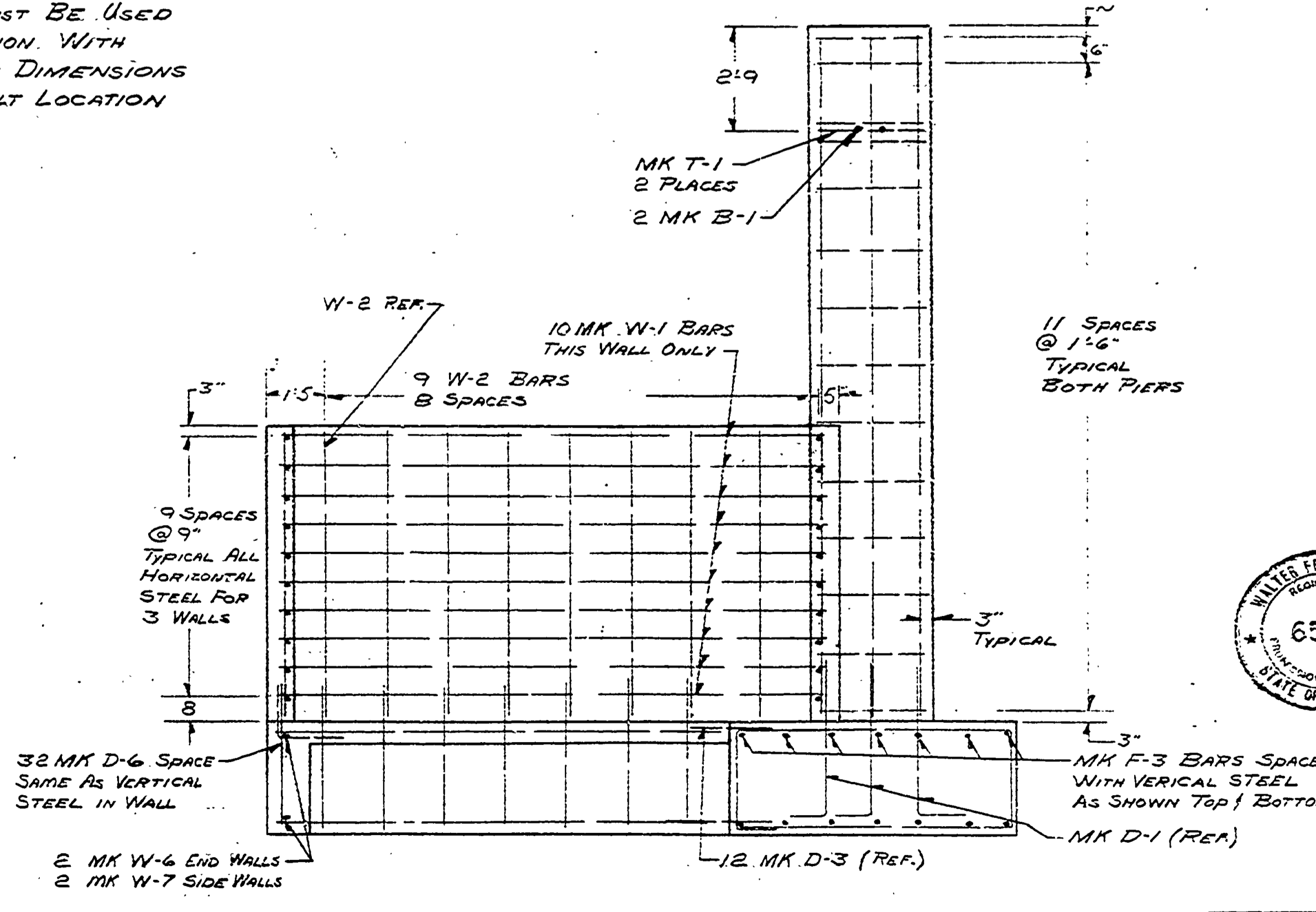
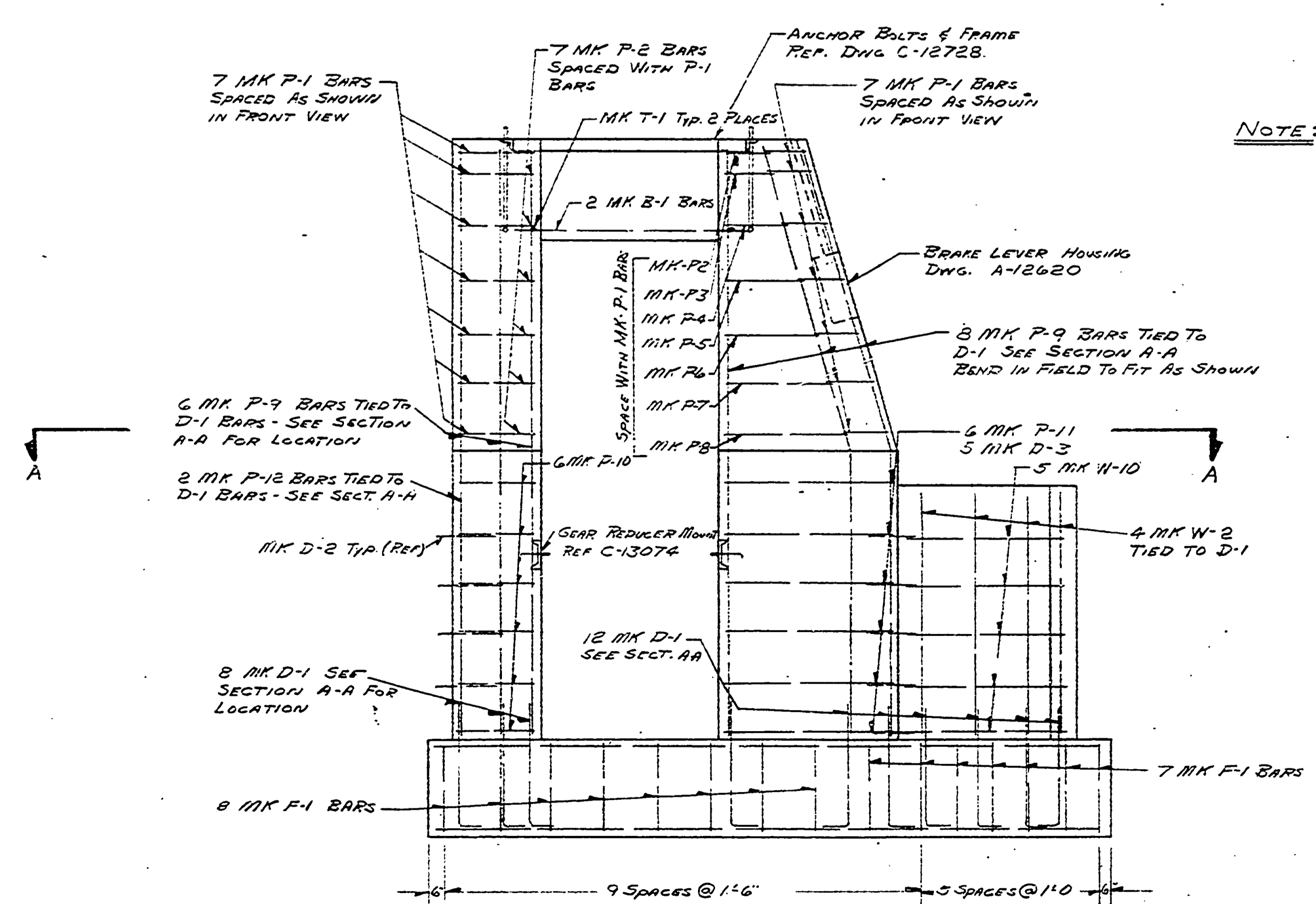
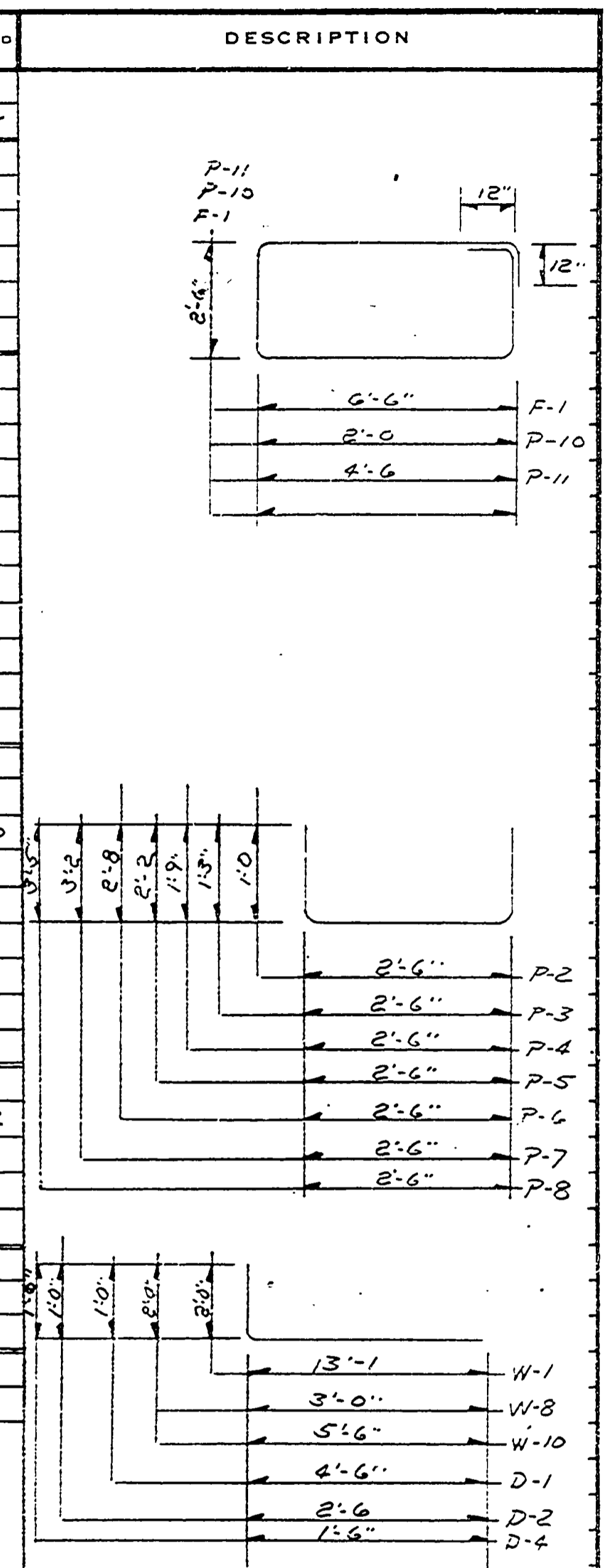


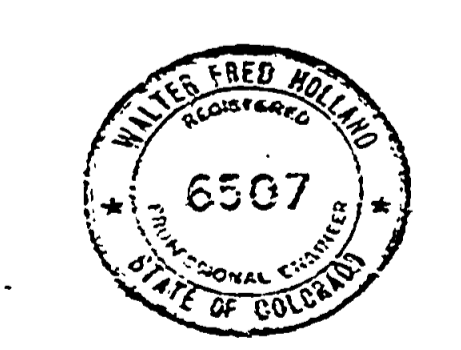
NOTE: THIS DWG MUST BE USED IN CONJUNCTION WITH SHEET 2 FOR DIMENSIONS & ANCHOR BOLT LOCATION

ITEM NO.	RECD	STRAIGHT BARS			BENT BARS				
		QUAN	SIZE	LENGTH	MARK	QUAN	SIZE	LENGTH	MARK
		14	#5	18'-8"	F-3	15	#4	20'-0"	F-1
		14	#5	17'-8"	P-9	14	#4	5'-5"	P-1
		2	#5	8'-8"	P-12	8	#4	4'-6"	P-2
						1	#4	5'-0"	P-3
						1	#4	6'-0"	P-4
						1	#4	6'-10"	P-5
						1	#4	7'-10"	P-6
						1	#4	8'-10"	P-7
						1	#4	9'-4"	P-8
						6	#4	11'-0"	P-10
						6	#4	16'-0"	P-11
		32	#4	7'-4"	W-2	10	#4	15'-1"	W-1
		10	#4	17'-2"	W-5	10	#4	5'-0"	W-8
		10	#4	3'-6"	W-9	5	#4	7'-6"	W-10
		4	#4	13'-2"	W-6				
		2	#4	17'-8"	W-7				
		17	#4	2'-6"	D-3	20	#5	5'-6"	D-1
		32	#4	4'-0"	D-6	5	#4	3'-6"	D-2
						25	#4	3'-0"	D-4
		2	#4	2'-6"	T-1				
		2	#4	8'-0"	B-1				
		210	#10	6" x 6" - 10-10	W.V. MESH				



SECTION B-B

FRONT VIEW



MINER-DENVER, INC.
34TH AND WALNUT
DENVER, COLORADO 80205

DATE: 7-15-67
DRAWING NO: D18260

DESCRIPTION: DRIVE TERMINAL FOUNDATION & MACHINE ROOM - REBAR PLACEMENT