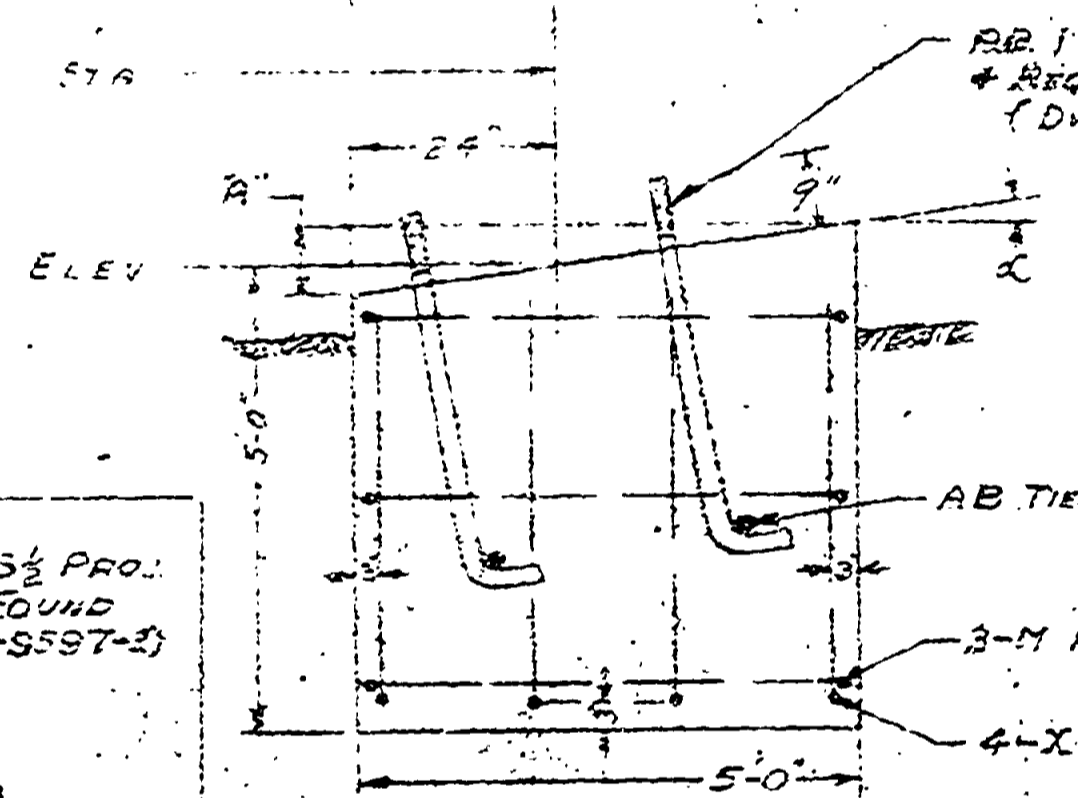
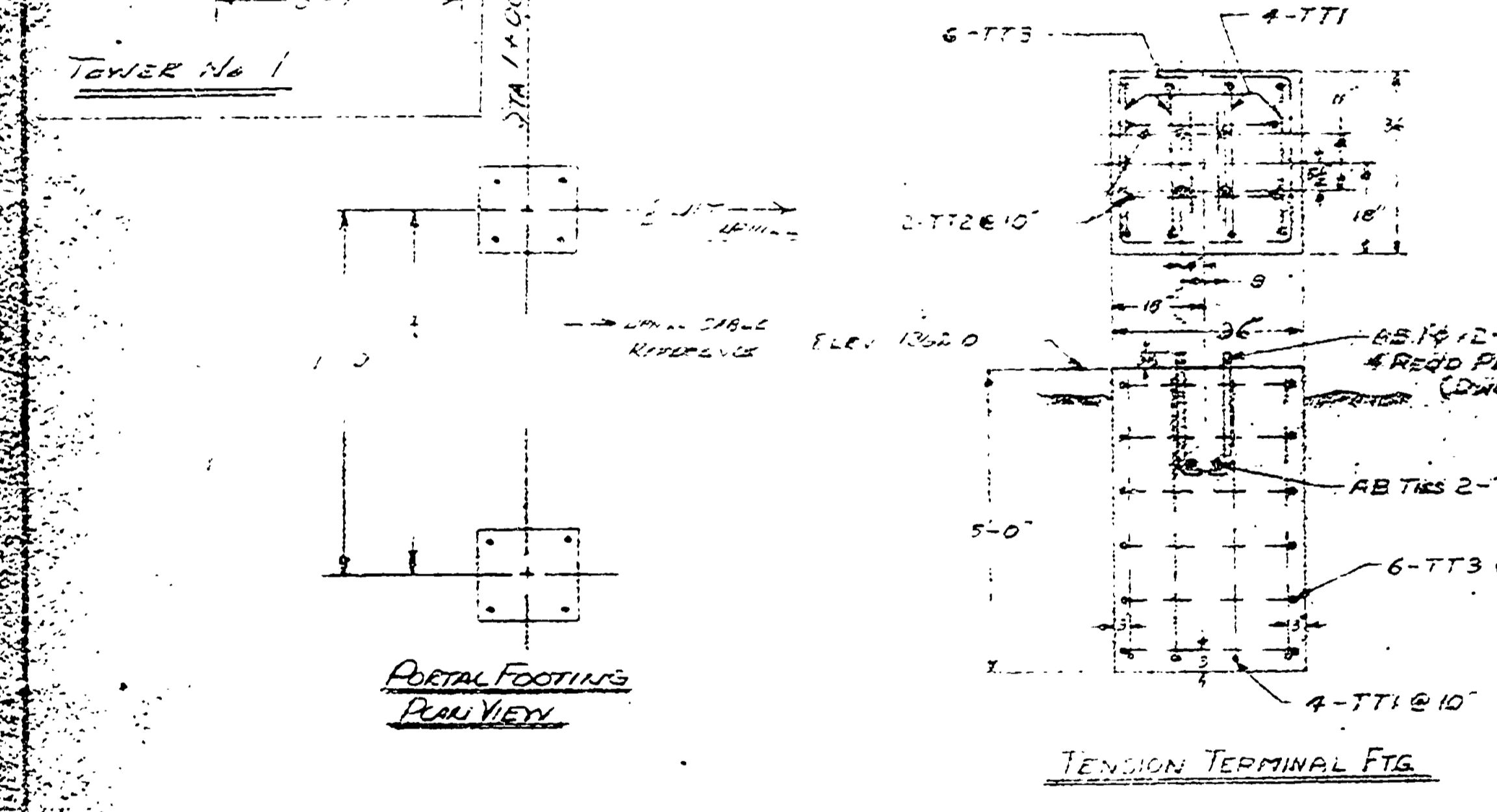


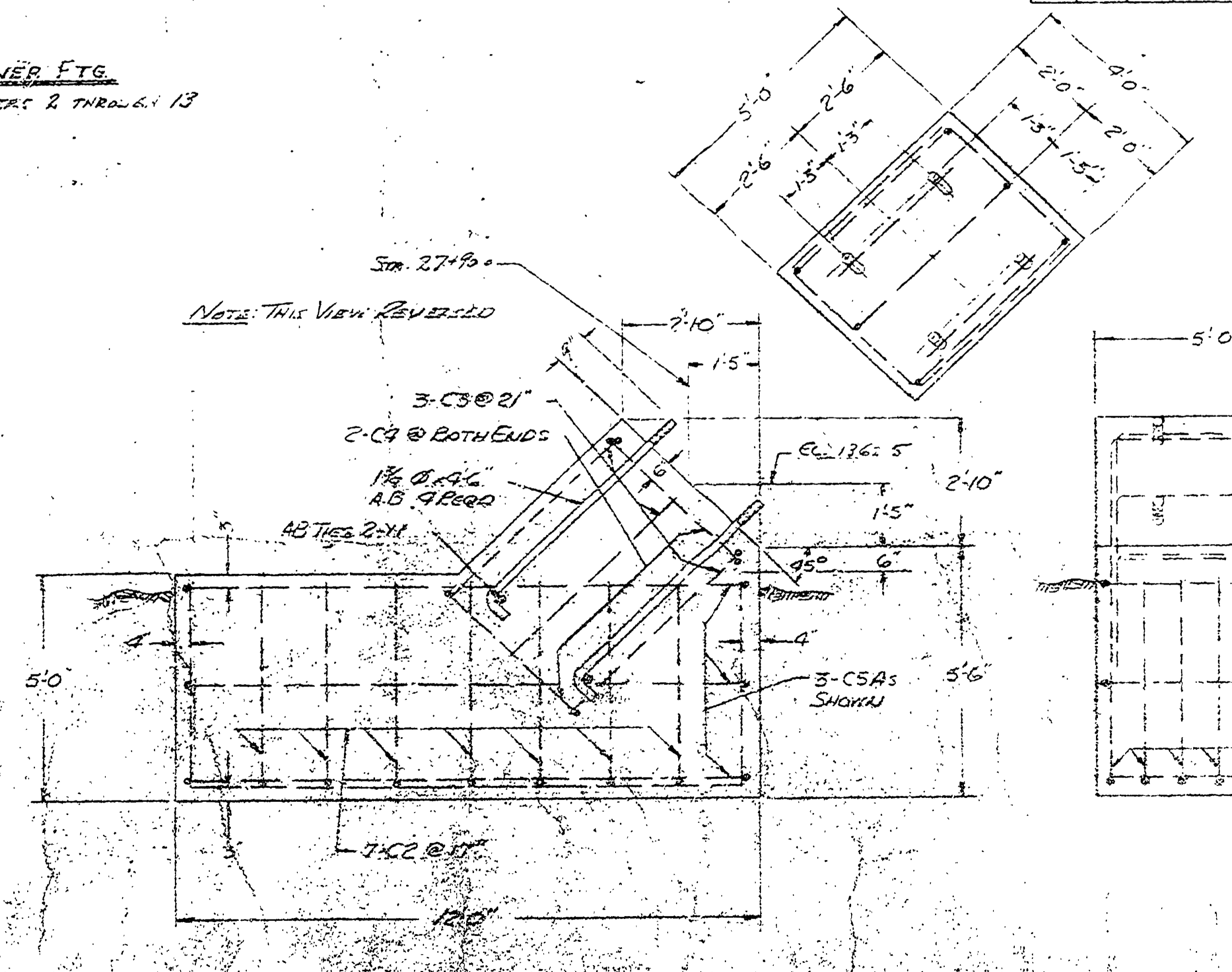
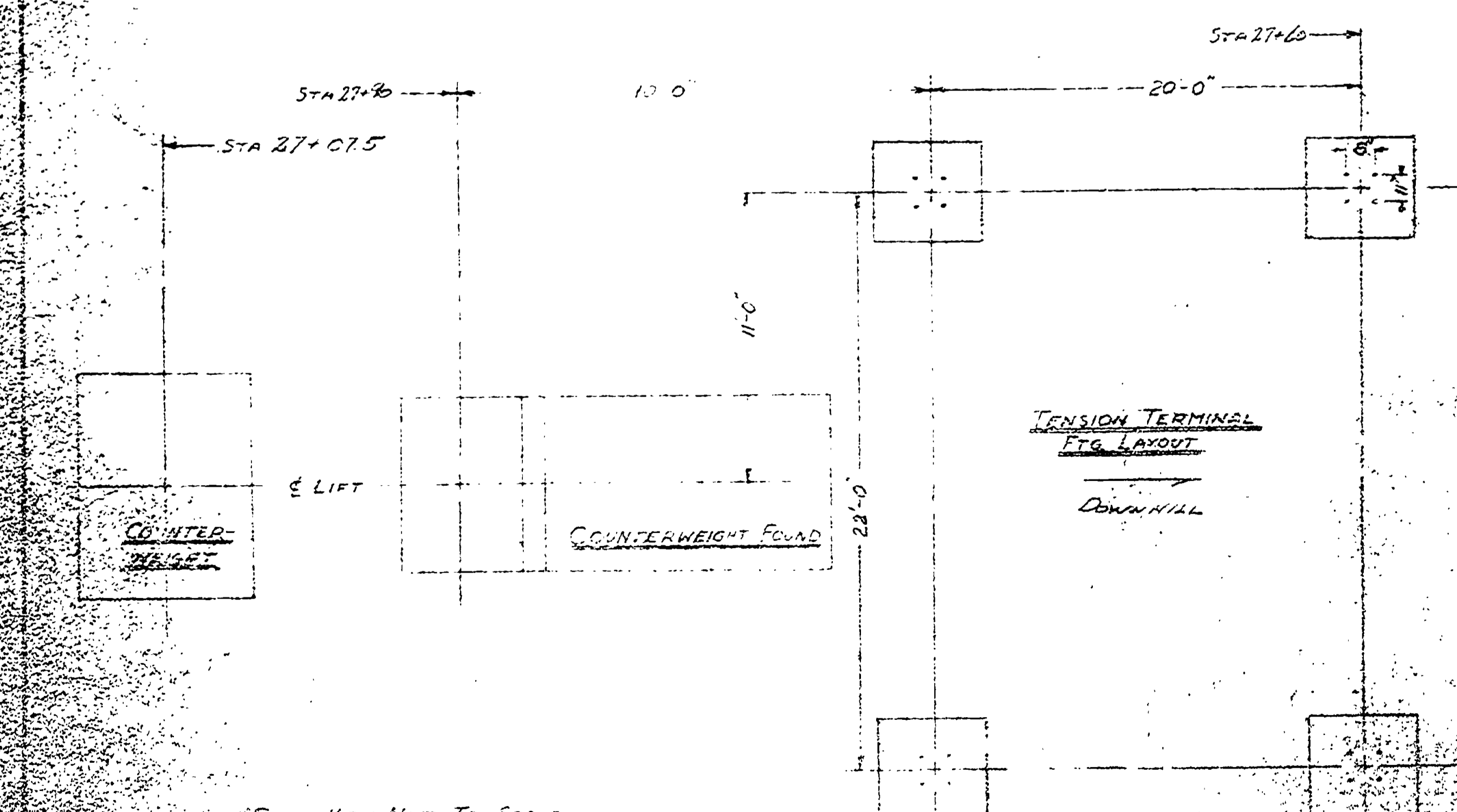
STATION	ELEVATION	PROF. PER FOUND	SLOPE	LENGTH	WIRE LENGTH	TOWER ANGLE	REBAR MARK	NO. OF REBAR PER
0+500	818.0							
2A	1+000	824.0		5'-0"	2'-6"	0°	X2 M2 T812	2
2B	1+000	834.0		5'-0"	2'-6"	0°	X2 M2 T812	2
3	7+728	853.0	1/2	7'-6"	3'-9"	23°	M7 T817	4
4	5+380	880.0	1/2	9'-8"	4'-10"	44°	X4 M4 T818	5
5	7+981	921.5	5/8	10'-5"	5'-2"	53°	X5 M5 T817	6
6	11+838	995.0	3/4	12'-7"	6'-4"	64°	X6 M6 T818	5
7	14+185	1040.0	7/8	14'-9"	7'-6"	74°	X7 M7 T818	5
8	17+546	1108.0	1	17'-12"	9'-10"	84°	X8 M8 T819	5
9	20+928	1189.0	1 1/2	20'-12"	11'-4"	94°	X9 M9 T819	5
10	23+108	1276.0	1 3/4	23'-6"	13'-10"	104°	X10 M10 T816	5
11	24+848	1335.0	1 3/4	24'-12"	14'-11"	114°	X11 M11 T817	3
12	25+520	1370.0	1 1/2	25'-9"	15'-9"	122°	X12 M12 T819	2
13	26+400	1354.0		6'-4"	3'-2"	0°	X13 M13 T817	3

STRAIGHT BARS			BENT BARS		
QUANT	LENGTH	MARK	QUANT	LENGTH	MARK
60	5'-4'-0"	T1	59	5'-13'-5"	T1
4	5'-0"	T2	4		T2
8	5'-2'-0"	TTA	3	3'-1"	M1
			7	5'-20'-4"	C1
			7	5'-15'-5"	C2
			3	5'-10'-5"	C3
			2	5'-16'-11"	C4
			3	5'-32'-7"	C5
			16	4'-11'-6"	TT1
			8	5'-11'-5"	TT2
			24	5'-11'-1"	TT3
			4	5'-12'-5"	X2
			4	5'-15'-11"	X3
			4	5'-18'-1"	X4
			4	5'-19'-1"	X5
			4	5'-19'-10"	X6
			4	5'-19'-10"	X7
			4	5'-19'-10"	X8
			4	5'-19'-10"	X9
			4	5'-19'-10"	X10
			4	5'-19'-10"	X11
			4	5'-19'-10"	X12
			4	5'-19'-10"	X13
			4	5'-19'-10"	X14
			4	5'-19'-10"	X15
			3	3'-18'-4"	M2
			3	3'-18'-9"	M3
			3	3'-28'-1"	M4
			3	3'-29'-5"	M5
			3	3'-27'-9"	M6
			3	3'-27'-9"	M7
			3	3'-28'-5"	M8
			3	3'-28'-5"	M9
			3	3'-26'-1"	M10
			3	3'-27'-1"	M11
			3	3'-19'-5"	M12
			3	3'-21'-5"	M13

\* PORTAL TOWERS TWO FOUND. REQU SEE PLAN VIEW



TOWER FTG. TOWERS 2 THROUGH 13



MARK	LENGTH
M1	5'-2"
C1	11'-5"
C2	11'-5"
TT1	2'-7"
M2	4'-6"
M3	7'-0"
M4	9'-2"
M5	9'-10"
M6	9'-0"
M7	9'-0"
M8	7'-4"
M9	7'-4"
M10	7'-2"
M11	7'-8"
M12	4'-10"
M13	5'-10"

DRAWINGS AND SPECIFICATIONS AS INSTRUMENTS OF SERVICE ARE THE PROPERTY OF MINER-DENVER, INC., DENVER, COLORADO (USA) AND ARE AUTHORIZED TO BE USED ONLY FOR THE PROJECT FOR WHICH THEY ARE FURNISHED, AND ARE TO BE RETURNED TO MINER-DENVER, INC. OR THEIR APPOINTED AGENT ON DEMAND.

MINER-DENVER  
MINER MACHINE CO.  
DENVER 8, COLORADO

