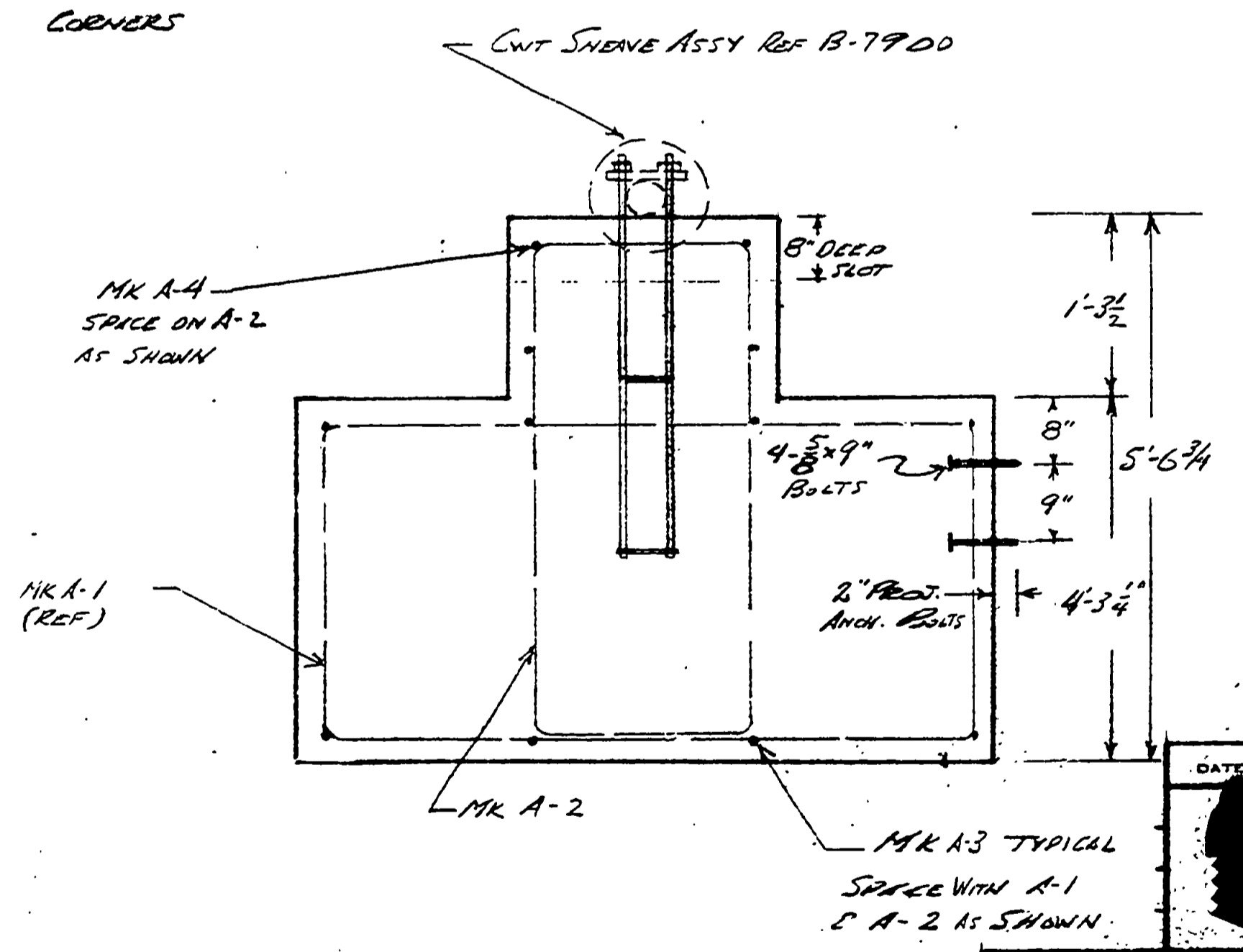
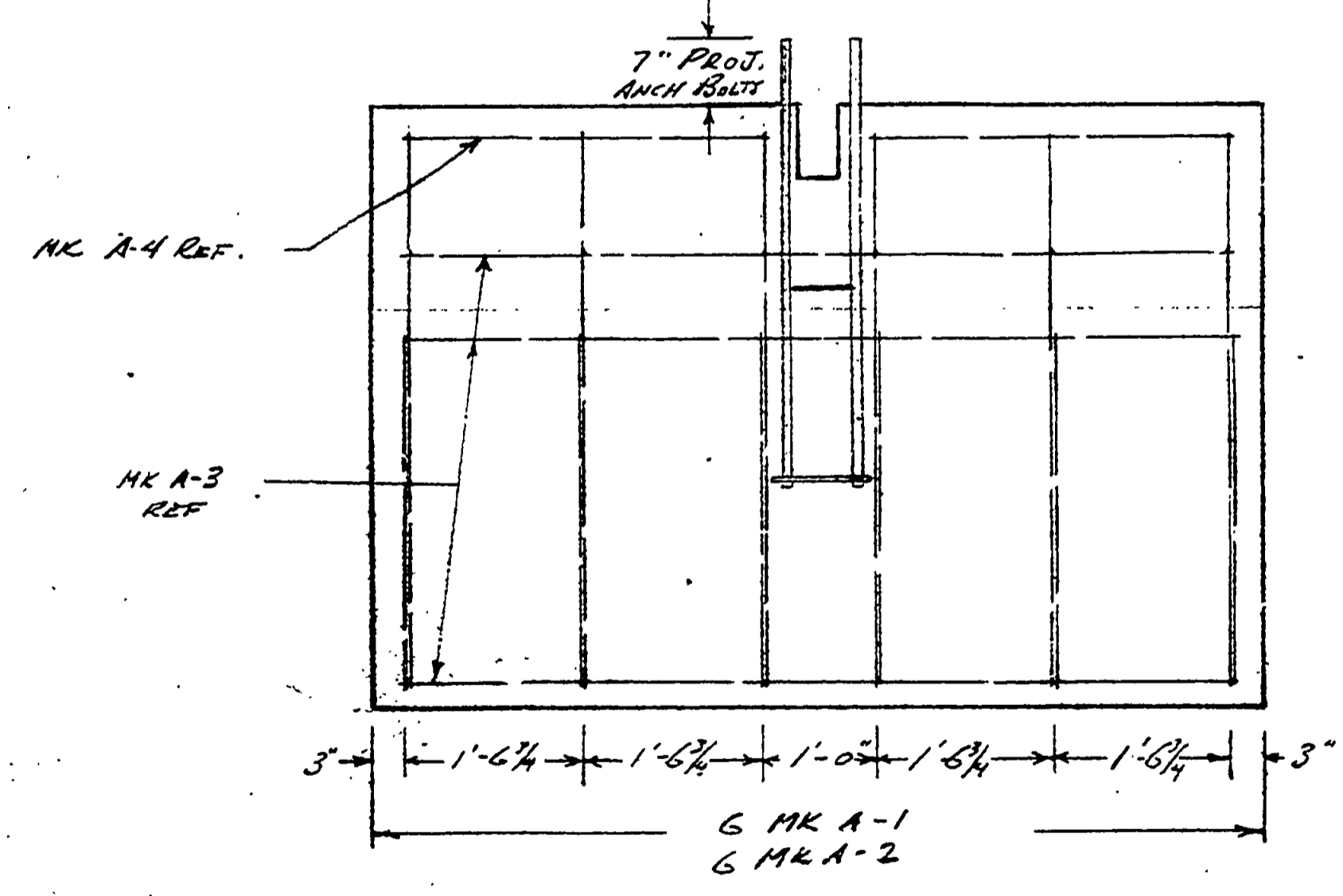
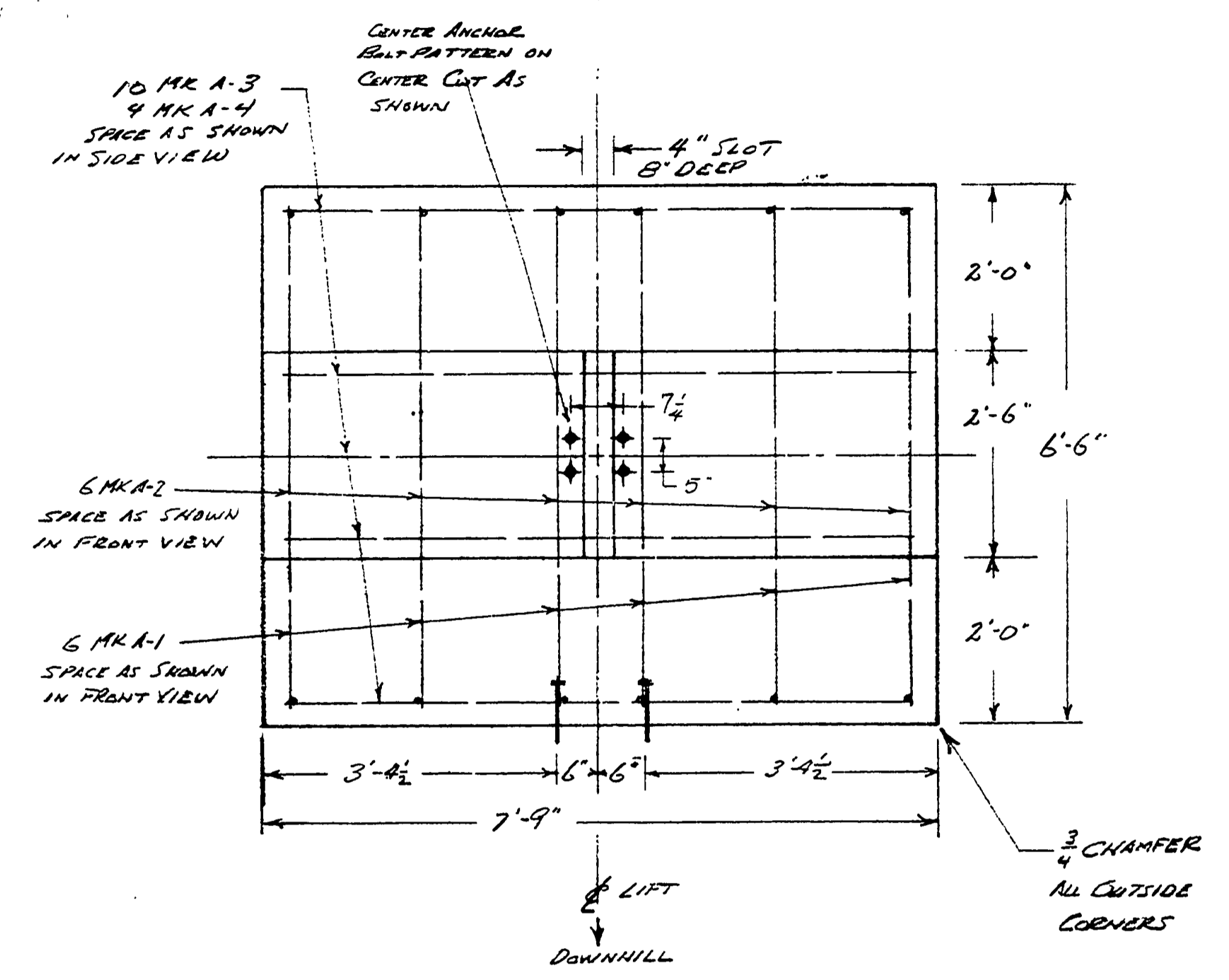
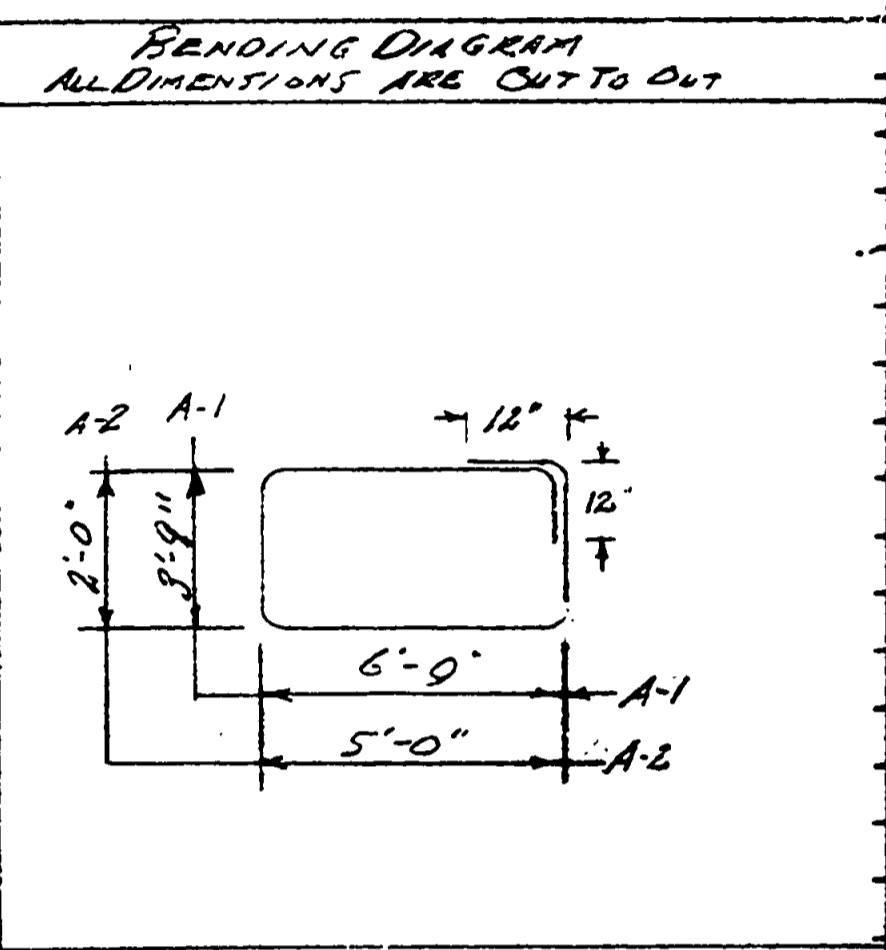


ITEM NO.	REQ D	DESCRIPTION
1	1	CWT SHAFT ASSY. 18-7900
2	4	3/8"-11 UNC HEX BOLTS x 9" WITH NUTS

STRAIGHT BARS			BENT BARS		
QTY	SIZE	LENGTH	QTY	SIZE	LENGTH
10	#5	7'-3"	6	#4	21'-6"
4	#5	3'-2"	6	#4	16'-0"



MINER-DENVER, INC.
34TH AND WALNUT
DENVER, COLORADO 80205

DATE: _____ REVISION: _____ BY: _____

MINER-DENVER CHAIRLIFT
PORCUPINE MOUNTAIN STATE PARK

36,000 LB. COUNTERWEIGHT FOR
SUPPORTED TENSION TERMINAL

DRAWING NO. C18266

REFERENCE
DRAWINGS AND SPECIFICATIONS AS INSTRUMENTS OF SERVICE ARE THE PROPERTY OF MINER-DENVER, INC., DENVER, COLORADO (USA). WHETHER THE WORK FOR WHICH SUBMITTED IS EXECUTED OR NOT, AND ARE NOT TO BE USED FOR OTHER PURPOSE WITHOUT THE SPECIFIC KNOWLEDGE AND PERMISSION OF MINER-DENVER, INC.