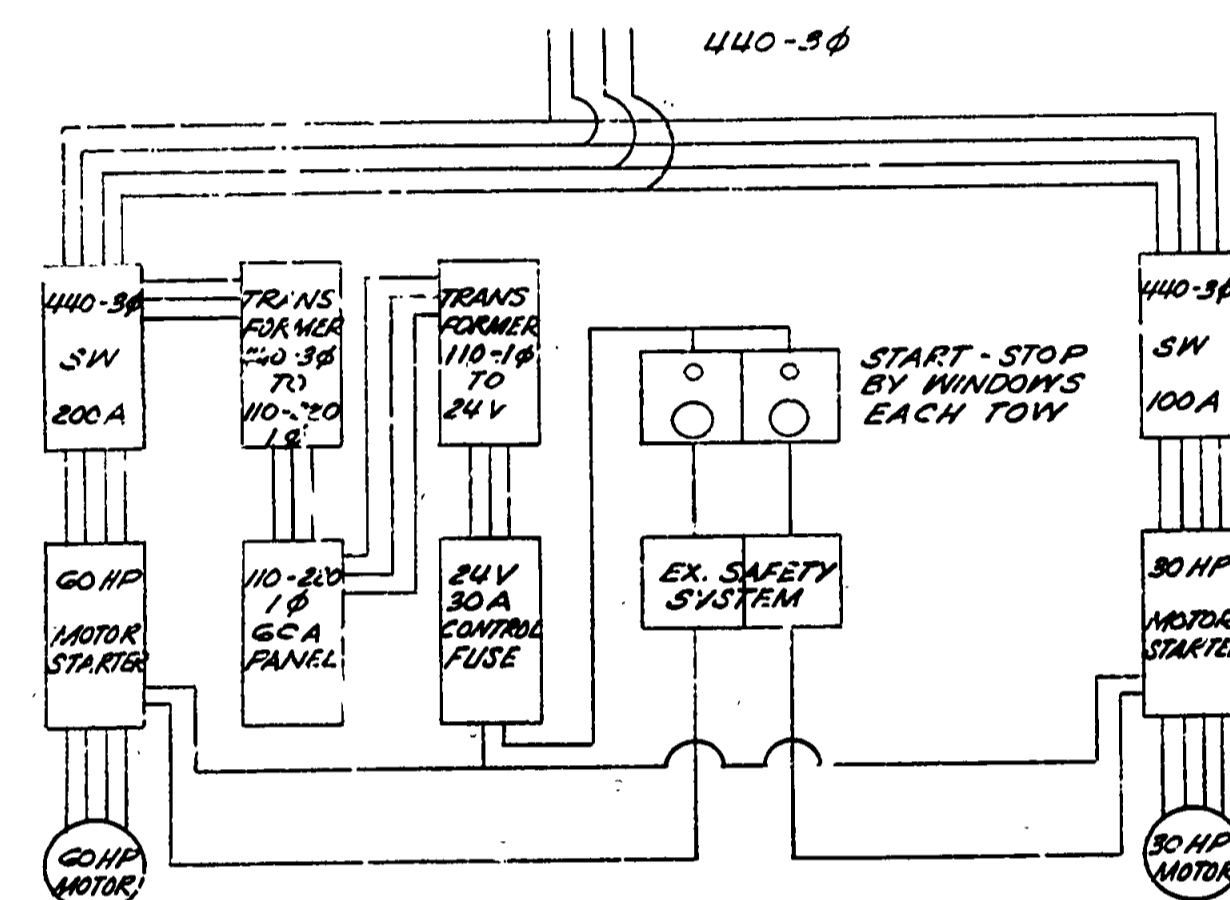


CO. 15 LINE SW'S IN ONE 400 A. SW IS INCORPORATED IN PANEL ENCLOSURE.

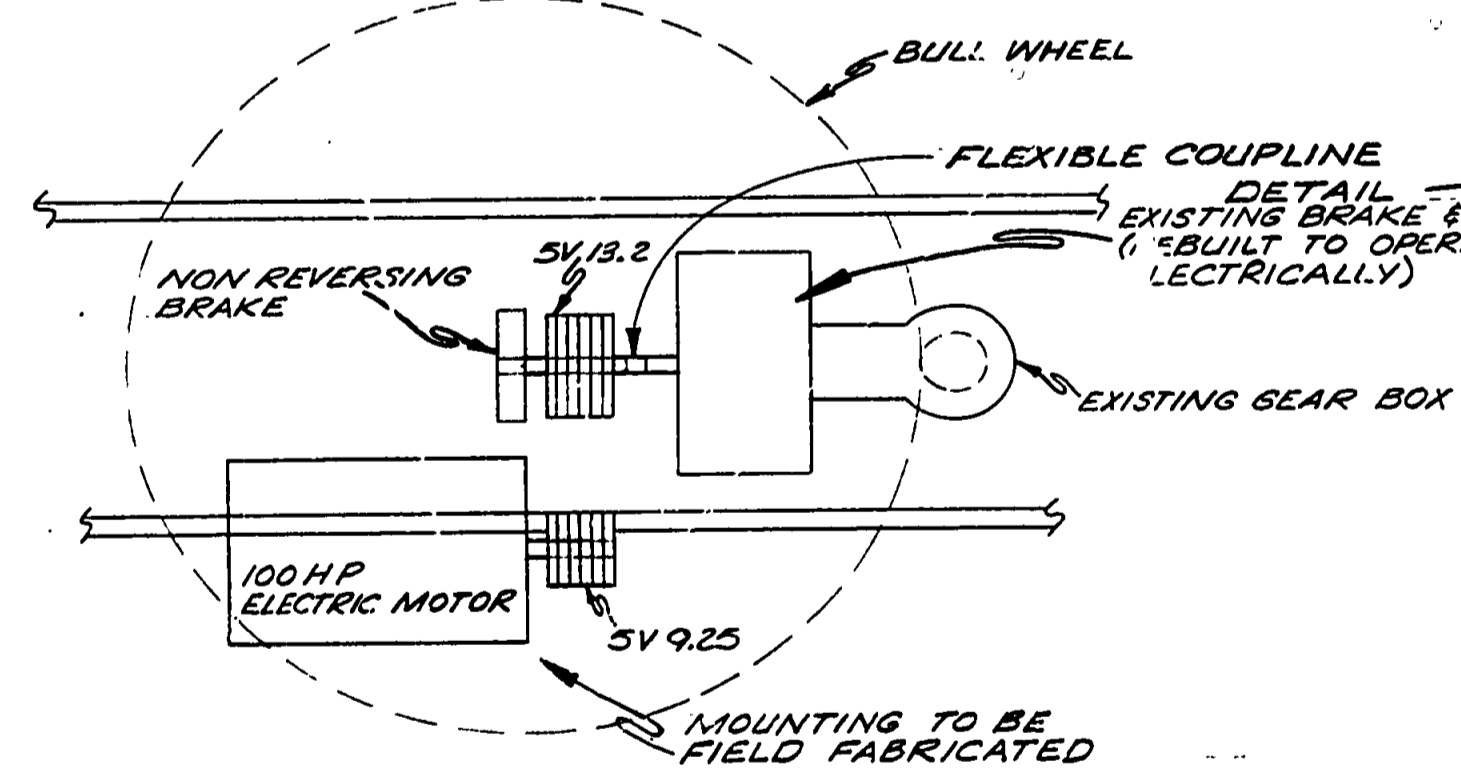
ELECTRICAL SYSTEM TEE BAR TOWS NO SCALE



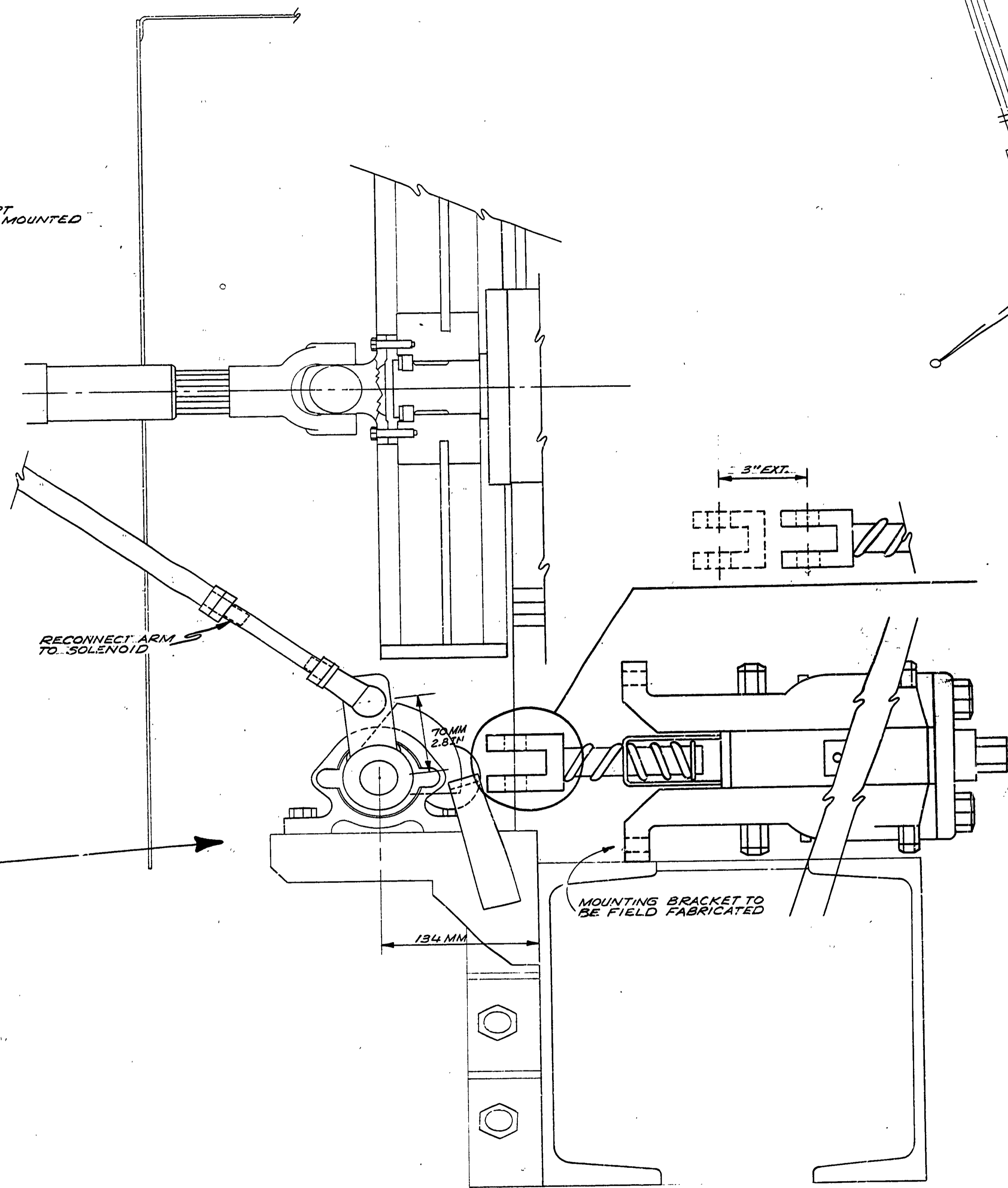
ALL ELECTRICAL COMPONENTS EXCEPT PUSH BUTTON STOP-START MAY BE MOUNTED IN ONE CONTROL CABINET.

ELECTRICAL SYSTEM ROPE TOWS NO SCALE

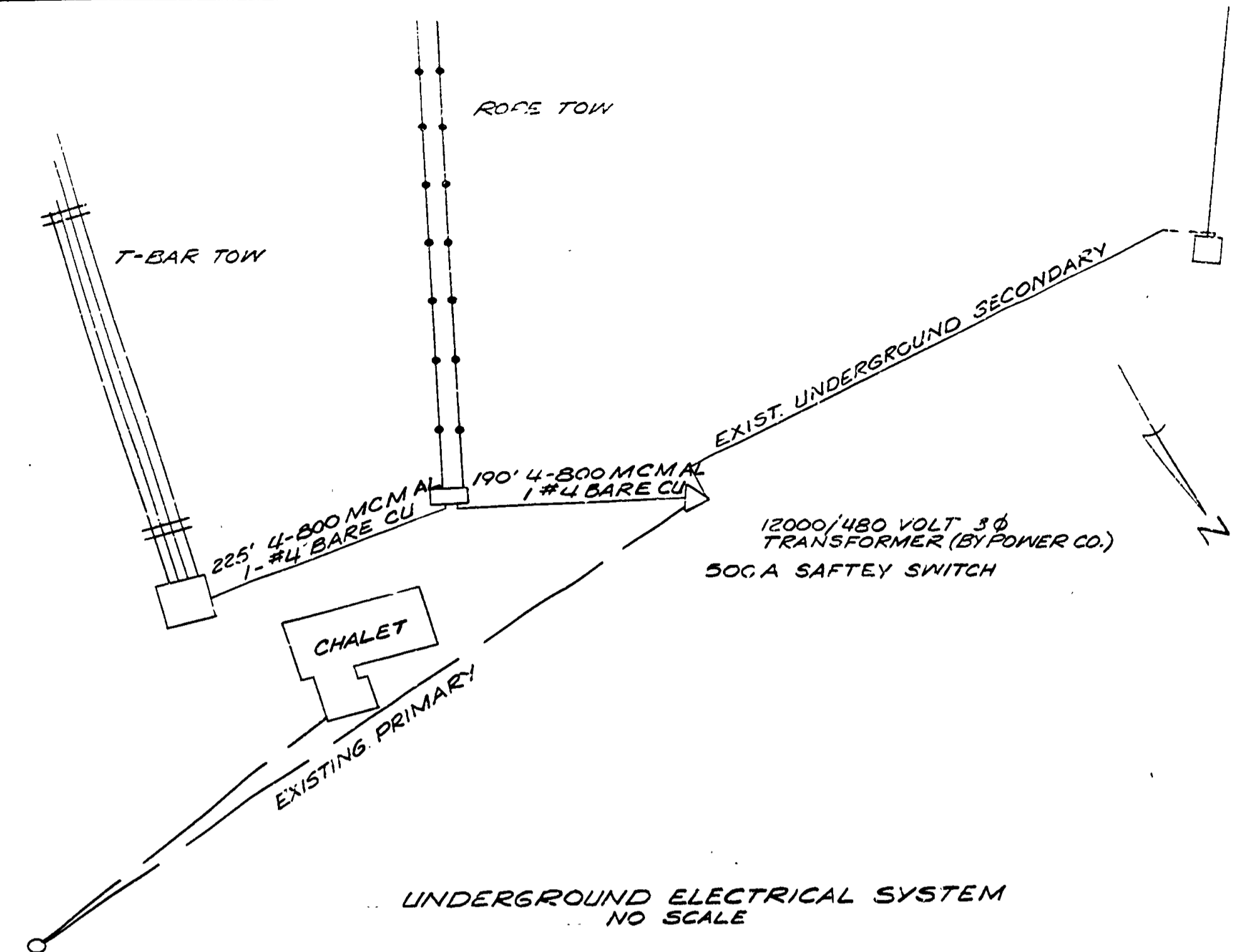
COMBINE SW'S IN ONE 200A SW IF INCORPORATED IN PANEL ENCLOSURE.



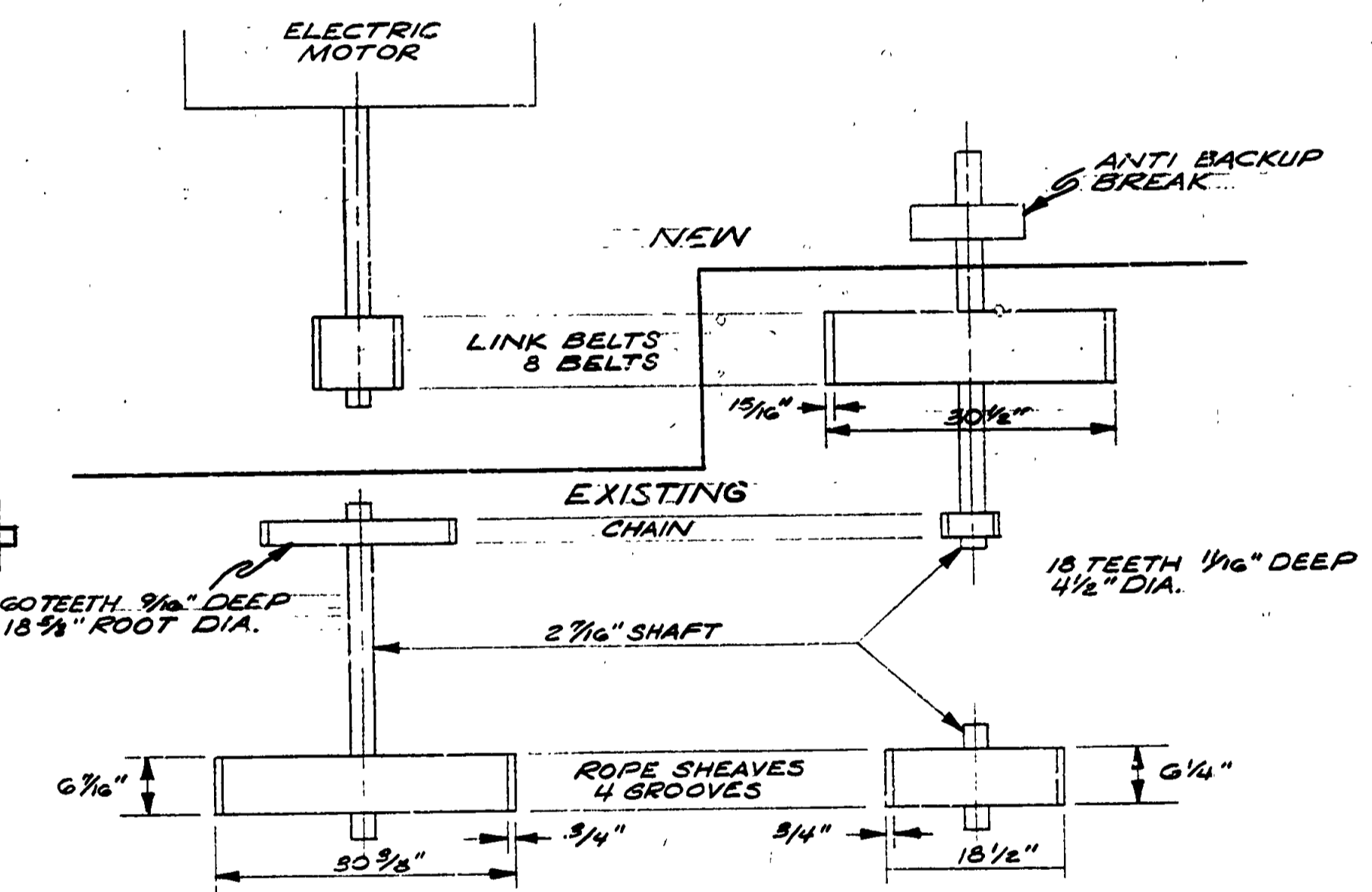
PLAN VIEW TEE BAR DRIVE SYSTEM 1" = 2'-0"



BRAKE CONVERSION DETAIL NO SCALE



UNDERGROUND ELECTRICAL SYSTEM NO SCALE



ROPE TOWS PLAN VIEW NO SCALE

BUILDING COMMITTEE APPROVAL	
BY: _____	DATE _____
RECOMMENDED FOR APPROVAL: <i>J.P. [Signature]</i> 2-24-71	
ENGINEERING OR ARCHITECTURAL SUPERVISOR DATE	
RECOMMENDED FOR APPROVAL: <i>G.P. [Signature]</i> 2-26-71	
PROJECT AND LOG COORDINATOR DATE	
DIVISION / REGION APPROVAL	
BY: <i>Paul R. [Signature]</i> 3-2-71	DATE
DIVISION CHIEF / REGIONAL ENGINEER	
ENGINEERING DIVISION	
APPROVED: <i>H.C. [Signature]</i> 3-3-71	DATE
CHIEF ENGINEER	

SURVEYED BY	DRAWN BY M. STEVENS	2/18/71	NO. DATE BY	REVISIONS	NO. DATE BY	REVISIONS	MICHIGAN DEPARTMENT OF NATURAL RESOURCES	PLAN & DETAIL SHEET	PORCUPINE MTNS. STATE PARK AREA OR PARK	PROJECT NO. 24-1083	SHEET 1 OF 1	PLAN NO. E-126
DESIGNED BY R.H. MERRILL	CHECKED BY	2-23-71	1.		3.			SHEET TITLE	PROJECT SKI TOW MOTOR CONVERSIONS			
	DATE		2.		4.							