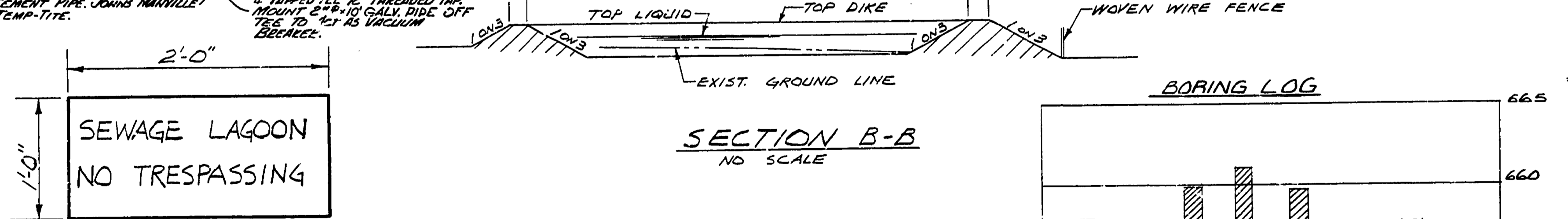
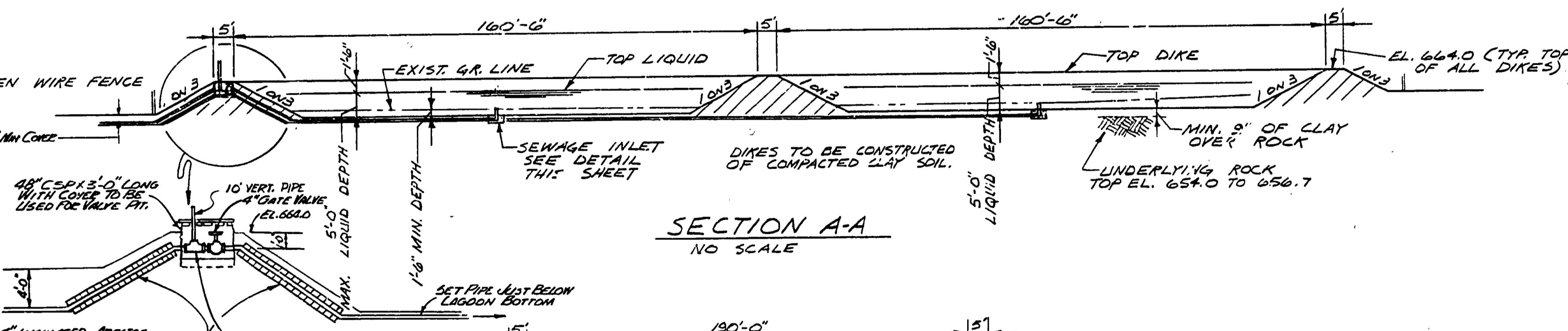
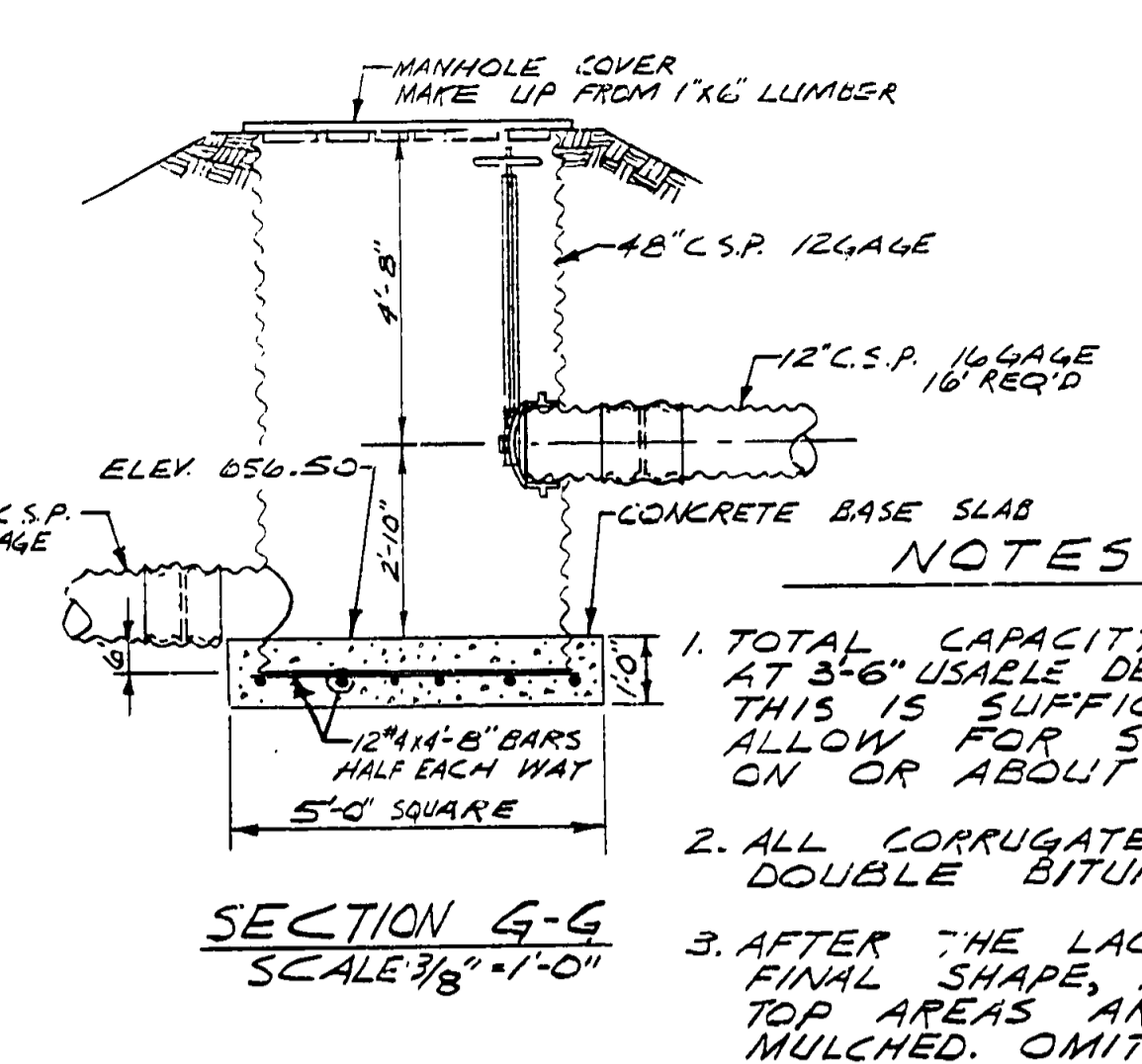
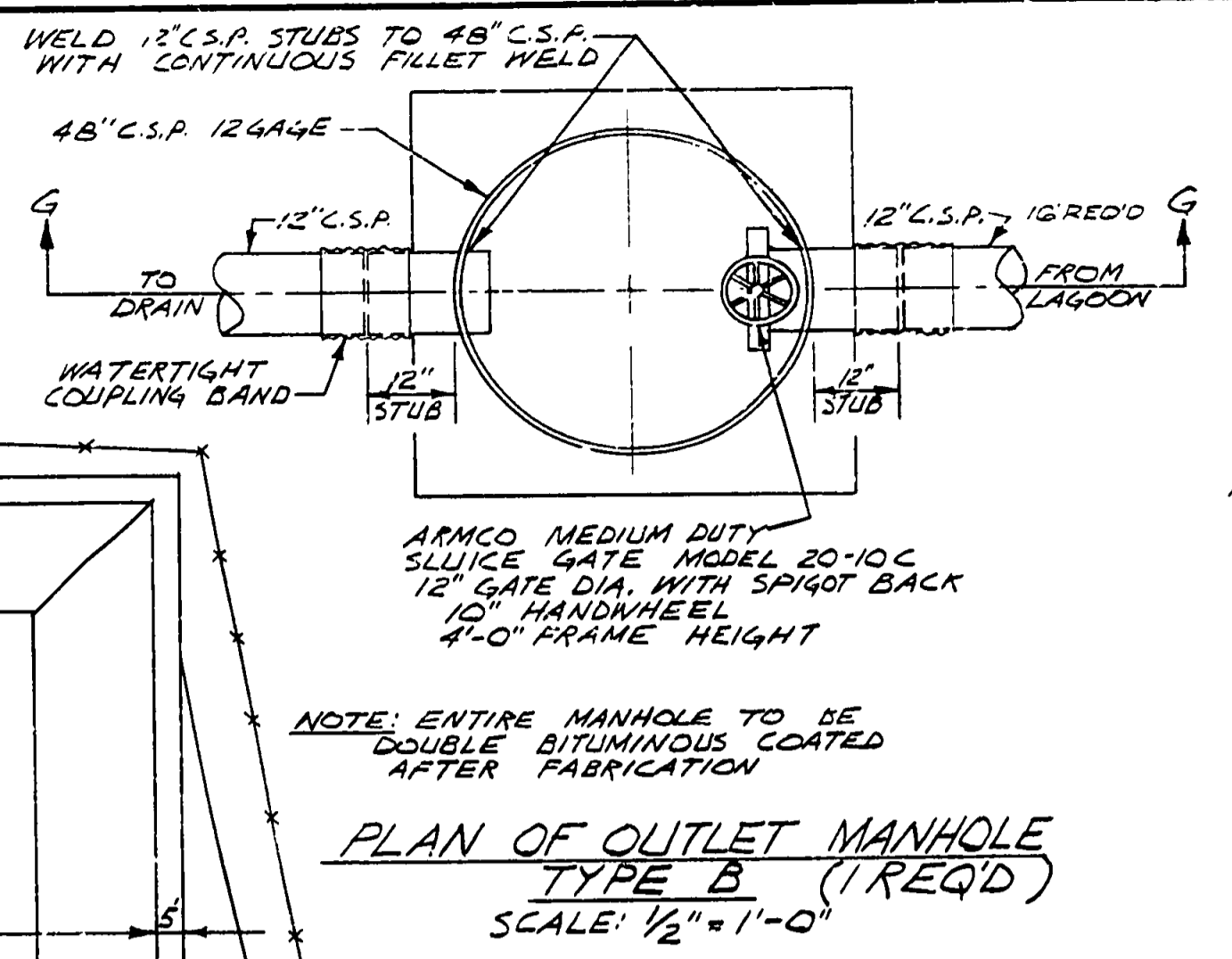
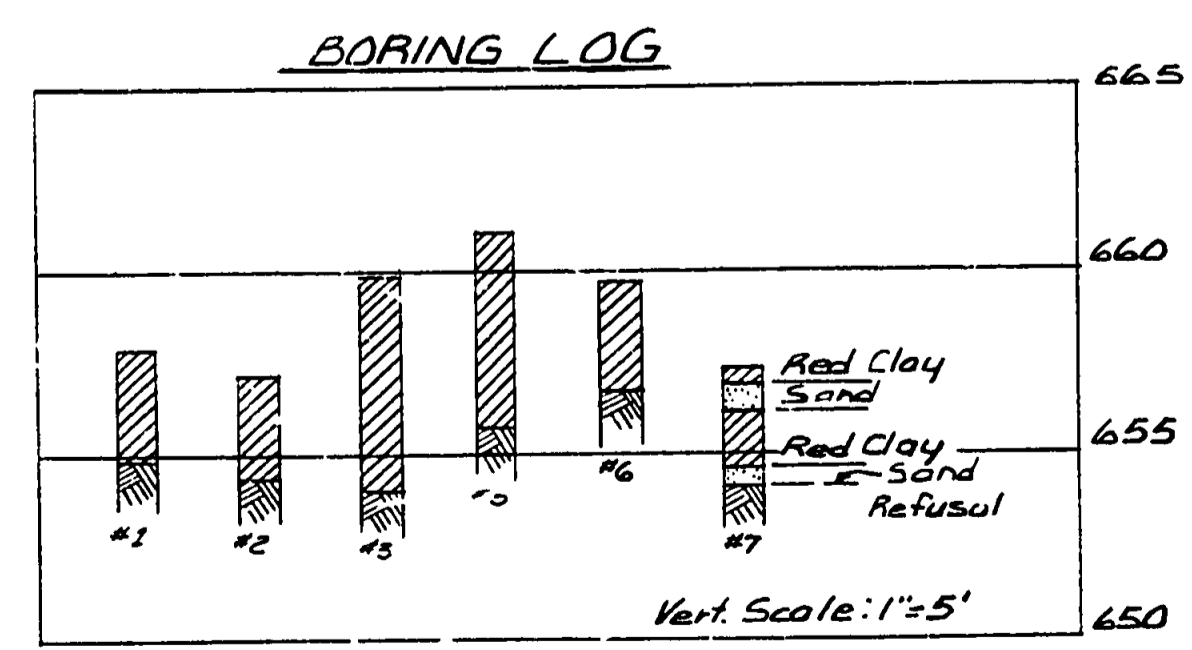


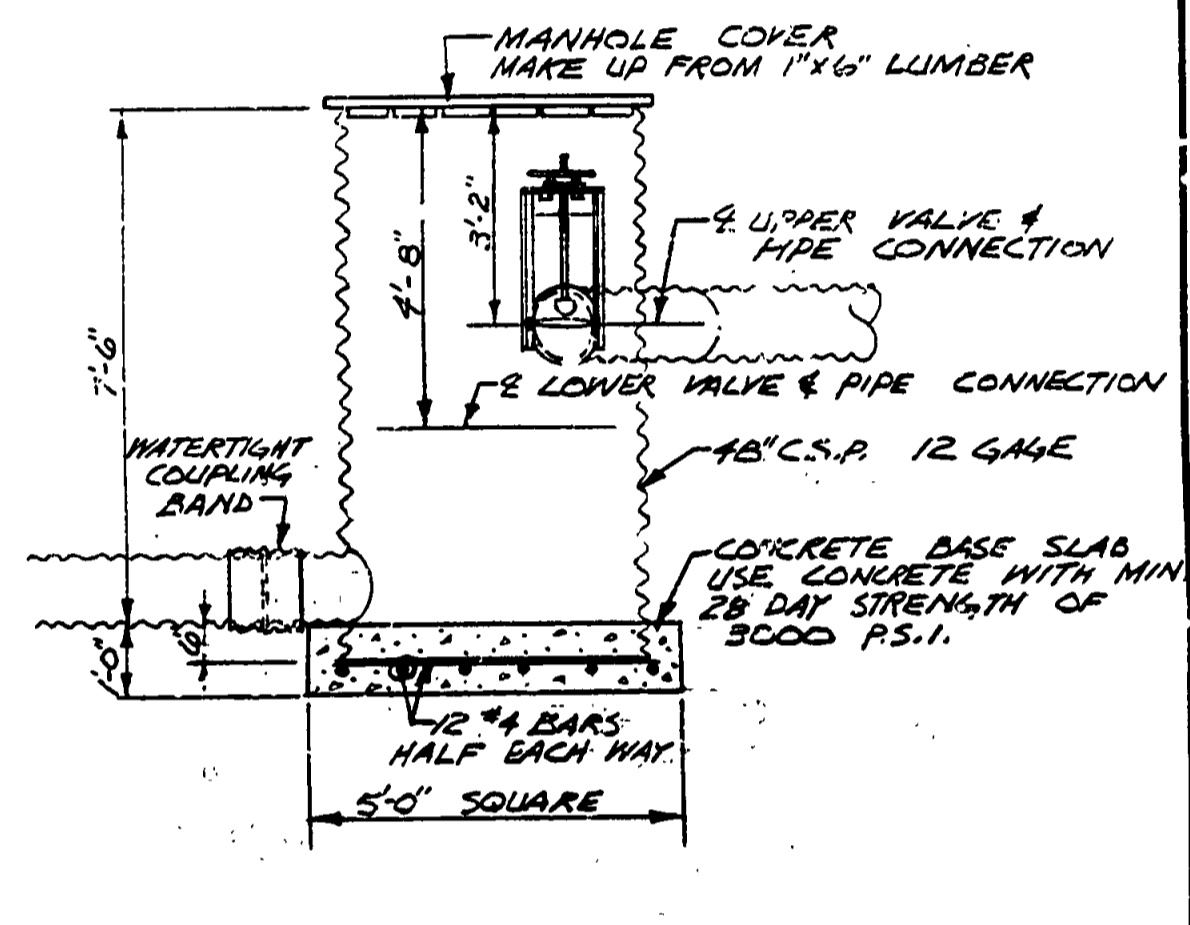
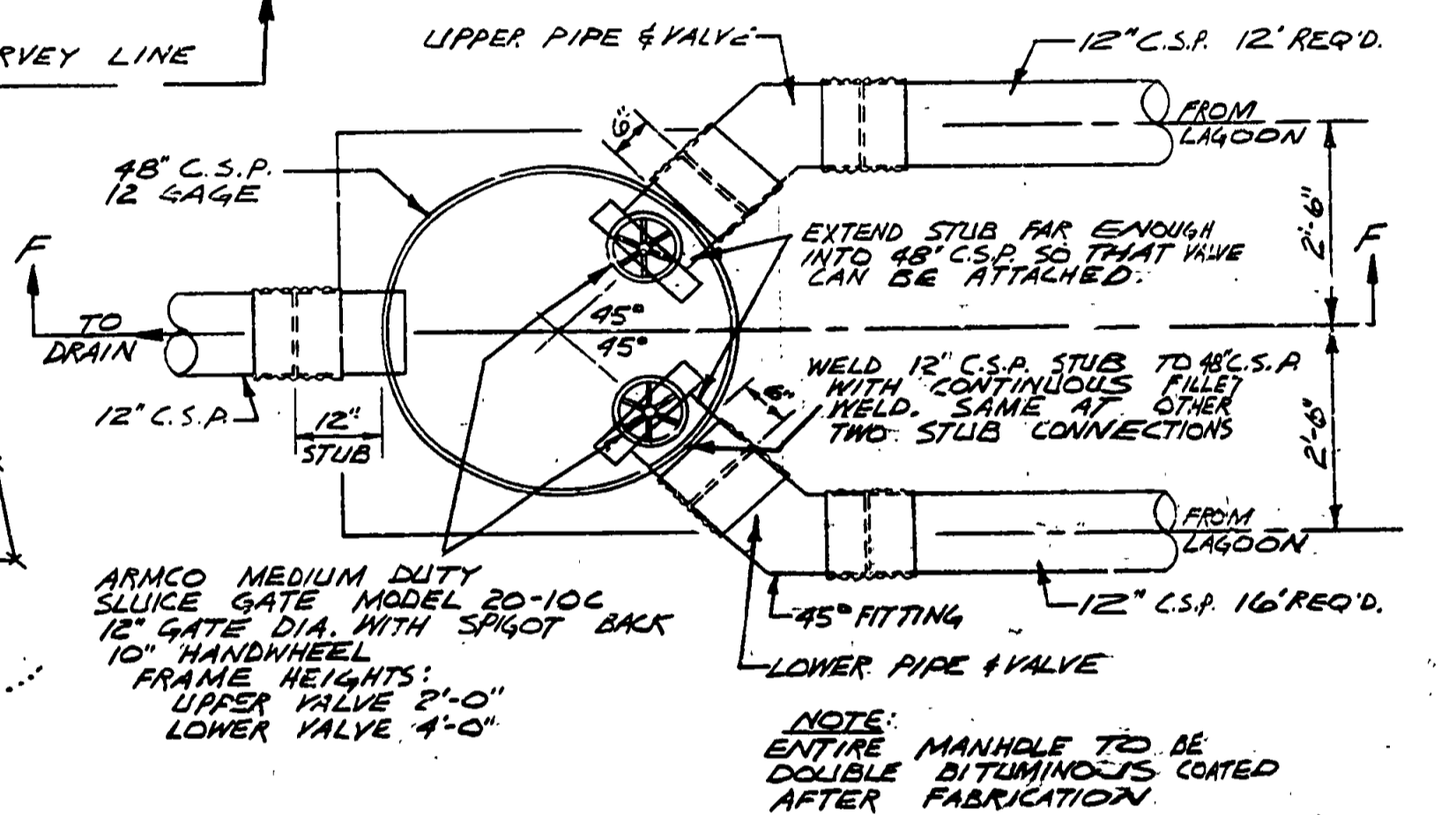
INLET DETAIL



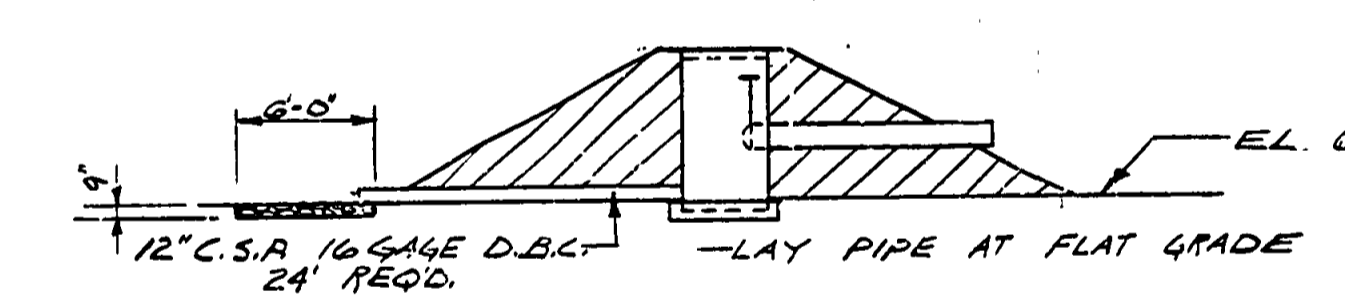
**WARNING SIGN DETAIL**  
PLACE THE SIGNS ON THE WIRE FENCING - TWO PER SIDE. A TOTAL OF EIGHT SIGNS IS REQUIRED.



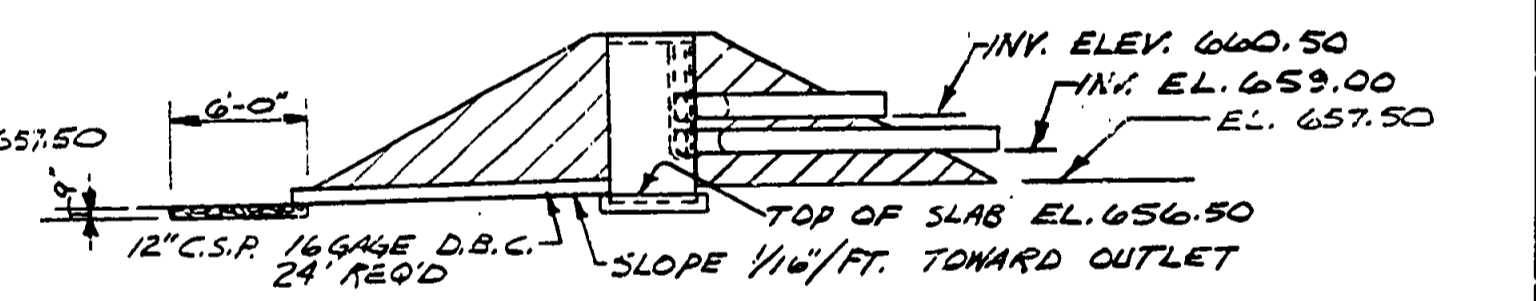
- NOTES:**
- TOTAL CAPACITY OF BOTH LAGOONS AT 3'-6" USABLE DEPTH IS 1,260,000 GALLONS. THIS IS SUFFICIENT STORAGE TO ALLOW FOR SEMI-ANNUAL DISCHARGES ON OR ABOUT APRIL 15 & OCTOBER 15.
  - ALL CORRUGATED STEEL PIPE TO BE DOUBLE BITUMINOUS COATED.
  - AFTER THE LAGOONS ARE GRADED TO FINAL SHAPE, ALL DIKE SLOPES AND TOP AREAS ARE TO BE SEEDED AND MULCHED. OMIT AREAS TO BE BELOW WATER.
  - THE BOTTOM OF BOTH LAGOONS SHALL BE POSITIVELY SEALED TO PREVENT SEEPAGE FROM THE LAGOON INTO THE ROCK FORMATION BELOW.



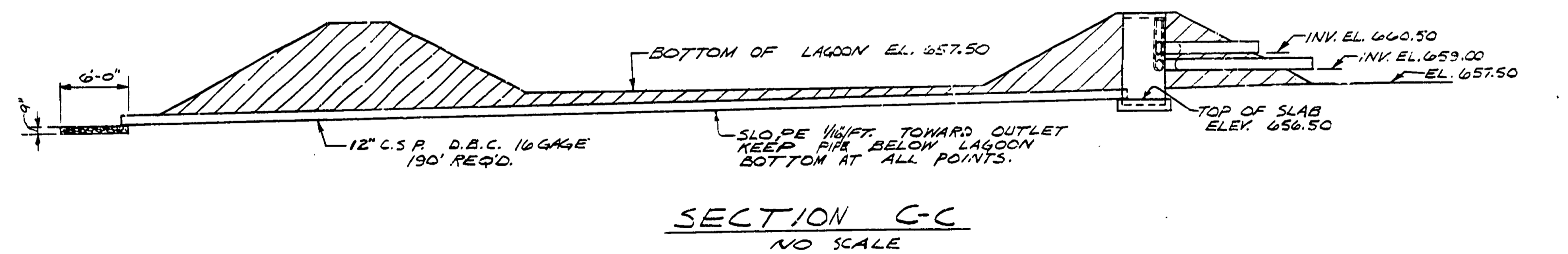
SECTION E-E NO SCALE



SECTION D-D NO SCALE



SECTION C-C NO SCALE



**NOTE:**  
THIS SHEET PROVIDED TO CONTRACTOR FOR REFERENCE ONLY. ALL WORK ON THIS SHEET BY OTHERS

SURVEYED BY		DRAWN BY B. BOYCE		5-71		NO. DATE BY		REVISIONS		NO. DATE BY		REVISIONS		MICHIGAN DEPARTMENT OF NATURAL RESOURCES		LAGOON PLAN AND DETAILS SHEET TITLE		FORCLIFFE MTN. STATE PARK AREA OR PARK		PROJECT NO. 24-1133		SHEET 4 OF 4		PLAN NO. E-127	
DESIGNED BY R. HAEUSLER		5-71		CHECKED BY		DATE		1.		3.		4.						UNION BAY CAMPGROUND							