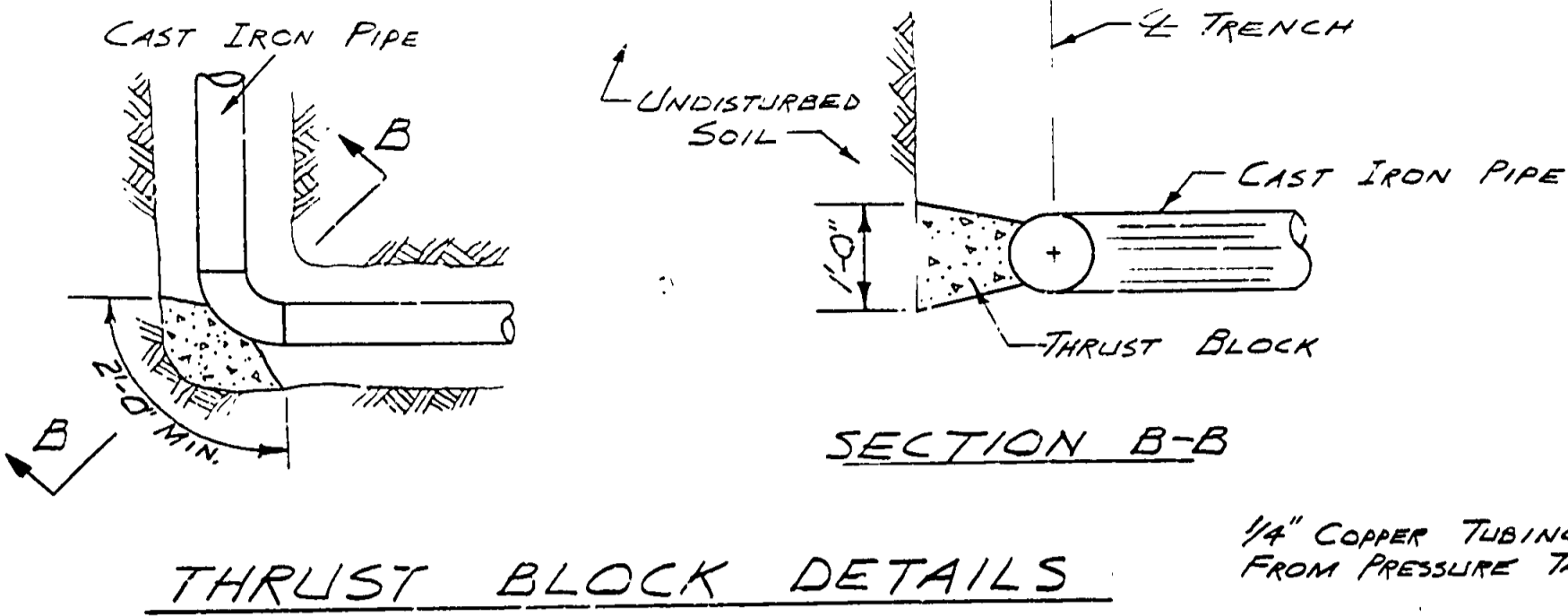
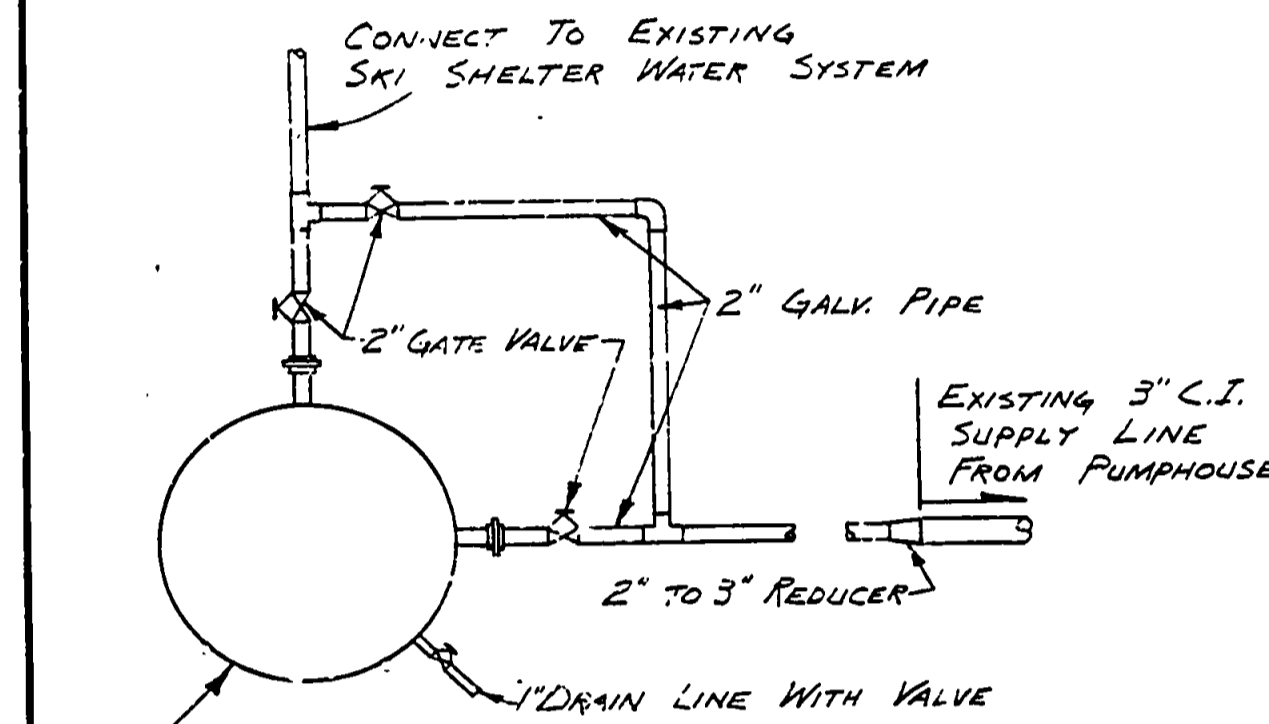


NOTES

1. P.O.B. CONCRETE THRUST BLOCK TO BE ON UNDISTURBED SOIL
2. PLACE THRUST BLOCKS AT ALL ALIGNMENT CHANGES WHERE INDICATED BY SHADED SQUARE (■)
3. BLOCKS TO BE A MINIMUM OF 2 CUBIC FEET AND 3000 PSI, 28 DAY STRENGTH CONCRETE.



THRUST BLOCK DETAILS

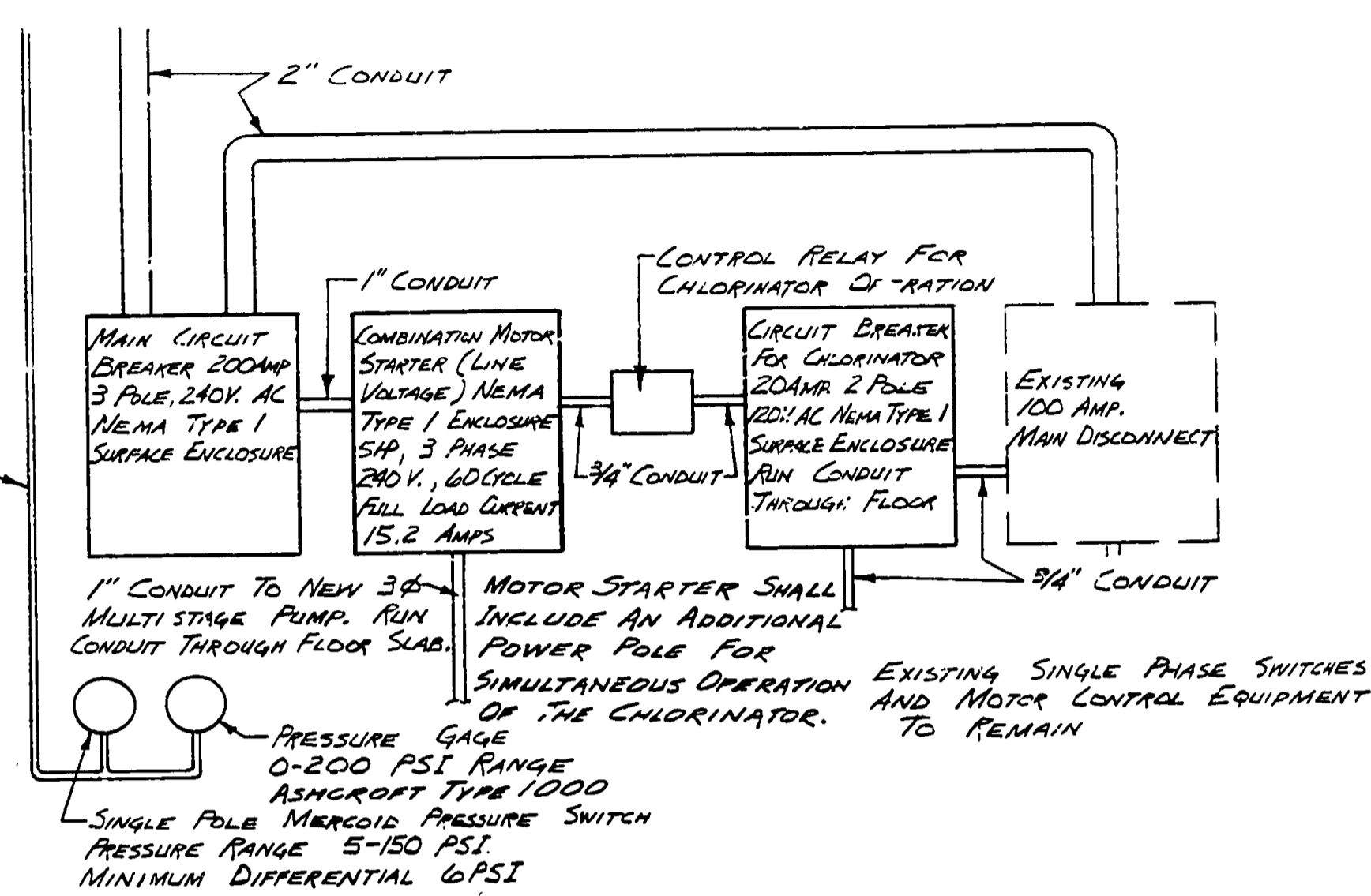


PROPOSED NEW GALVANIZED VERTICAL 120 GALLON HYDRO-PNEUMATIC STORAGE TANK WITH PROVISION FOR PRECHARGING

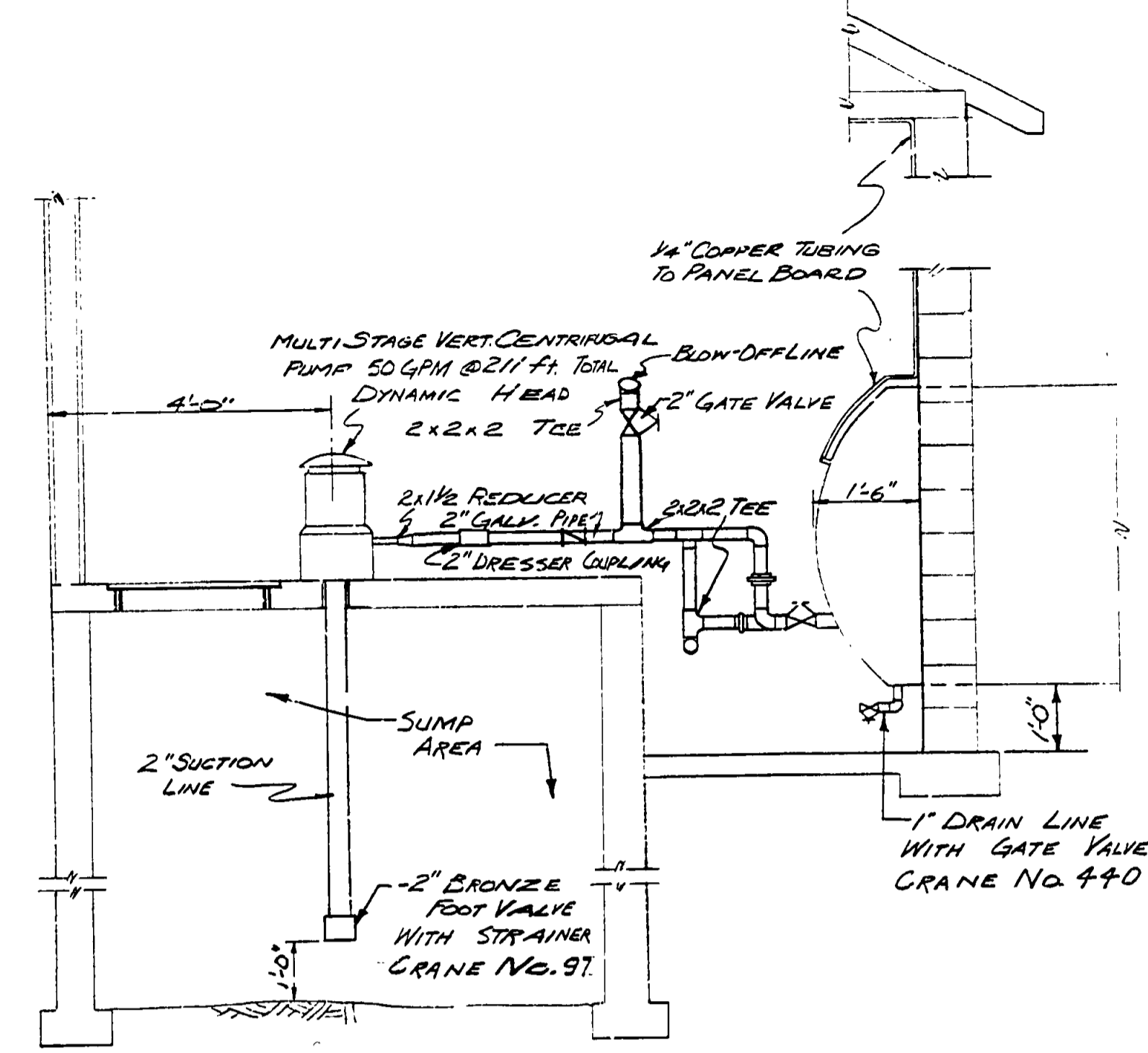
SKI SHELTER TANK INSTALLATION

NOTES

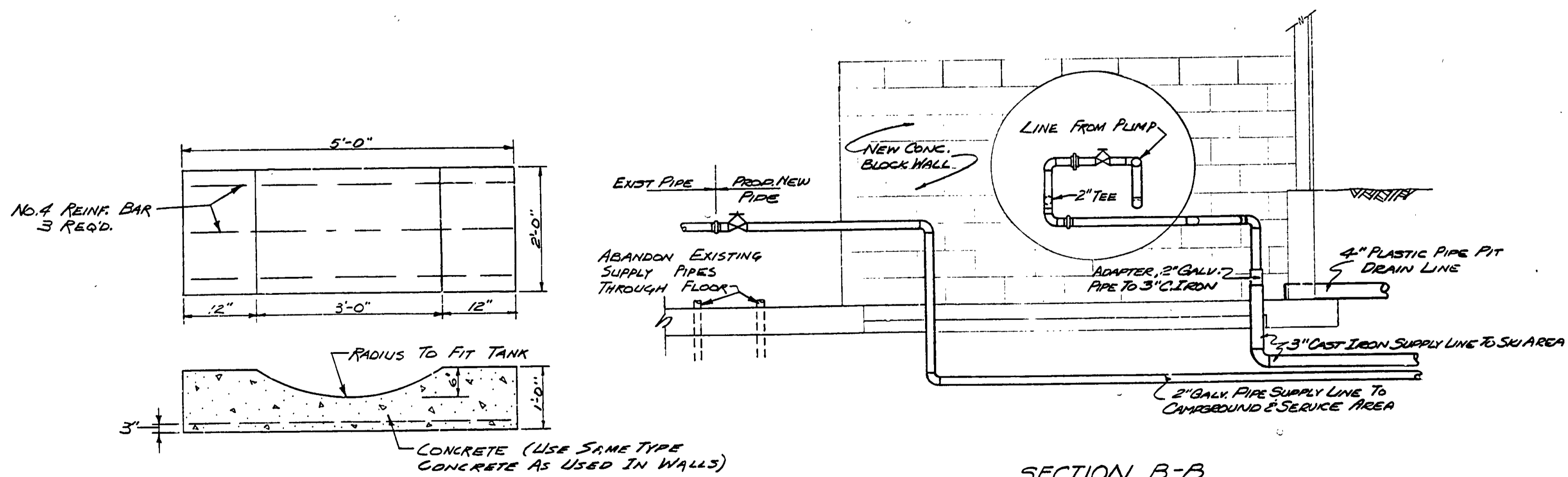
1. CONTRACTOR TO PROVIDE AND INSTALL NEW TANK INCLUDING ALL CONNECTION PIPING.
2. TANK TO BE LOCATED IN THE BOILER ROOM OF THE SKI SHELTER AND IN THE EXACT LOCATION DIRECTED BY THE ENGINEER.
3. DISCONNECT AND CAP OFF SUPPLY LINE FROM SKI HILL SPRING RESERVOIR.
4. SURPLUS PIPING & VALVES TO REMAIN STATE PROPERTY.



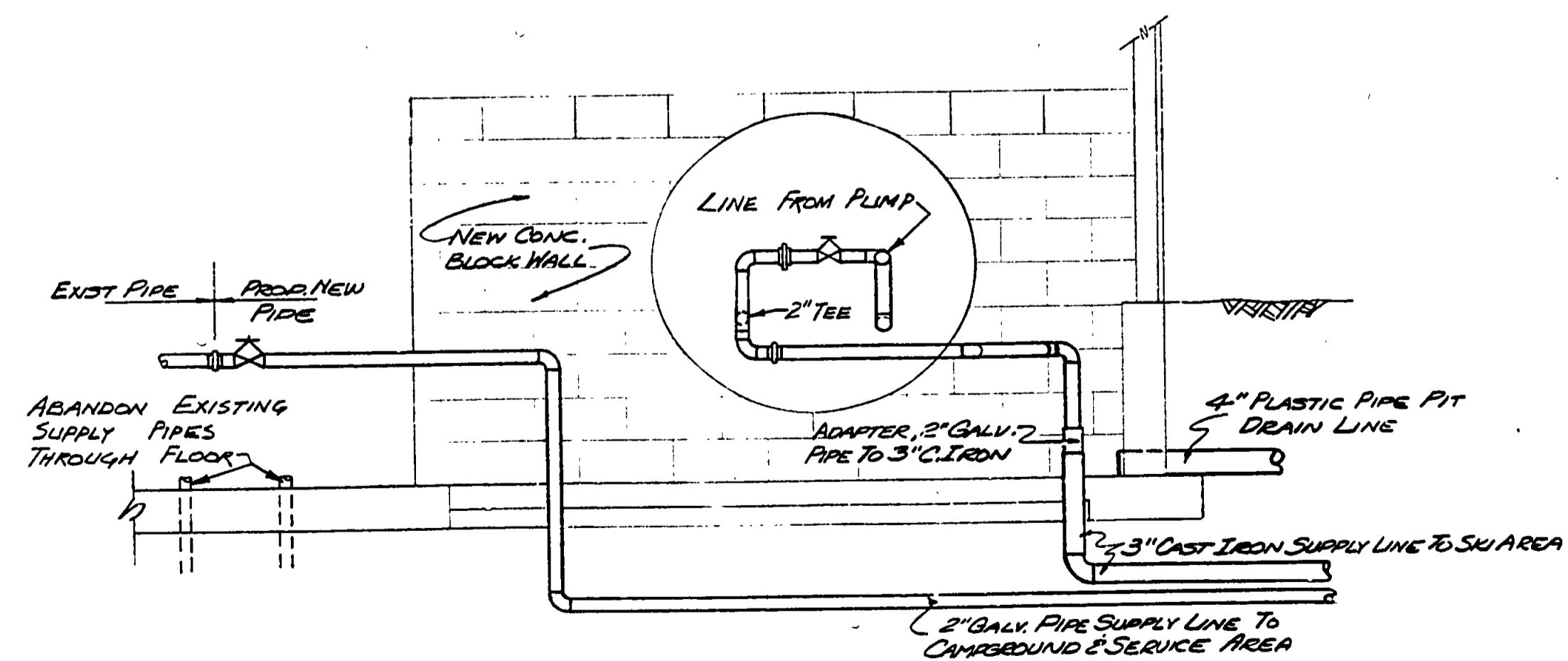
PUMPHOUSE PANELBOARD DETAIL



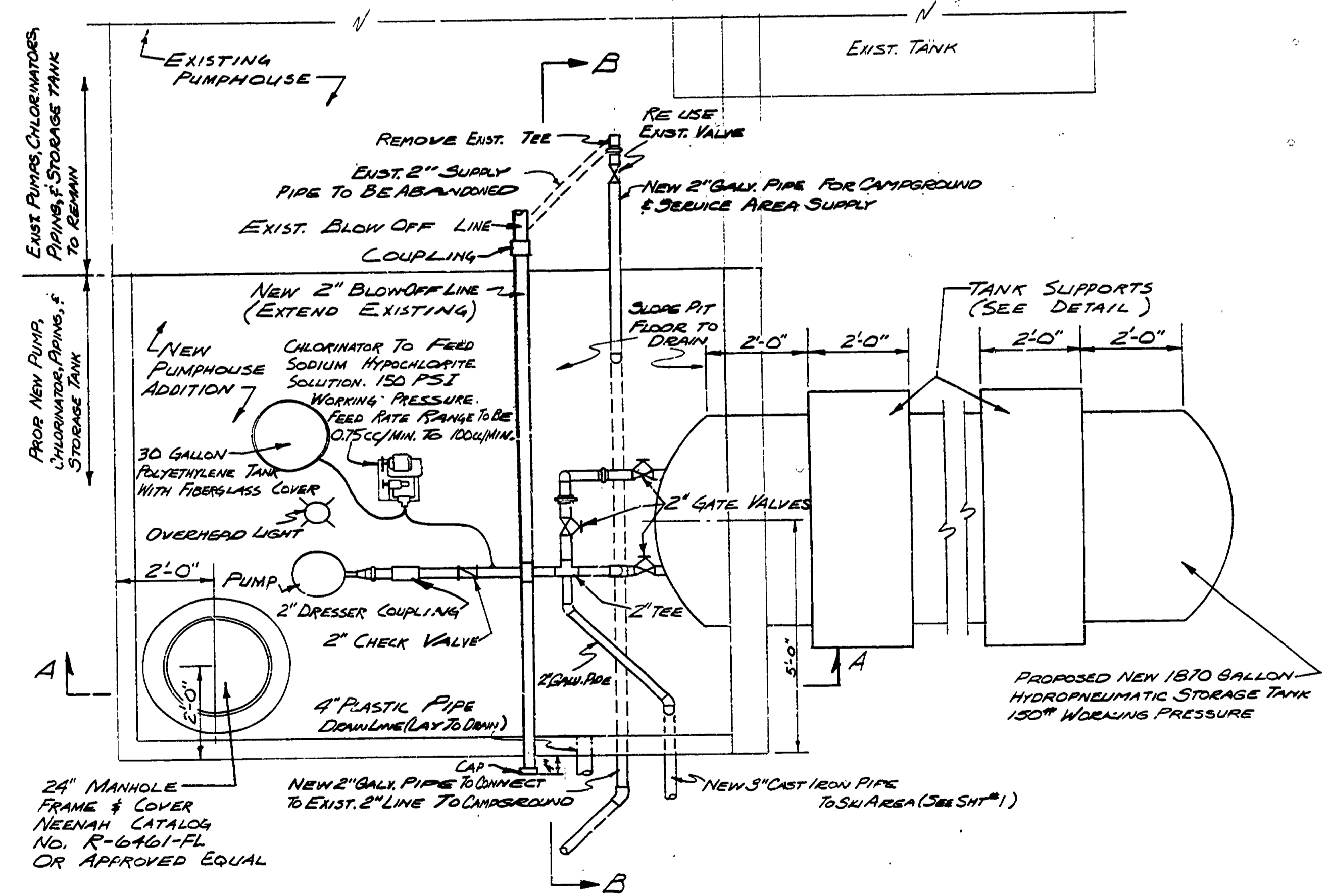
SECTION A-A
Scale: 1/2" = 1'-0"



TANK SUPPORT DETAIL
Scale: 1/2" = 1'-0"



SECTION B-B
Scale: 1/2" = 1'-0"



PLAN OF PUMPHOUSE
Scale: 1/2" = 1'-0"

SURVEYED BY		DRAWN BY C. E. MASSEY		5-71	NO.	DATE	BY	REVISIONS	NO.	DATE	BY	REVISIONS	MICHIGAN DEPARTMENT OF NATURAL RESOURCES		MECHANICAL/ELECTRICAL DETAILS		PORCUPINE MTN. STATE PARK AREA OR PARK		PROJECT NO. 24-1082	
DESIGNED BY R. HAEUSLER		5-71		CHECKED BY	1.	DATE	2.		3.				SHEET 3 OF 3		PLAN NO. E-128		PROJECT WATER SYSTEM ALTERATIONS			