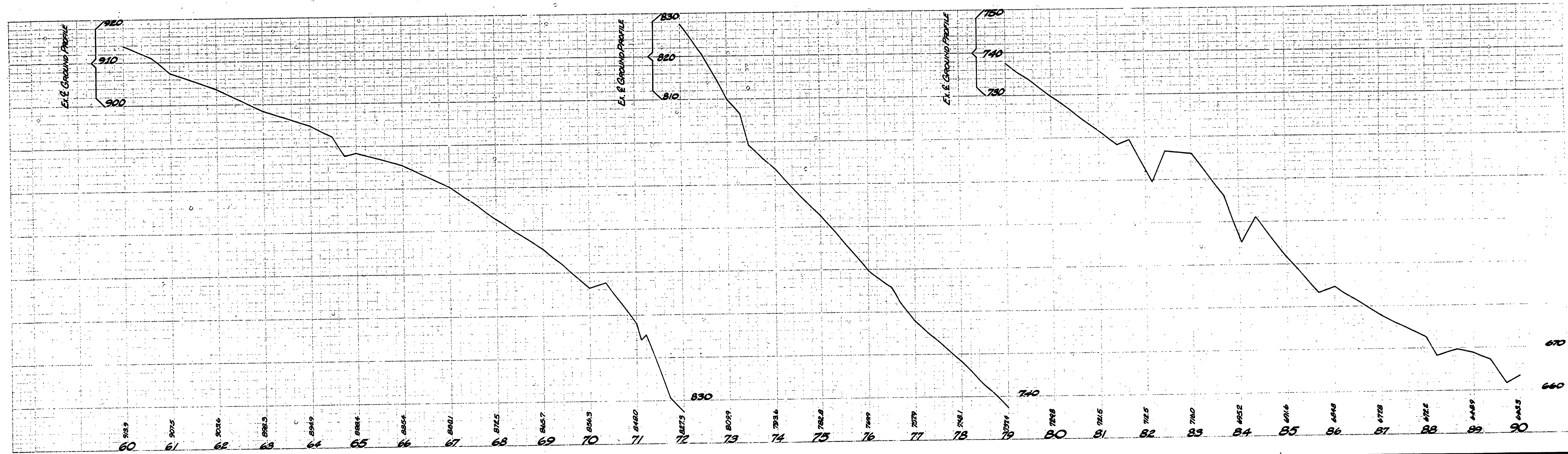
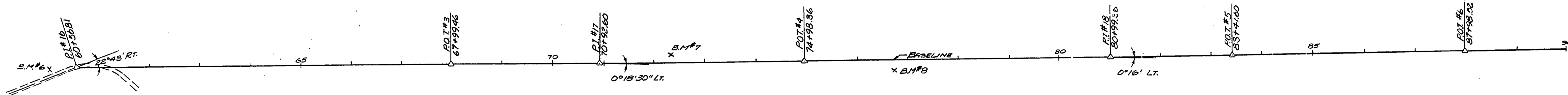
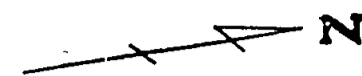


B.M.#6 ELEV. 915.90  
P.K. NAIL IN S.E. ROOT OF  
A 5" SUGAR MAPLE, 16' LT.  
OF STA. 60+08

B.M.#7 ELEV. 823.93  
P.K. NAIL IN S.E. ROOT OF  
A 6" SUGAR MAPLE, 18' LT.  
OF STA. 72+37

B.M.#8 ELEV. 762.51  
P.K. NAIL IN W. ROOT OF  
A 5" SUGAR MAPLE, 22' RT.  
OF STA. 76+72



SURVEYED BY <i>D. BISSELL</i>	10-4-70	DRAWN BY <i>C.E. MASSEY</i>	11-70	REVISIONS				REVISIONS				MICHIGAN DEPARTMENT OF CONSERVATION	PLAN AND PROFILE UNION SPRING SUPPLY LINE	SHEET NO. <u>      </u> OF <u>      </u>		PORCUPINE MOUNTAINS S.P.
				NO.	DATE	BY	NO.	DATE	BY	FOR PROJECT NO. <u>      </u>	SHEET <u>3</u> OF <u>4</u>			PLAN NO. E-129		
DESIGNED BY <i>R. MAEUSLER</i>	11-70	CHECKED BY	DATE	1.			3.			4.						