

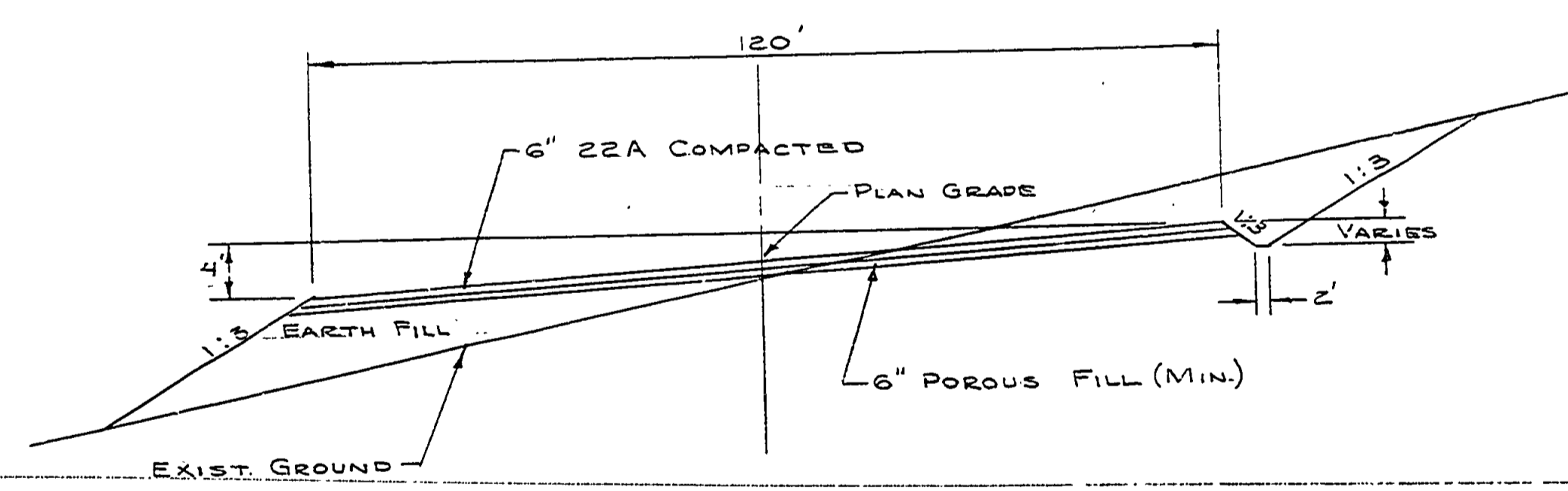
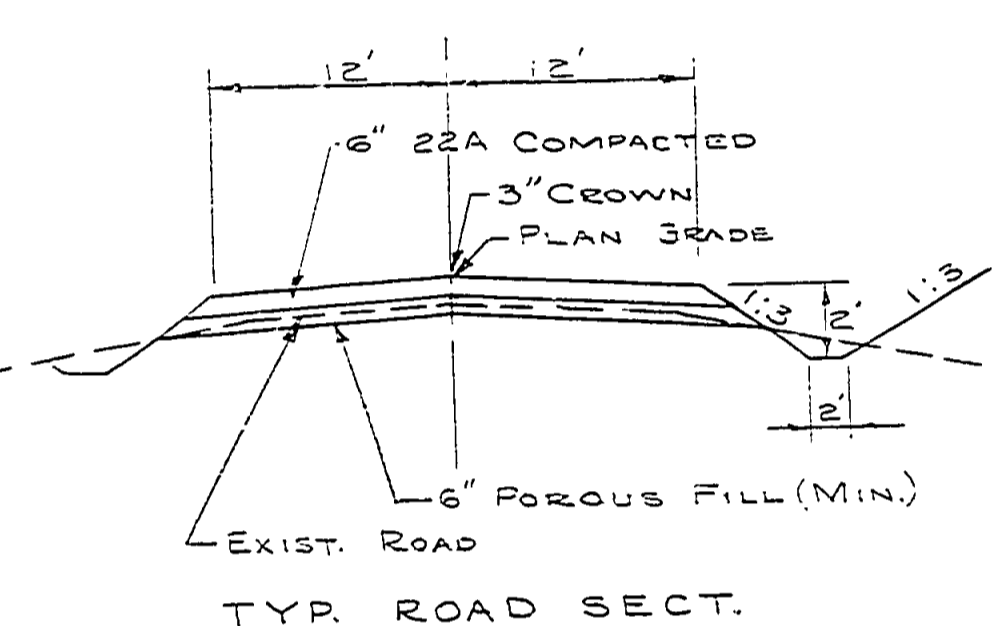
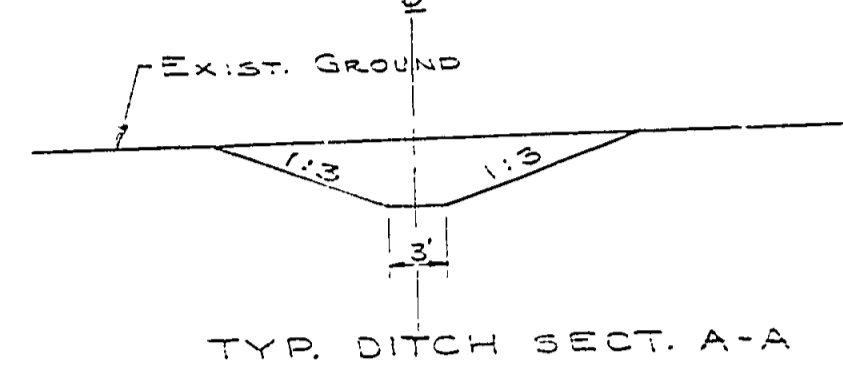
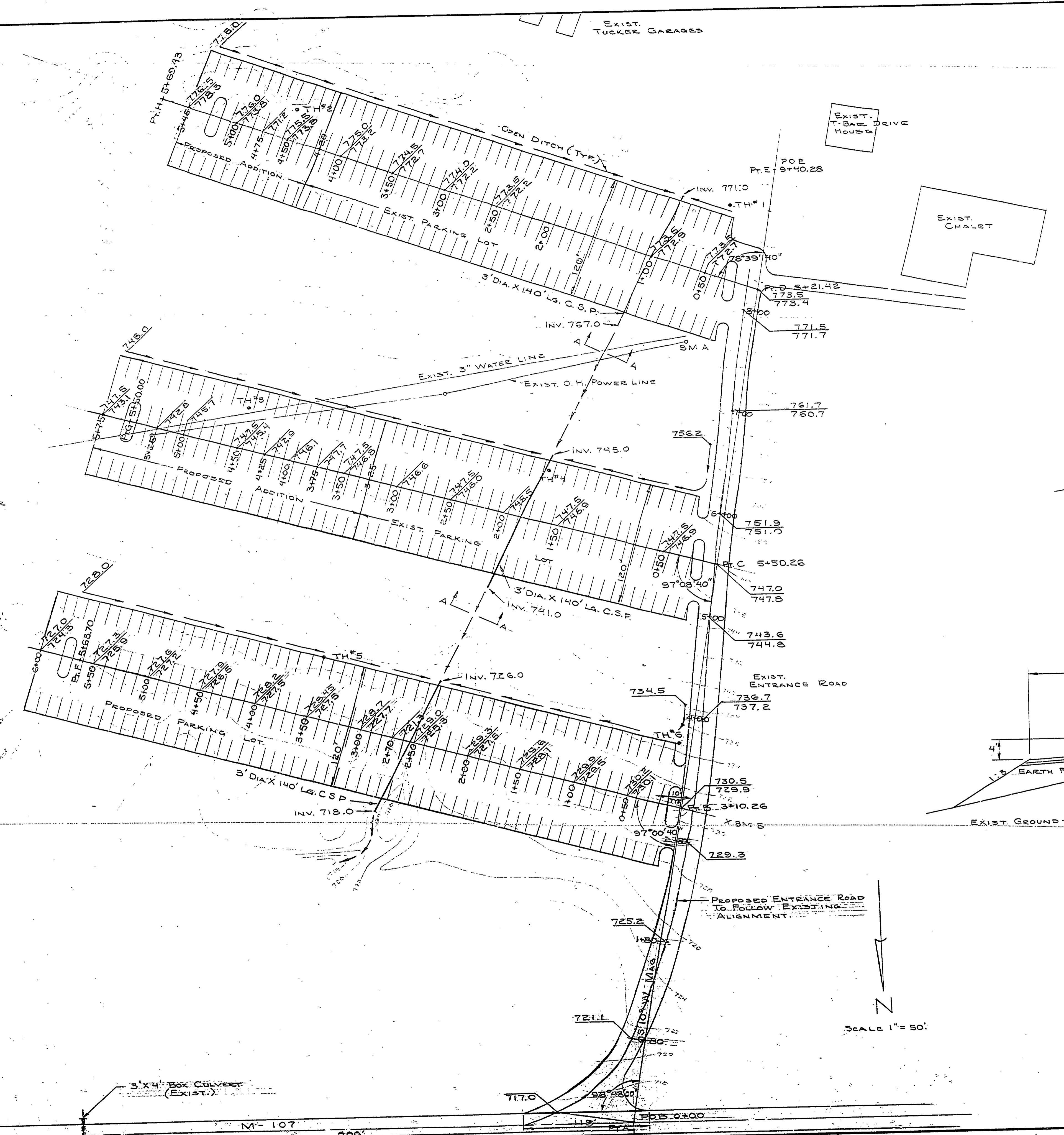
**WITNESSES**

Pt. A 0+00 PK NAIL IN CENTER M-107  
 10" Y. BIRCH S 80°W 38.59'  
 3" MAPLE N 33°W 44.81'  
 PARK PROP. SIGN - NO HUNTING S 57°E 84.82'  
 Pt. B 5+02.25 10" SPIKE  
 1" HAVLICK S 32°E 27.27'  
 1" SUGAR MAPLE N 72°W 44.46'  
 3" Y. BIRCH S 80°W 38.93'  
 Pt. C 5+50.26 PK NAIL  
 Pt. D 8+21.42 PK NAIL  
 Pt. E 9+40.28 PK NAIL  
 1" W. BIRCH S 80°W 49.98'  
 3" SPRUCE S 94°W 72.24'  
 8" COR. T-BAR HOUSE S 64°W 52.8'  
 Pt. F 5+63.70 1" X 24" IRON PIPE B-B-F  
 8" BASSWOOD N 26°E 24.40'  
 8" BASSWOOD N 50°W 8.01'  
 Pt. G 5+50.00 1" X 24" IRON PIPE B-C-G  
 1" POWER POLE N 60°W 23.45'  
 1" SUGAR MAPLE S 60°W 4.97'  
 8" BASSWOOD N 22°E 15.8'  
 Pt. H 5+62.43 1" X 24" IRON PIPE B-D-H  
 8" SUGAR MAPLE S 16°W 8.00'  
 7" SUGAR MAPLE S 68°E 3.85'  
 8" BASSWOOD N 45°W 14.24'  
 POT 0+40.66 1" X 24" IRON PIPE B-D-H  
 POT 0+53.42 1" X 24" IRON PIPE B-C-G

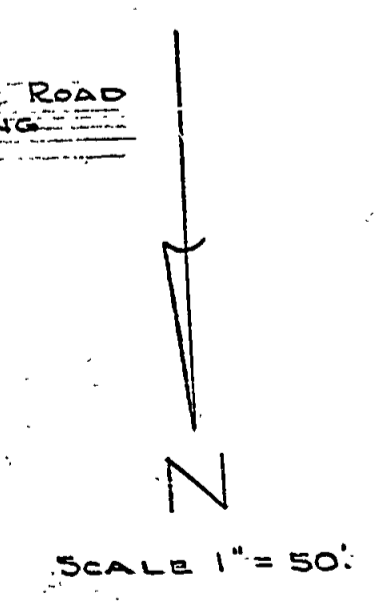
BM A ELEV. 771.63  
 HEAD OF 10" SPIKE, EAST SIDE POWER POLE.  
 TO LT. STA. 0+42 BASELINE D-H.  
 BM B ELEV. 730.94  
 PK NAIL, NUT & BM TAG IN NE ROOT OF 12" SUGAR  
 MAPLE, 45' RT. STA. 3+01 BASELINE A-E.

- TH#1 70' RT. STA. 0+50 B-D-H  
 0'-2" LOAMY SAND & SILT, SOME PEBBLES  
 2'-5" PLASTIC TO FIRM CLAY, SOME STONES
- TH#2 80' RT. STA. 4+50 B-D-H  
 0'-4" PLASTIC CLAY, SOME COBBLES  
 4'-6" FIRM CLAY, EMBEDDED BOULDER AT 5'
- TH#3 40' RT. STA. 4+50. B-C-G  
 0'-5" PLASTIC TO FIRM CLAY, SOME COBBLES
- TH#4 50' RT. STA. 1+70 B-C-G  
 0'-2" VERY SANDY CLAY LOAM.  
 8'-5" PLASTIC TO FIRM CLAY, SOME COBBLES
- TH#5 60' RT. STA. 3+50 B-B-F  
 0'-5" PLASTIC TO FIRM CLAY.
- TH#6 60' RT. STA. 0+20 B-B-F  
 0'-5" PLASTIC TO FIRM CLAY, SOME COBBLES

NOTE: CONTRACTOR SHALL MAINTAIN TRAFFIC TO BUILDINGS SHOWN ON PLANS DURING ALL PHASES OF CONSTRUCTION. COST OF TRAFFIC MAINTENANCE SHALL BE INCIDENTAL TO TOTAL PROJECT.  
 CONTRACTOR SHALL NOTIFY ALL UTILITY COMPANIES CONCERNED ONE WEEK BEFORE STARTING CONSTRUCTION.



PROPOSED ELEV.  
 EXIST. ELEV.



BUILDING COMMITTEE APPROVAL	
BY: CHAIRMAN	DATE
RECOMMENDED FOR APPROVAL	
ENGINEERING OR ARCHITECTURAL SUPERVISOR	DATE
RECOMMENDED FOR APPROVAL	
PROGRAM AND PLAN COORDINATOR	DATE
DIVISION / REGION APPROVAL	
BY: DIVISION CHIEF/REGIONAL MANAGER	DATE
ENGINEERING DIVISION	
APPROVED: CHIEF ENGINEER	DATE
PORCUPINE MOUNTAINS STATE PARK	
PROJECT NO. 24-1455	
SHEET 2 OF 2 PLAN NO. E-131	

SURVEYED BY		DRAWN BY J. YPMA		G.T.A. NO. DATE BY		REVISIONS		NO. DATE BY		REVISIONS		MICHIGAN DEPARTMENT OF NATURAL RESOURCES		LAYOUT AND GRADES SHEET TITLE		PROJECT	
DESIGNED BY R.H. MERRILL	DATE	CHECKED BY	DATE	1.		2.		3.		4.							