

NOTE: Existing Septic Tank, Dosing Chamber, Distribution Box And Drainfield To Be Excavated And Disposed Of Off Site. Area To Be Graded As Directed By The Engineer.

Cut and remove approximately 80' of existing bituminous pavement. Backfill trench with excavated material in order to maintain road base continuity. Repair bituminous pavement to match existing surface. See SEWER CROSSING DETAIL. This Sheet.

NOTE: 20' Maximum Clearing Limits Along Gravity Sewer Alignment.

Plan Scale: 1"=100'

WITNESSES TO SURVEY POINTS

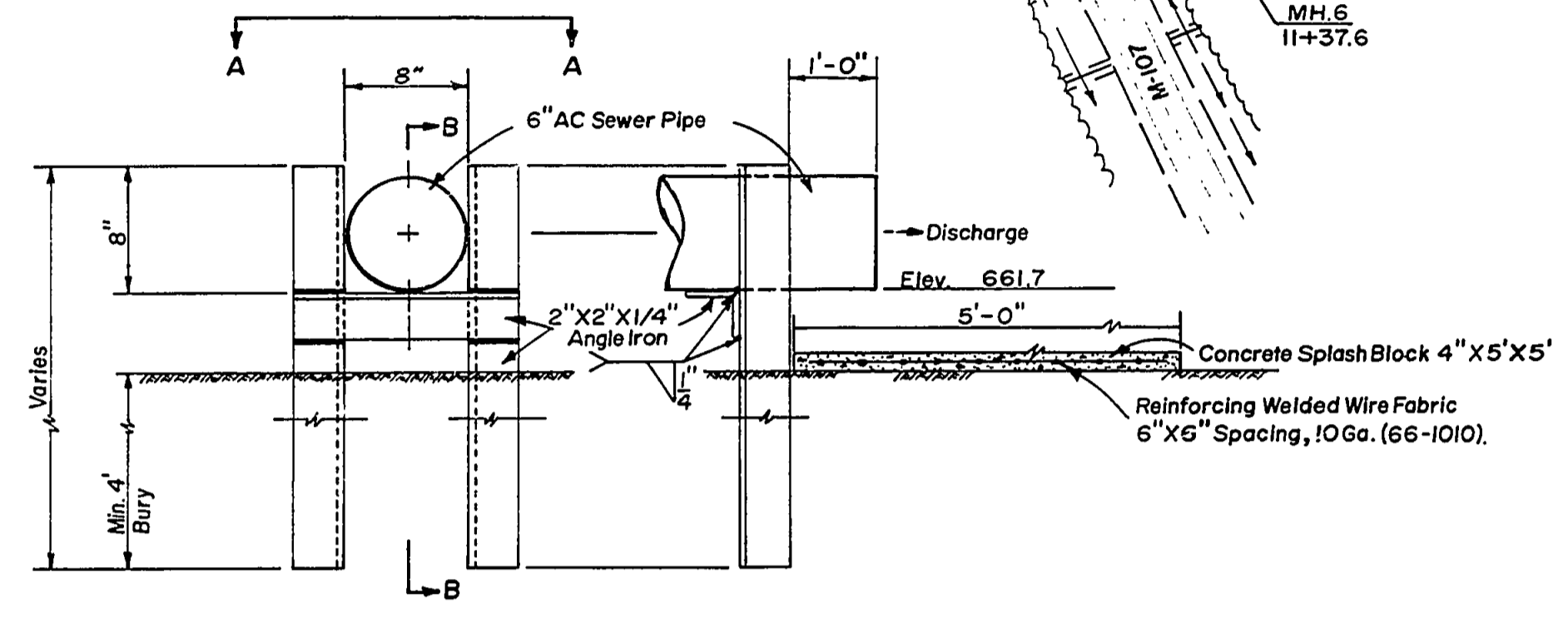
Pt. 1	0+00.00
A Chisled "X" In Center Of N Septic Tank M.H. Cover At Chislet	
Pt. 2	1+39.03
N32°W, 25.69', Spike In 3"-7" Triple Yellow Birch	
N59°E, 60.55', Spike In 7" White Birch Under Power Line	
Pt. 3	7+21.29
N24°W, 14.45', Spike In 9" Maple	
S79°W, 12.12', Spike In 6" Maple	
Pt. 4	11+39.88
N50°W, 7.38', Spike In 20" Dead Hemlock	
S34°W, 6.32', Spike In 5" Yellow Birch	
N61°E, 25.49', Spike In 8" White Birch	
Pt. 5	17+22.73
N29°W, 33.83' Bench Mark "C"	
S51°E, 17.06', Spike In 20" Aspen	
N74°W, 20.33', Spike In 9" Aspen	
Pt. 6	18+22.97
S37°W, 10.71', Spike In 7" Girdled White Birch, S Side Of Trail	
N66°W, 8.80', Spike In 3"-6" Quod Birch, N Side Of Trail	
N00°E, 6.08', Spike In 7" Aspen	
Pt. 7	22+61.21
N24°E, 9.89', Spike In 15" White Birch	
N62°W, 11.62', Spike In 6" Forked Ash	
S06°W, 13.89', Spike In 4" Ash, S Side Of Trail	
Pt. 8	26+49.40
S47°E, 18.07', Spike In 7" White Birch, S Side Of Trail	
S20°W, 15.37', Spike In 8" Ash	
N53°W, 9.63', Spike In 7" Ash, N Side Of Trail	
Pt. 9	28+45.84
N86°W, 99.45' Bench Mark Lagoon	
S30°E, 39.29', Spike In 8" White Birch	
S80°E, 5.20', 12th. Post W Of E Fence Corner	

BENCH MARKS

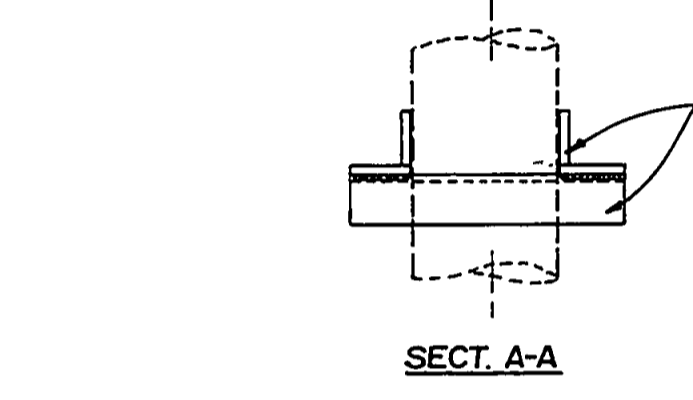
BM-A	Elev. 771.63
IO Spike In Power Pole, 63' Lt. Of Sta. 1+58	
BM-B	Elev. 730.94
Pk. Nut & Tag In 10" Sugar Maple, 14' Lt. Of Sta. 6+15	
TBM	Elev. 718.88
Top Of 6th. Steel Post West Of East End Of Guardrail 108' Lt. Of Sta. 9+12	
BM-C	Elev. 672.33
Pk. Nut & Tag In South Root Of 6" Birch, 31' Lt. Sta. 19+10	
(See Witness To Pt. 5)	
BM-Lagoon	Elev. 664.40
Head Of 10" Spike In 13" Cedar, 77' Lt. Sta. 28+22	

LOG OF SOIL BORINGS

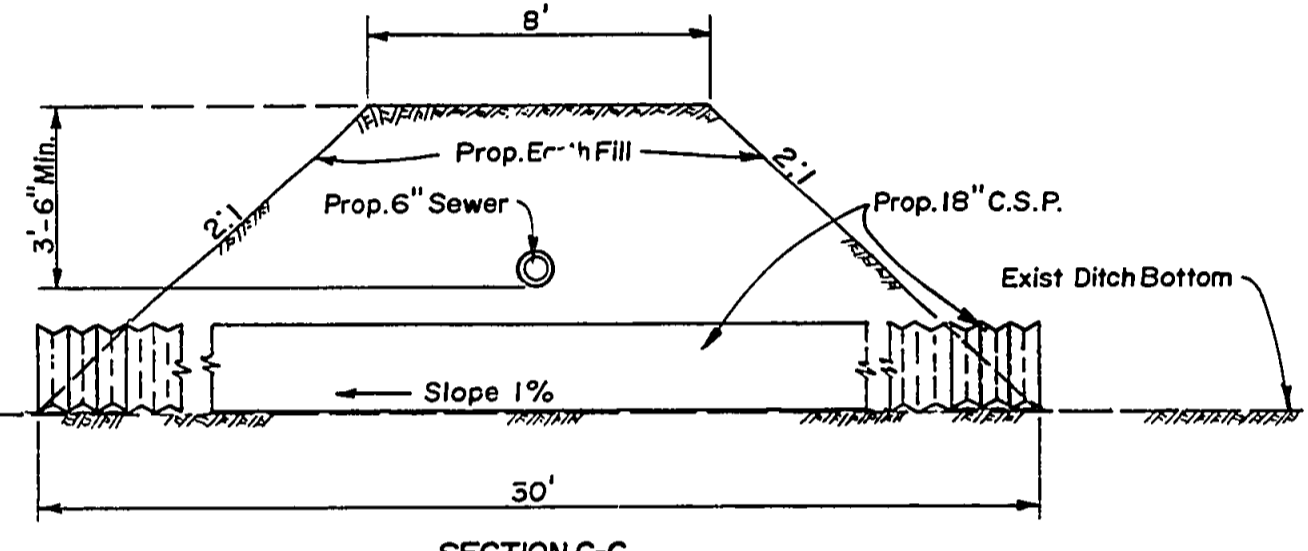
TH.1, Sta. 12+00, Elev. 697.8	TH.5, Sta. 19+23, Elev. 671.1
0.0' - 3.0' Sandy Silty Loam	0.0' - 2.0' Sandy Silty Loam
3.0' - 6.3' Fine Sand & Silt	2.0' - 5.9' Silty Clay Loam
6.3' End Of Boring	5.9' End Of Boring
Water Table At 4.0'	Trace Of Moisture At 4.2'
TH.2, Sta. 14+00, Elev. 688.5	TH.6, Sta. 22+61, Elev. 669.7
0.0' - 3.0' Silt, Fine Sand & Pebbles	0.0' - 2.5' Silty Clay
3.0' - 5.5' Medium To Coarse Sand	2.5' Rock, Refusal, End Of Boring
5.5' End Of Boring	
TH.3, Sta. 15+50, Elev. 682.2	TH.7, Sta. 26+49, Elev. 665.8
0.0' - 5.0' Silty Sandy Clay Loam	0.0' - 3.5' Silty Clay
5.0' Rock, Refusal, End Of Boring	3.5' Rock, Refusal, End Of Boring
TH.4, Sta. 17+22, Elev. 671.8	
0.0' - 0.8' Topsoil & Corduroy Logs	
0.8' - 5.5' Silty Clay Loam	
5.5' End Of Boring	



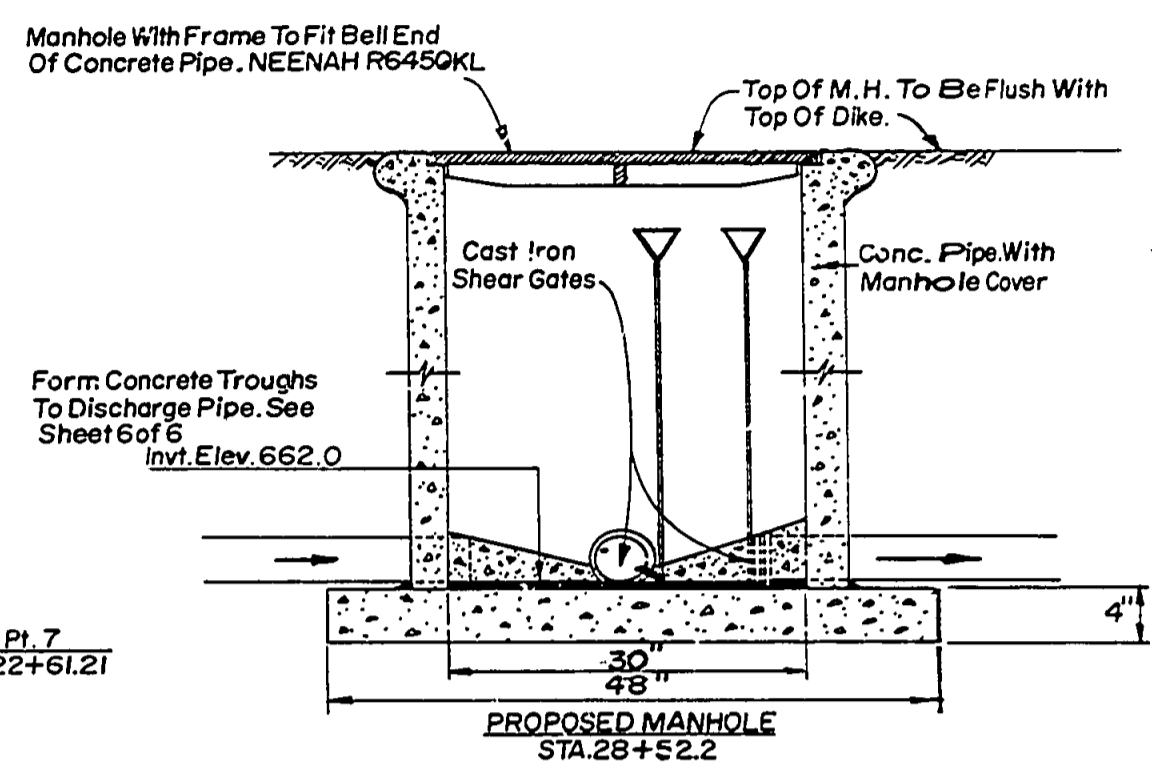
SEWER CROSSING DETAIL



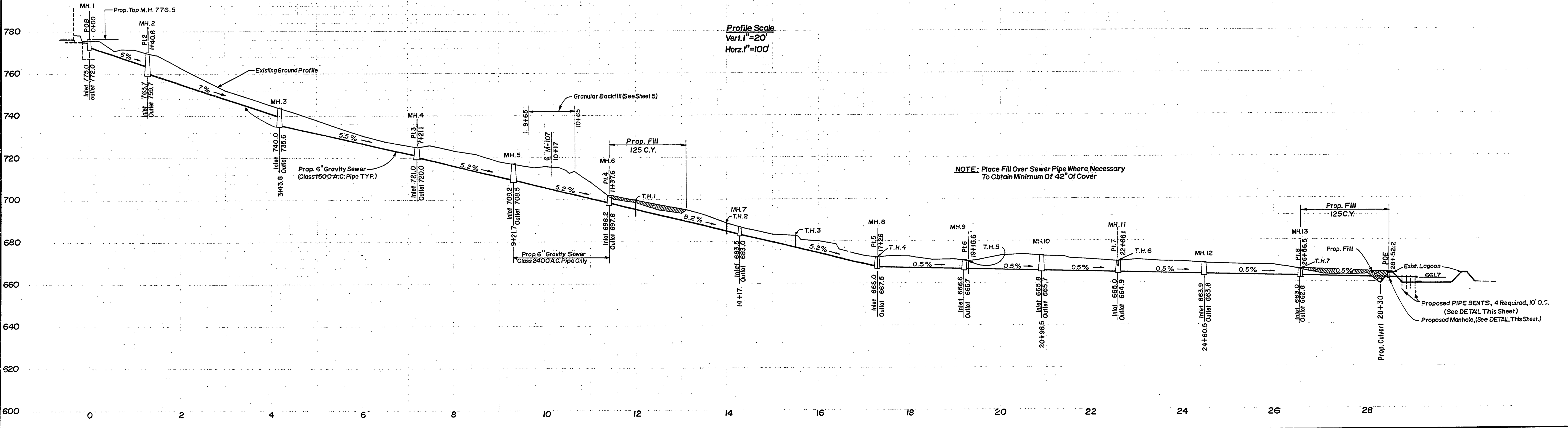
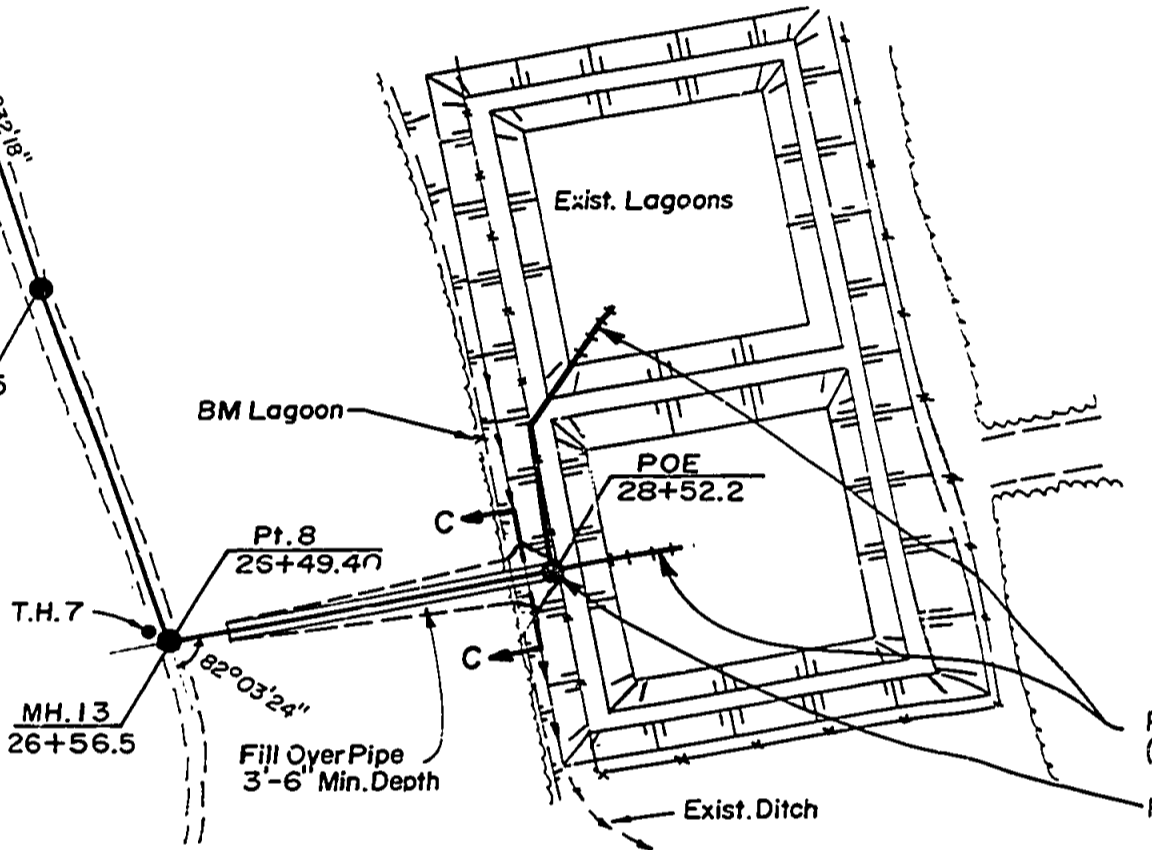
PIPE BENT DETAIL



SECTION C-C CULVERT INSTALLATION



PROPOSED MANHOLE



SURVEYED BY L. Thompson	10-75	DRAWN BY L.S.	11-75	NO.	DATE	BY	REVISIONS	NO.	DATE	BY	REVISIONS	MICHIGAN DEPARTMENT OF NATURAL RESOURCES	PROPOSED 6" SEWER	SHEET NO. 2 OF 6	Porcupine Mountains State Park	
DESIGNED BY L. Smith, H. Merrill	11-75	CHECKED BY		1.	3-78	D.B.	As Built	3.						FOR PROJECT NO. 24-1676 Sewage System Revisions	SHEET 2 OF 6	PLAN NO. E-133