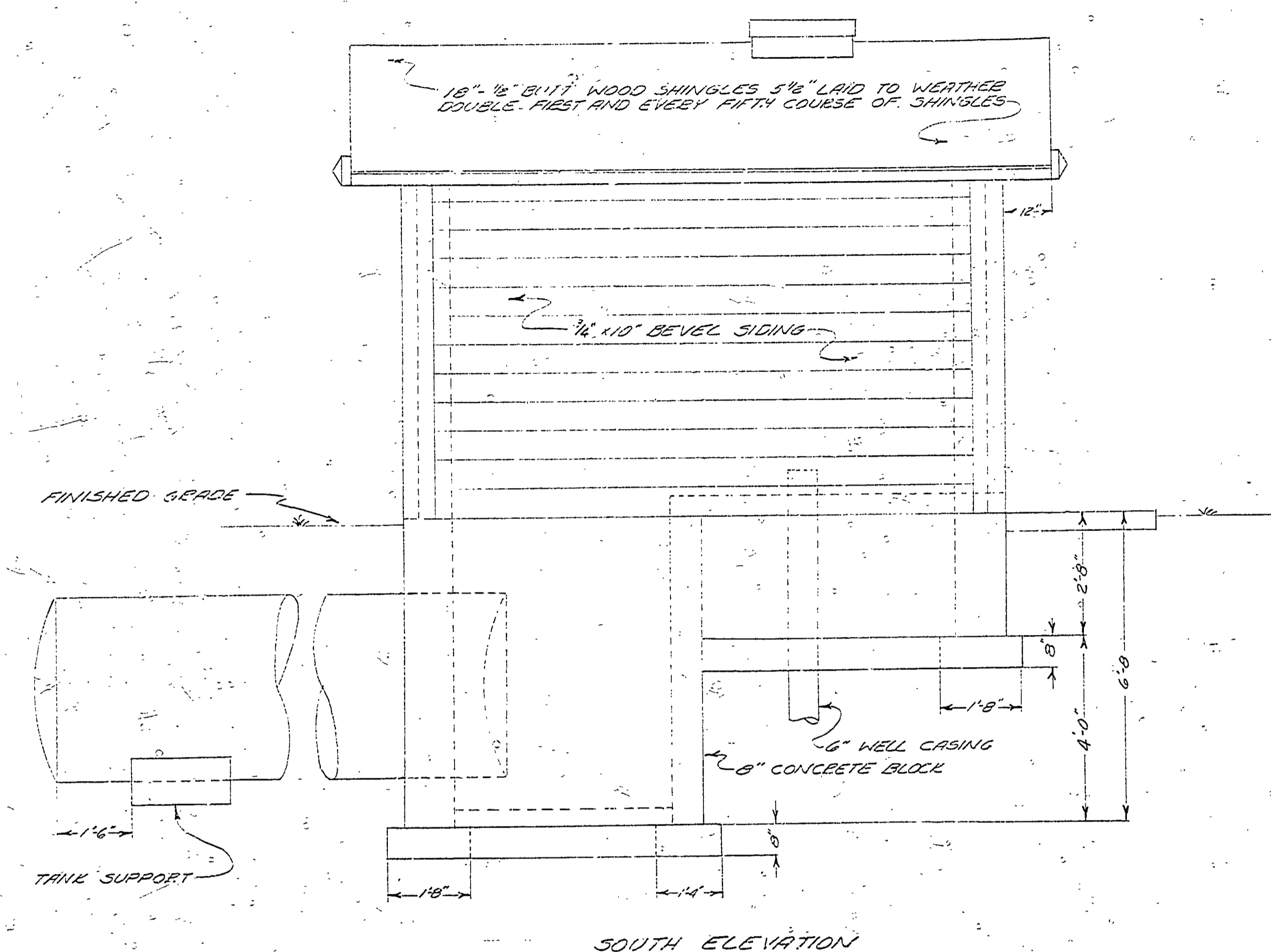
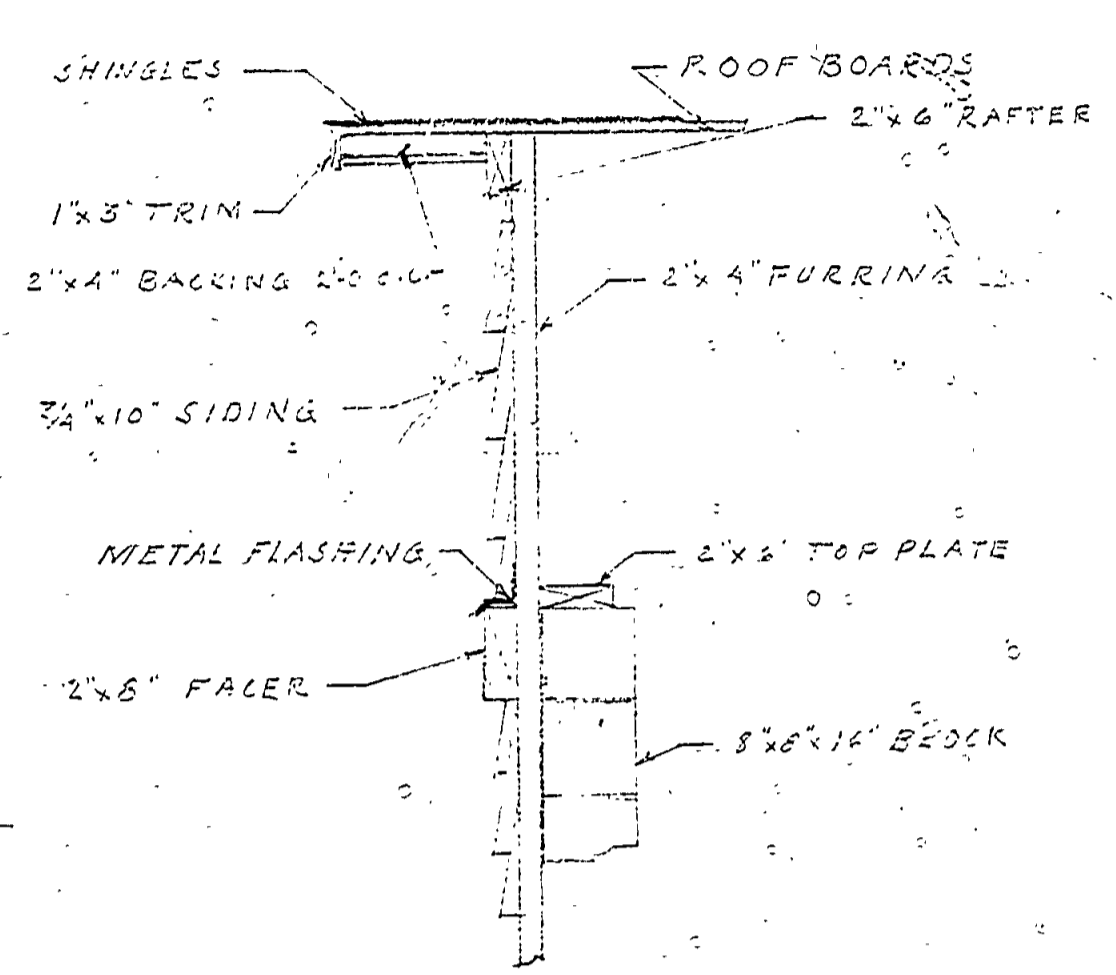


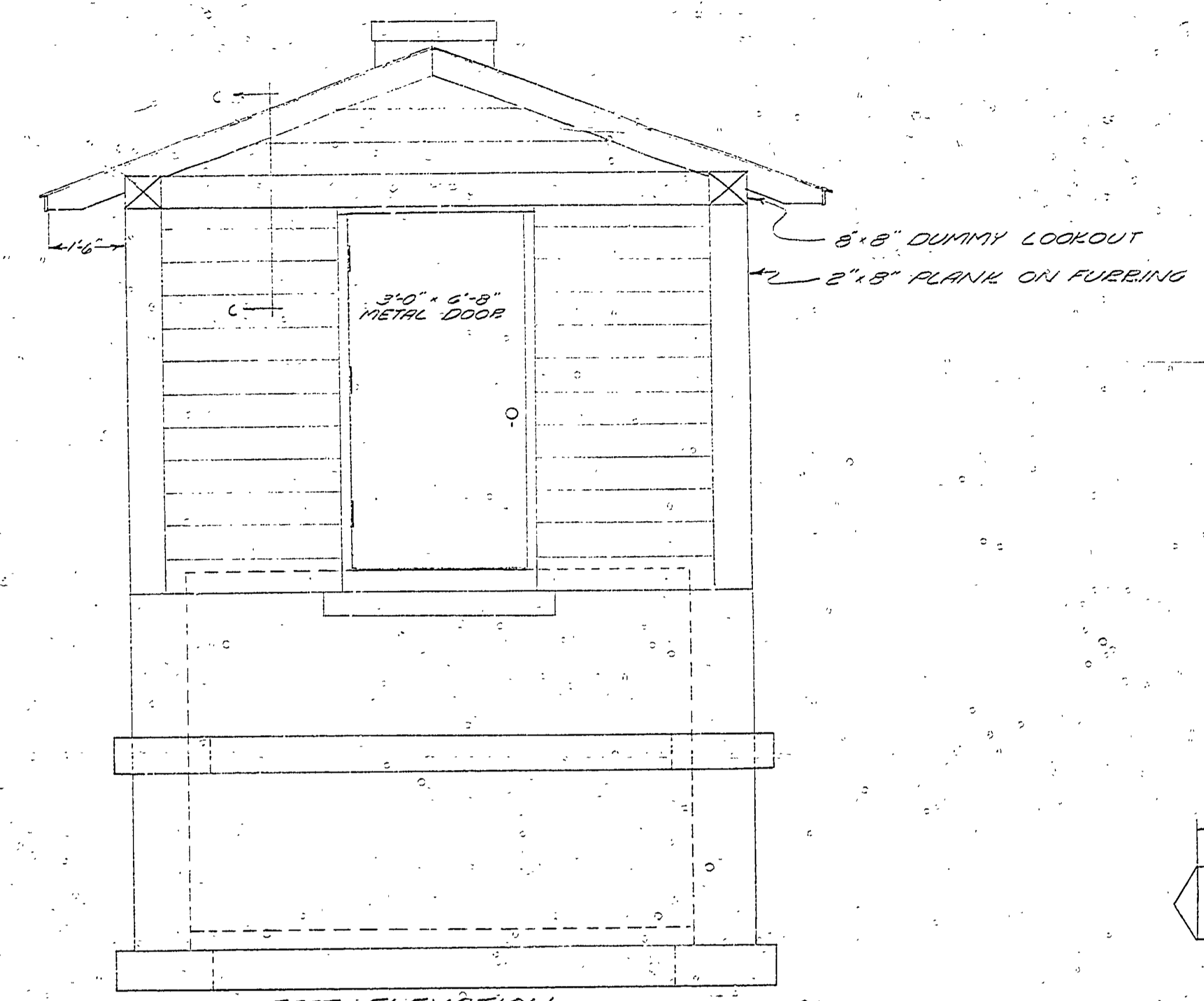
DRAWN BY C. C. BENNETT	CHECKED BY E. J. P.	DATE JAN. 28, 1937	REVIEWED BY SECTIONS	DATE	APPROVED BY	ASSISTANT CHIEF IN CHARGE OF DESIGN DATE 2/24/37	
			ARCHITECTURAL	J.P.	3-2-37		
			ENGINEERING	J.P.	3-2-37		
			LANDSCAPE	J.P.	3-2-37		
REVISIONS							
			NO.	DATE	BY		
			1				
			2				
			3				
			4				
			5				
			6				



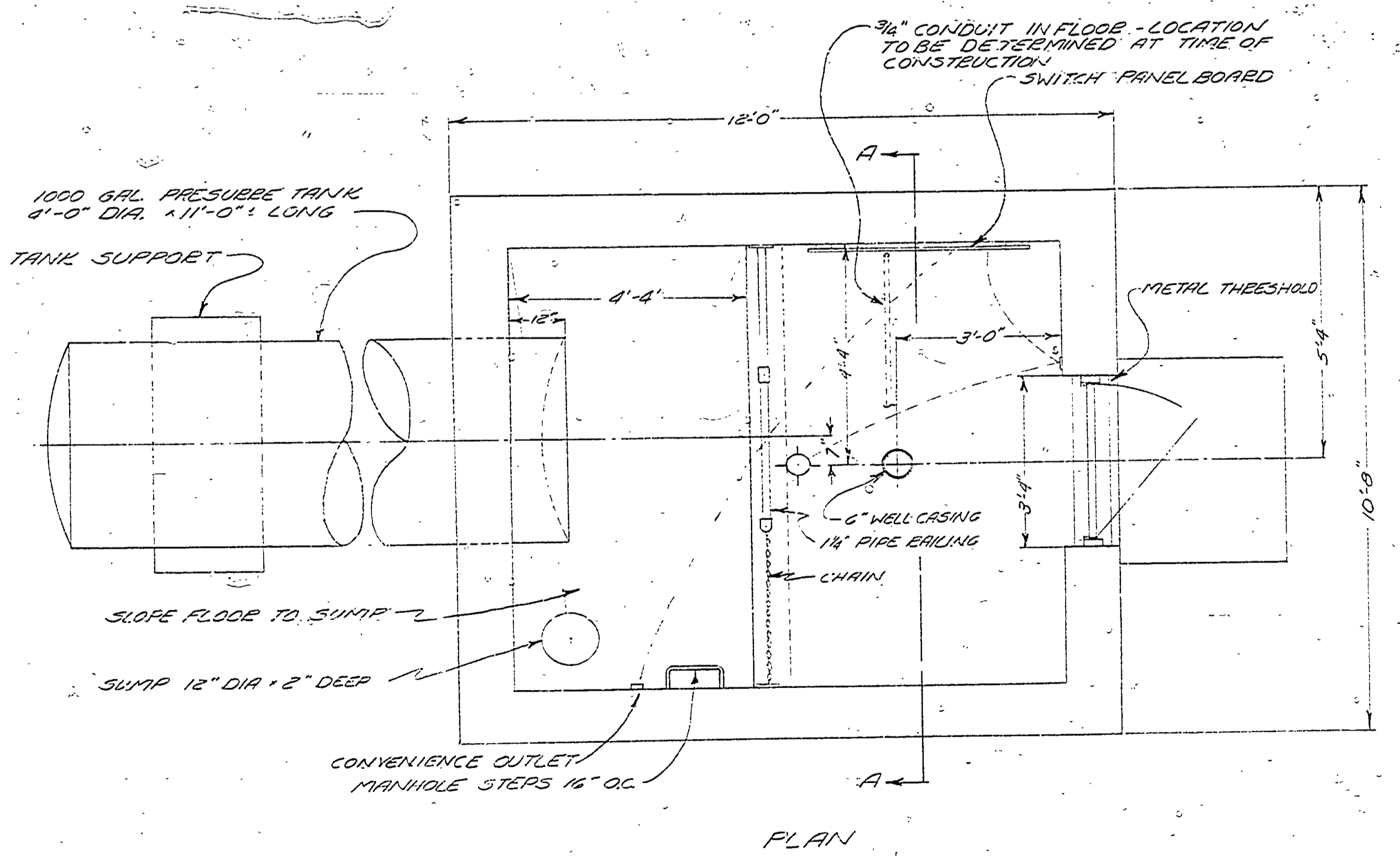
SOUTH ELEVATION



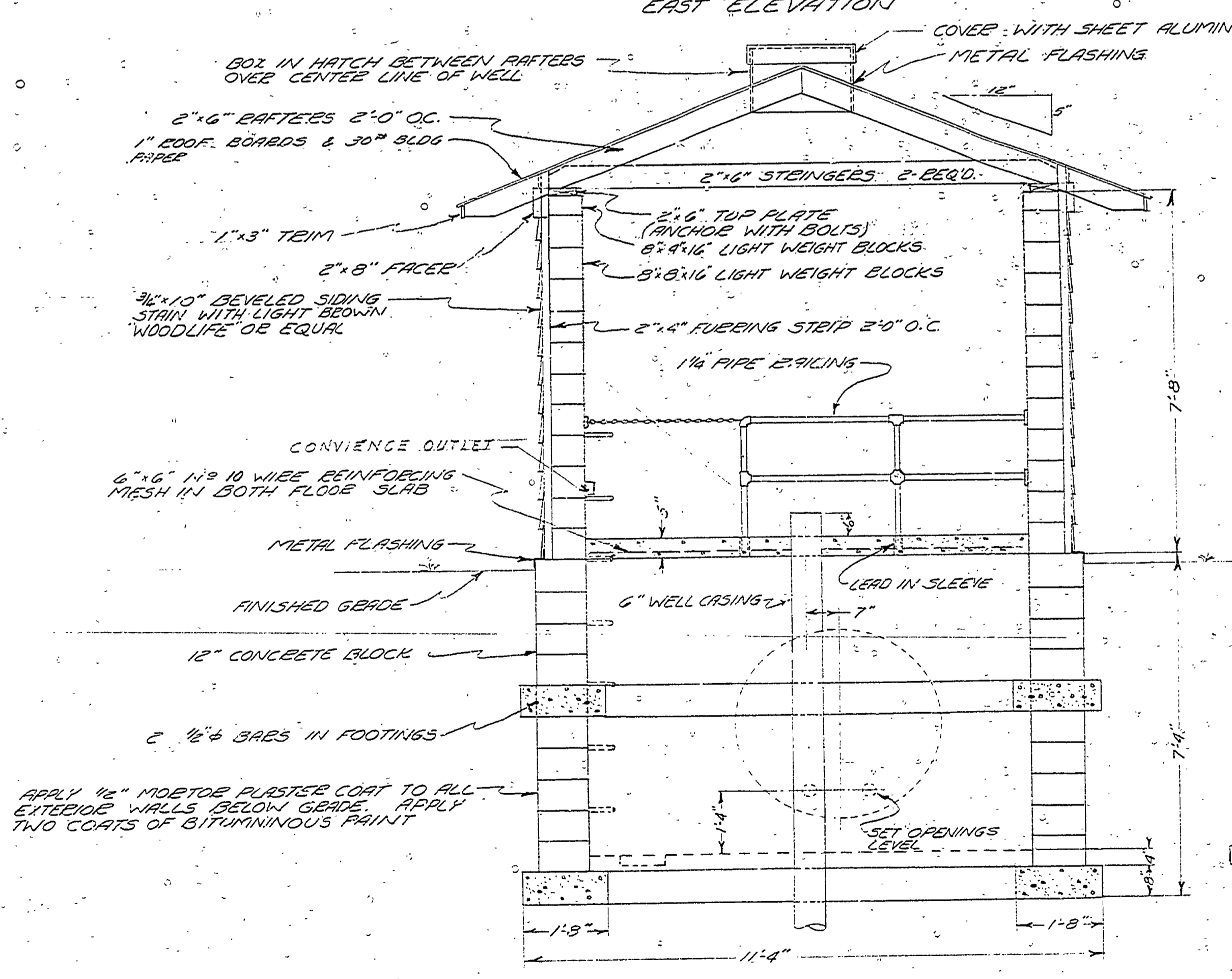
SECTION C-C
SCALE 3/4" = 1'-0"



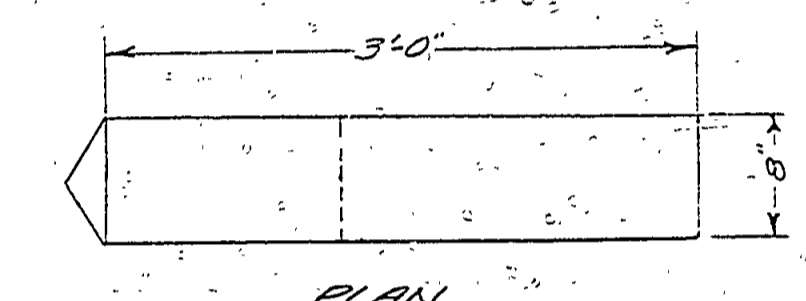
EAST ELEVATION



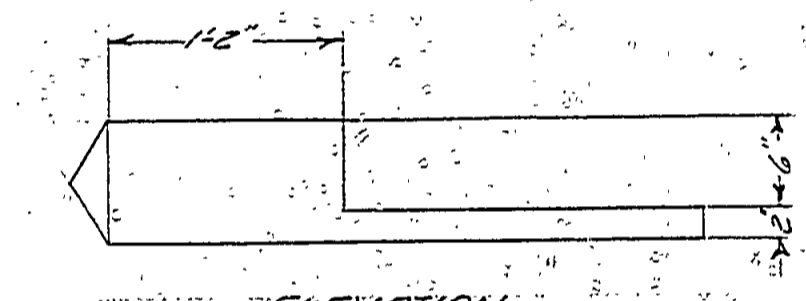
PLAN



SECTION A-A

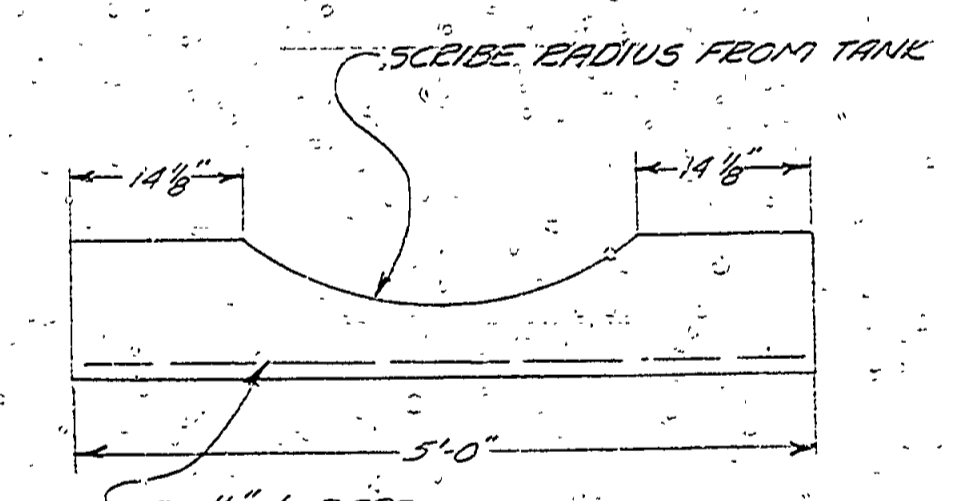


PLAN

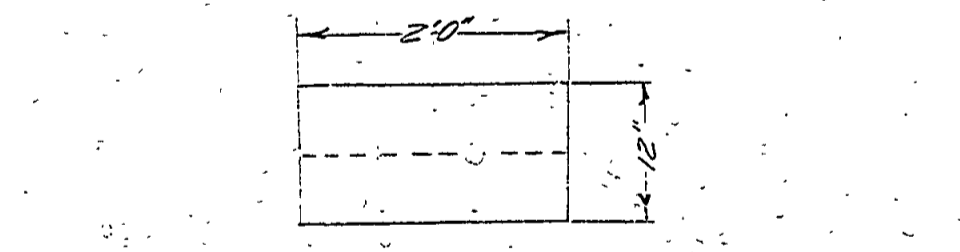


ELEVATION

DETAIL OF DUMMY LOOKOUT
SCALE 1" = 1'-0"



ELEVATION



END VIEW

DETAIL OF TANK SUPPORT
SCALE 3/4" = 1'-0"

PUMP HOUSE STRUCTURE
SCALE 1/2" = 1'-0"

MICHIGAN
DEPARTMENT OF CONSERVATION
PARKS AND RECREATION DIVISION

VAN BUREN STATE PARK
WATER SYSTEM - PUMP HOUSE

SHEET
NO. 3
OF 4
PLAN NO.
E 101