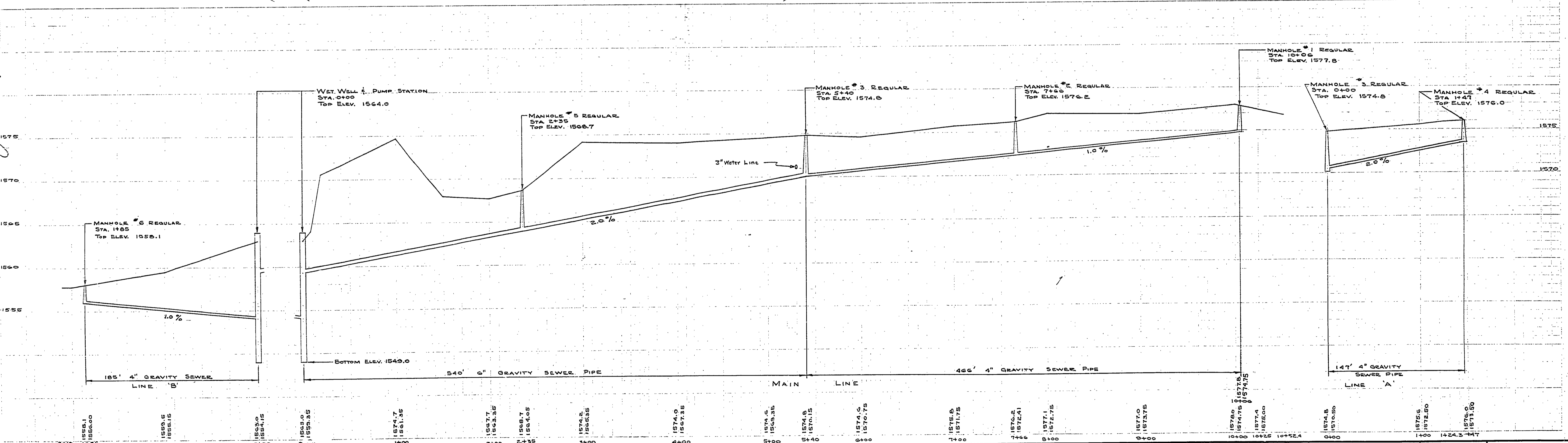
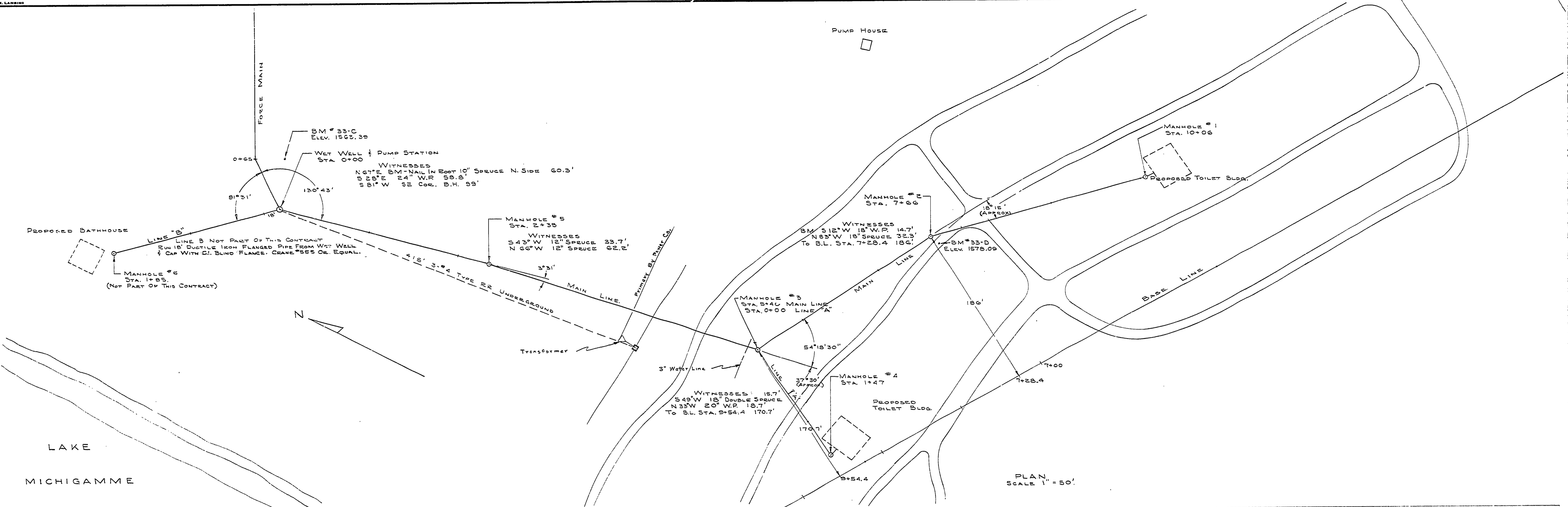


DESIGNED BY	DATE	REVIEWED	DATE	APPROVED	NO.	DATE	BY
B. H. G.	6-4-62	ARCHITECTURAL	6-23-62	<i>[Signature]</i>	1	7-16-62	
DRAWN BY	6-19-62	ENGINEERING	6-28-62	<i>[Signature]</i>	2		
CHECKED BY	6-17-62	LANDSCAPE	7-1-62	<i>[Signature]</i>	3		
					4		
					5		
					6		



GRAVITY SEWER LINE

MICHIGAN DEPARTMENT OF CONSERVATION PARKS AND RECREATION DIVISION

VAN RIPER STATE PARK CENTRAL SEWAGE DISPOSAL SYSTEM

SHEET NO. 2 OF 6 PLAN NO. E-104