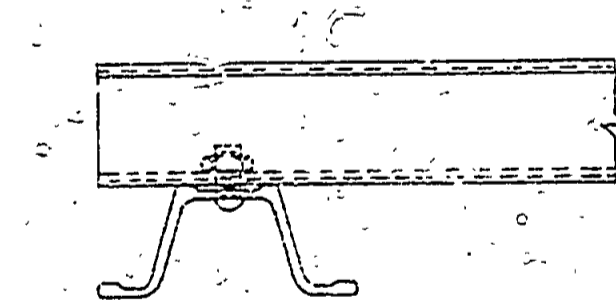
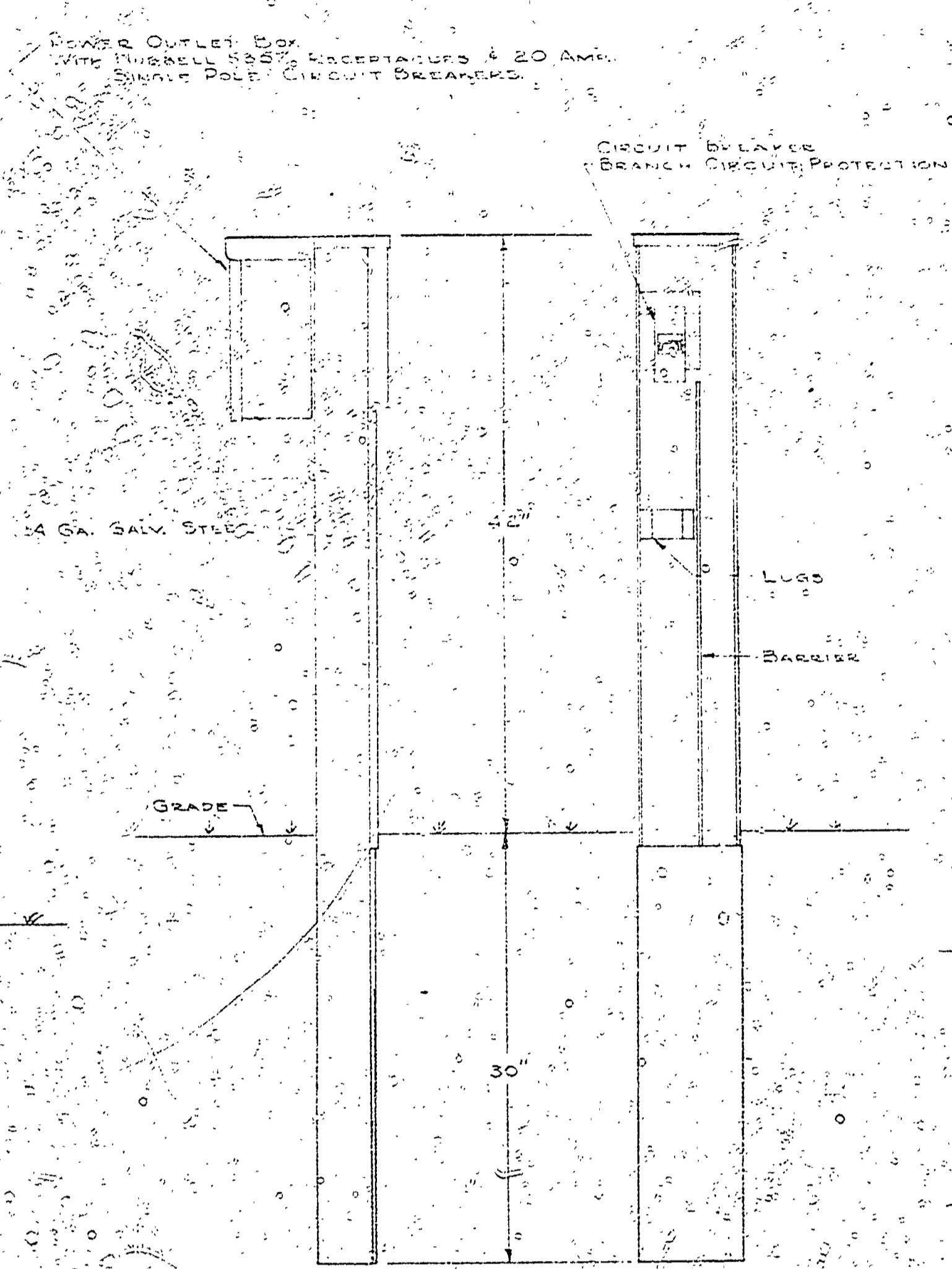


ENTRANCE RACK
WITH METER SOCKET & CIRCUIT BREAKER PANEL BOARD

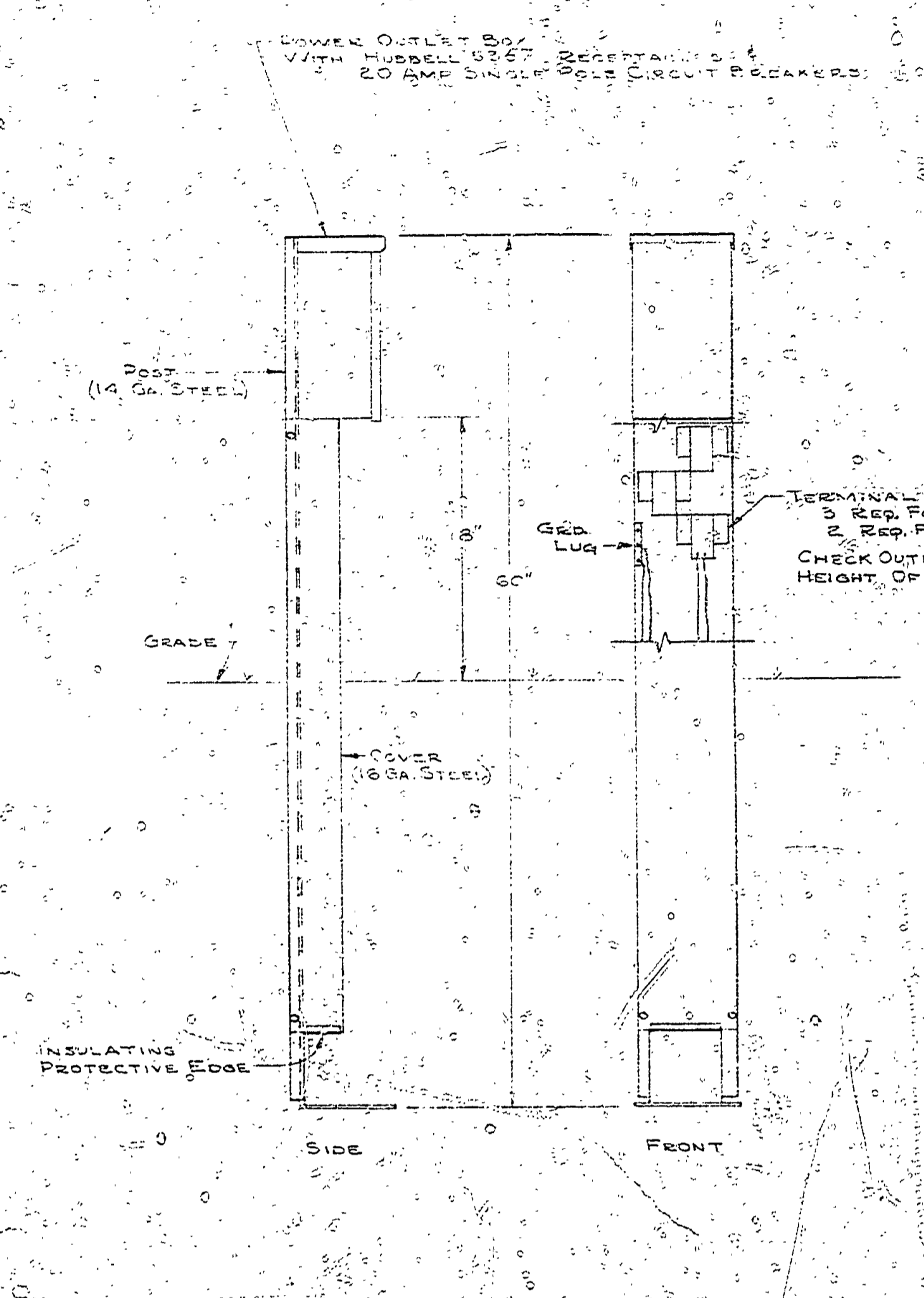
NOTE: Ground electrical system at distribution panelboard to nearest buried water pipe.



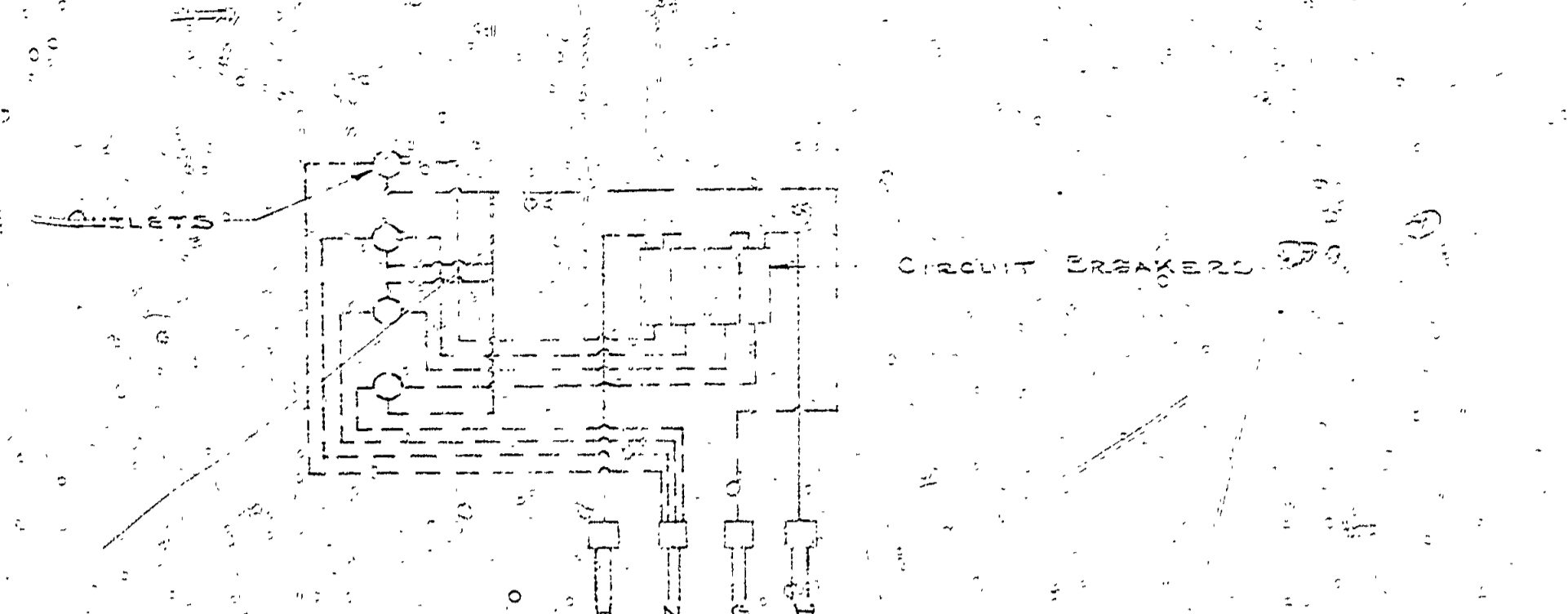
SECTION A-A
No SCALE



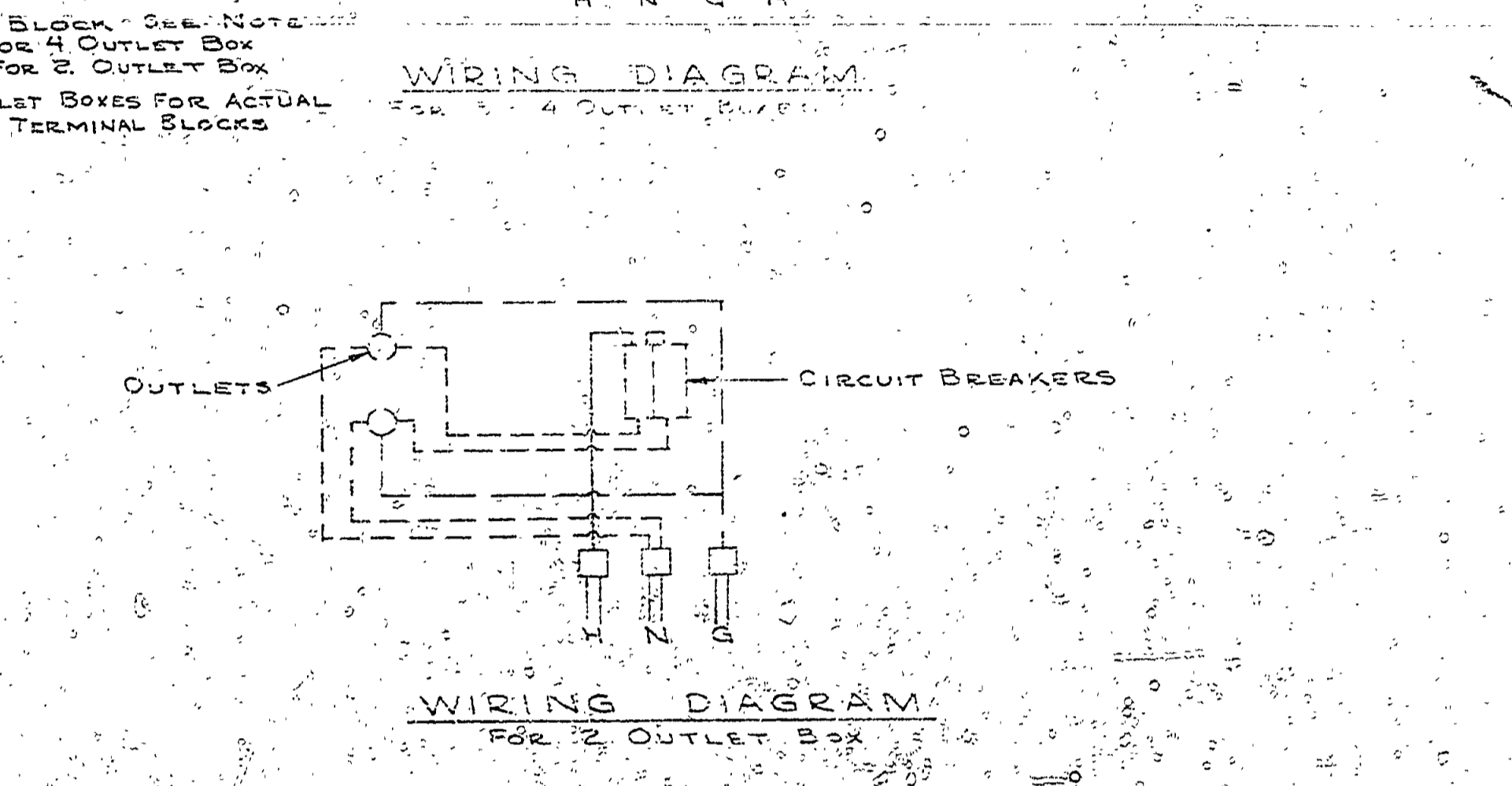
JUNCTION POST
WITH OUTLET BOX & BRANCH CIRCUIT PROTECTION



MOUNTING POST
WITH OUTLET BOX



WIRING DIAGRAM
FOR 4 OUTLET BOXES



WIRING DIAGRAM
FOR 2 OUTLET BOXES

NOTE: These posts are designed to permit splicing of cable from one unit to the next. Splicing to be done in post. Lugs are provided to receive up to #4/C wire. Grounding bars for equipment ground provided on post.

SURVEYED BY	DRAWN BY J. YOUNG & E. HANCOCK	NO.	DATE	BY	REVISIONS	NO.	DATE	BY	REVISIONS
DESIGNED BY W. J. DAVIS	CHECKED BY	1.	4-15-58	J.Y.	WIRING DIA. REV. TERMINAL BLOCK ADDED	3.			
	DATE	2.	11-22-58	J.Y.	CONDUIT BUSHING ADDED	4.			

MICHIGAN DEPARTMENT OF CONSERVATION	STANDARD PLAN UNDERGROUND SECONDARY FOR CAMPGROUND	SHEET NO. OF	VAN RIPER STATE PARK
		FOR PROJECT NO. 24-1235	SHEET 2 OF 2 PLAN NO. E-109