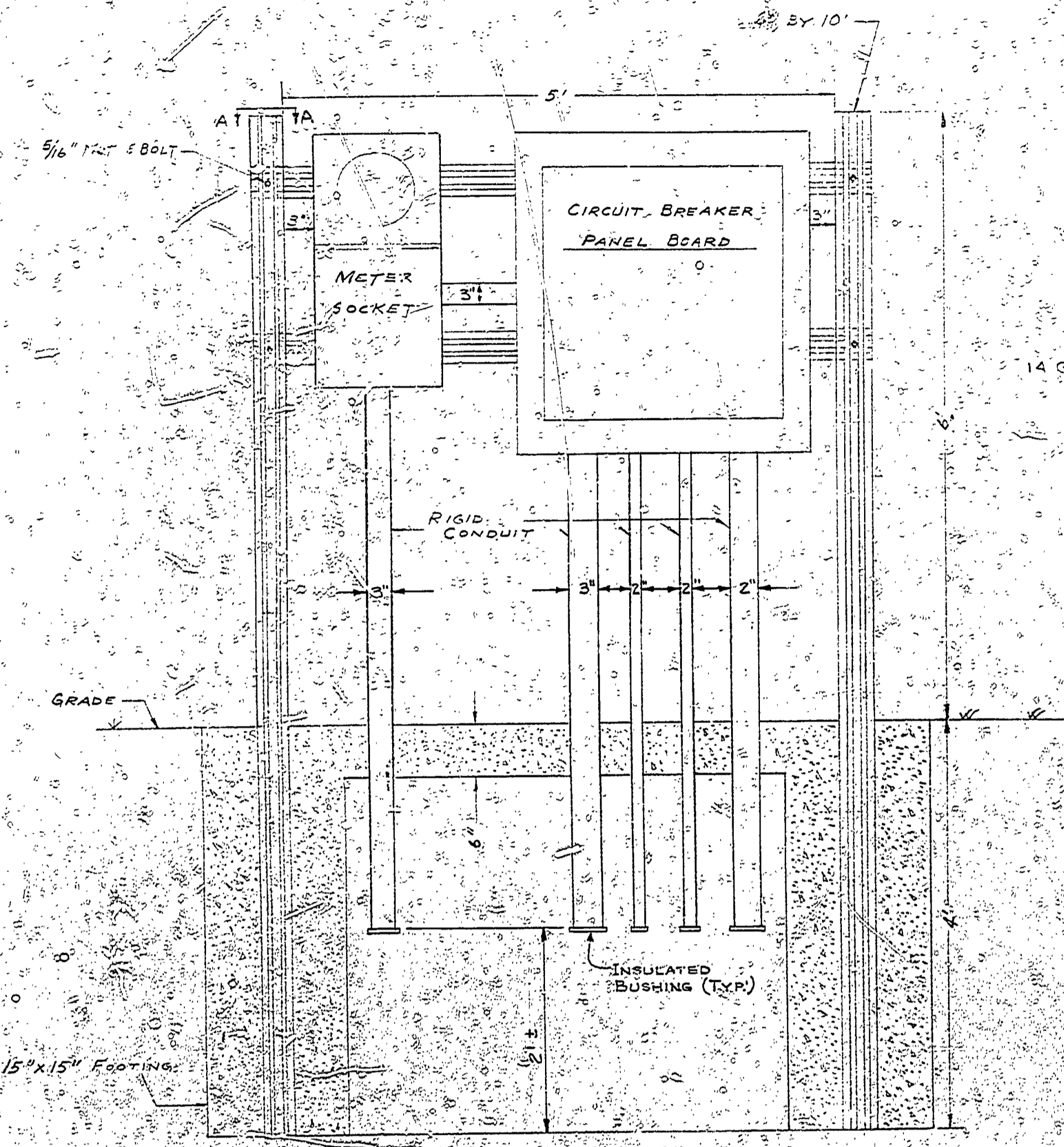
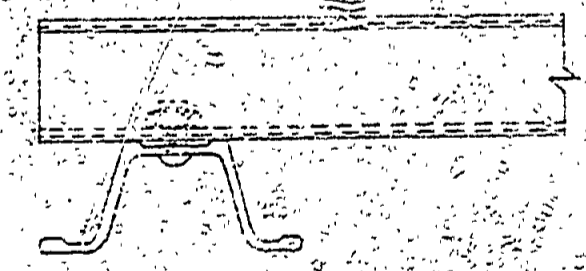


POWER OUTLET BOX
With 11 Model 5557 receptacles & 20 AMP
Circuit Breaker

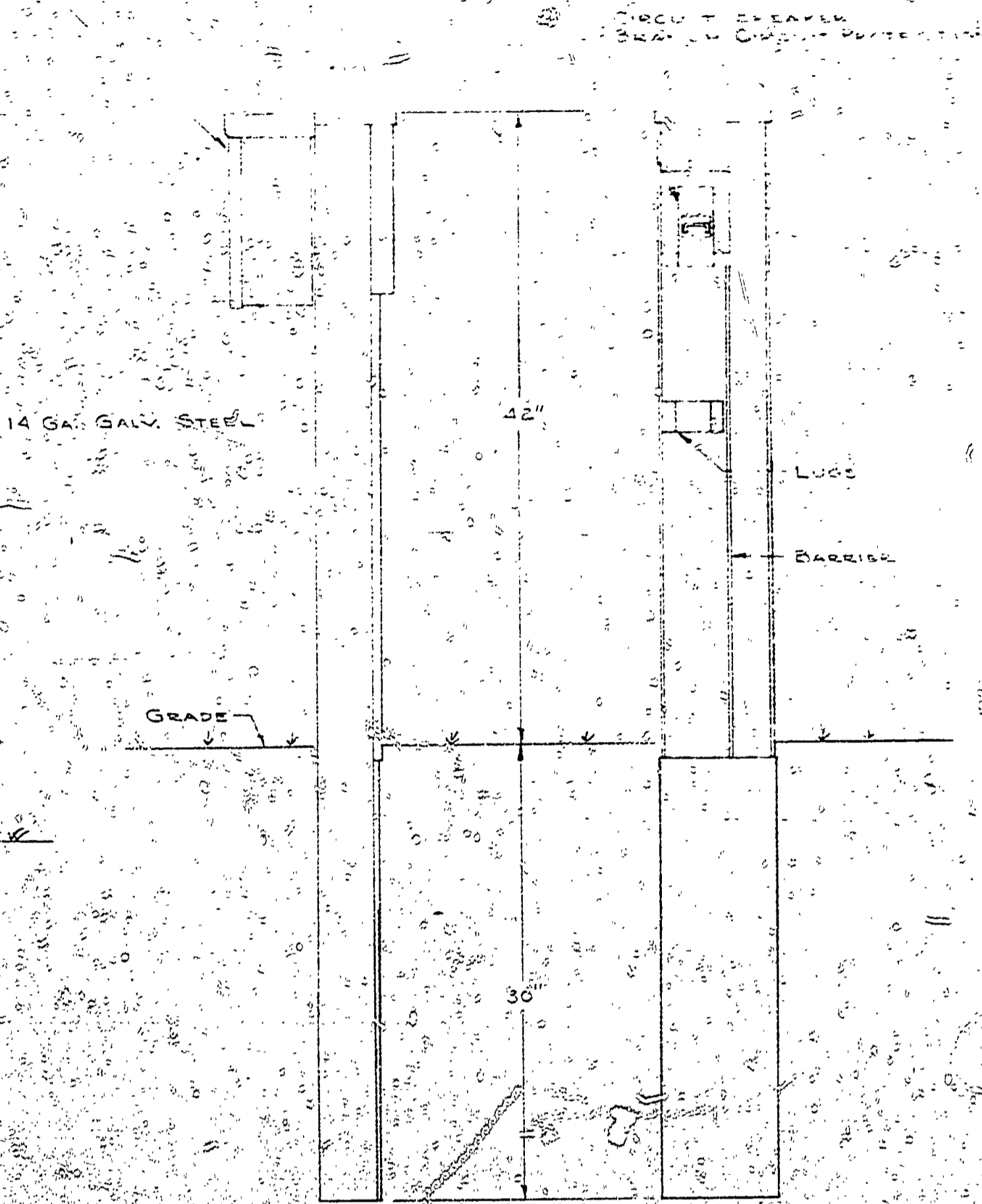
POWER OUTLET BOX
With 11 Model 5557 receptacles & 20 AMP
Circuit Breaker



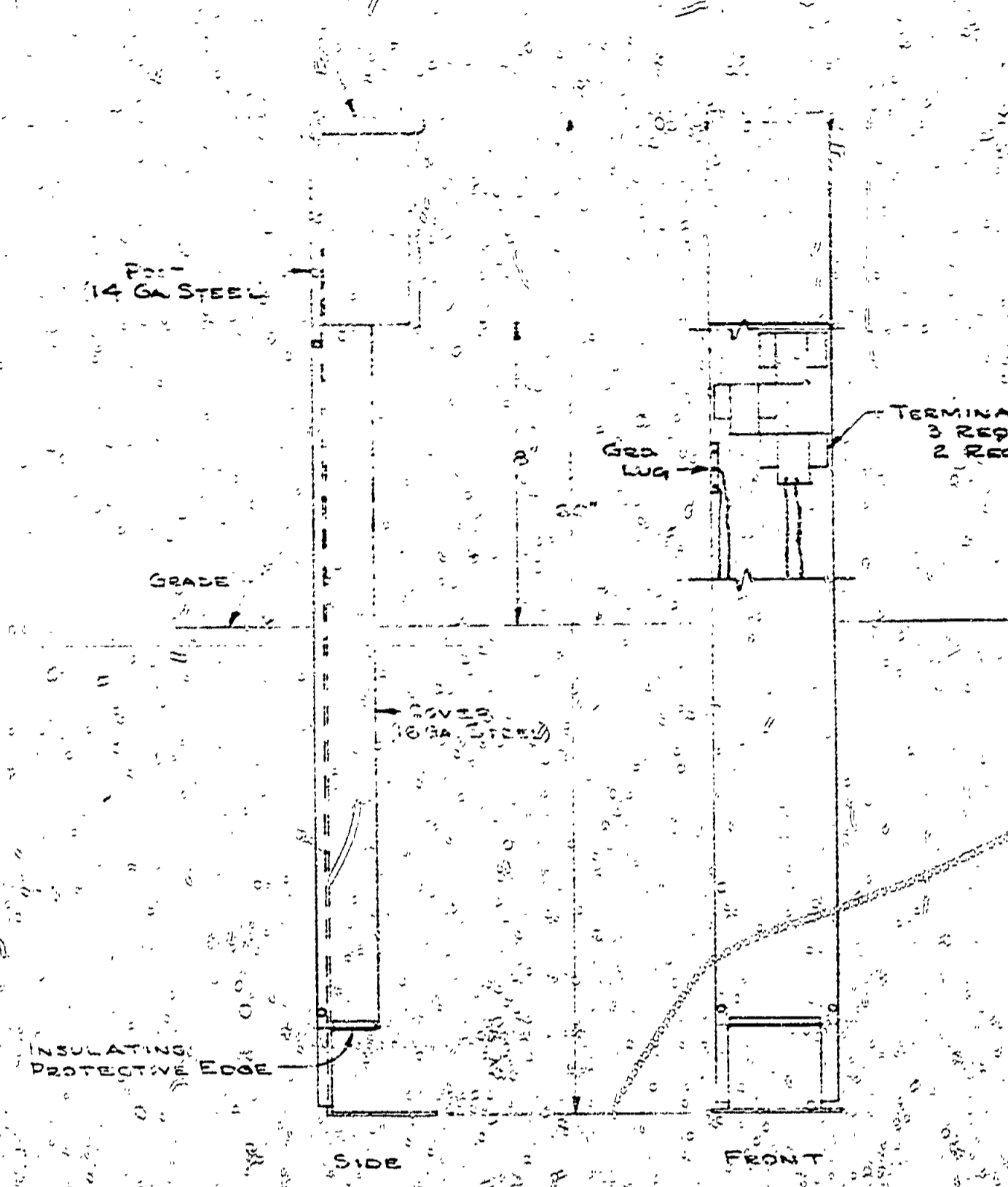
ENTRANCE RACK
WITH METER SOCKET & CIRCUIT BREAKER PANEL BOARD
NOTE: GROUND ELECTRICAL SYSTEM AT DISTRIBUTION
PANEL BOARD TO NEAREST BURIED WATER PIPE



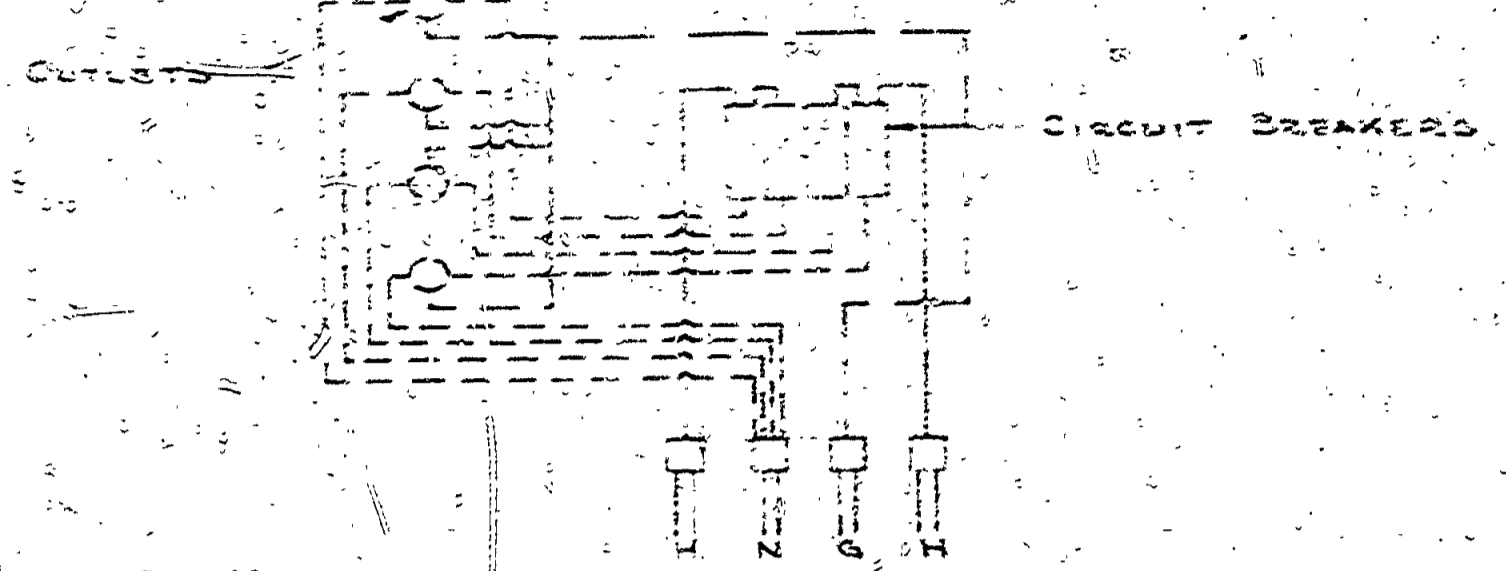
SECTION A-A
NO SCALE



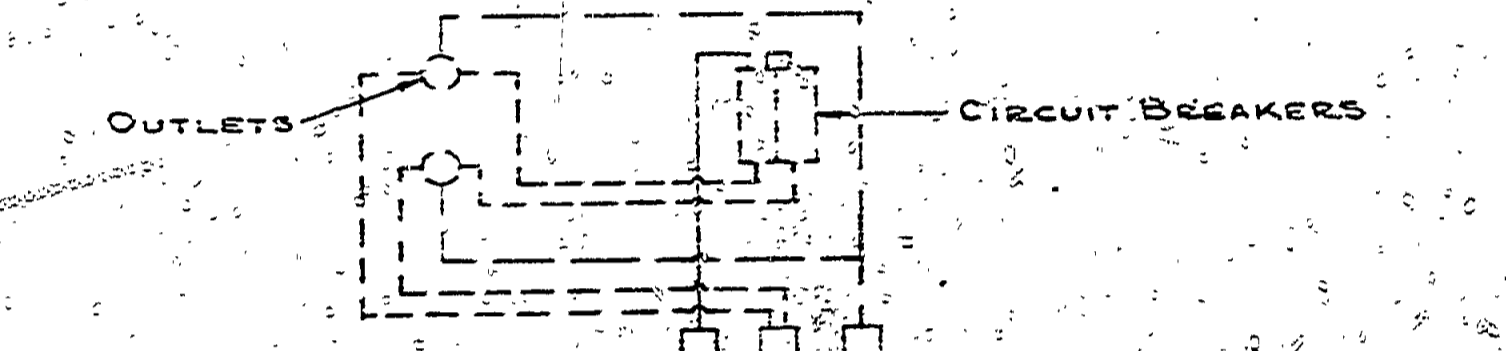
JUNCTION POST
WITH OUTLET BOX & BRANCH CIRCUIT PROTECTION



MOUNTING POST
WITH OUTLET BOX



WIRING DIAGRAM
FOR 4 OUTLET BOXES



WIRING DIAGRAM
FOR 2 OUTLET BOXES

NOTE: THESE POSTS ARE DESIGNED TO PERMIT LOOPING OF
CABLE FROM ONE UNIT TO THE NEXT. SPACING TO BE
DONE IN POST. LUGS ARE PROVIDED TO RECEIVE UP TO
#4/0 WIRE. GROUNDING BARS TO EQUIPMENT GROUND
PROVIDED ON POST.

CIRCUIT BREAKER SCHEDULE

BRANCH #1	125 AMP
BRANCH #2	90 AMP
BRANCH #3	100 AMP
BRANCH #4	90 AMP
BRANCH #5	70 AMP

SURVEYED BY	DRAWN BY	NO.	DATE	BY	REVISIONS	NO.	DATE	BY	REVISIONS
	J. YOMA & E. HARRY	1	4-15-68	J.Y.	WIRING DIAG. REV., TERMINAL BLOCK REPR	2			
		2				4			