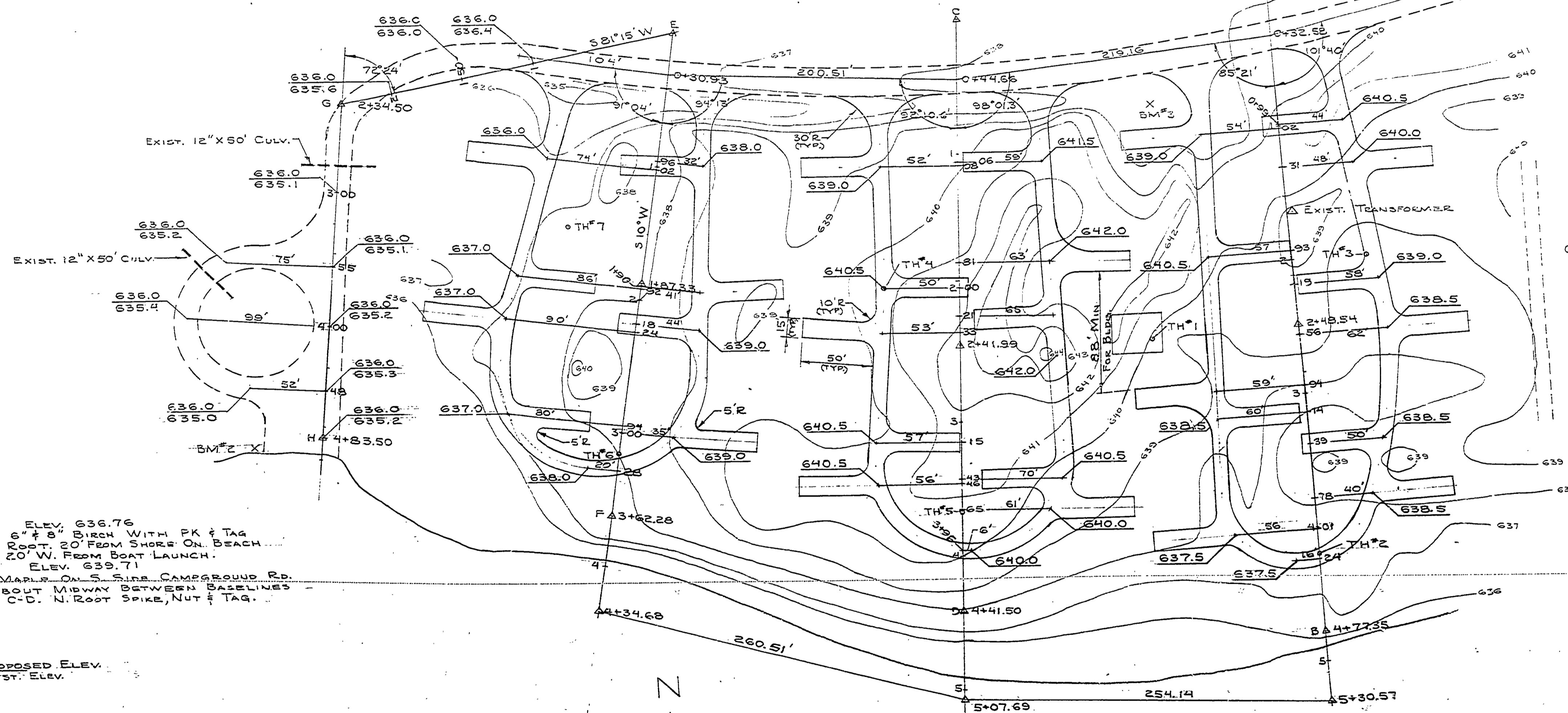
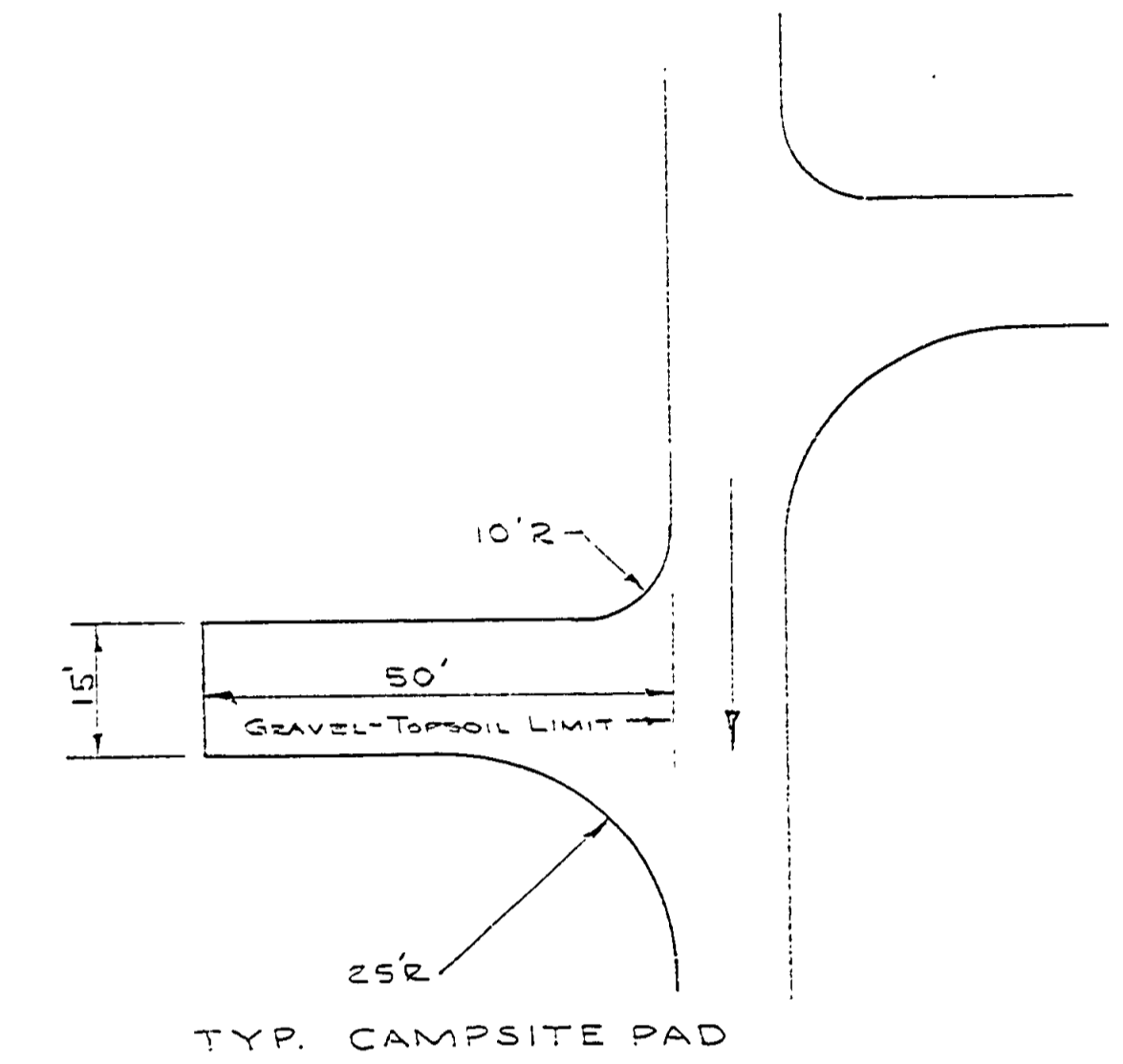
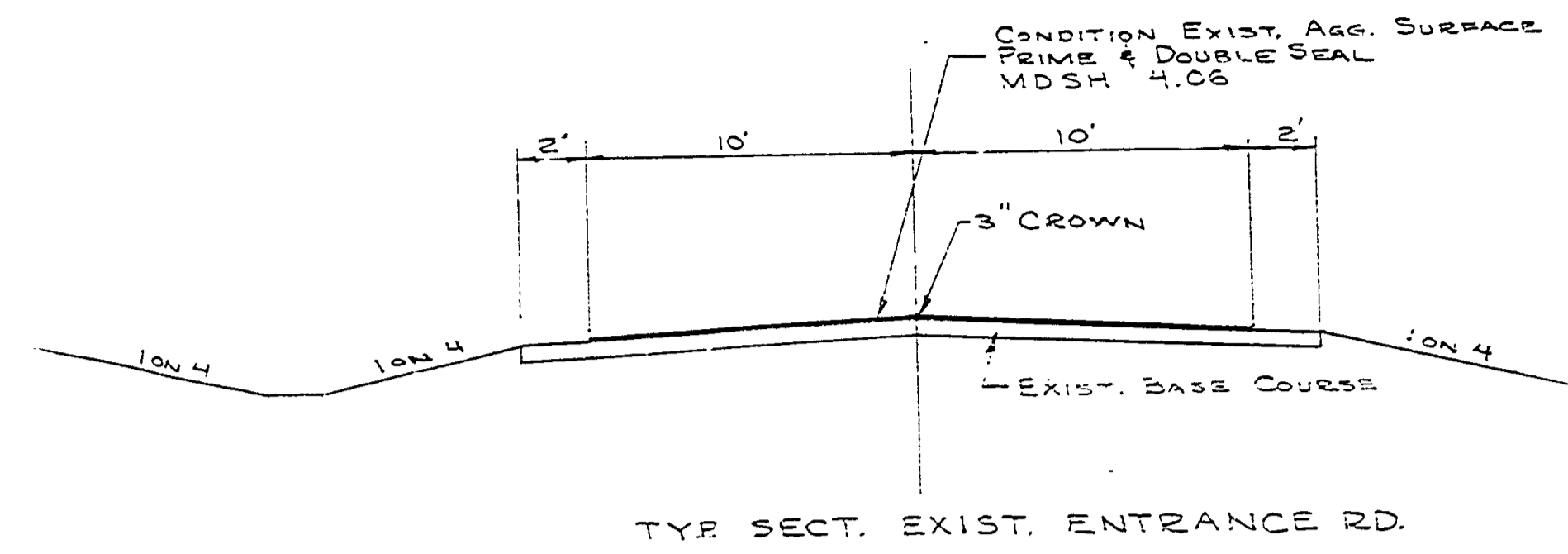
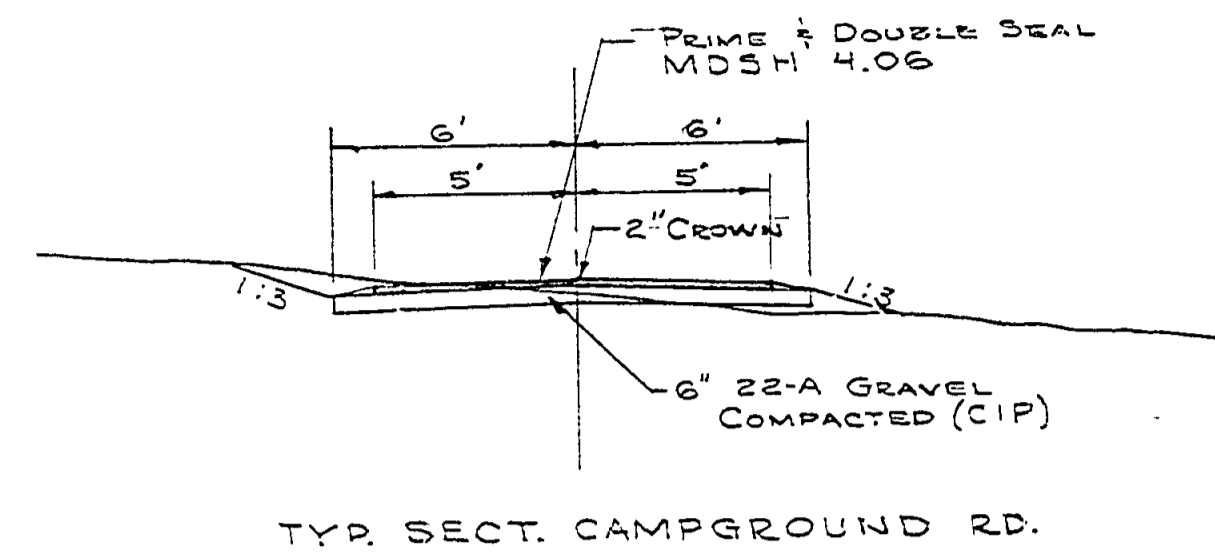


- WITNESSES**
- Pt. A 1" PIPE FLUSH WITH GROUND
 N16°W 7.47' 9" MAPLE SPIKE & TAG
 S61°W 10.21' 4" MAPLE SPIKE & TAG
- POT 2+48.54 TACKED HUB
 S78°E 3.79' 15" BEACH SPIKE & TAG
 N30°W 26.35' 16" MAPLE SPIKE & TAG
- Pt. B 4+77.35 2" PIPE FLUSH WITH GROUND
 S85°E 15.19' 12" BIRCH SPIKE & TAG
 S56°W 15.04'
- Pt. C 0+00 1" PIPE FLUSH WITH GROUND
 S89°W 16.83' 10" BIRCH SPIKE & TAG
 S41°E 9.24' 6" MAPLE SPIKE & TAG
- POT 2+41.99 TACKED HUB
 N105°W 16.63' 6" MAPLE SPIKE & TAG
 S09°E 50.63' 14" MAPLE SPIKE & TAG
- Pt. D 4+41.50 2" PIPE FLUSH WITH GROUND
 N23°E 7.81' 8" BIRCH SPIKE & TAG
 S85°E 4.22' 10" MAPLE SPIKE & TAG
- Pt. E 0+00 1" PIPE FLUSH WITH GROUND
 N10°W 10.02' 12" MAPLE SPIKE & TAG
 Z145°E 14.91' 11" BIRCH SPIKE & TAG
- POT 1+57.53 TACKED HUB
 S10°E 14.19' 10" MAPLE SPIKE & TAG
 S33°E 12.75' 11" MAPLE SPIKE & TAG
- Pt. F 3+62.25 1" PIPE FLUSH WITH GROUND
 Z170°E 11.16' 8" MAPLE SPIKE & TAG
 S5°W 5.90' 9" BIRCH SPIKE & TAG



BM#2 ELEV. 636.75
 A TWIN 6" & 8" BIRCH WITH PK & TAG
 IN NW ROOT, 20' FROM SHORE ON BEACH
 RIDGE, 20' W. FROM BOAT LAUNCH.

BM#3 ELEV. 639.71
 A 12" MAPLE ON S. SIDE CAMPGROUND RD.
 AND ABOUT MIDWAY BETWEEN BASELINES
 A-B & C-D. N. ROOT SPIKE, NUT & TAG.

- TEST HOLE**
- #1 BASELINE A-B STA. 2+50, 100' RT.
0'-3.7' MED. SAND
3.7'-4.5' GRAVEL
 - #2 BASELINE A-B STA. 4+20.
0.0'-2.5' SAND & GRAVEL
 - #3 BASELINE A-B STA. 2+00, 51' L.
0.0'-2.5' COARSE SAND
 - #4 BASELINE C-D STA. 2+00, 50' R.
0.0'-1.0' COARSE SAND
1.0'-1.5' GRAVEL
 - #5 BASELINE C-D STA. 3+65
0.0'-0.9' SAND
0.9'-1.9' GRAVEL
 - #6 BASELINE E-F STA. 3+16.
0.0'-2.2' COARSE SAND & GRAVEL
 - #7 BASELINE E-F STA. 1+50, 55' R.
0.0'-2.5' COARSE SAND & GRAVEL

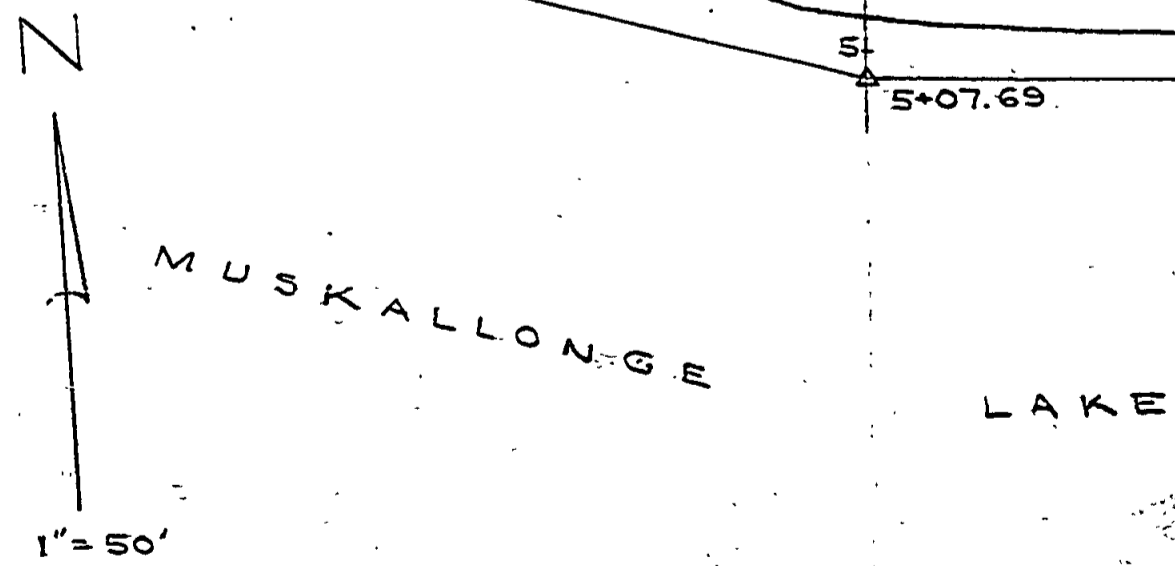
PROPOSED ELEV.
 EXIST. ELEV.

CAMPSITE PAD LOCATIONS MAY BE ADJUSTED
 IN THE FIELD TO SAVE DESIRABLE TREES.

PADS TO BE 60/40 GRAVEL TOPSOIL MIX, 4" DEEP.
 SLOPE TO DRAIN.

FERTILIZE, SEED & MULCH PADS & ALL
 DISTURBED AREAS.

NOTE: CONTRACTOR SHALL NOTIFY ALL
 UTILITY COMPANIES CONCERNED ONE
 WEEK BEFORE STARTING CONSTRUCTION.



SURVEYED BY		DRAWN BY J. YPKA		Z-74		NO. DATE BY		REVISIONS		NO. DATE BY		REVISIONS		MICHIGAN DEPARTMENT OF NATURAL RESOURCES		CAMPGROUND LAYOUT		MUSKALLONGE LAKE STATE PARK		PROJECT NO. 24-1473	
DESIGNED BY R. H. McREILL		CHECKED BY		DATE		1. 2/23/74		BOAT LAUNCH ADDED		3.				DEPARTMENT OF NATURAL RESOURCES		CAMPGROUND DEVELOPMENT		AREA OR PARK STATE PARK		SHEET 2 OF 5	
DATE		DATE		DATE		2.		200' X 50' SIGN		4.				SHEET TITLE		PROJECT		PLAN NO. E-106			