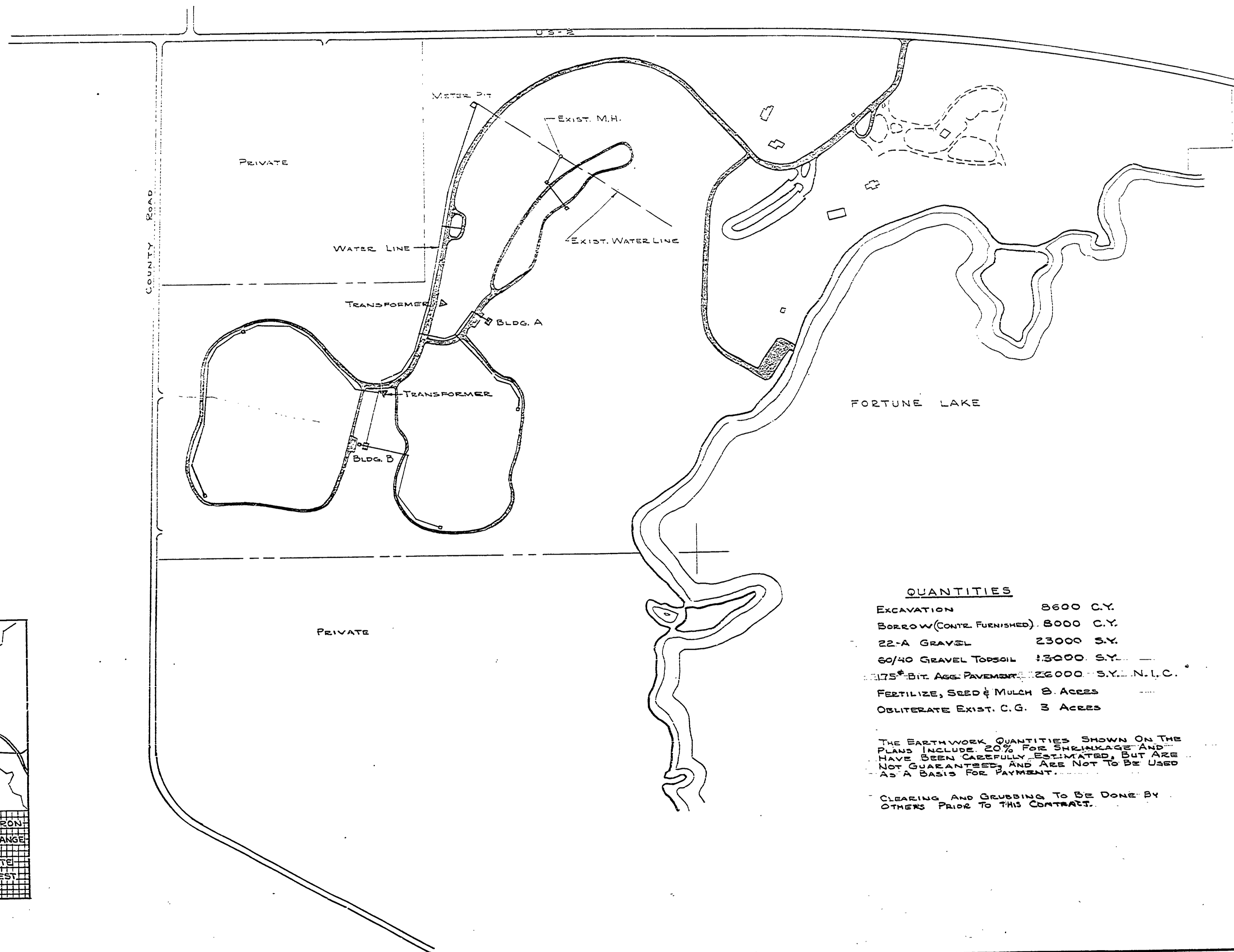
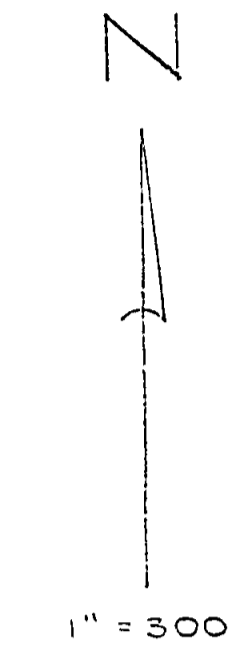


BEWABIC STATE PARK CONSTRUCTION PLANS FOR CAMPGROUND DEVELOPMENT

PROJECT NO. 24-1459



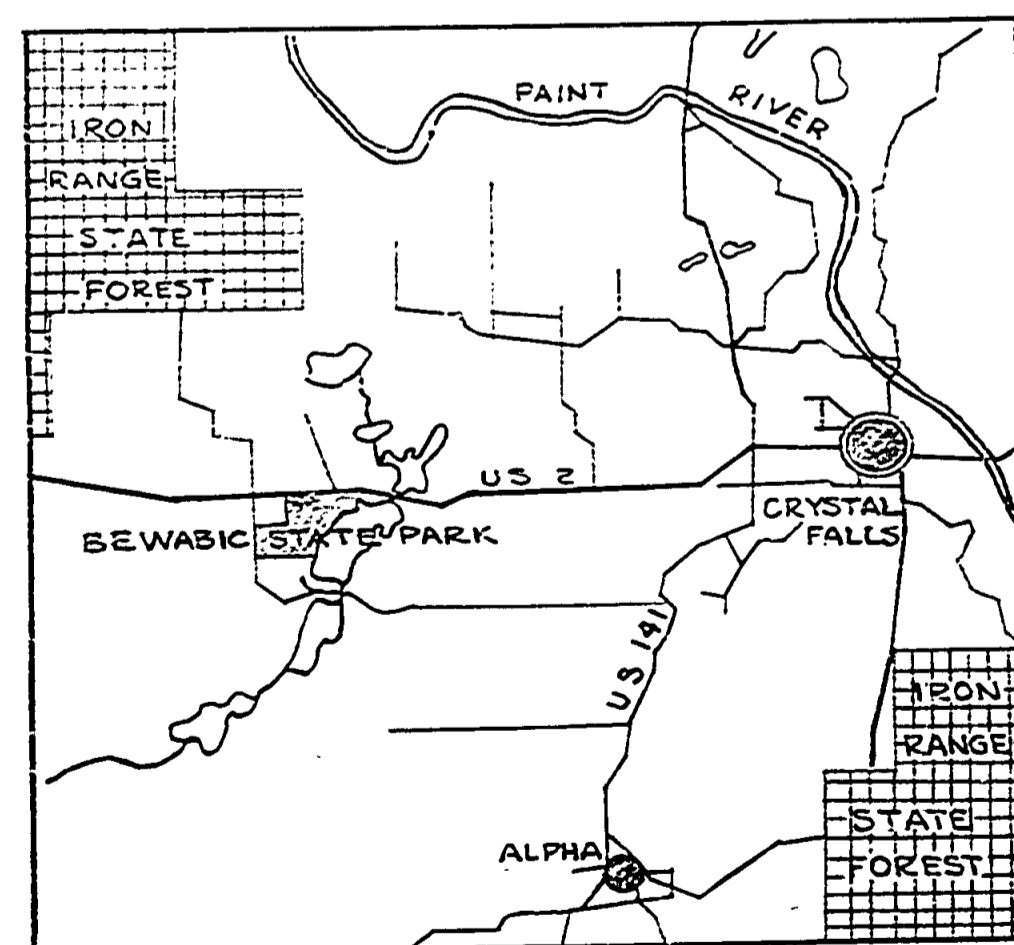
- LEGEND**
- EXIST. ROAD
 - NEW ROADS & EXIST. ROADS TO BE WIDENED
 - EXIST. RD. - OBLITERATE
 - EXIST. BLDG.
 - NEW BLDG.
 - (N.I.C.) NOT IN CONTRACT

- INDEX**
- 1 COVER
 - 2 ENTRANCE ROAD
 - 3 EXIST. ENT. & BOAT LAUNCH RD. IMPROVEMENT
 - 4 CAMPGROUND LAYOUT & GRADES
 - 5 SANITATION STATION
 - 6 WATER SYSTEM & SEWAGE DISPOSAL
 - 7 DRINKING FOUNTAIN PLAN
 - 8 ELECTRICAL SYSTEM
 - 9 STD. PLAN UNDERGROUND SECONDARY

- QUANTITIES**
- EXCAVATION 8600 C.Y.
 - BORROW (CONTR. FURNISHED) 8000 C.Y.
 - 22-A GRAVEL 23000 S.Y.
 - 60/40 GRAVEL TOPSOIL 13000 S.Y.
 - 1 1/2" BIT ASP. PAVEMENT 22000 S.Y. N.I.C.
 - FERTILIZE, SEED & MULCH 8 ACRES
 - OBLITERATE EXIST. C.G. 3 ACRES

THE EARTHWORK QUANTITIES SHOWN ON THE PLANS INCLUDE 20% FOR SHRINKAGE AND HAVE BEEN CAREFULLY ESTIMATED, BUT ARE NOT GUARANTEED, AND ARE NOT TO BE USED AS A BASIS FOR PAYMENT.

CLEARING AND GRUBBING TO BE DONE BY OTHERS PRIOR TO THIS CONTRACT.



LOCATION MAP

BUILDING COMMITTEE APPROVAL	
BY: _____	DATE: _____
RECOMMENDED <i>W.H. G... 12-7-73</i>	
FOR APPROVAL _____ SUPERVISOR DATE	
RECOMMENDED <i>James P. ... 1/10/74</i>	
FOR APPROVAL _____ DIVISION/REGION APPROVAL	
BY: <i>W.H. G...</i>	DATE: <i>12/7/73</i>
DIVISION CHIEF/REGIONAL ENGINEER	
APPROVED: <i>H. M...</i>	DATE: <i>1-10-74</i>
CHIEF ENGINEER	

SURVEYED BY	DRAWN BY <i>J. Ypma</i>	DESIGNED BY <i>R. H. MERRILL</i>	CHECKED BY	NO. DATE BY REVISIONS	NO. DATE BY REVISIONS	MICHIGAN DEPARTMENT OF NATURAL RESOURCES	COVER SHEET SHEET TITLE	BEWABIC STATE PARK AREA OR PARK	PROJECT NO. 24-1459
				1. _____	3. _____			CAMPGROUND DEVELOPMENT	
				2. _____	4. _____				SHEET 1 OF 3 PLAN NO. E-101