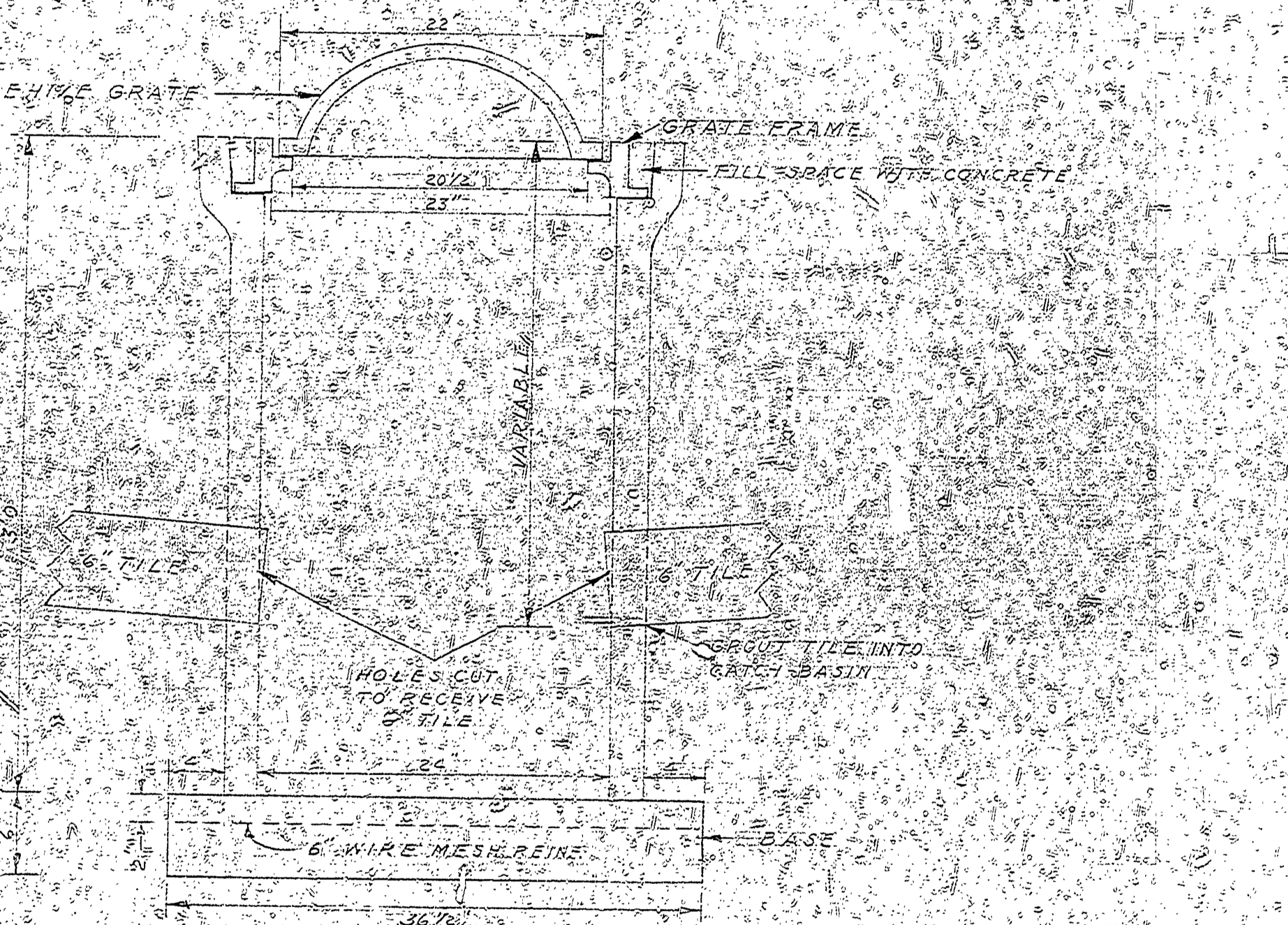
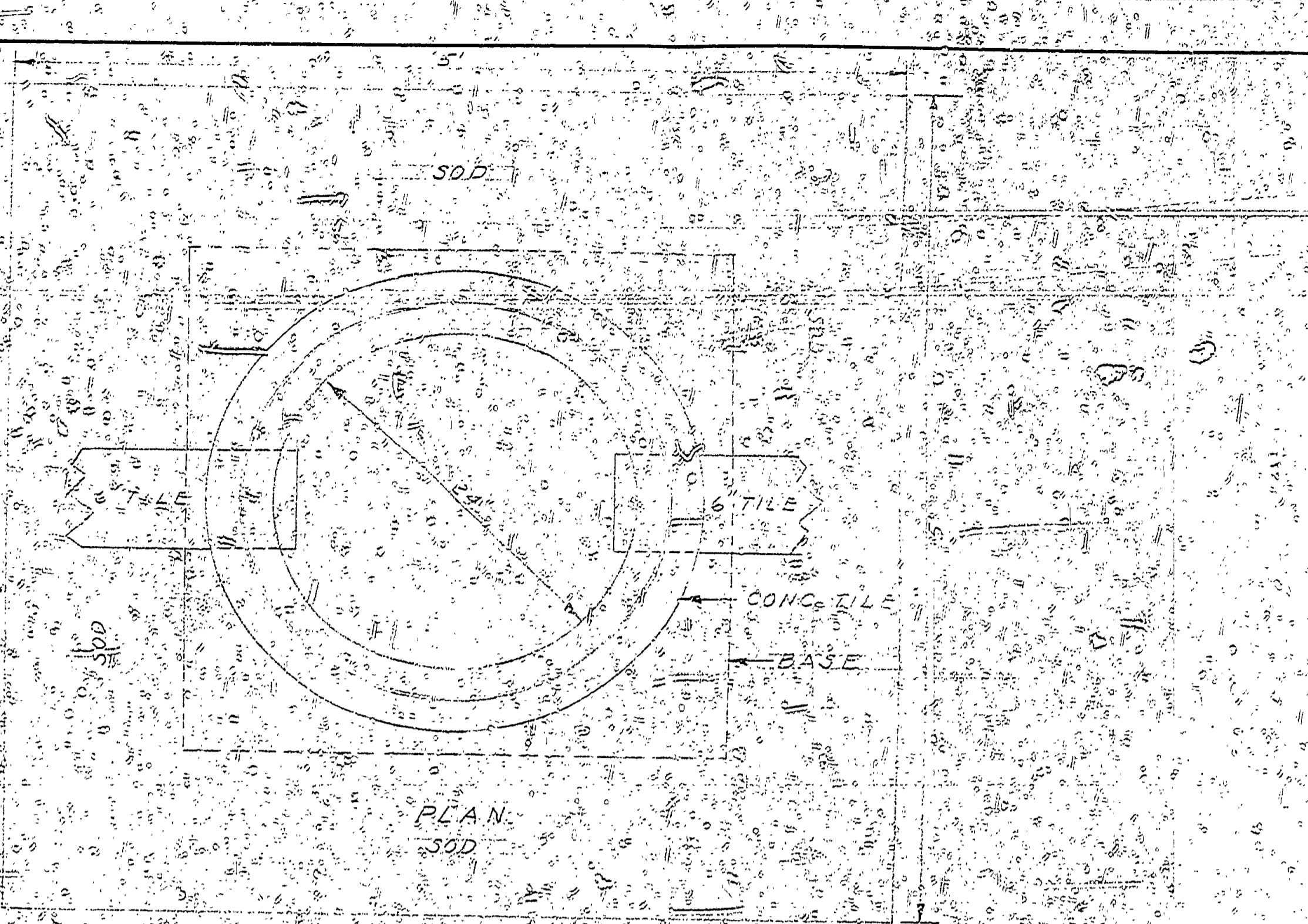
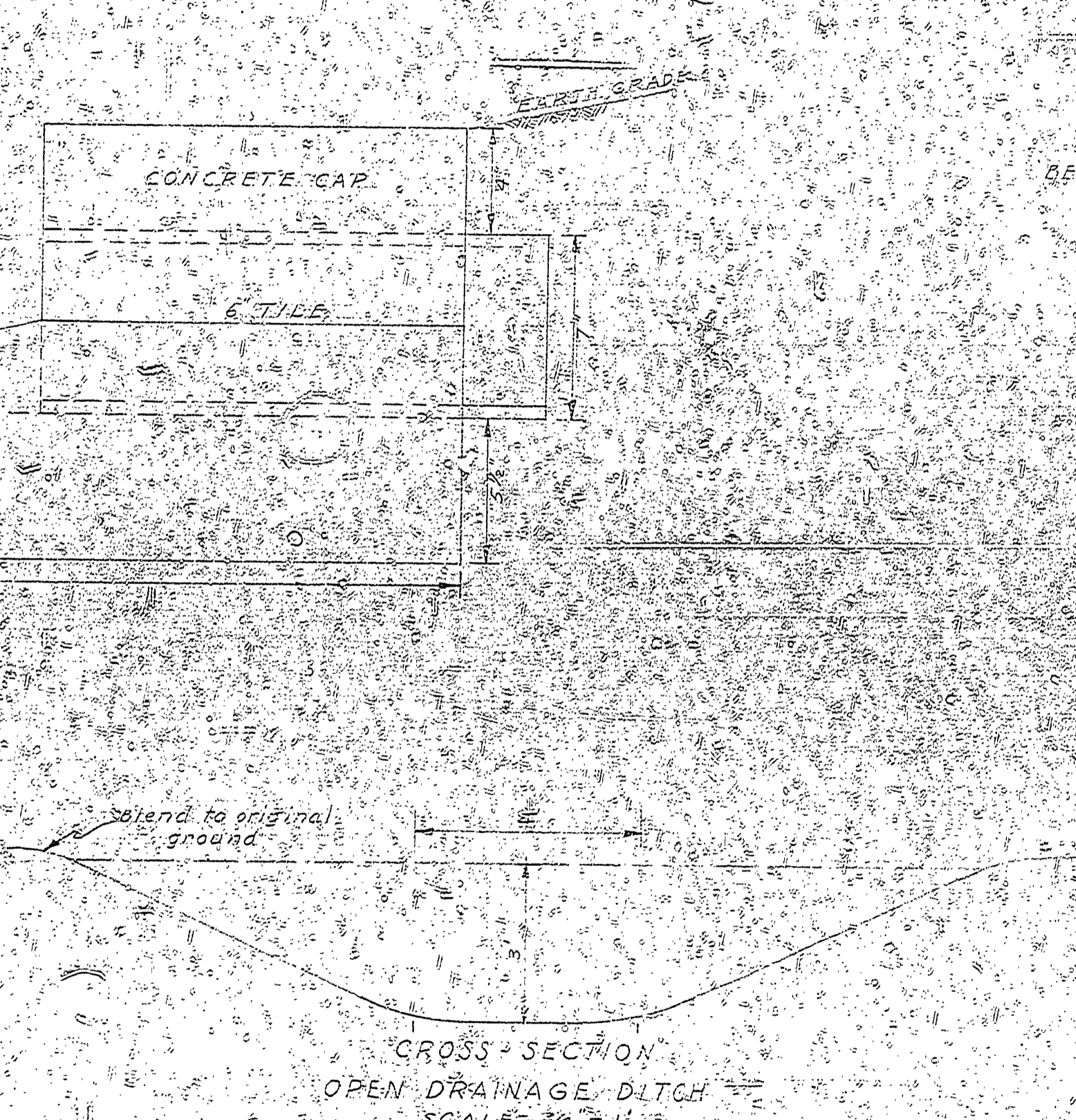
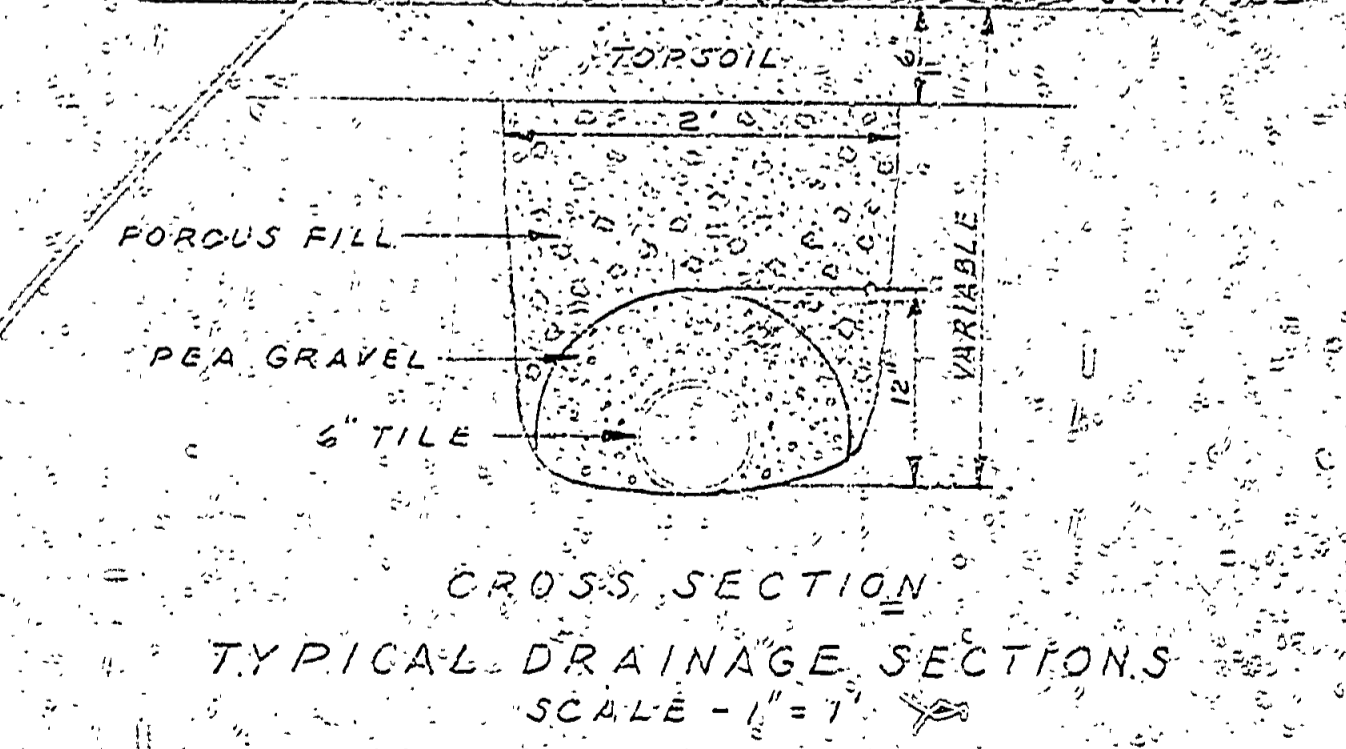
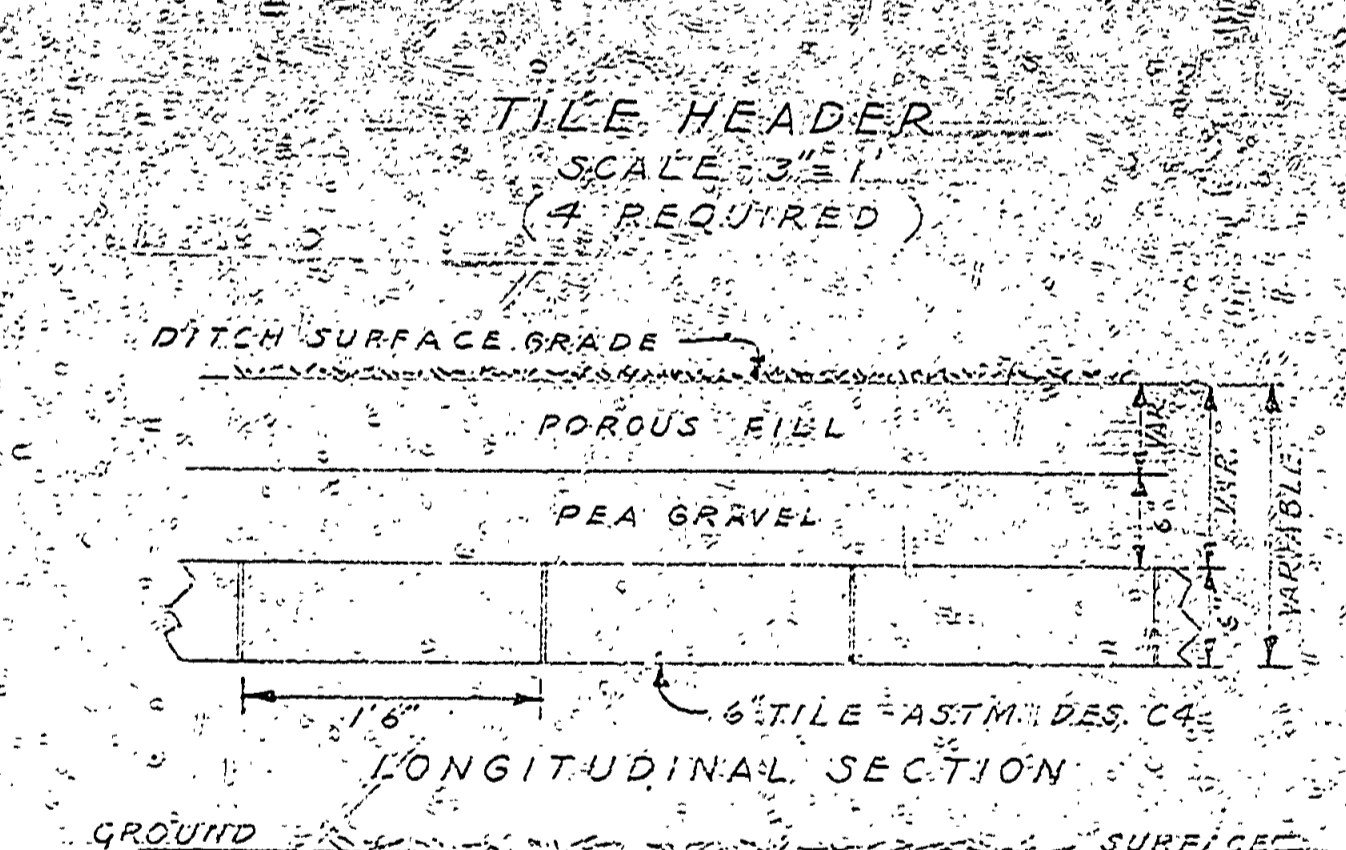
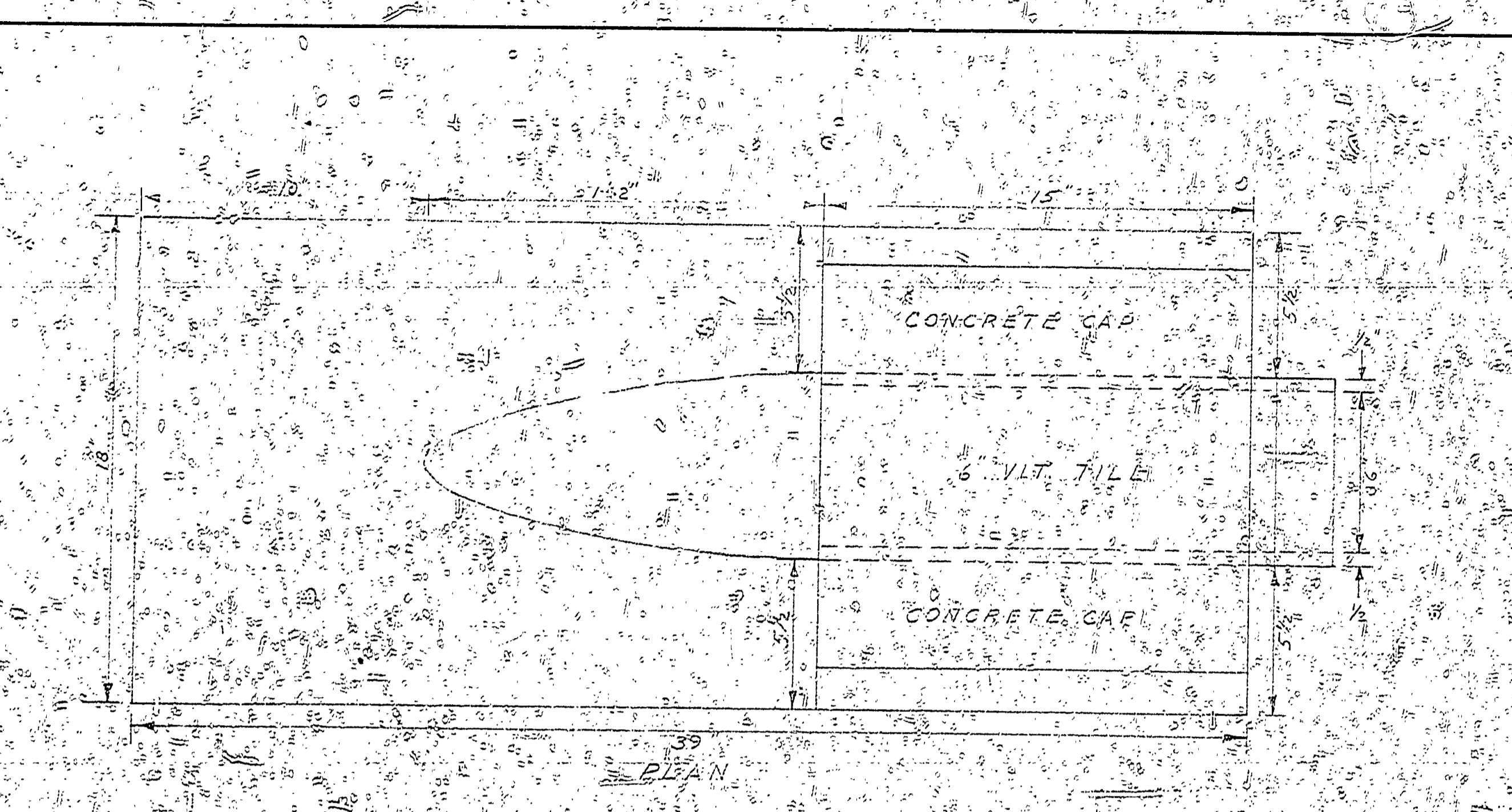
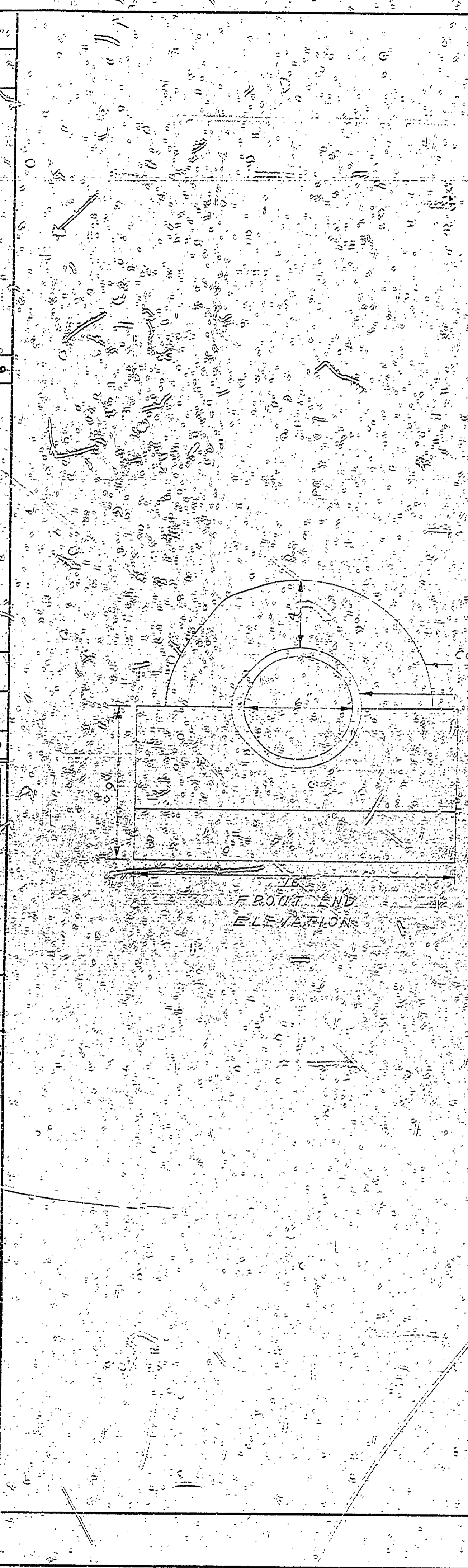


NO.	DATE	BY	REVISIONS
1			
2			
3			
4			
5			
6			

DATE	2-28-53
CHECKED BY	J.L.P.
TRACED BY	J.M.C.



NOTE - 12 Catch Basins are required. A having only 6" tile opening. Use Grade A concrete in base. The beehive grate to be similar to the Heeneh Pary Co. grate No. R-2563.