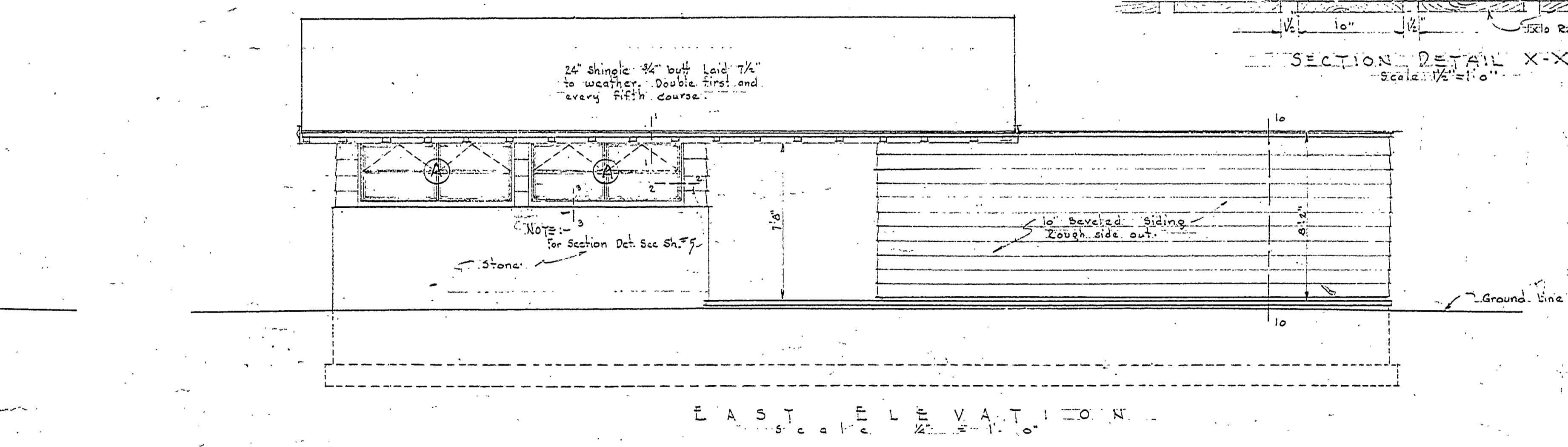
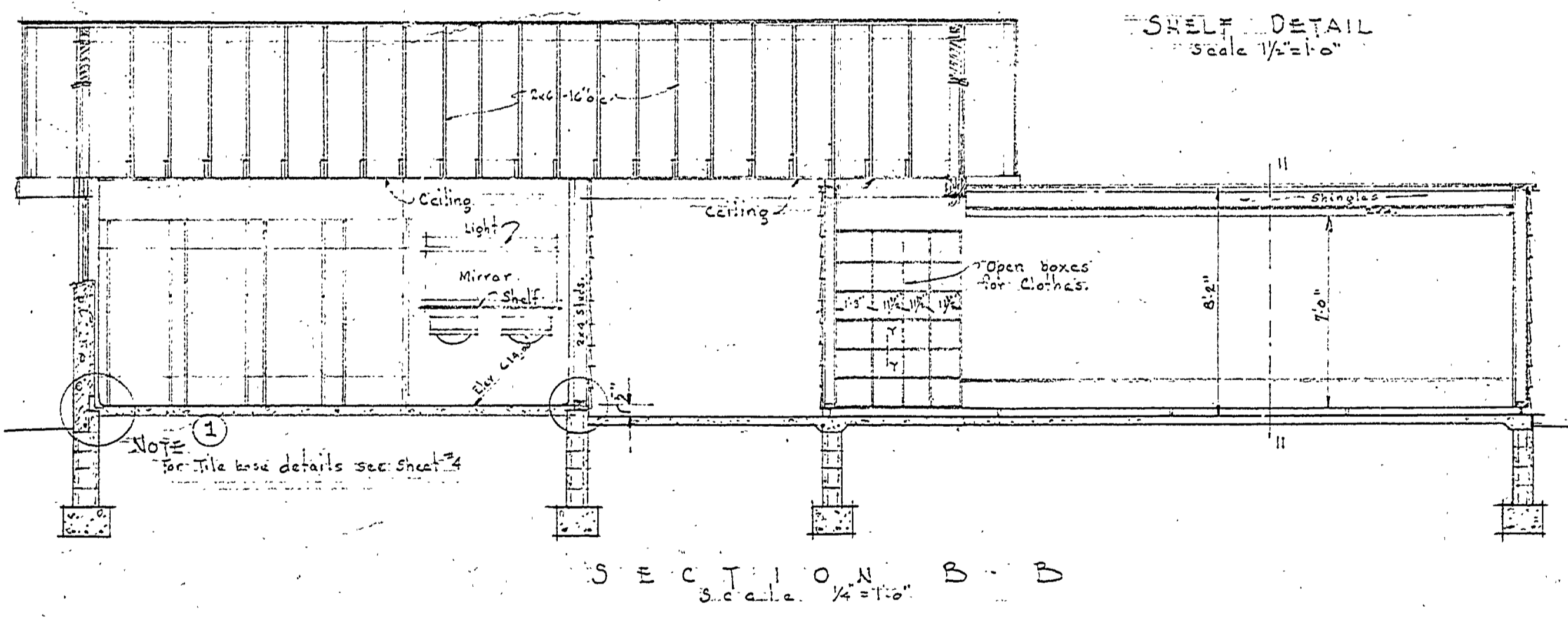
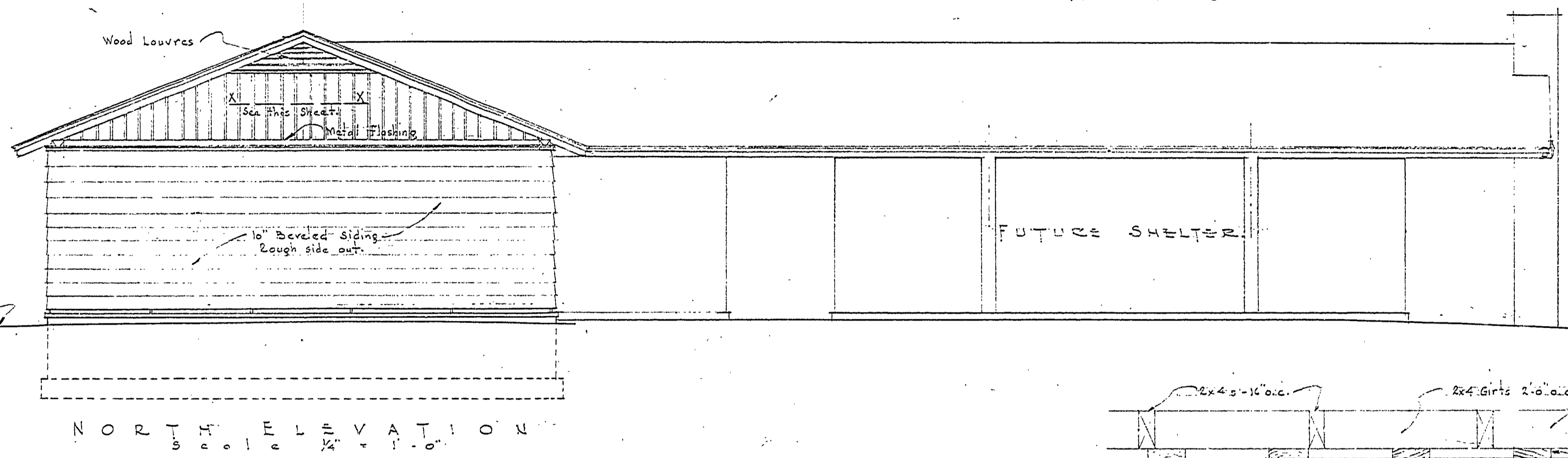
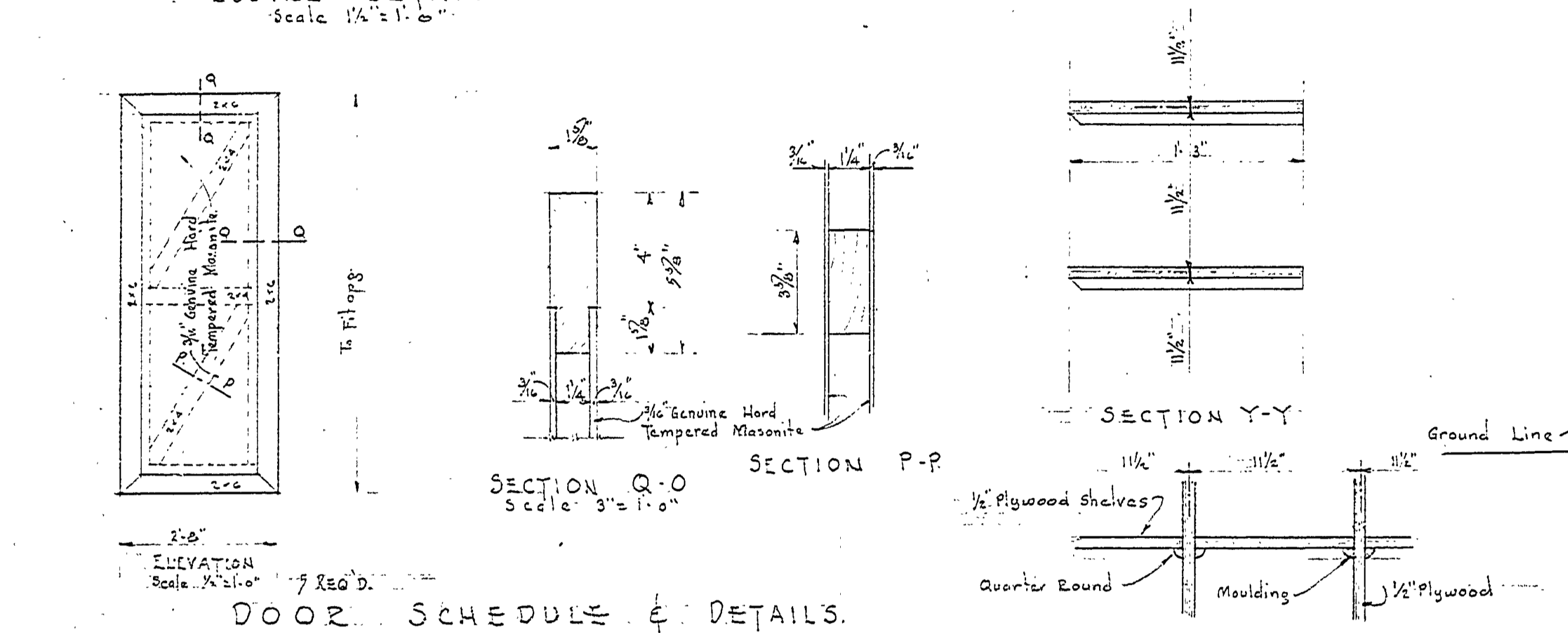
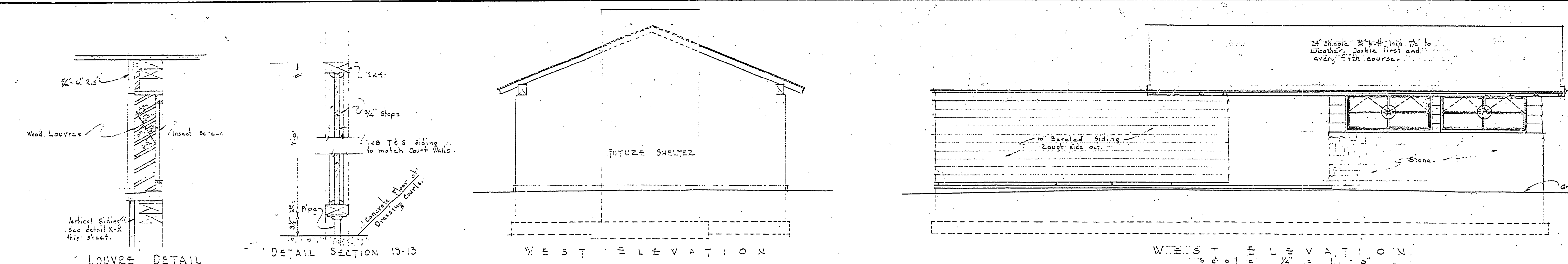


DESIGNED BY	J.M. D. GREEKINWOOD
DRAWN BY	J.M.F.
CHECKED BY	J.V.F.
DATE	1-30-53
REVIEWED BY SECTIONS	ARCHITECTURAL
DATE	1-21-53
APPROVED BY	H.C.M. 3/20/53
DATE	1-21-53
ASSISTANT CHIEF IN CHARGE	J.I.R.
OF DESIGN	1-21-53
DATE	1-21-53
NO.	1
DATE	2-3-54
BY	J.V.F.
REVISIONS	4
DATE	1-1-56
BY	J.V.F.
REVISIONS	5
DATE	1-1-56
BY	J.V.F.
REVISIONS	6
DATE	1-1-56



**FINISH SCHEDULE**

ROOF SHINGLES, Carbo Sata Cresote (by immersion method)

EXTERIOR SIDING AND WOODWORK, Light brown creosote stain to match color of campground toilet laundry and shower building.

Steel Sash, painted black

SANDSTONE EXTERIOR, Two (2) coats colorless masonry sealer (Hydracide SX colorless silicone masonry sealer manufactured by L. Sonneborn Sons Inc.)

INTERIOR TOILETS, Ceiling tile to be painted with interior rubber base paint (Glidden "Spred" or similar light cream color). Walls adjacent to be left unpainted until determining possible use of so called "Cement Enamel" as wall finish.

CINDER BLOCK, Leave unfinished until determine possible use of so called "Cement Enamel" as wall finish.

INTERIOR DRESSING COURTS, Walls to be painted two (2) coats outside paint light gray color similar to "Glidden Light Gray #159". Two inch plank wall coping to receive same paint. Dressing bench seat to receive two (2) coats porch enamel gray.

NOTE: Dressing court wall sills, plate coping, sheathing and dressing benches to receive thorough painting on all sides and edges with pentachlorophenol before the walls are erected.

**WINDOW SCHEDULE**

MK	No.	CATALOGUE No.	WIDTH	HEIGHT	MULLION	Top Vent	Bottom Vent	Top Screen	Bottom Screen	REMARKS
A	1	4C2 (2 Units)	6'-10 1/2"	2'-9"	Sopera	✓	✓	✓	✓	Obscure Glass
B	2	4C2 (1 Unit)	8'-4 1/2"	2'-9"	none	✓	✓	✓	✓	Obscure Glass
C	1	4C2 (1 Unit)	1'-8 1/2"	2'-9"	none	✓	✓	✓	✓	Obscure Glass

