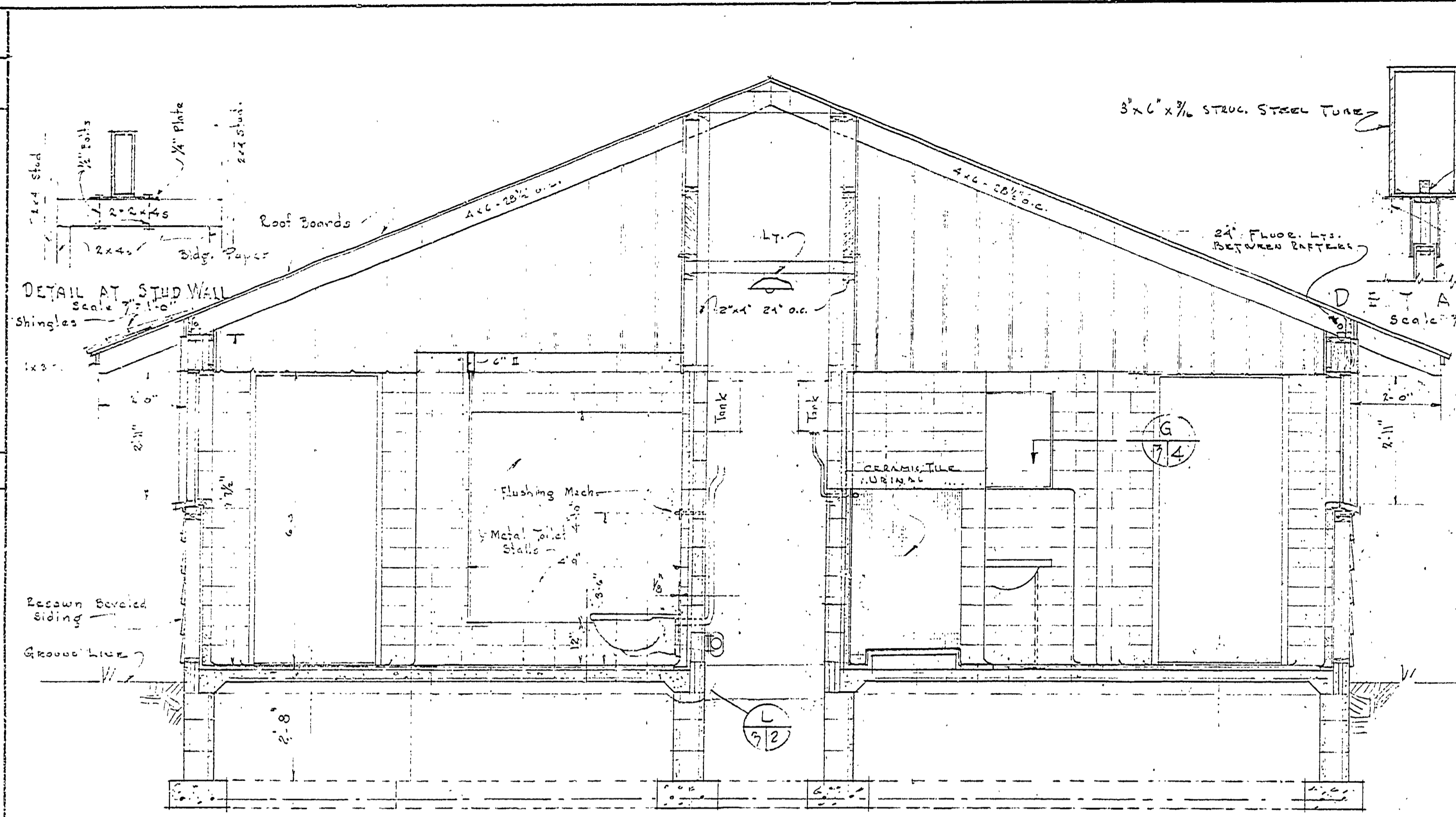
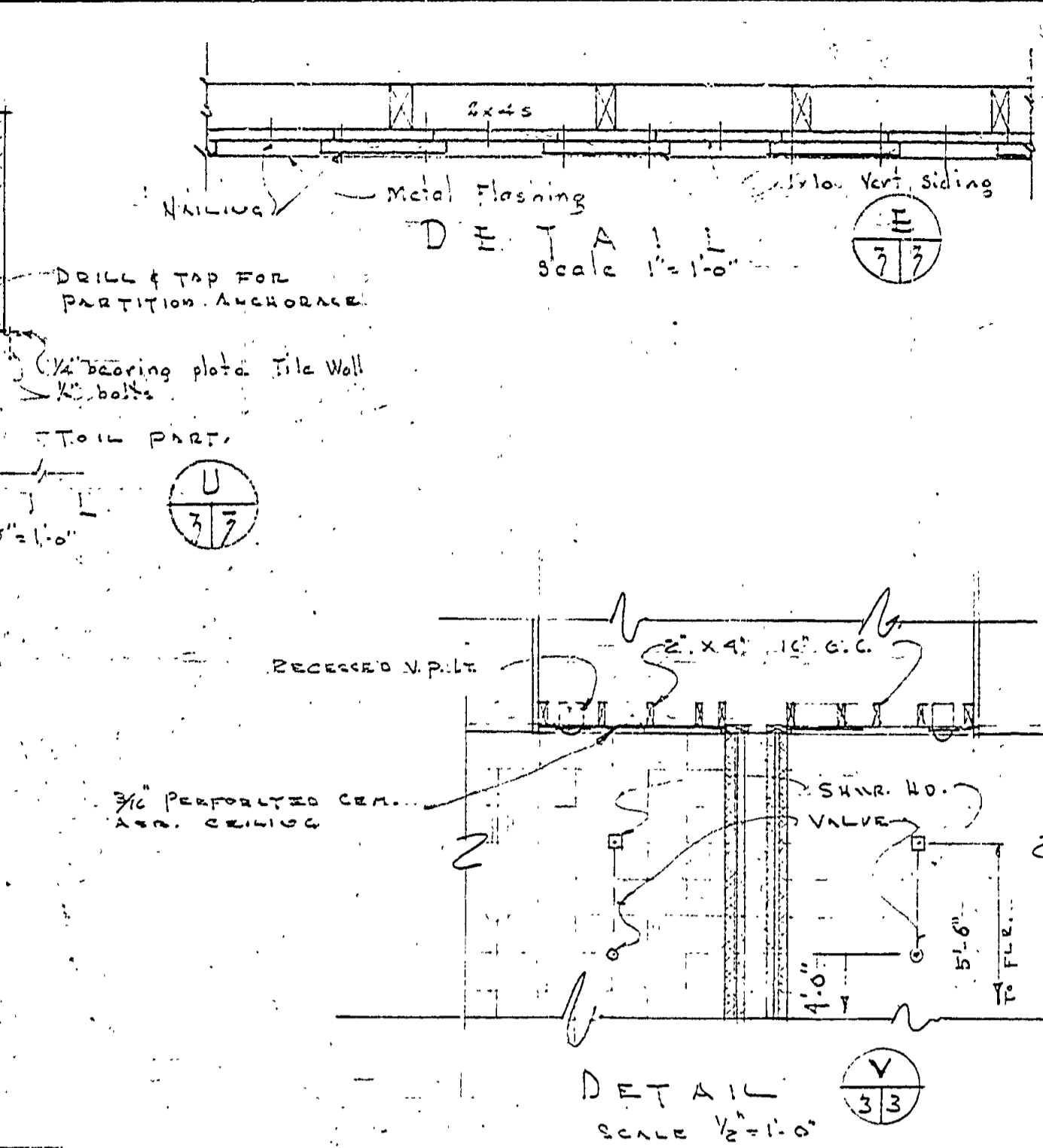


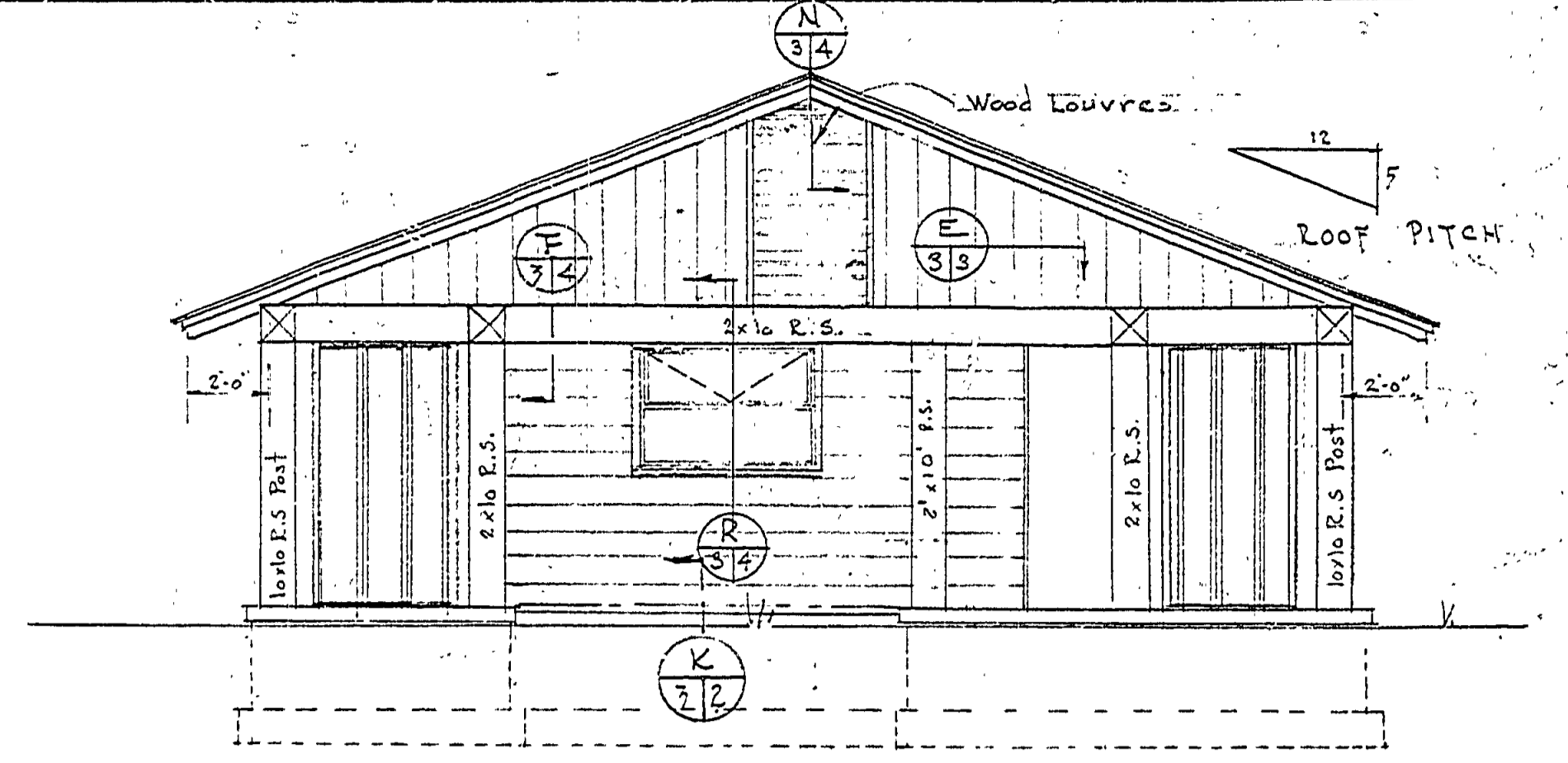
DATE	BY	REVISIONS
1-2-58	J.R.	1
1-2-58	J.R.	2
1-2-58	J.R.	3
1-2-58	J.R.	4



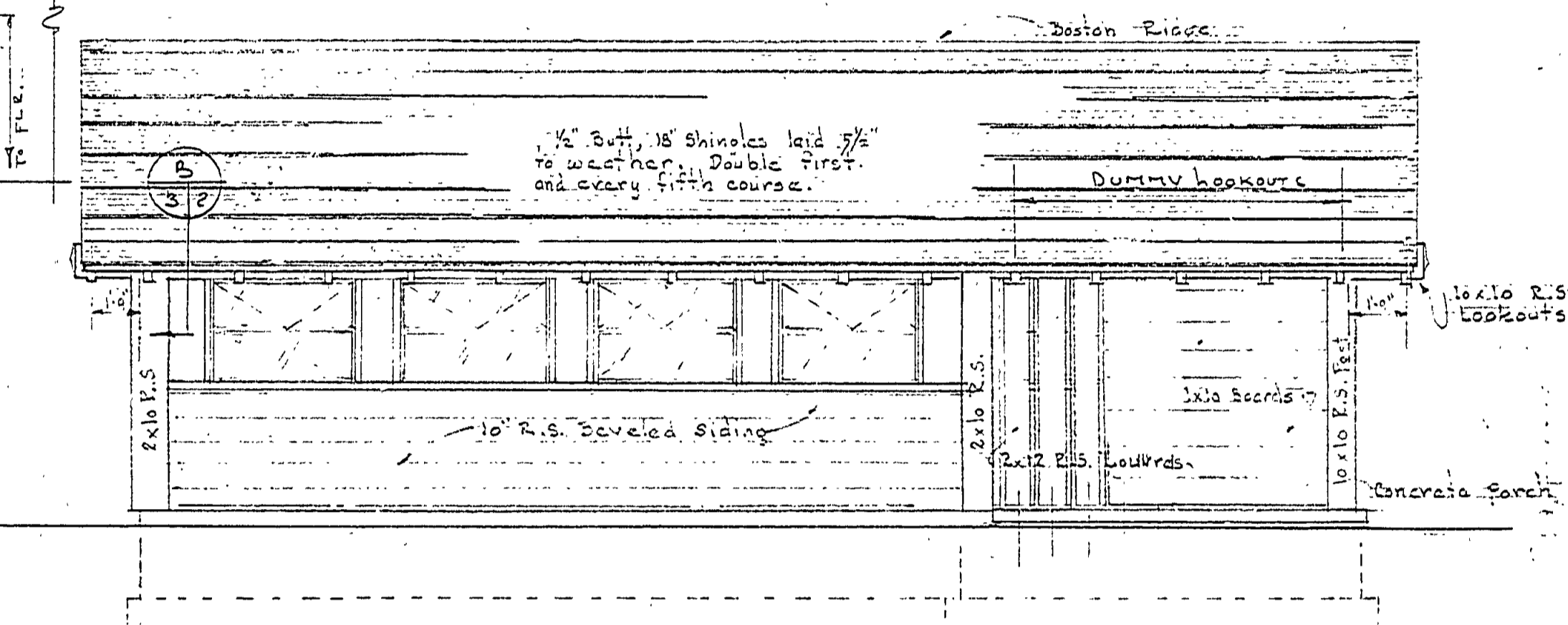
SECTION A-A
THRU TOILET ROOMS
Scale 1/2" = 1'-0"



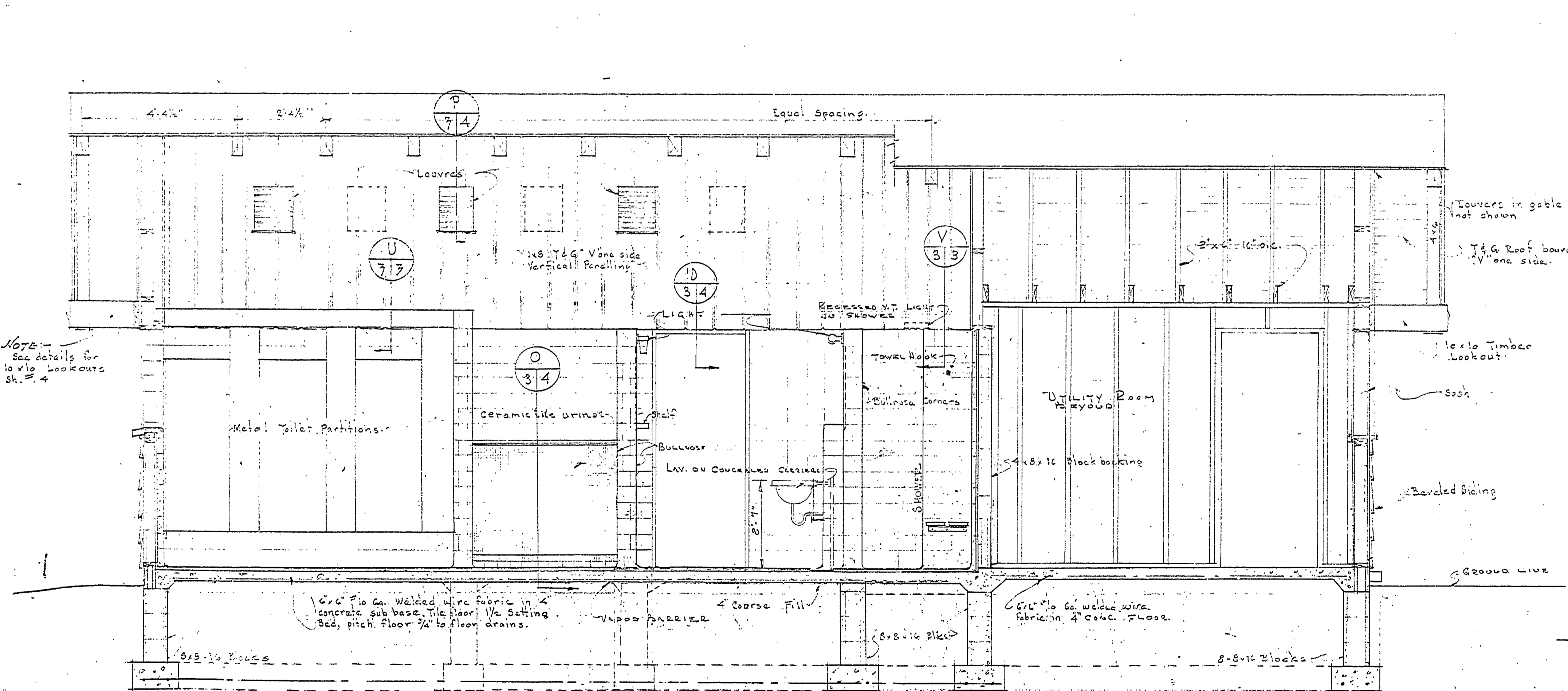
DETAIL
Scale 1/2" = 1'-0"



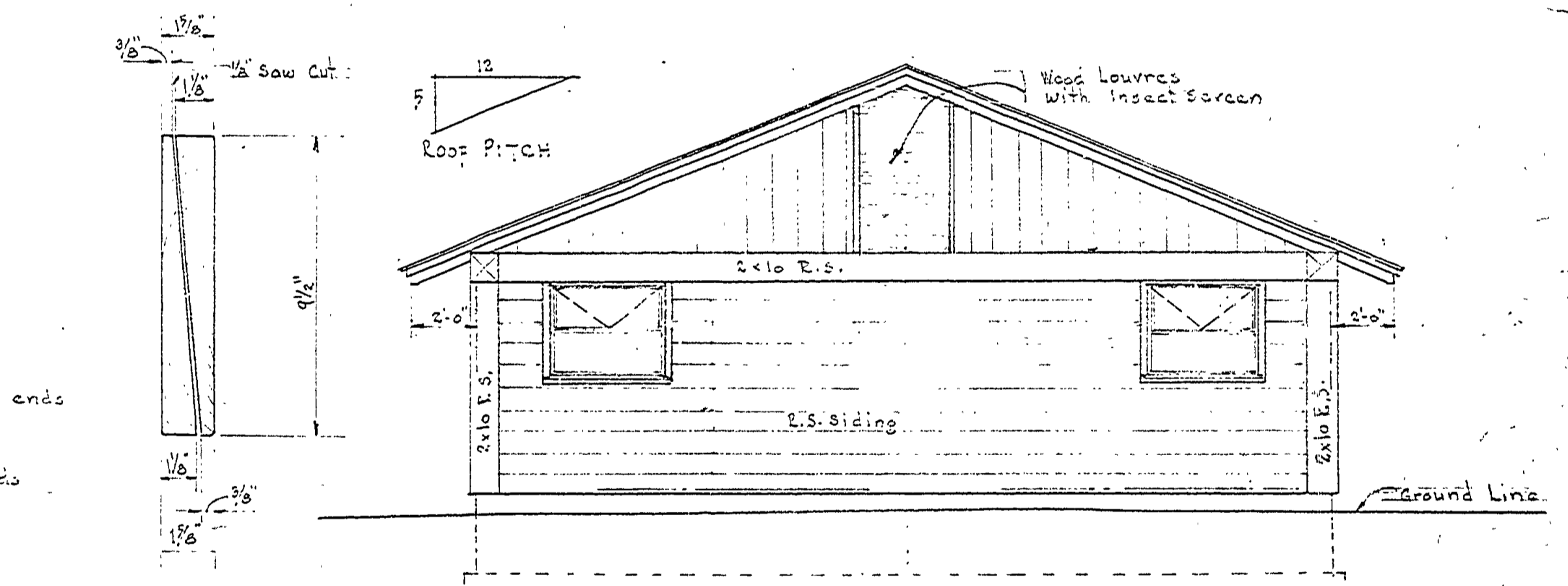
SOUTH ELEVATION
Scale 1/2" = 1'-0"



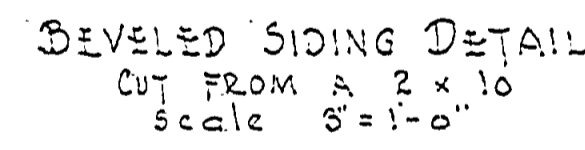
WEST ELEVATION
Scale 1/2" = 1'-0"



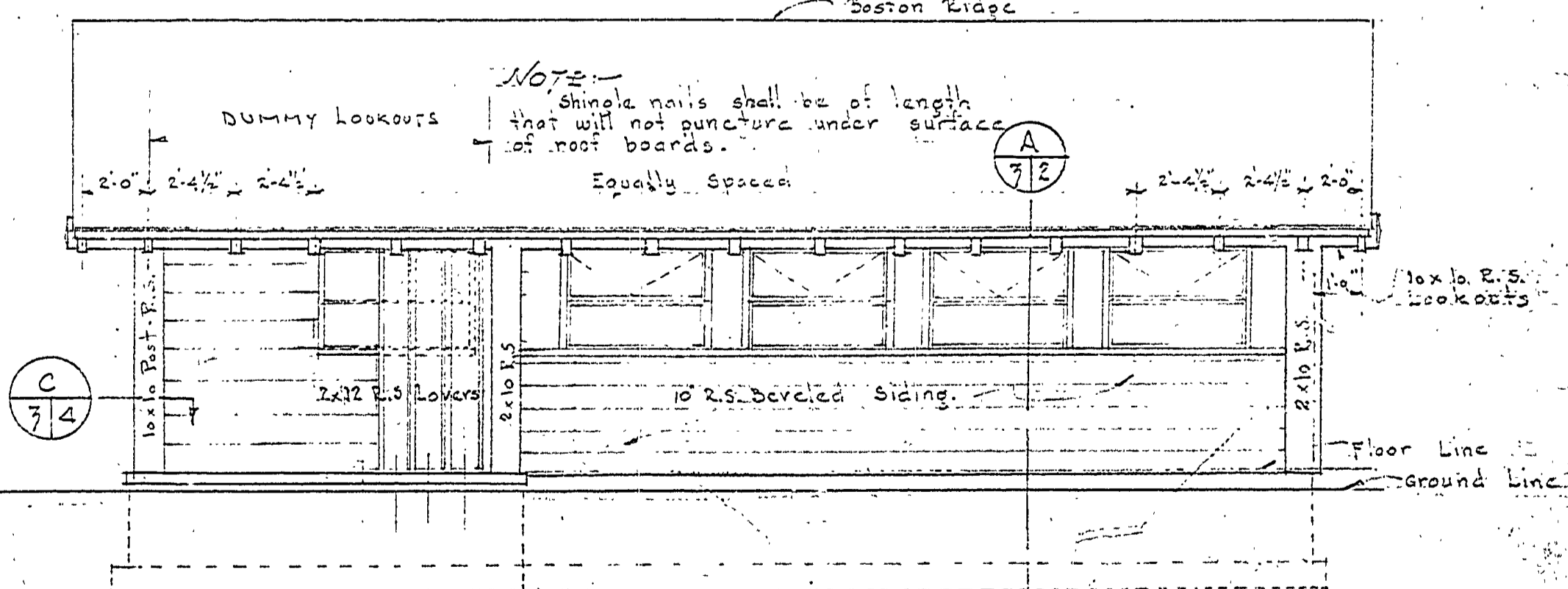
SECTION B-B
LONGITUDINAL SECTION THRU TOILET ROOM
Scale 1/2" = 1'-0"



NORTH ELEVATION
Scale 1/2" = 1'-0"



BEVELED SIDING DETAIL
CUT FROM A 2x10
Scale 3/8" = 1'-0"



EAST ELEVATION
Scale 1/2" = 1'-0"

NOTE:
See details for
10 x 10 Lookouts
Sh. # 4

NOTE:
Shingle nails shall be of length
that will not puncture under surface
of roof boards.
Equally spaced

DRAWN BY: J.M.F.H.
CHECKED BY: M.D.G.
DATE: 5-24-53

REVIEWED BY SECTIONS:
ARCHITECTURAL: J.R. 1-2-58
ENGINEERING: J.R. 1-2-58
LANDSCAPE: J.R. 1-2-58

APPROVED BY: H.C. Mc... ASSISTANT CHIEF IN CHARGE
DATE: 1-1-58

MICHIGAN
DEPARTMENT OF CONSERVATION
PARKS AND RECREATION DIVISION

ELEVATIONS AND SECTIONS		PROD. No. 253-2-61
BRIMLEY STATE PARK TOILET AND SHOWER BUILDING CAMP GROUND 3106 697		SHEET NO. 7 OF 6
		PLAN NO. A-104