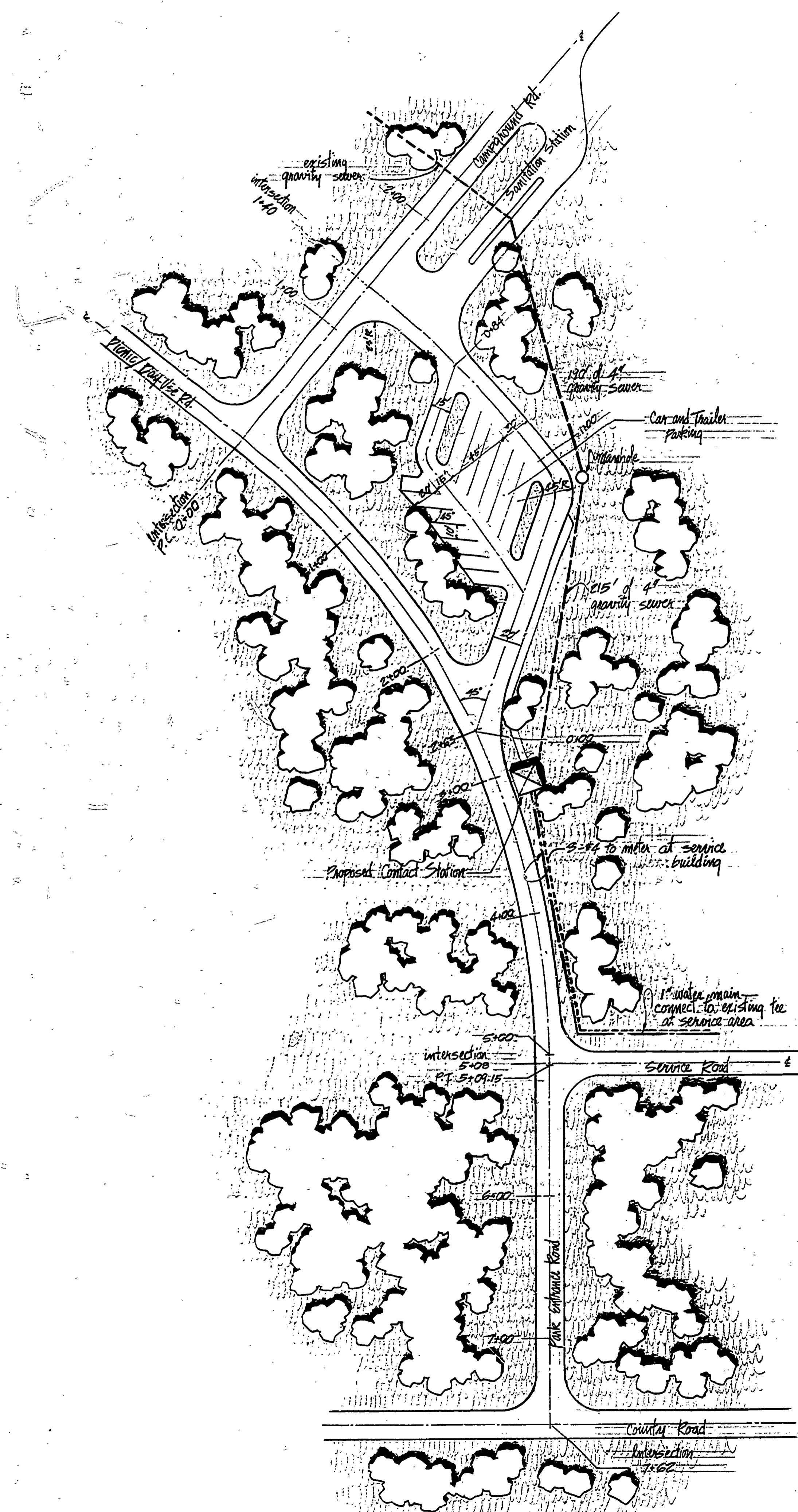


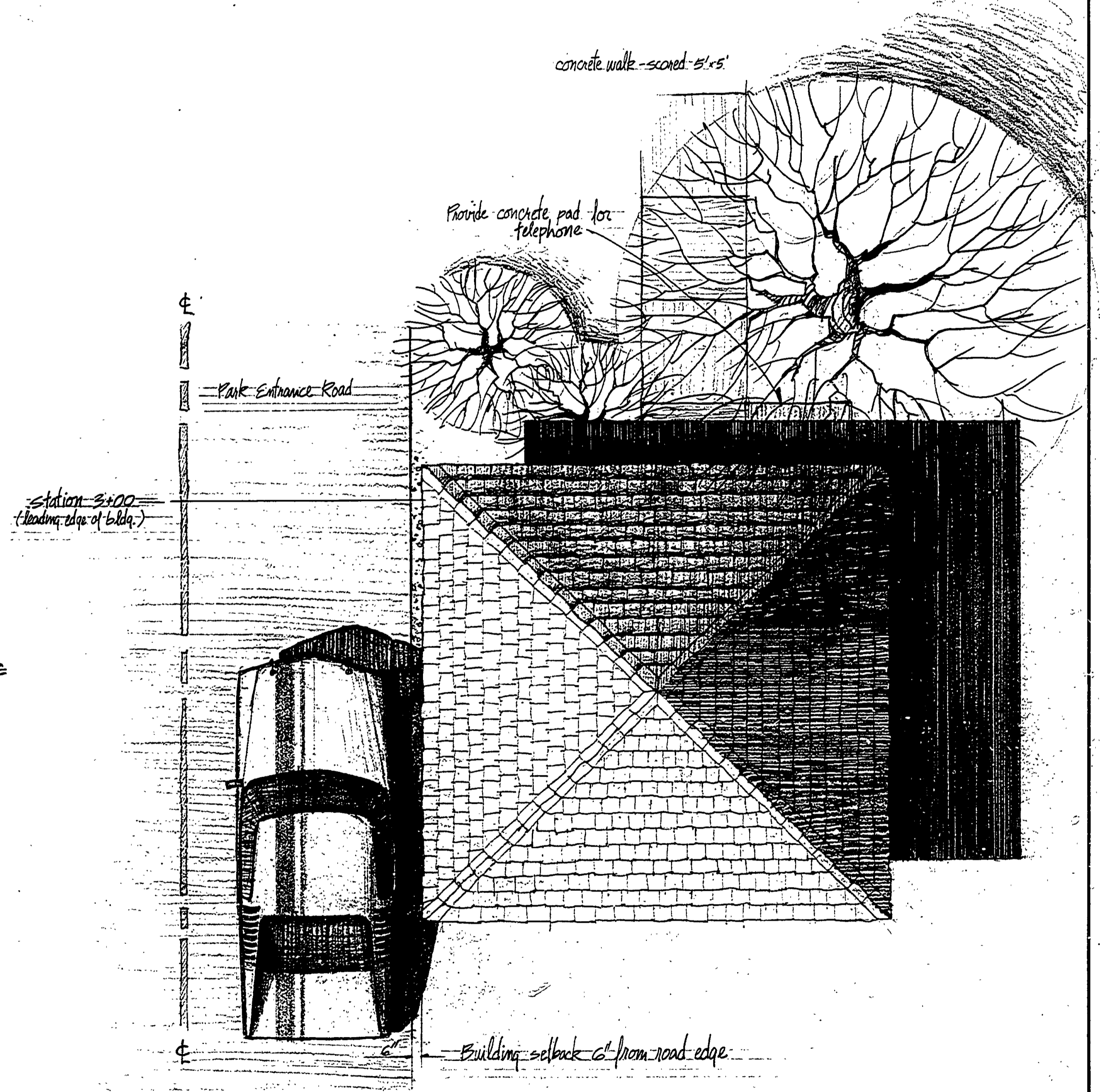
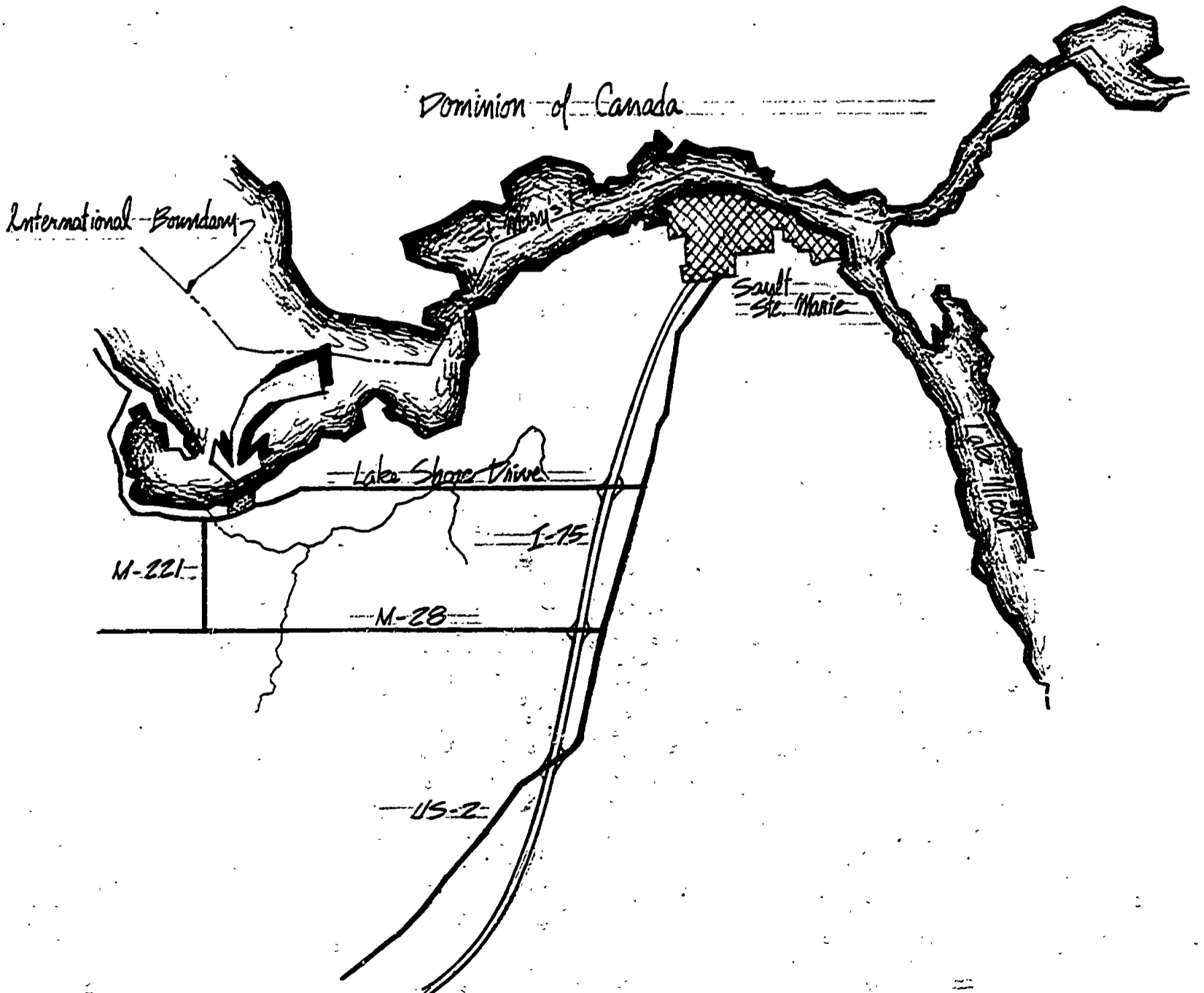
BRIMLEY STATE PARK



Scale 1" = 50'

Construction Notes:
 Grades for 4" quarry sewer & manhole are to be established in the field at the time of building construction.
 Water line to have 4' minimum bury

- 4" sewer (proposed)
- existing sewer
- 1" water (proposed)
- electric (proposed)



Scale 1/4" = 1'-0"

SURVEYED BY	DRAWN BY	NO.	DATE	BY	REVISIONS	NO.	DATE	BY	REVISIONS
	Miles JIMMONS	1.	1/1/69			3.			
	CHEKED BY	2.				4.			

MICHIGAN DEPARTMENT OF NATURAL RESOURCES

Site Plan for Contact Station
SHEET TITLE

AREA OR PARK: Brimley State Park
PROJECT: 1005

BUILDING COMMITTEE APPROVAL	
BY: _____	DATE: _____
RECOMMENDED FOR APPROVAL: W.N.C. 1-19-70	ENGINEERING OR ARCHITECTURAL SUPERVISOR DATE
RECOMMENDED FOR APPROVAL: E.J. Pelt 1-26-70	PROGRAM AND PLAN COORDINATOR DATE
DIVISION/REGION APPROVAL	
BY: Robert O. Doolan 2-2-70	DATE
ENGINEERING DIVISION	
APPROVED: H.C. MacLean 2-3-70	DATE
CHIEF ENGINEER	

PROJECT NO. 1005
SHEET 1 OF 2
PLAN NO. A-100