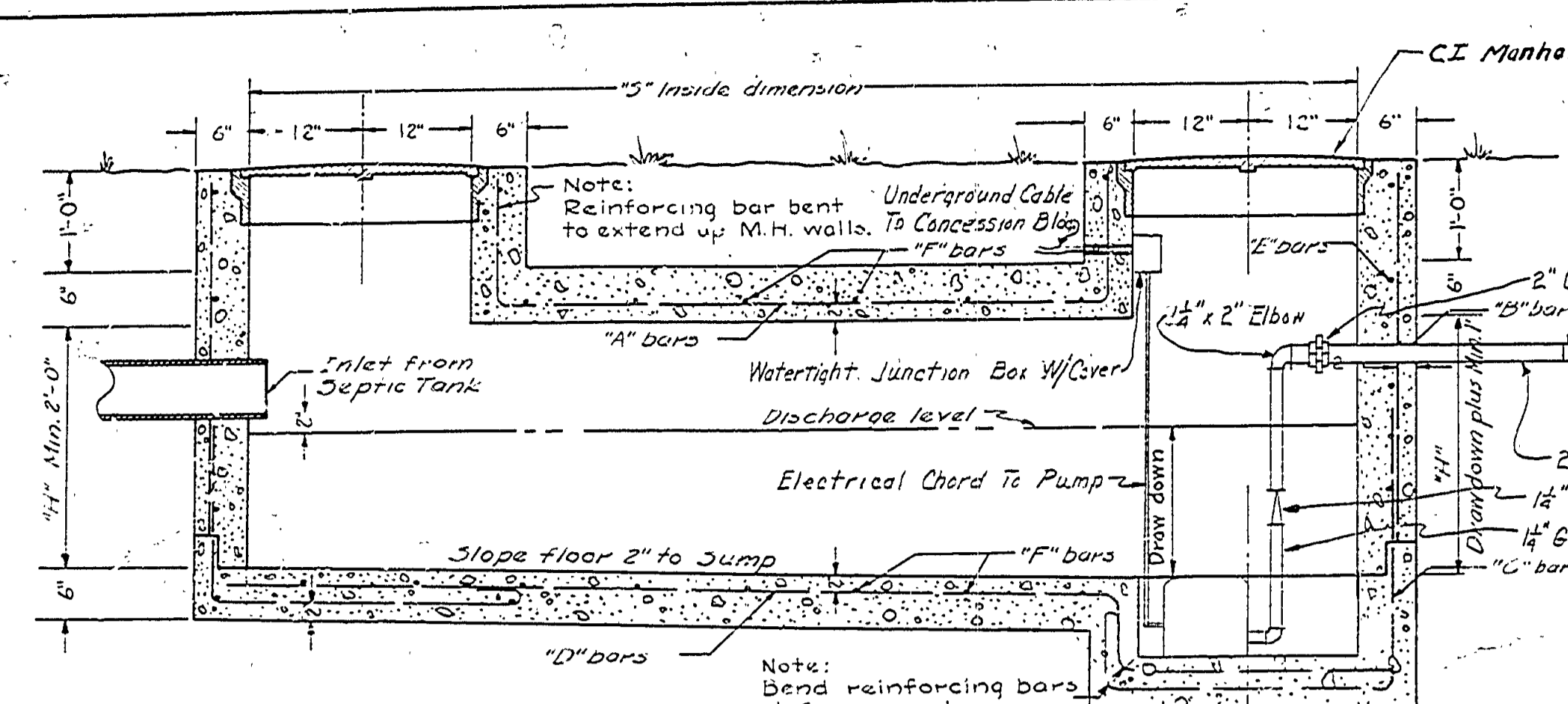
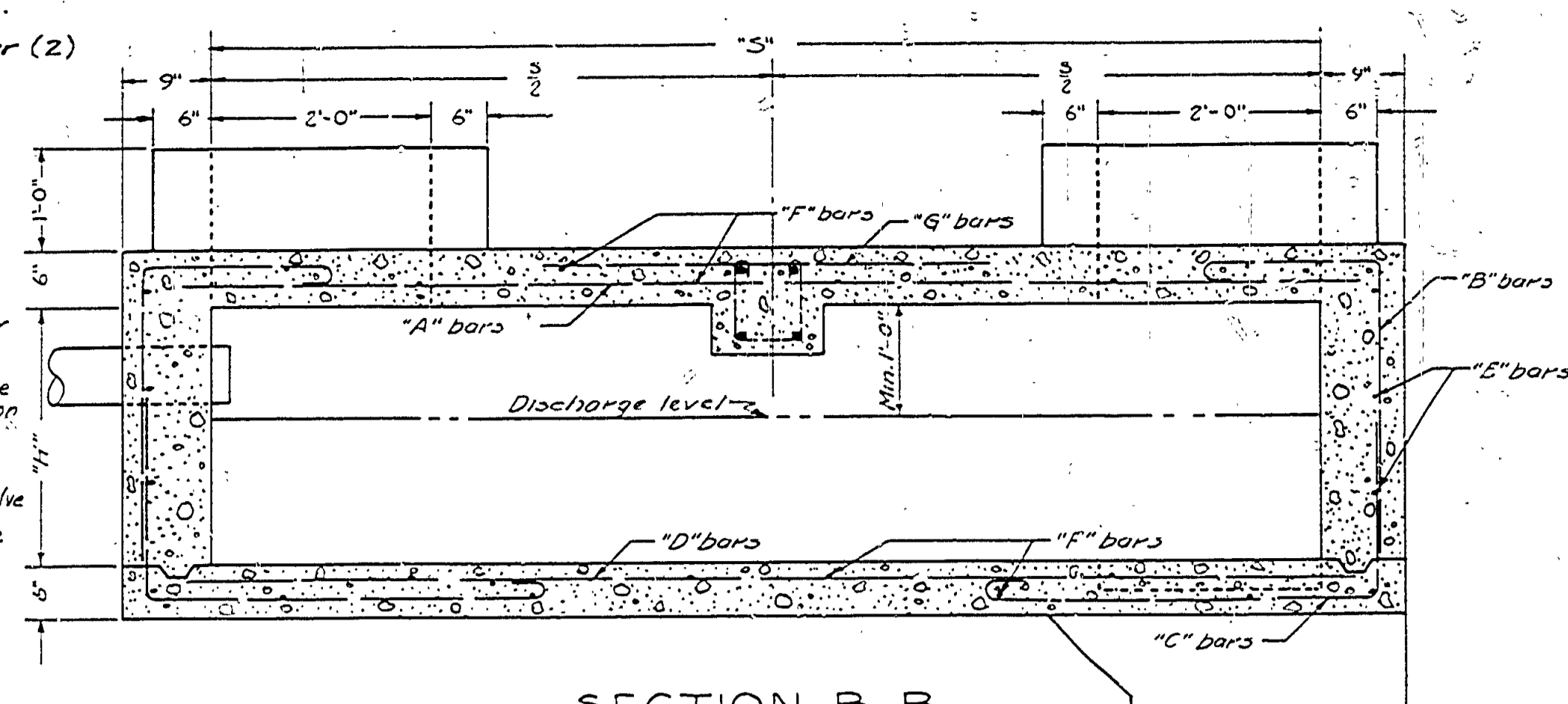


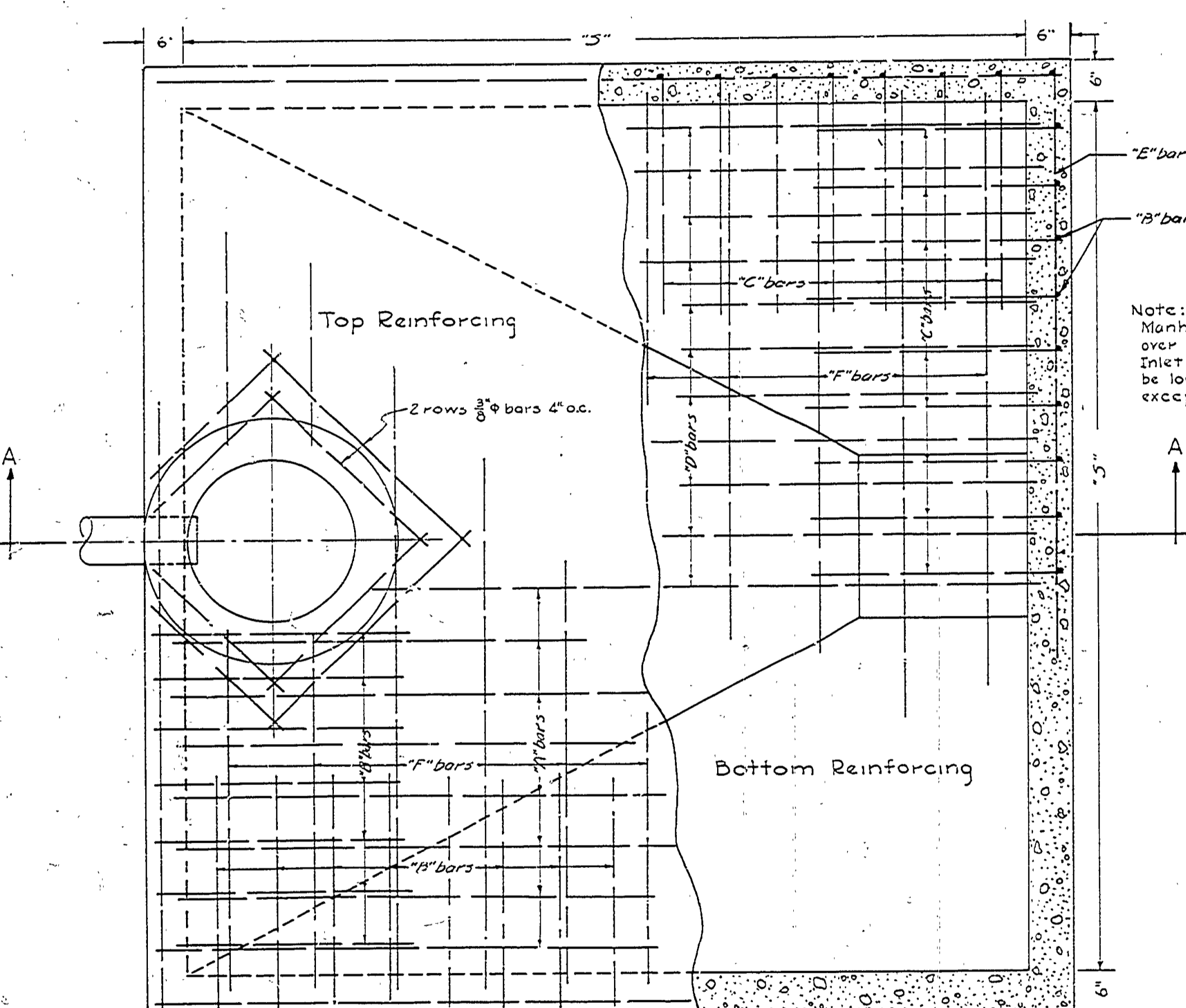
REVISIONS	NO.	DATE	BY
1	1	4/11/53	J.R.
2	2	4/11/53	J.R.
3	3	4/11/53	J.R.
4	4	4/11/53	J.R.
5	5	4/11/53	J.R.
6	6	4/11/53	J.R.



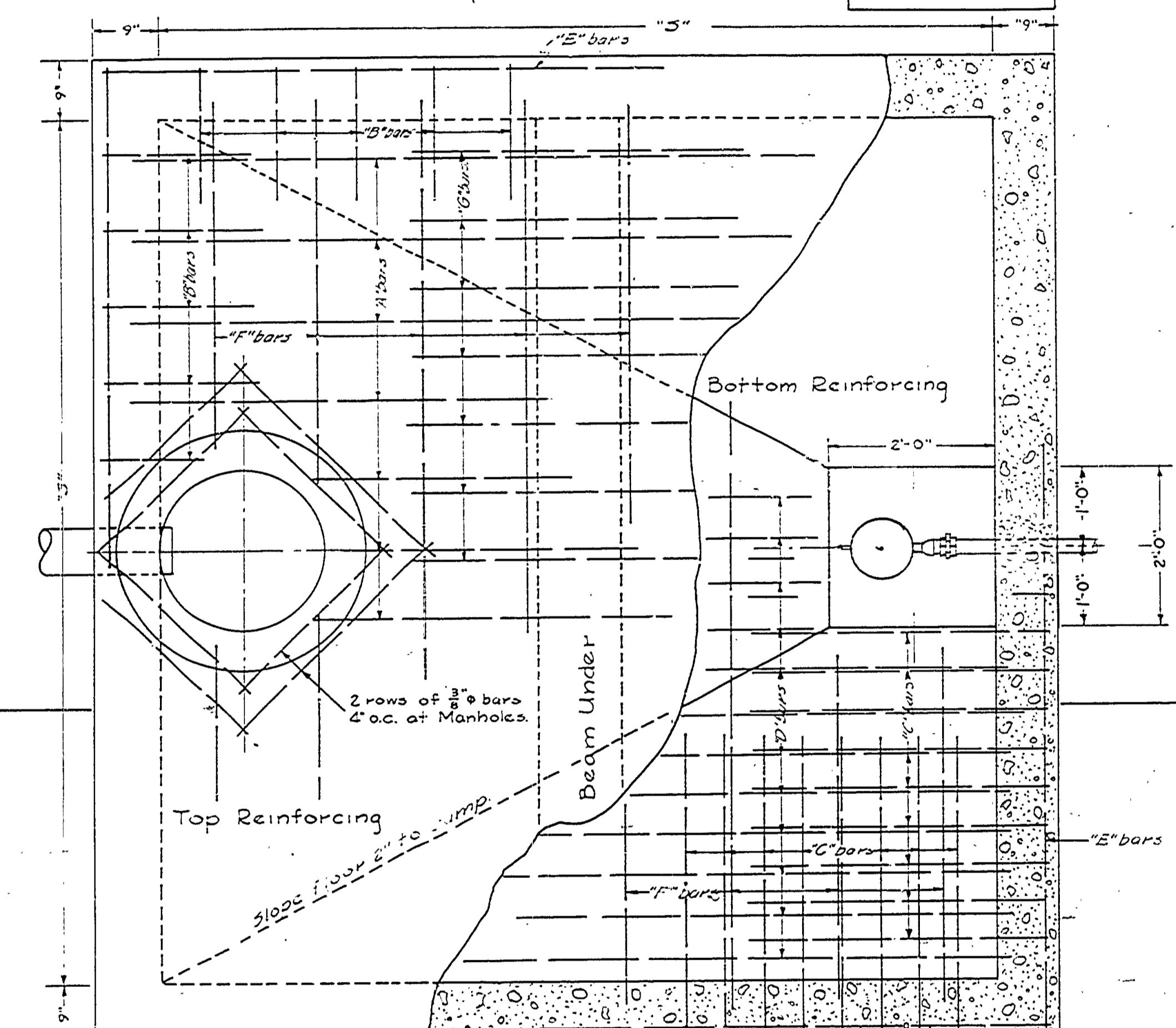
SECTION A-A



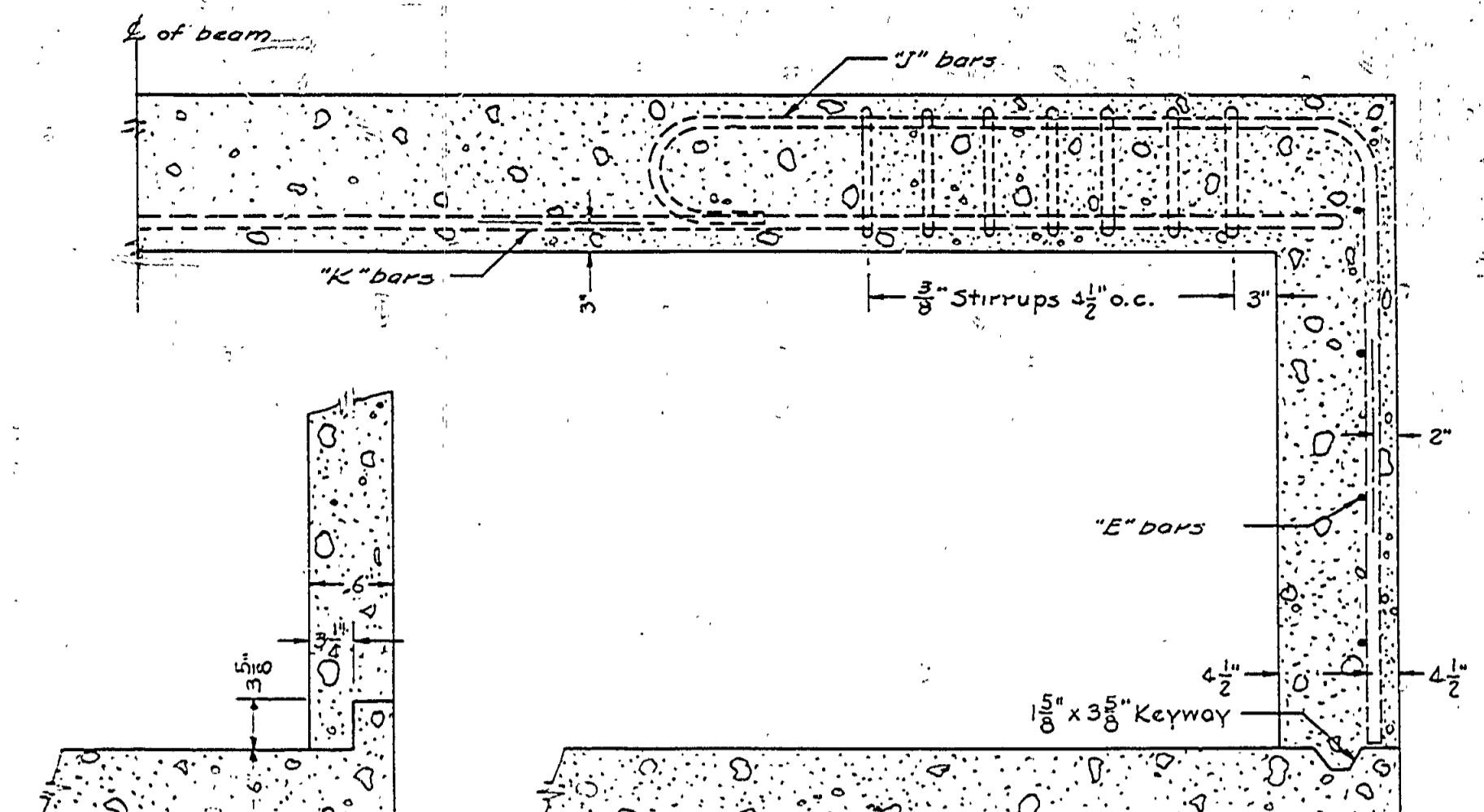
SECTION B-B



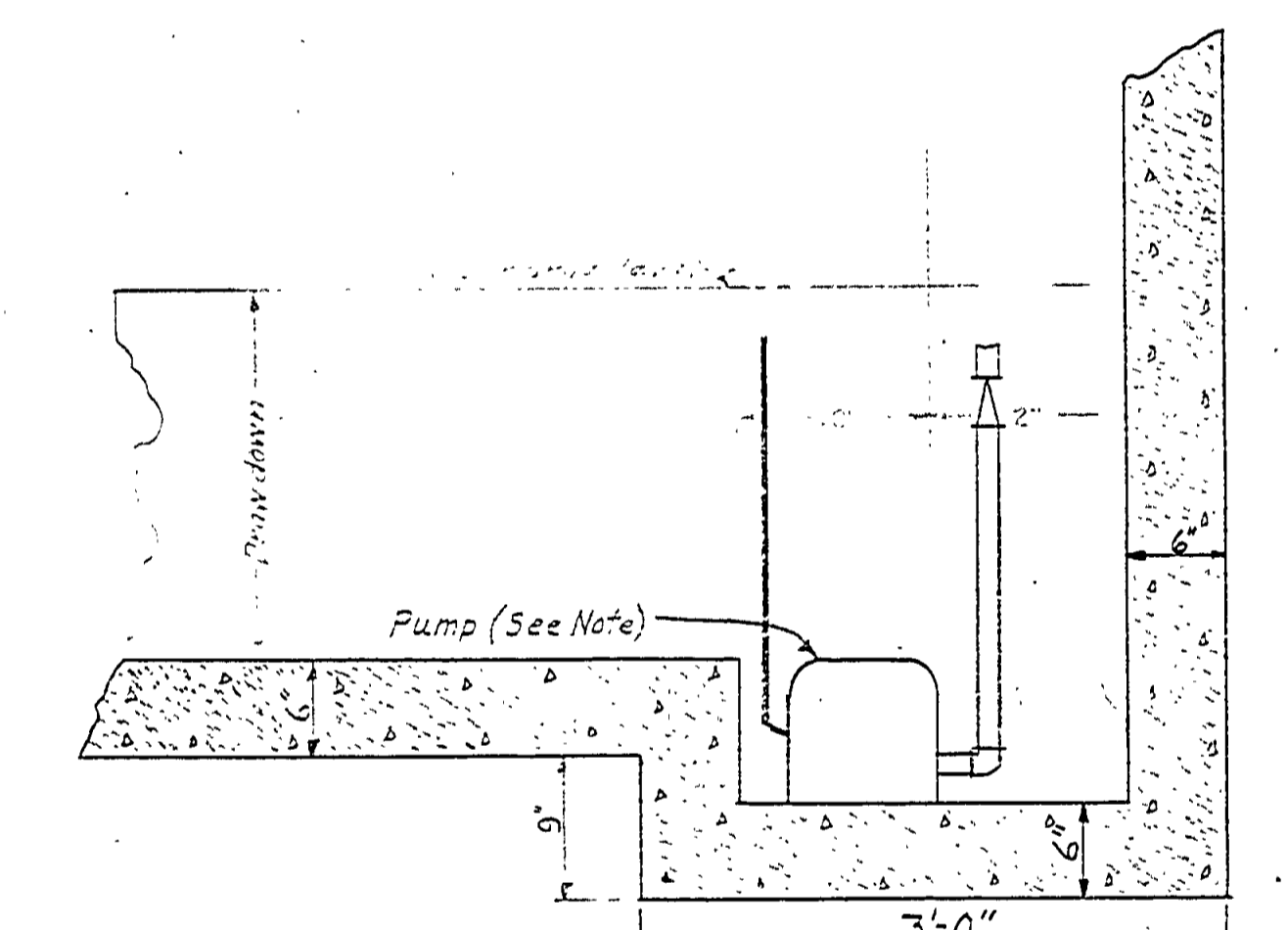
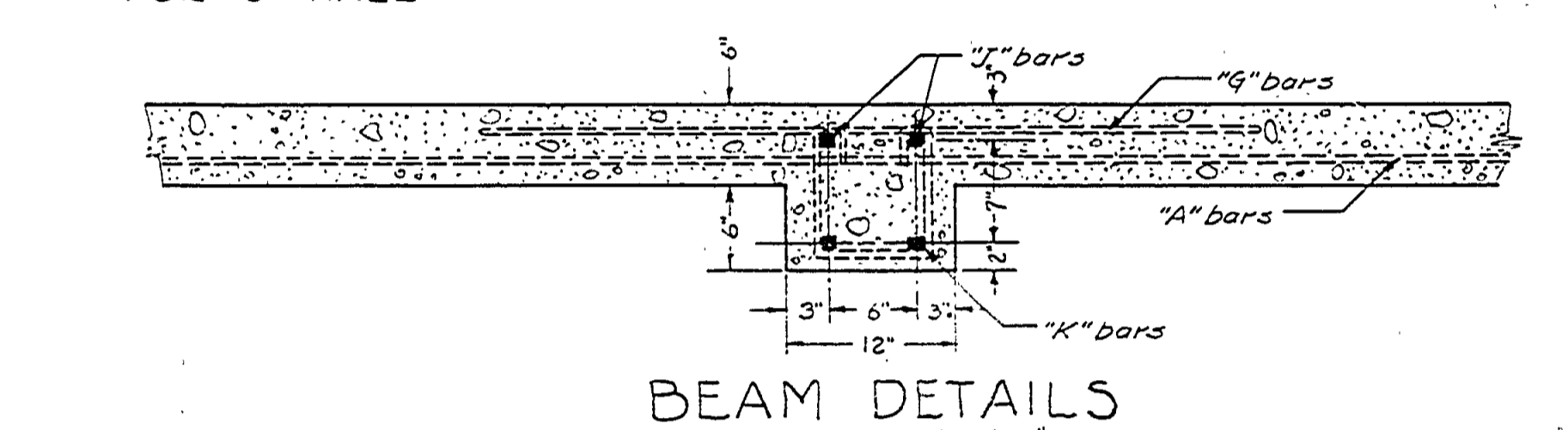
PLAN OF DOSING CHAMBER WITHOUT BEAM
Scale 1/4" = 1'-0"



PLAN OF DOSING CHAMBER WITH BEAM
Scale 1/4" = 1'-0"



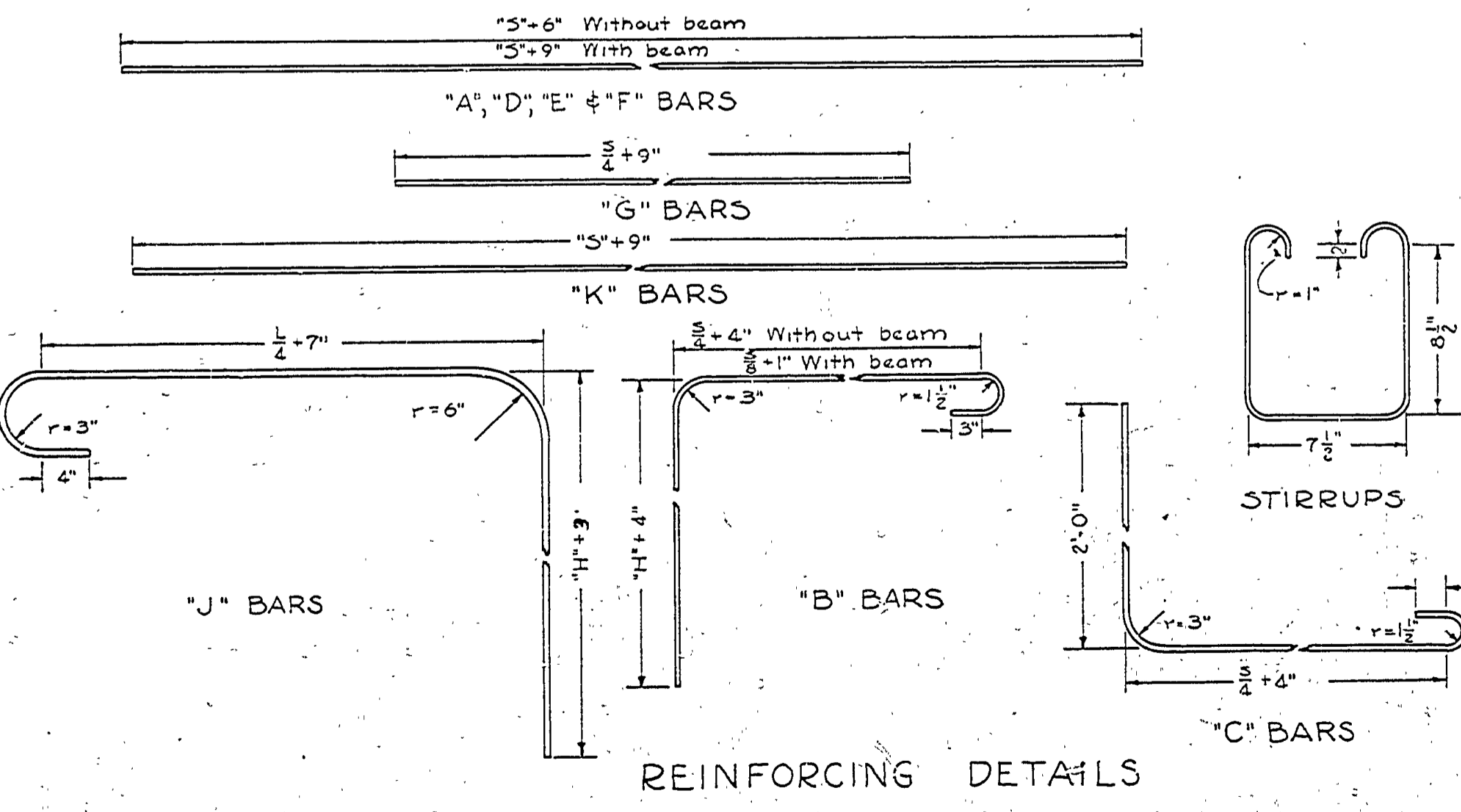
CONSTRUCTION JOINT FOR 6" WALL



SECTION THRU SUMP
Scale 1" = 1'-0"

NOTE: Install Kenco Pump P-105MA 1 1/2" Discharge. Waterproof Junction Box in Dosing Chamber. Run Underground Cable in Same Trench With Vit Sewer Pipe To Concession Sldg. & Connect To Disconnect Switch in Pipe Alley.

SIZE OF TANKS	CAPACITY IN GALLONS					WALL THKNS	BOTTOM THKNS	"A" Bars	"B" Bars	"C" Bars	"D" Bars	"E" Bars	"F" Bars	"G" Bars	"K" Bars	"J" Bars	Stirrups
	13'D.D.	15'D.D.	17'D.D.	19'D.D.	21'D.D.												
8'-0"	520	597	500	670	920	1,195	6"	1/2" @ 12" o.c.	1/2" @ 12" o.c.	1/2" @ 12" o.c.	1/2" @ 12" o.c.	1/2" @ 12" o.c.	1/2" @ 12" o.c.	1/2" @ 12" o.c.	1/2" @ 12" o.c.	1/2" @ 12" o.c.	1/2" @ 12" o.c.
8'-6"	585	675	630	745	1040	1350	6"	1/2" @ 12" o.c.	1/2" @ 12" o.c.	1/2" @ 12" o.c.	1/2" @ 12" o.c.	1/2" @ 12" o.c.	1/2" @ 12" o.c.	1/2" @ 12" o.c.	1/2" @ 12" o.c.	1/2" @ 12" o.c.	1/2" @ 12" o.c.
9'-0"	660	760	710	860	1165	1515	6"	1/2" @ 12" o.c.	1/2" @ 12" o.c.	1/2" @ 12" o.c.	1/2" @ 12" o.c.	1/2" @ 12" o.c.	1/2" @ 12" o.c.	1/2" @ 12" o.c.	1/2" @ 12" o.c.	1/2" @ 12" o.c.	1/2" @ 12" o.c.
9'-6"	730	840	790	960	1300	1665	6"	1/2" @ 12" o.c.	1/2" @ 12" o.c.	1/2" @ 12" o.c.	1/2" @ 12" o.c.	1/2" @ 12" o.c.	1/2" @ 12" o.c.	1/2" @ 12" o.c.	1/2" @ 12" o.c.	1/2" @ 12" o.c.	1/2" @ 12" o.c.
10'-0"		875	1060	1460	1870		6"	1/2" @ 12" o.c.	1/2" @ 12" o.c.	1/2" @ 12" o.c.	1/2" @ 12" o.c.	1/2" @ 12" o.c.	1/2" @ 12" o.c.	1/2" @ 12" o.c.	1/2" @ 12" o.c.	1/2" @ 12" o.c.	1/2" @ 12" o.c.
10'-6"		965	1170	1590	2060		6"	1/2" @ 12" o.c.	1/2" @ 12" o.c.	1/2" @ 12" o.c.	1/2" @ 12" o.c.	1/2" @ 12" o.c.	1/2" @ 12" o.c.	1/2" @ 12" o.c.	1/2" @ 12" o.c.	1/2" @ 12" o.c.	1/2" @ 12" o.c.
11'-0"		1060	1280	1745	2260		9"	1/2" @ 12" o.c.	1/2" @ 12" o.c.	1/2" @ 12" o.c.	1/2" @ 12" o.c.	1/2" @ 12" o.c.	1/2" @ 12" o.c.	1/2" @ 12" o.c.	1/2" @ 12" o.c.	1/2" @ 12" o.c.	1/2" @ 12" o.c.
11'-6"		1160	1400	1910	2470		9"	1/2" @ 12" o.c.	1/2" @ 12" o.c.	1/2" @ 12" o.c.	1/2" @ 12" o.c.	1/2" @ 12" o.c.	1/2" @ 12" o.c.	1/2" @ 12" o.c.	1/2" @ 12" o.c.	1/2" @ 12" o.c.	1/2" @ 12" o.c.
12'-0"		1260	1525	2000	2700		9"	1/2" @ 12" o.c.	1/2" @ 12" o.c.	1/2" @ 12" o.c.	1/2" @ 12" o.c.	1/2" @ 12" o.c.	1/2" @ 12" o.c.	1/2" @ 12" o.c.	1/2" @ 12" o.c.	1/2" @ 12" o.c.	1/2" @ 12" o.c.
12'-6"		1370	1660	2260	2925		9"	1/2" @ 12" o.c.	1/2" @ 12" o.c.	1/2" @ 12" o.c.	1/2" @ 12" o.c.	1/2" @ 12" o.c.	1/2" @ 12" o.c.	1/2" @ 12" o.c.	1/2" @ 12" o.c.	1/2" @ 12" o.c.	1/2" @ 12" o.c.
13'-0"		1480	1790	2440	3160		9"	1/2" @ 12" o.c.	1/2" @ 12" o.c.	1/2" @ 12" o.c.	1/2" @ 12" o.c.	1/2" @ 12" o.c.	1/2" @ 12" o.c.	1/2" @ 12" o.c.	1/2" @ 12" o.c.	1/2" @ 12" o.c.	1/2" @ 12" o.c.
13'-6"		1595	1935	2640	3410		9"	1/2" @ 12" o.c.	1/2" @ 12" o.c.	1/2" @ 12" o.c.	1/2" @ 12" o.c.	1/2" @ 12" o.c.	1/2" @ 12" o.c.	1/2" @ 12" o.c.	1/2" @ 12" o.c.	1/2" @ 12" o.c.	1/2" @ 12" o.c.
14'-0"		1715	2070	2830	3665		9"	1/2" @ 12" o.c.	1/2" @ 12" o.c.	1/2" @ 12" o.c.	1/2" @ 12" o.c.	1/2" @ 12" o.c.	1/2" @ 12" o.c.	1/2" @ 12" o.c.	1/2" @ 12" o.c.	1/2" @ 12" o.c.	1/2" @ 12" o.c.
14'-6"				3030	3935		9"	1/2" @ 12" o.c.	1/2" @ 12" o.c.	1/2" @ 12" o.c.	1/2" @ 12" o.c.	1/2" @ 12" o.c.	1/2" @ 12" o.c.	1/2" @ 12" o.c.	1/2" @ 12" o.c.	1/2" @ 12" o.c.	1/2" @ 12" o.c.
15'-0"				3250	4210		9"	1/2" @ 12" o.c.	1/2" @ 12" o.c.	1/2" @ 12" o.c.	1/2" @ 12" o.c.	1/2" @ 12" o.c.	1/2" @ 12" o.c.	1/2" @ 12" o.c.	1/2" @ 12" o.c.	1/2" @ 12" o.c.	1/2" @ 12" o.c.
15'-6"					4490		9"	1/2" @ 12" o.c.	1/2" @ 12" o.c.	1/2" @ 12" o.c.	1/2" @ 12" o.c.	1/2" @ 12" o.c.	1/2" @ 12" o.c.	1/2" @ 12" o.c.	1/2" @ 12" o.c.	1/2" @ 12" o.c.	1/2" @ 12" o.c.
16'-0"					4780		9"	1/2" @ 12" o.c.	1/2" @ 12" o.c.	1/2" @ 12" o.c.	1/2" @ 12" o.c.	1/2" @ 12" o.c.	1/2" @ 12" o.c.	1/2" @ 12" o.c.	1/2" @ 12" o.c.	1/2" @ 12" o.c.	1/2" @ 12" o.c.



REINFORCING DETAILS