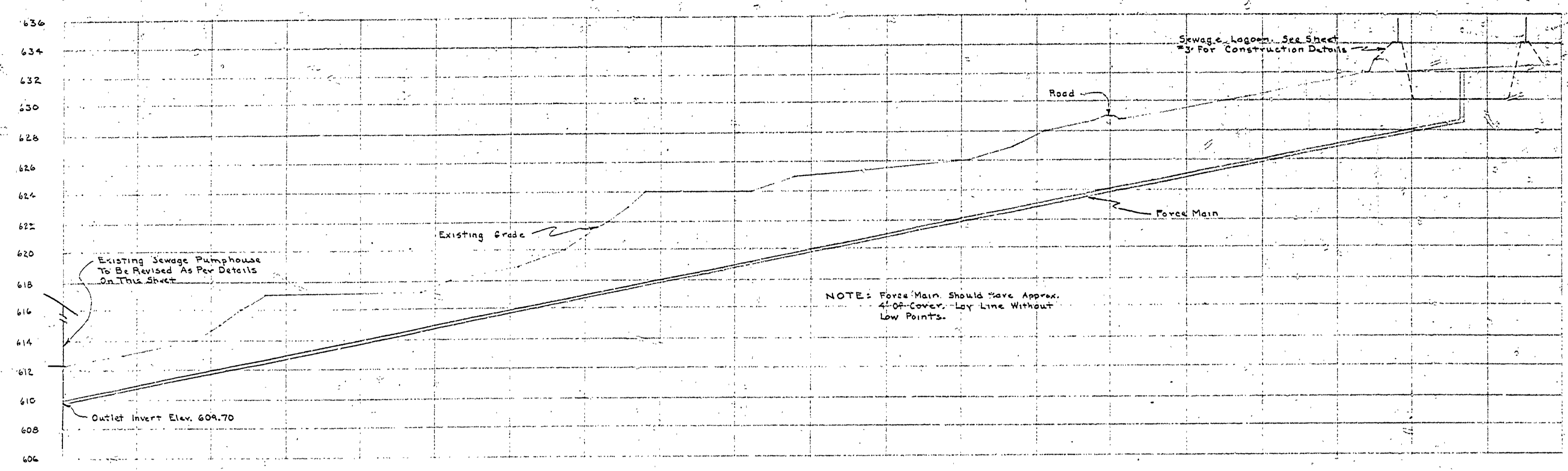
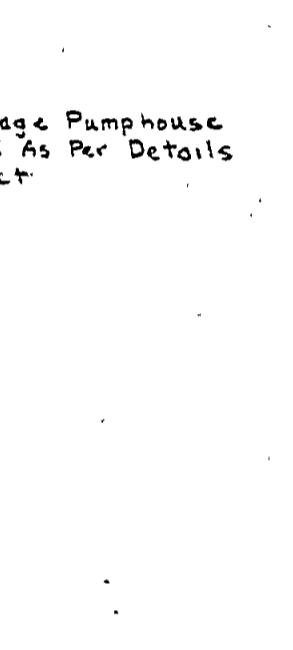
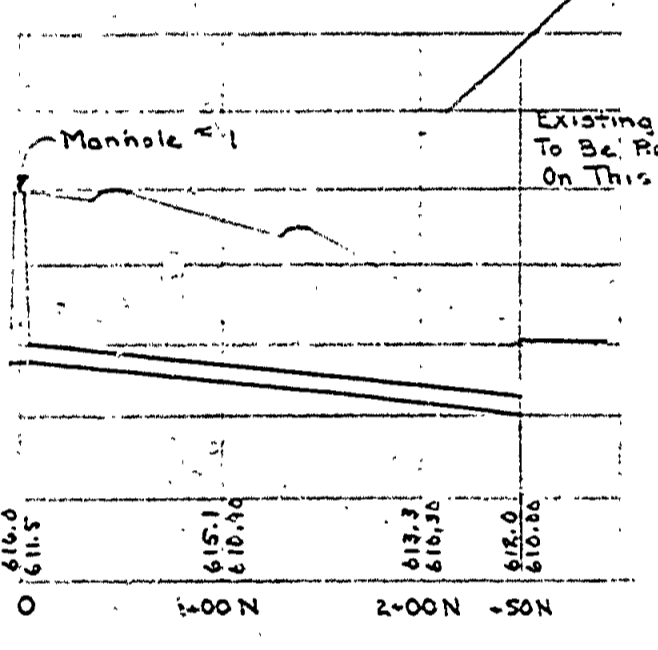
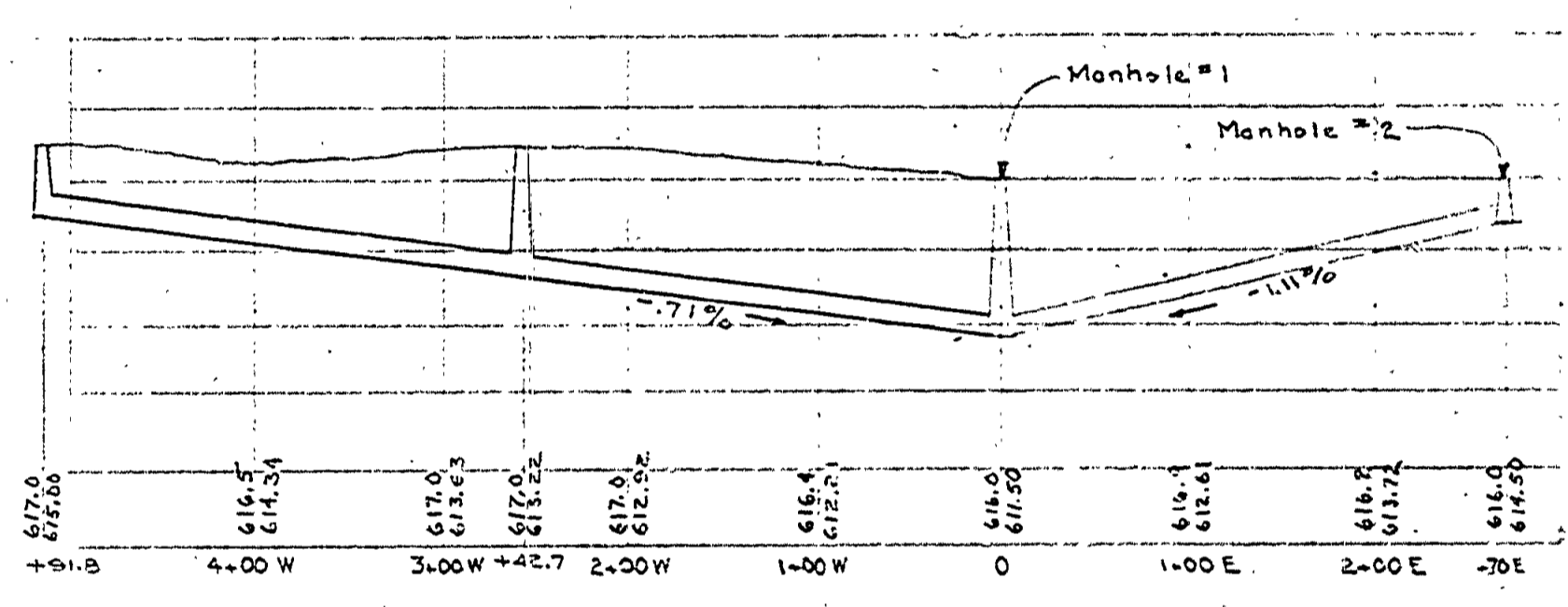
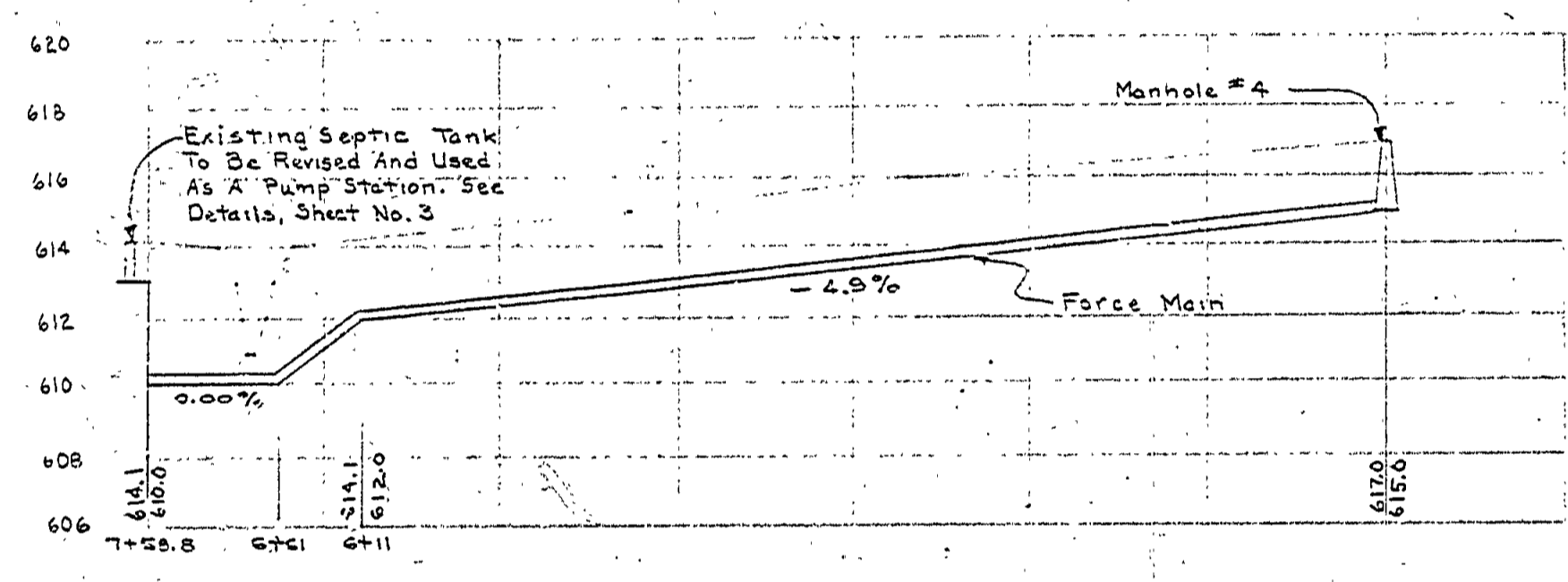


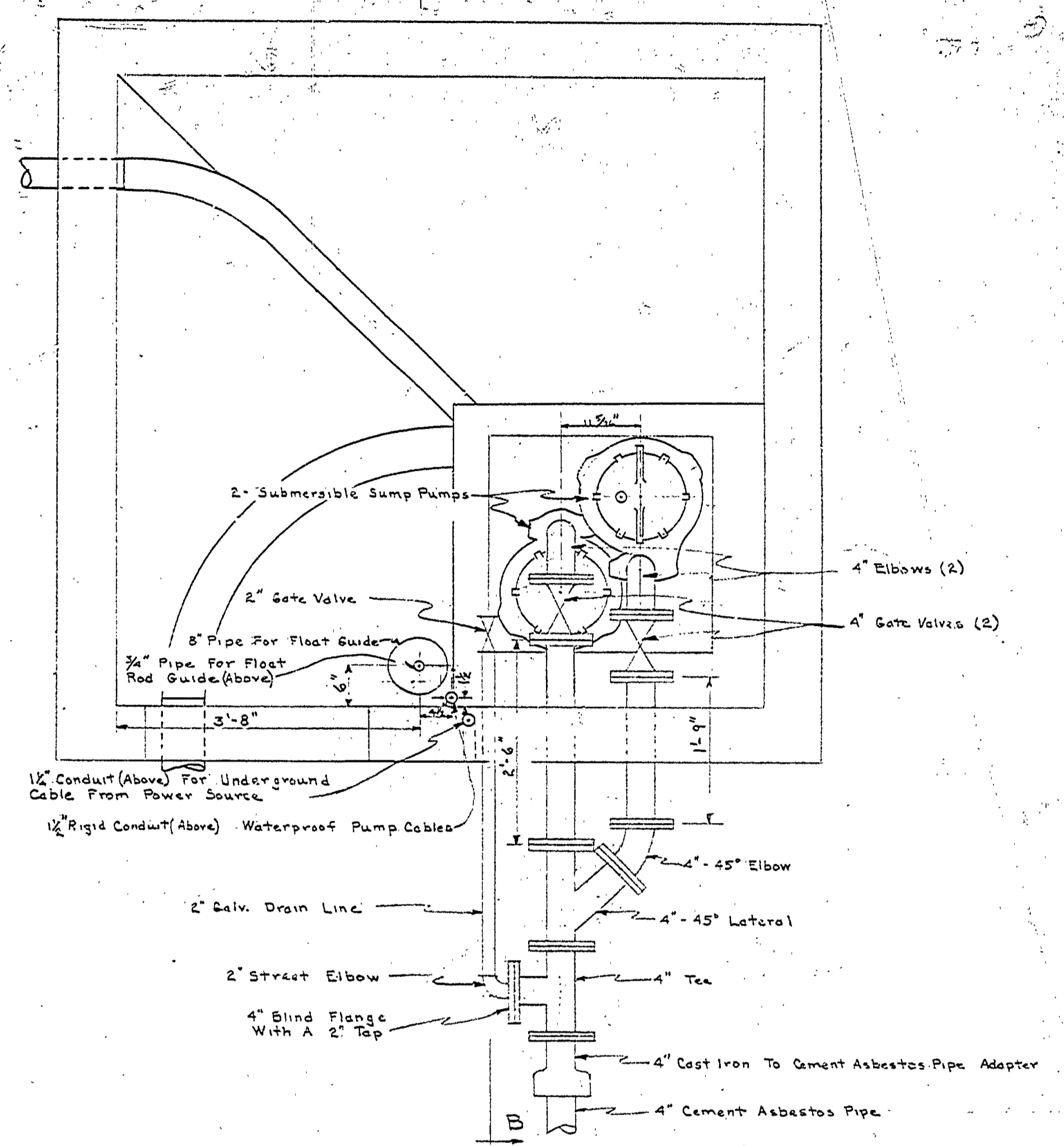
DATE	BY	REVISIONS
11/1/51	J.P.	1. Initial Design
11/1/51	J.P.	2. Revised Design
11/1/51	J.P.	3. Final Design
11/1/51	J.P.	4. Revised Design
11/1/51	J.P.	5. Revised Design
11/1/51	J.P.	6. Revised Design



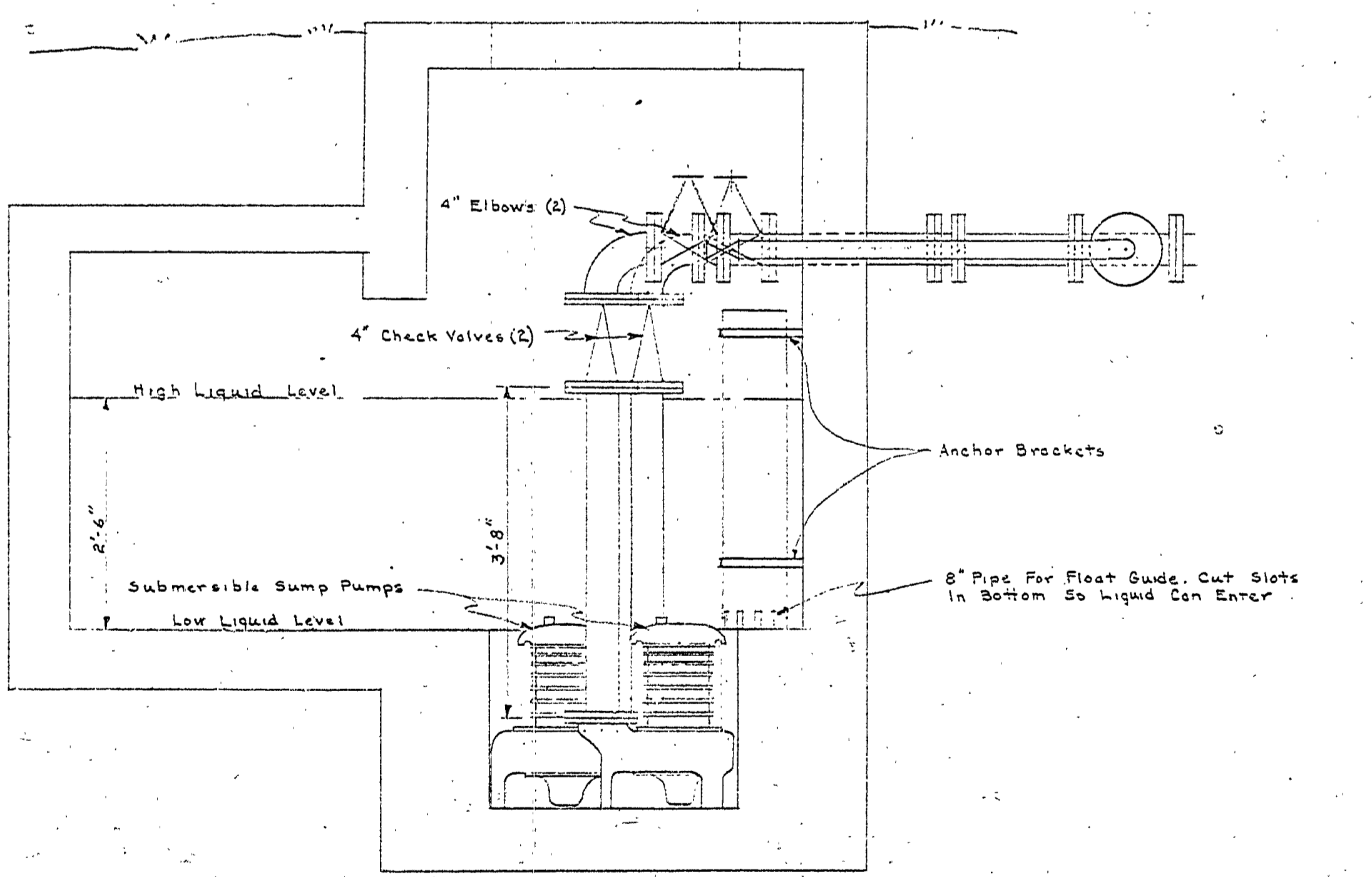
1865'-4" CEMENT ASBESTOS PIPE FORCE MAIN FROM SEWAGE PUMPHOUSE TO SEWAGE LAGOON



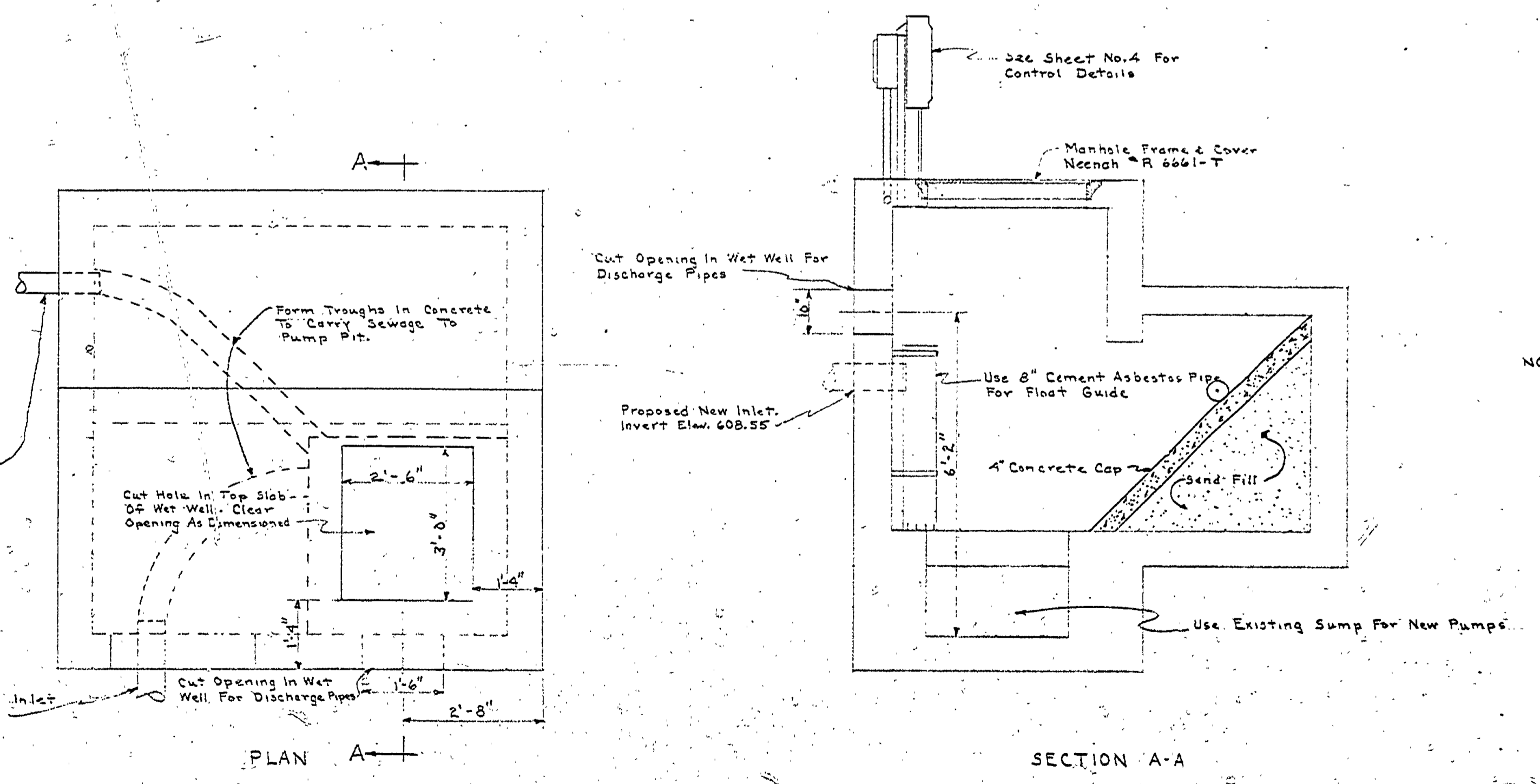
PROFILES
Scale: Hor. 1" = 100'
Ver. 1" = 5'



PLAN WITH TOP REMOVED



MECHANICAL DETAILS FOR SEWAGE PUMPHOUSE
Scale 3/4" = 1'-0"



STRUCTURAL REVISION DETAILS FOR SEWAGE PUMPHOUSE
Scale 1/4" = 1'-0"

NOTES: Existing Structure Above Grade Is To Be Removed. Power For Electric Control & Switch Pedestal Is To Come From T & S Slab. Be Sure Float Rod Guide Is Plumb & Straight. Pour Concrete Around 8" Float Guide. After Running 2" Galv. Pipe From Bottom of Float Guide To Edge of Pump Pit. New Bevel Sides Ave. To Prevent Solids From Settling Except At Pump Pit.