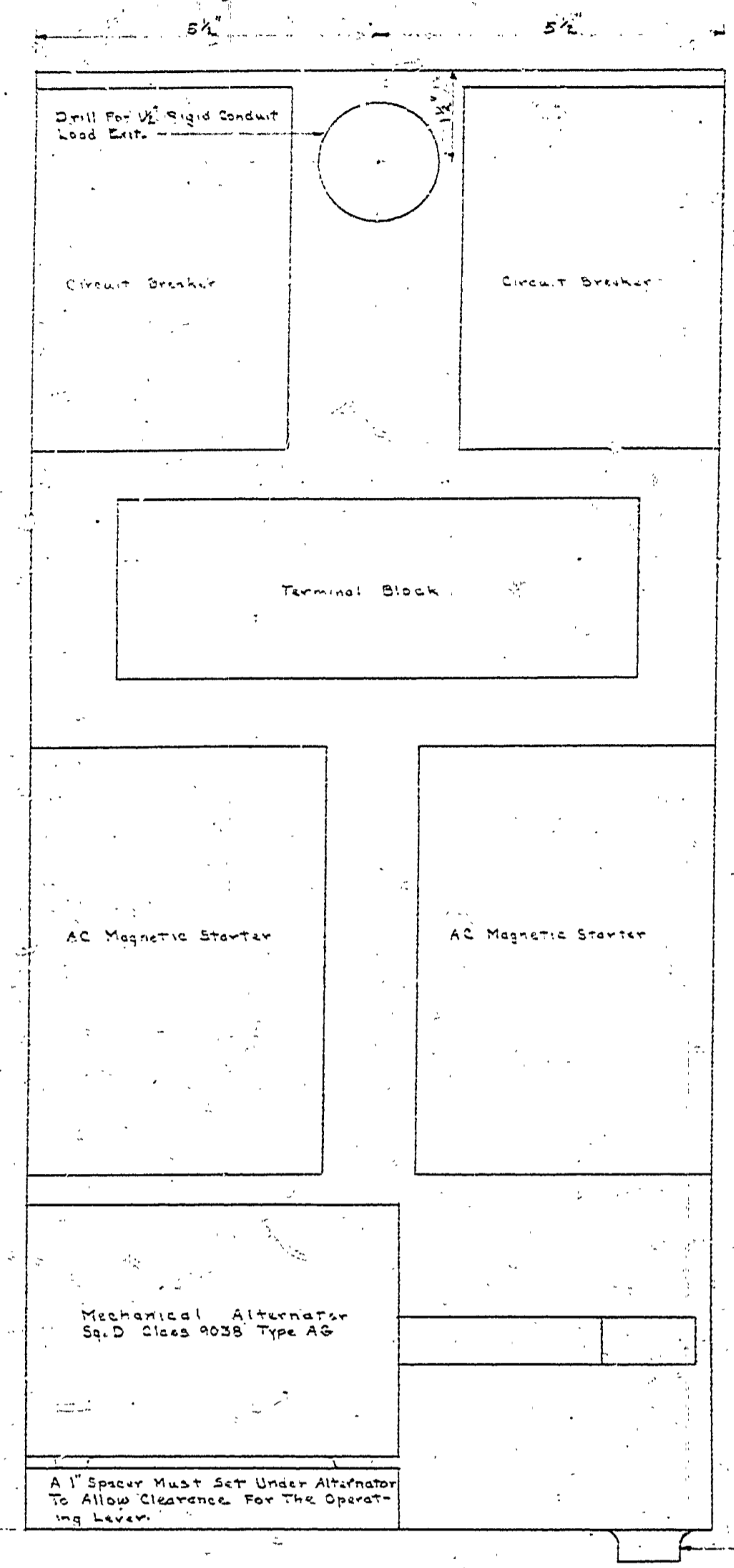


NO.	DATE	BY	REVISIONS
1.			
2.			
3.			
4.			
5.			
6.			

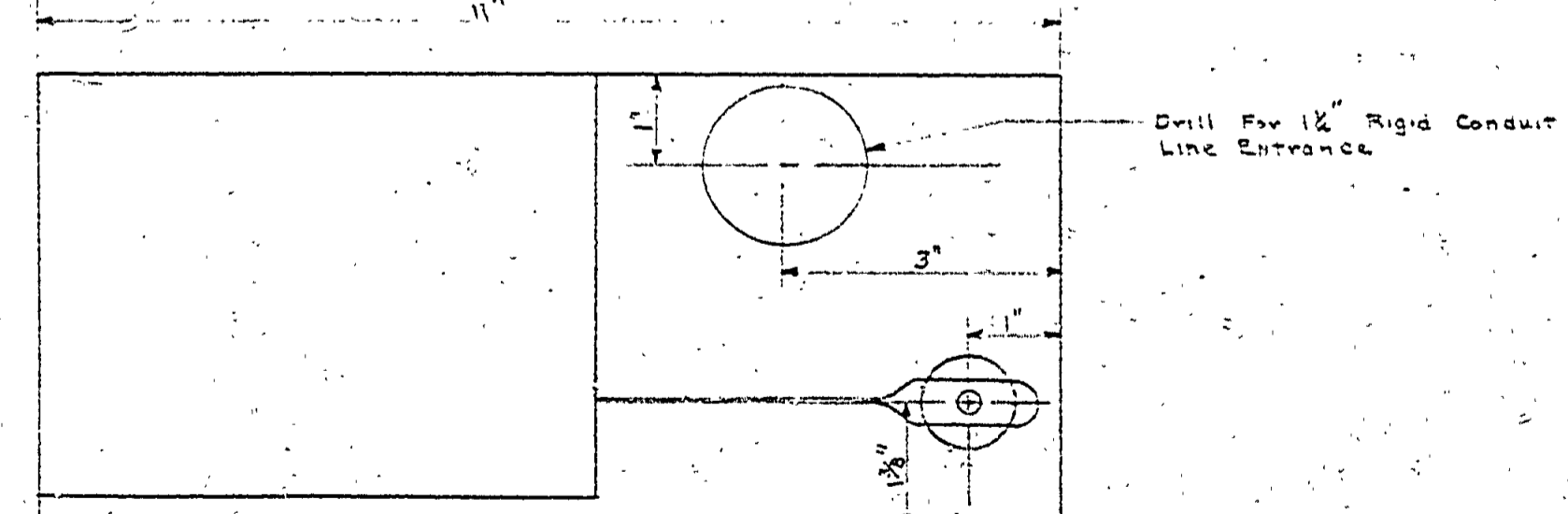
APPROVED BY
H.C.M.
 ASSISTANT CHIEF IN CHARGE
 OF DESIGN DATE 4/21/60

REVIEWED BY SECTIONS
 ARCHITECTURAL: *J.R.*
 ENGINEERING: *J.R.*
 LANDSCAPE: *J.R.*

DRAWN BY: *B.H.G.*
 CHECKED BY: *E.J.P.*
 DATE: 10 March, 1960

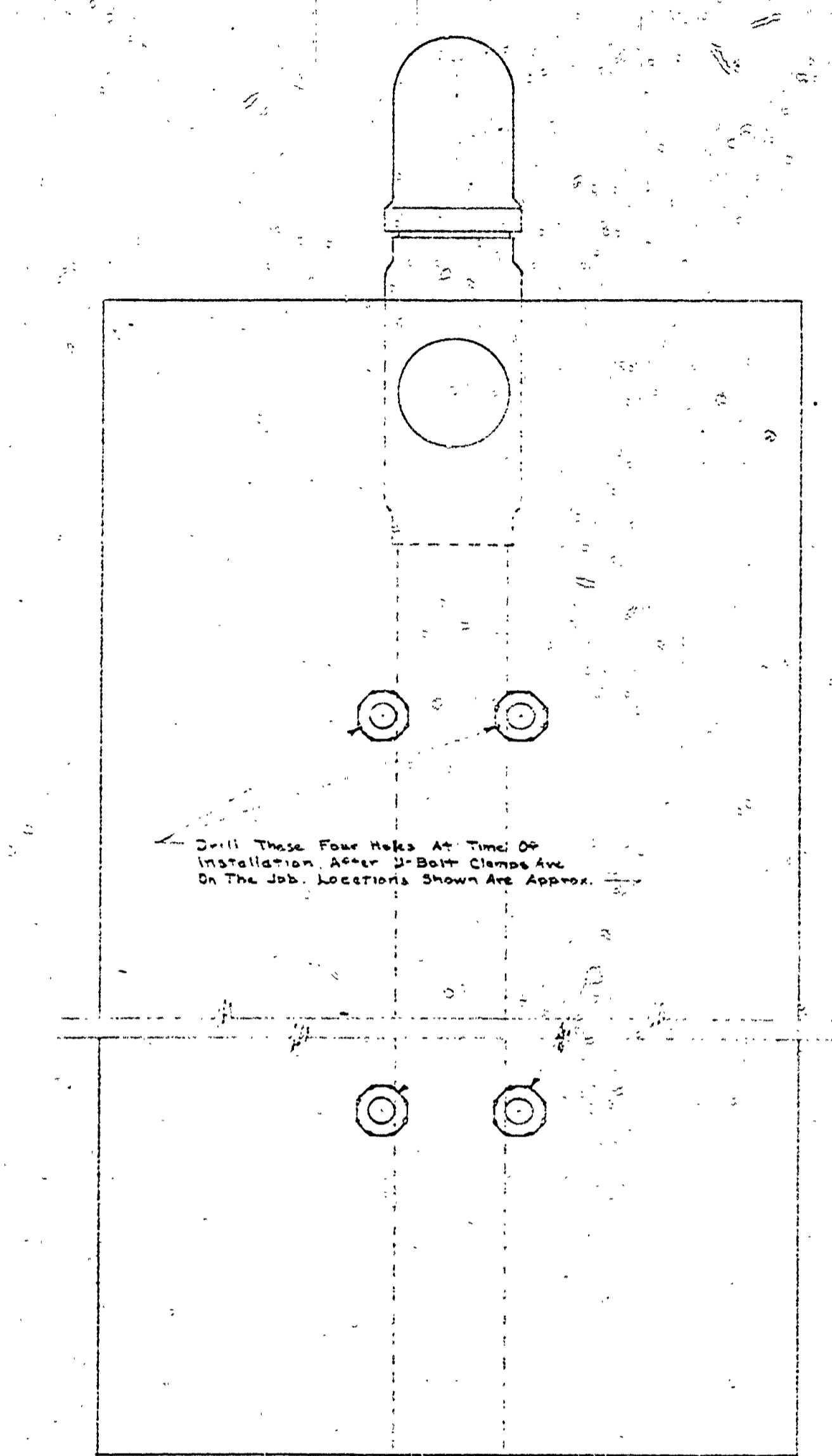


FRONT WITH COVER REMOVED

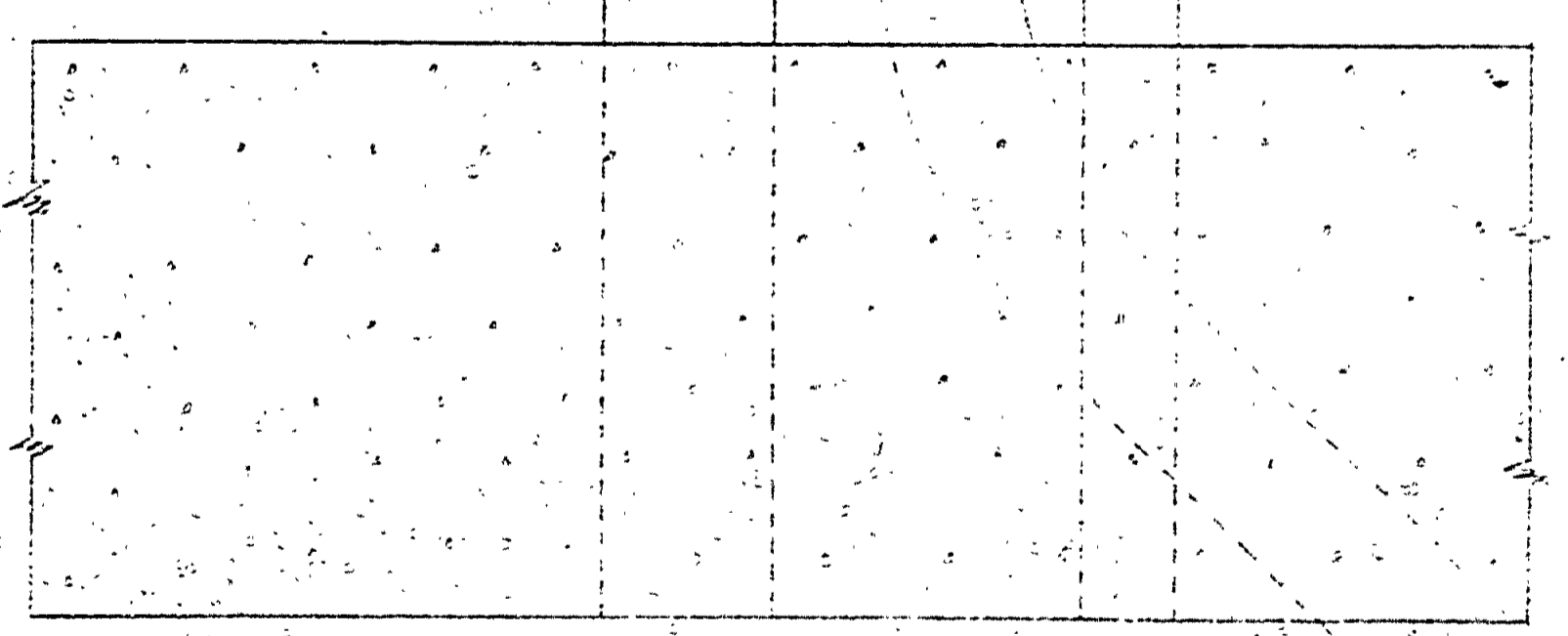


SECTION A-A

CONTROL FOR DUAL PUMPS

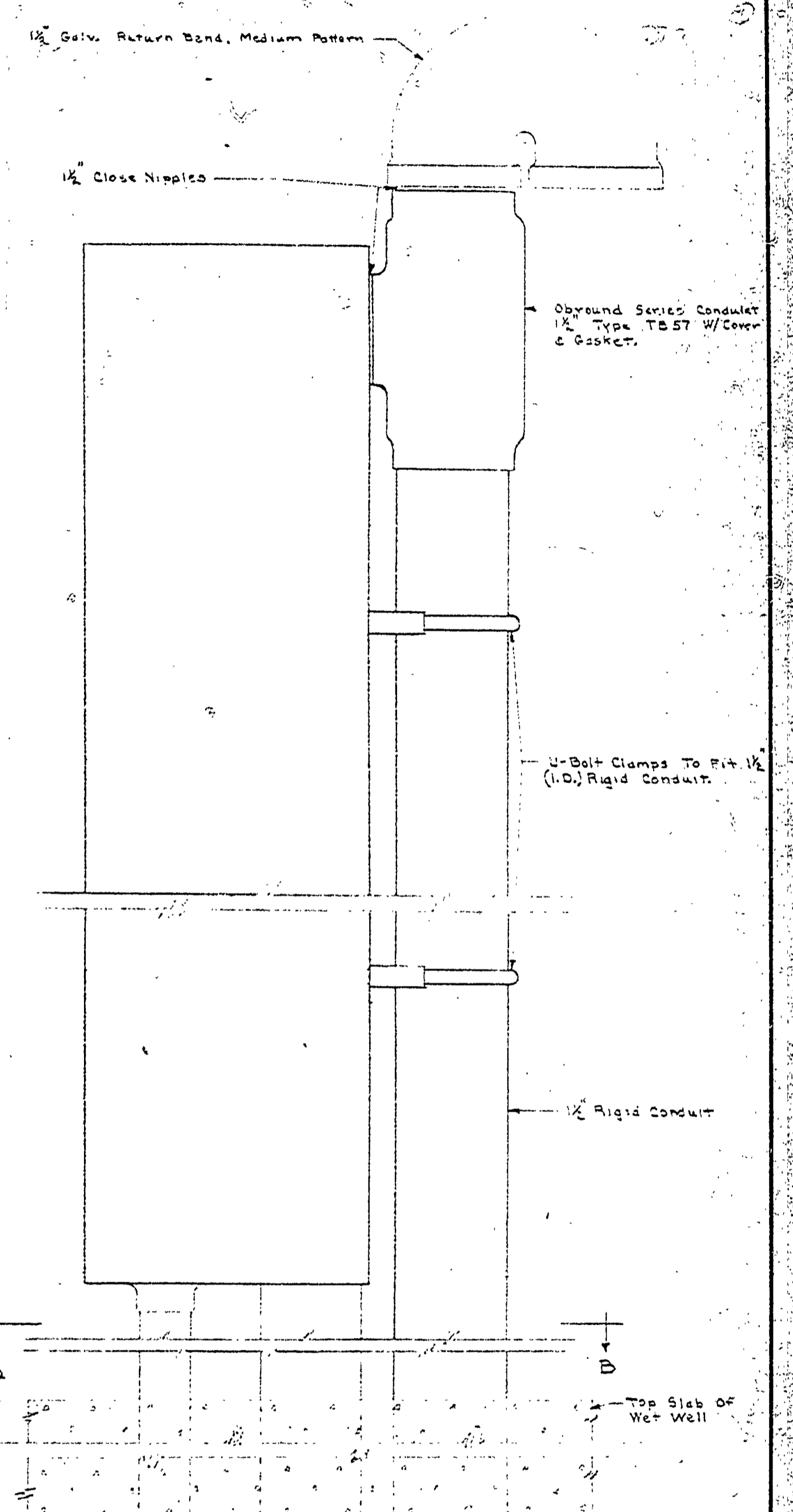


FRONT VIEW WITH COVER AND SWITCHES REMOVED

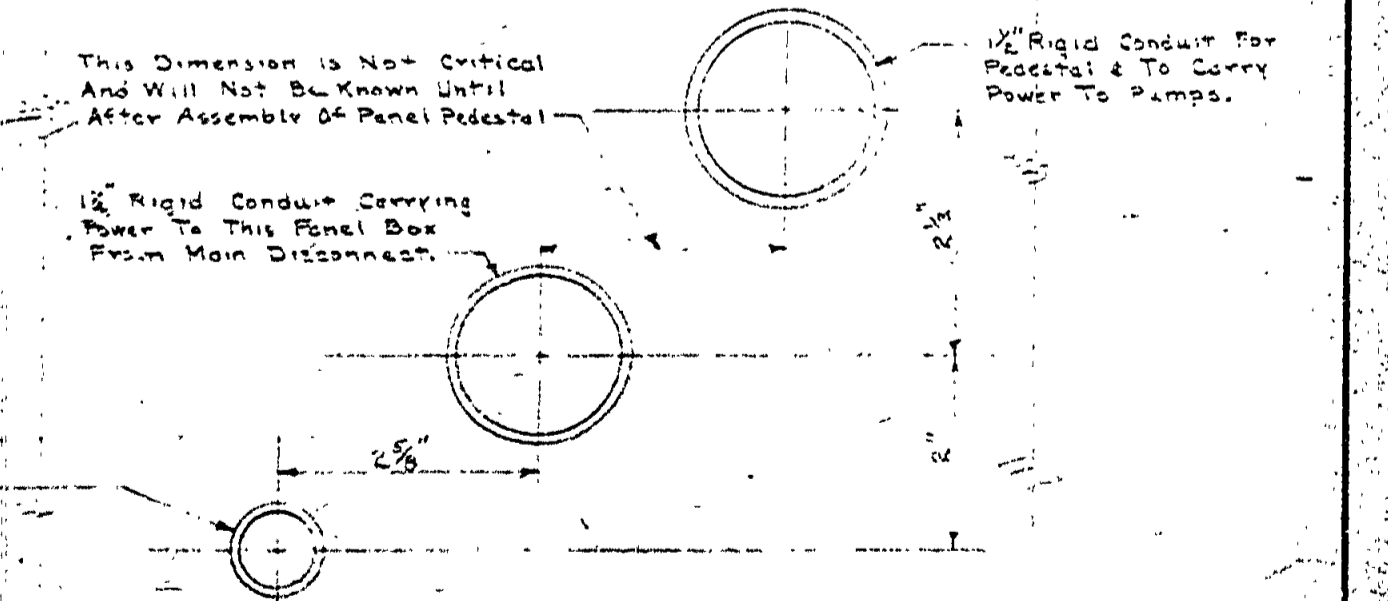


Use 1 1/2" Conduit 45° Elbow.
 See Sheet No. Section D-D
 For Direction Elbow is To Be Turned

NOTE: Do Not Pour Top Slab Or Wet Well
 Until Above Panel Pedestal is Assembled
 And Set in Position in Forms For
 Top Slab. The Float Rod Guide Must
 Be Plumb.
 The 1/2" Pedestal & 3/4" Float Rod Guide May
 Extend Beyond Bottom Of Top Slab.



SIDE VIEW



SECTION B-B

PANEL PEDESTAL INSTALLATION DETAILS

20 V. 3 ϕ PUMP CONTROL PANEL

MICHIGAN
 DEPARTMENT OF CONSERVATION
 PARKS AND RECREATION DIVISION

BRIMLEY STATE PARK
 CENTRAL SEWAGE DISPOSAL SYSTEM
 Half Scale

SHEET
 NO. 4
 OF 5
 PLAN NO.
 E-114