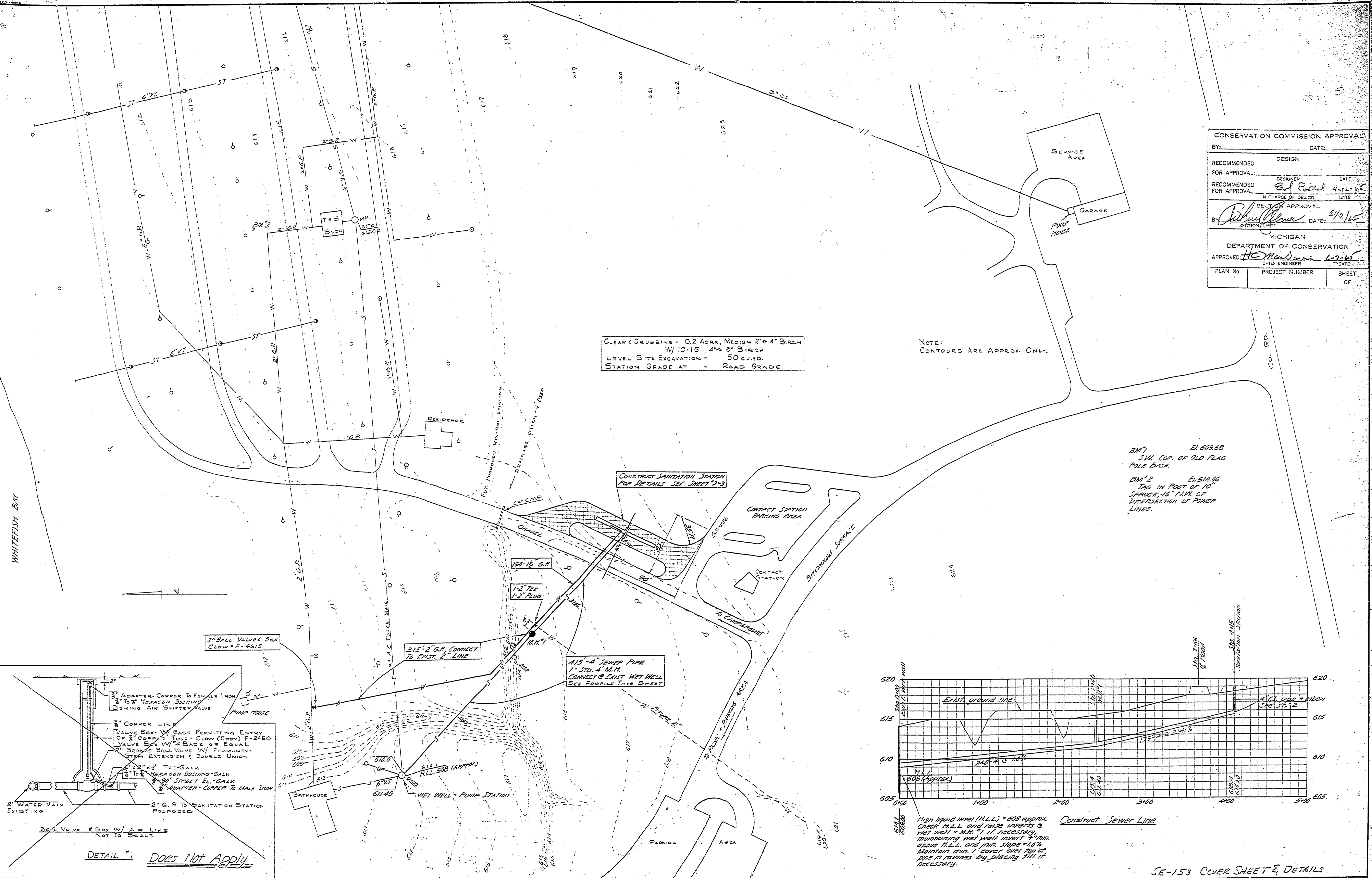


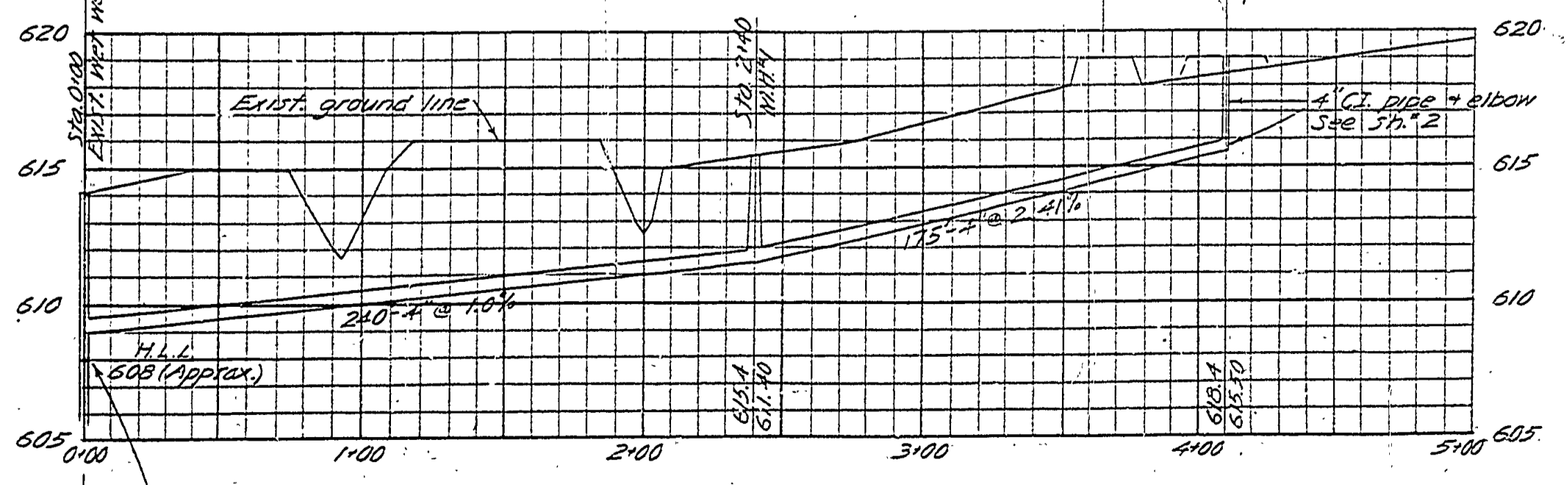
DESIGNED BY	DRAWN BY	CHECKED BY	DATE	REVIEWED	DATE	APPROVED	DATE	NO.	BY	REVISIONS
RMB	RMB	A. Vazquez	11-64	ARCHITECTURAL				1	1-65	Added Valve Box Detail
			12-64	ENGINEERING				2		
				LANDSCAPE				3		
								4		
								5		
								6		



CLEAR GRUBBING - 0.2 ACR., MEDIUM 2" 4" BIRCH
 W/ 10-15, 4" 2" BIRCH
 LEVEL SITE EXCAVATION - 50 CU.YD.
 STATION GRADE AT - ROAD GRADE

NOTE:
 CONTOURS ARE APPROX. ONLY.

BM#1 El. 609.68
 SW. COR. OF OLD FLAG
 POLE BASE.
 BM#2 El. 614.05
 TAG IN ROOT OF 10"
 SPRUCE, 15' N.W. OF
 INTERSECTION OF POWER
 LINES.



High liquid level (H.L.L.) = 608 approx.
 Check H.L.L. and raise inverts @
 wet well + M.H. #1 if necessary,
 maintaining wet well invert 4" min.
 above H.L.L. and min. slope 1:100.
 Maintain min. 7' cover over top of
 pipe in ravines by placing fill if
 necessary.

Construct Sewer Line

SE-153 COVER SHEET & DETAILS

CONSERVATION COMMISSION APPROVAL		
BY:	DESIGN	DATE:
RECOMMENDED FOR APPROVAL:	DESIGNER	DATE
RECOMMENDED FOR APPROVAL:	IN CHARGE OF DESIGN	DATE
BY:	SECTION CHIEF	DATE: 6/17/65
MICHIGAN DEPARTMENT OF CONSERVATION		
APPROVED:	CHIEF ENGINEER	DATE: 6-2-65
PLAN No.	PROJECT NUMBER	SHEET OF

MICHIGAN DEPARTMENT OF CONSERVATION
 PARKS AND RECREATION DIVISION

BRIMLEY STATE PARK
 SANITATION STATION PLOT PLAN
 SCALE 1" = 50'

SHEET NO. 14 OF 16
 PLAN NO. Brimley E-115