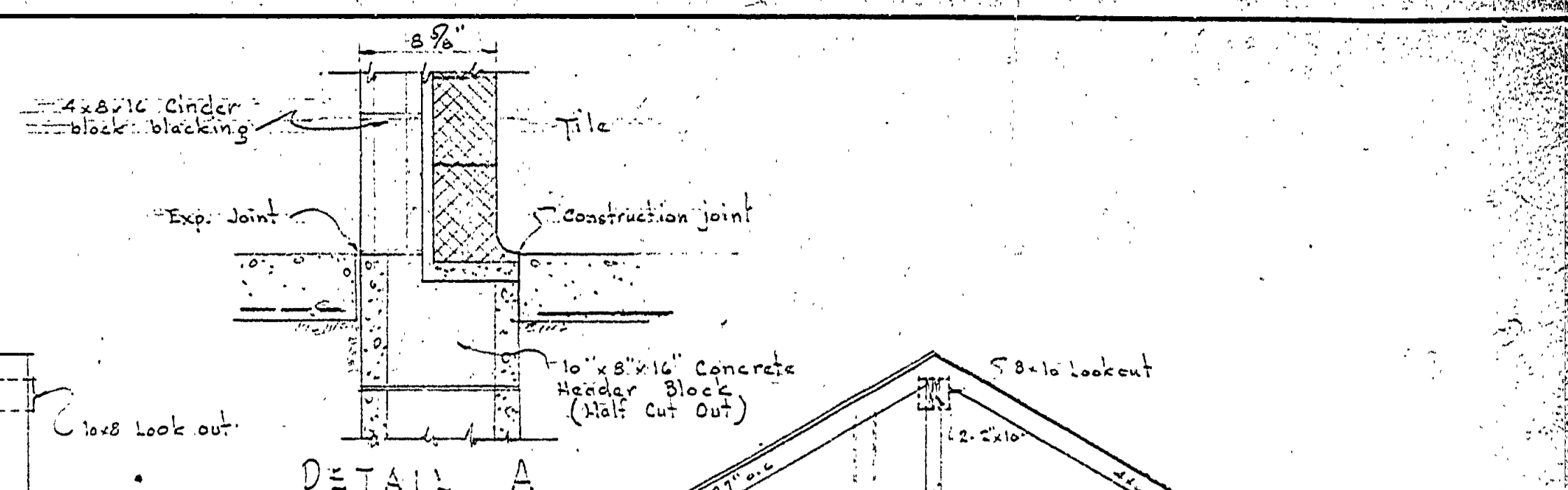
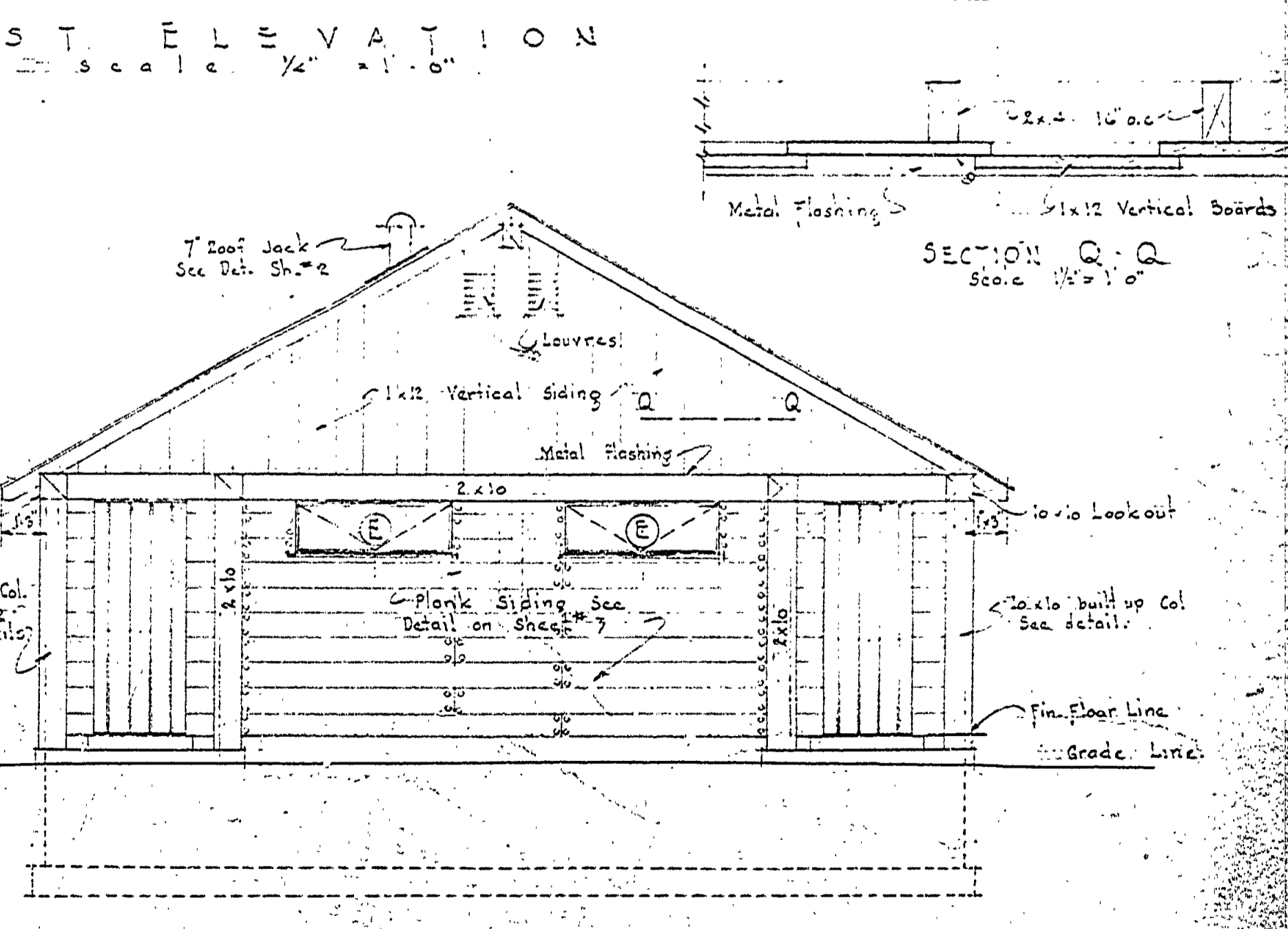
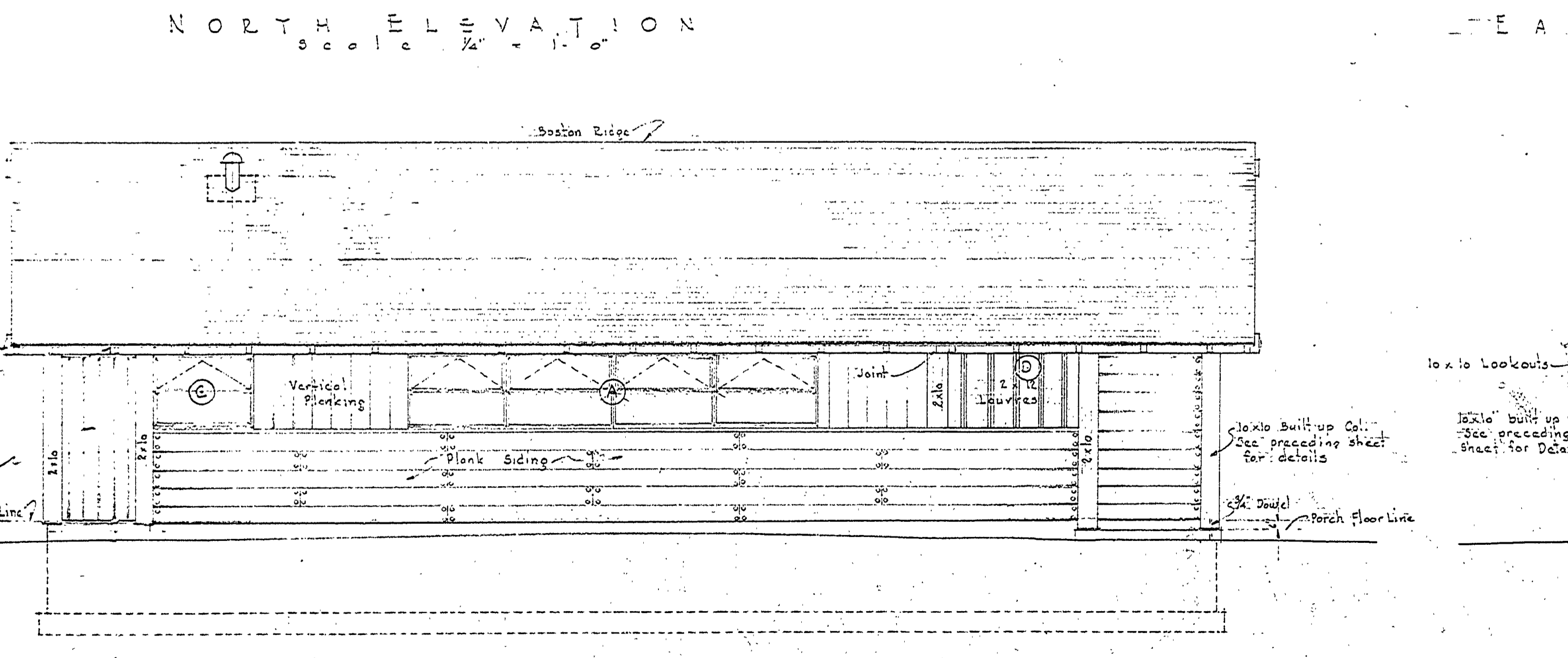
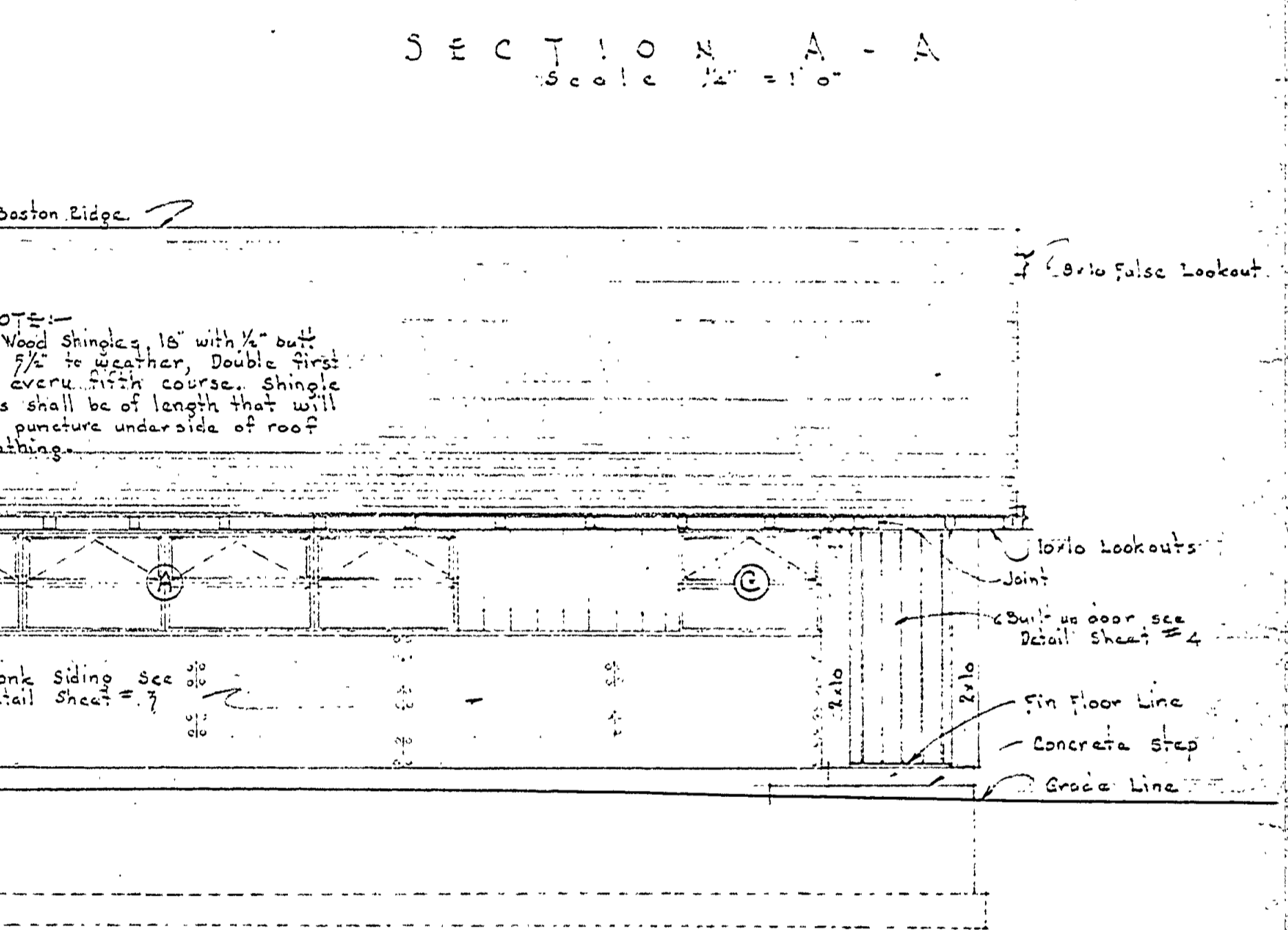
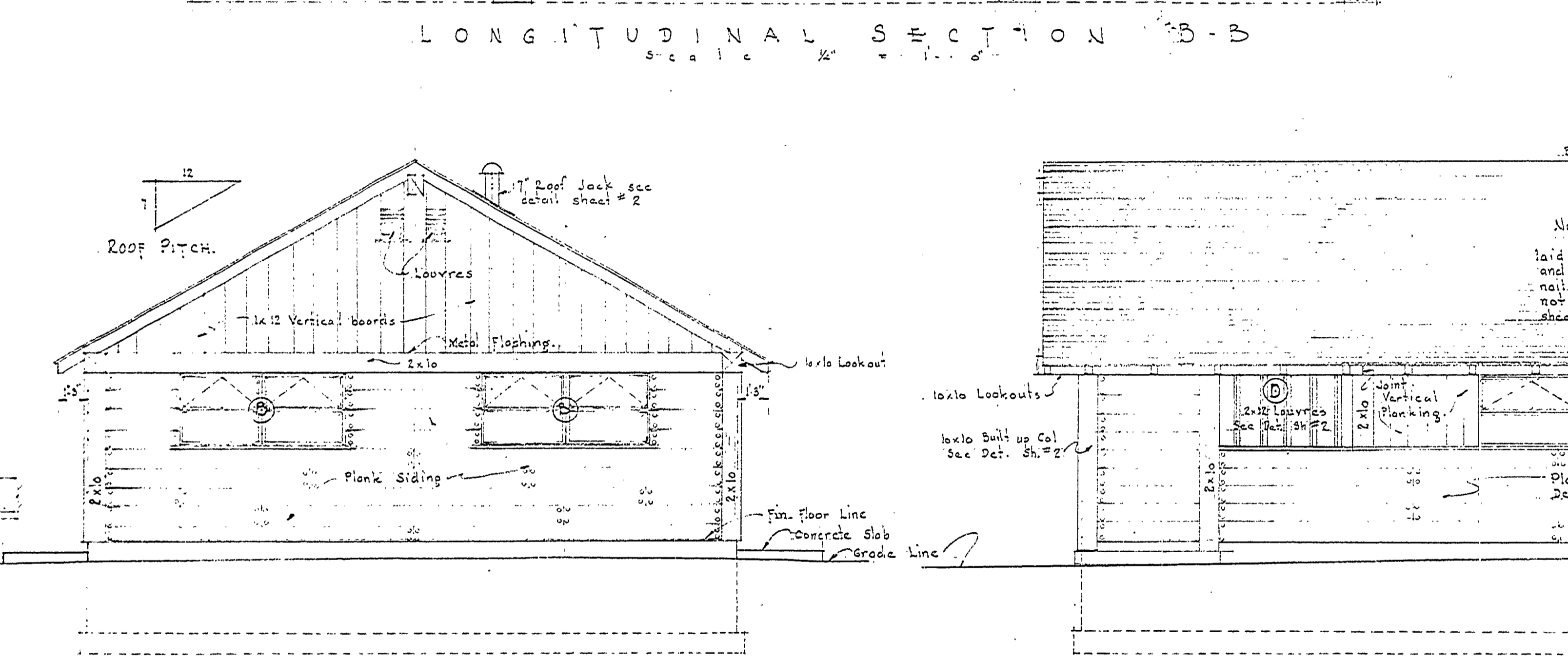
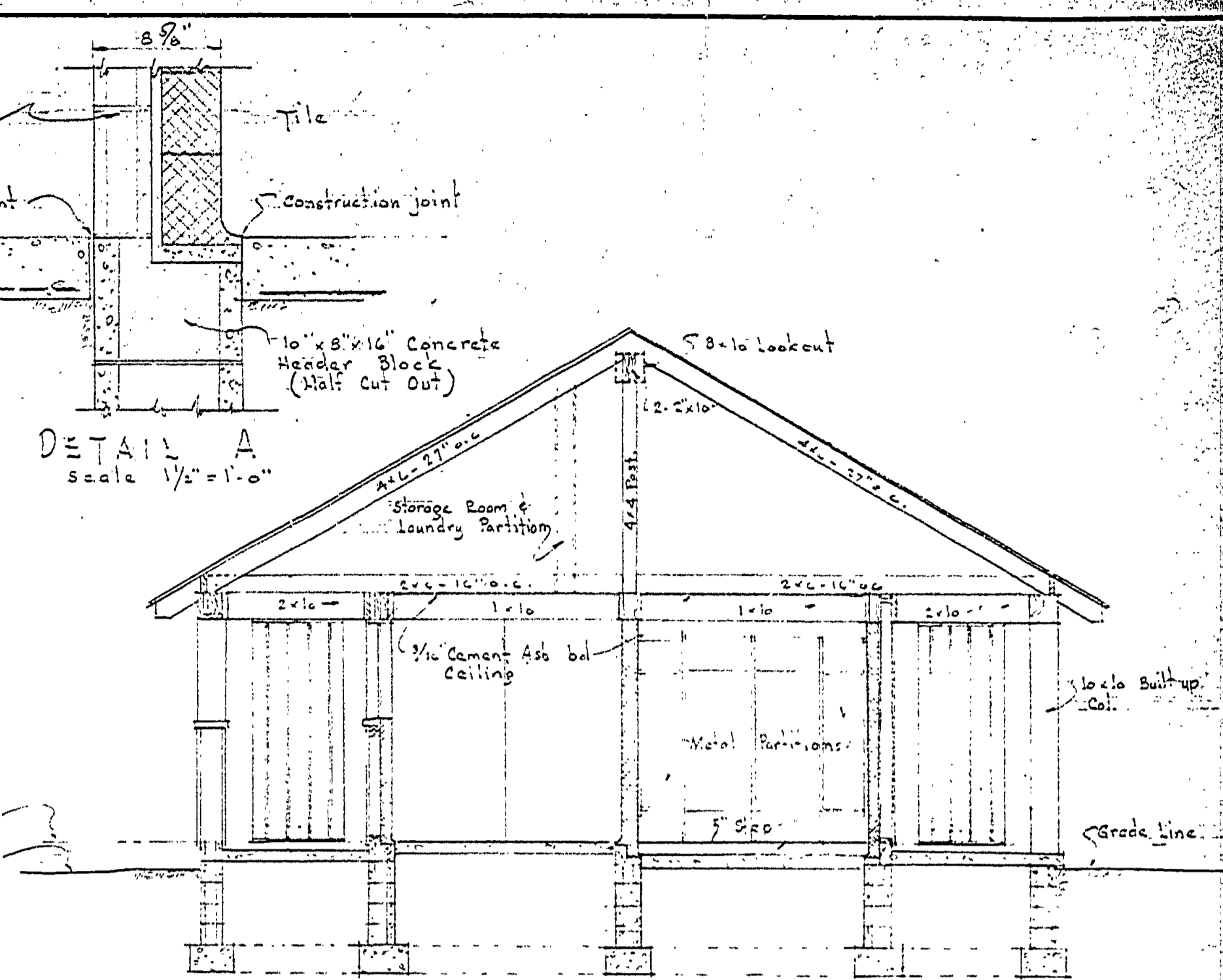
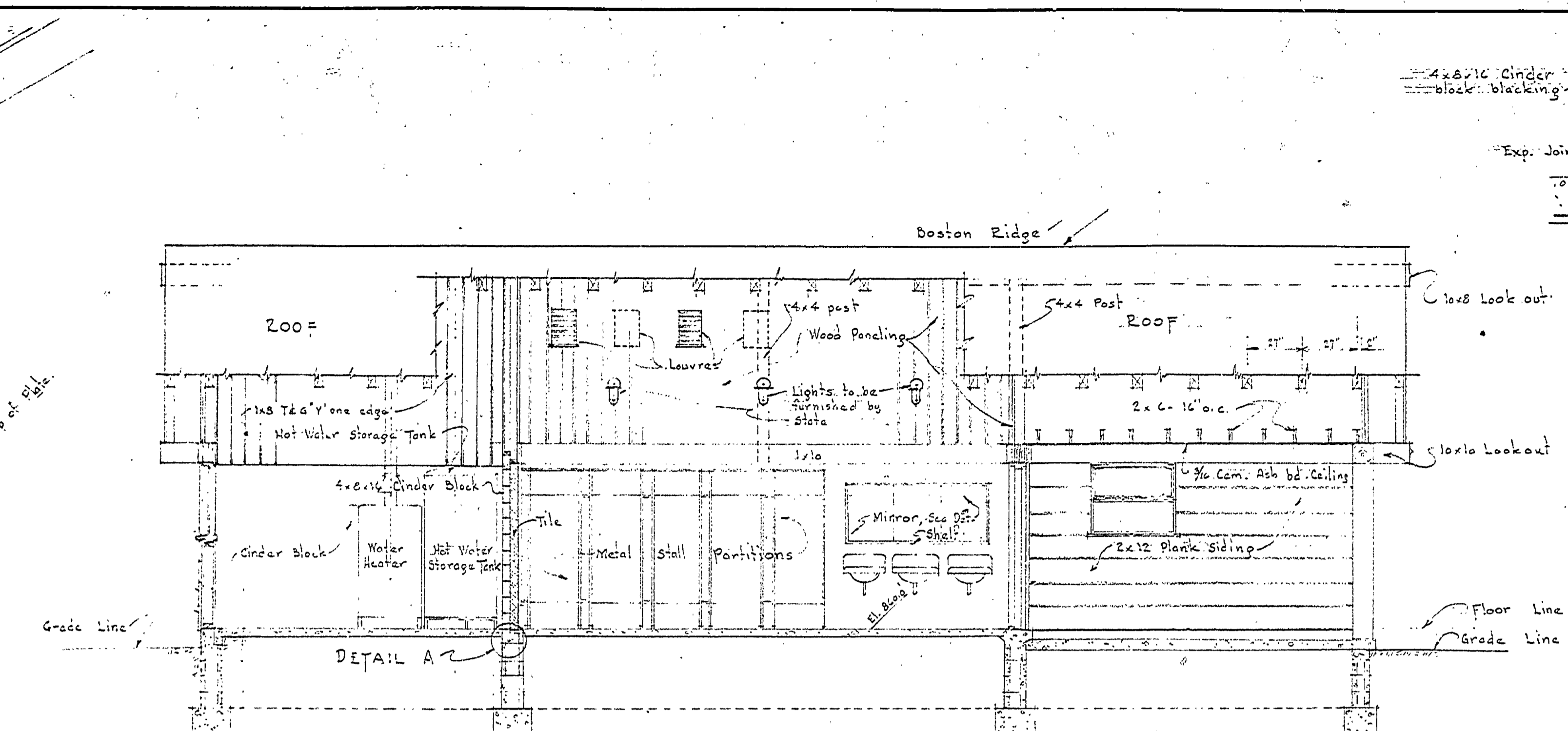
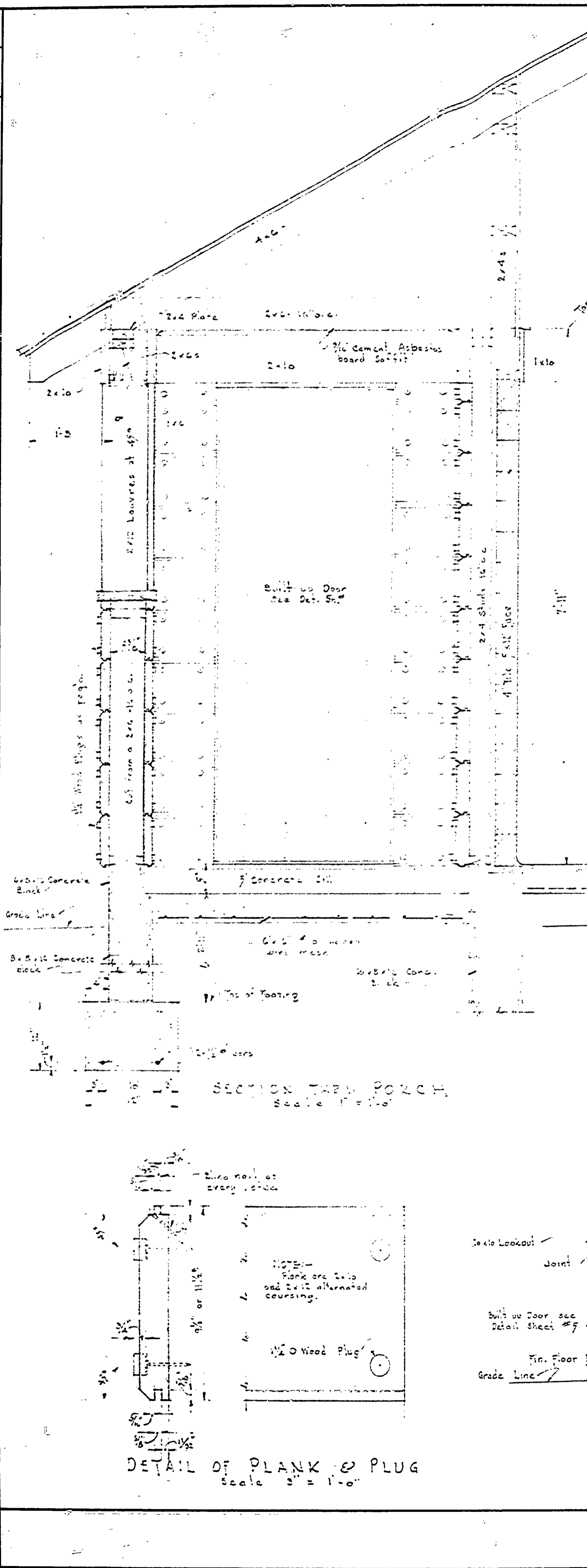


DESIGNED BY JOHN D. GREENWOOD	REVIEWED BY SECTIONS	APPROVED BY	NO.	DATE	BY
DRAWN BY S.W.F.	ARCHITECTURAL H.C.M.	J.T.R.	1	1/16/53	J.W.F.
CHECKED BY S.W.F.	ENGINEERING H.C.M.	J.T.R.	2		
DATE 8-11-53	LANDSCAPE J.T.R.	J.T.R.	3		
			4		
			5		
			6		



NOTE:
Wood shingles 16" with 1/2" butt
laid 7/8" to weather. Double first
and every fifth course. Shingle
nails shall be of length that will
not puncture underside of roof
sheathing.