

INTERLOCHEN STATE PARK

CONSTRUCTION PLANS FOR BATHHOUSE AND SHELTER

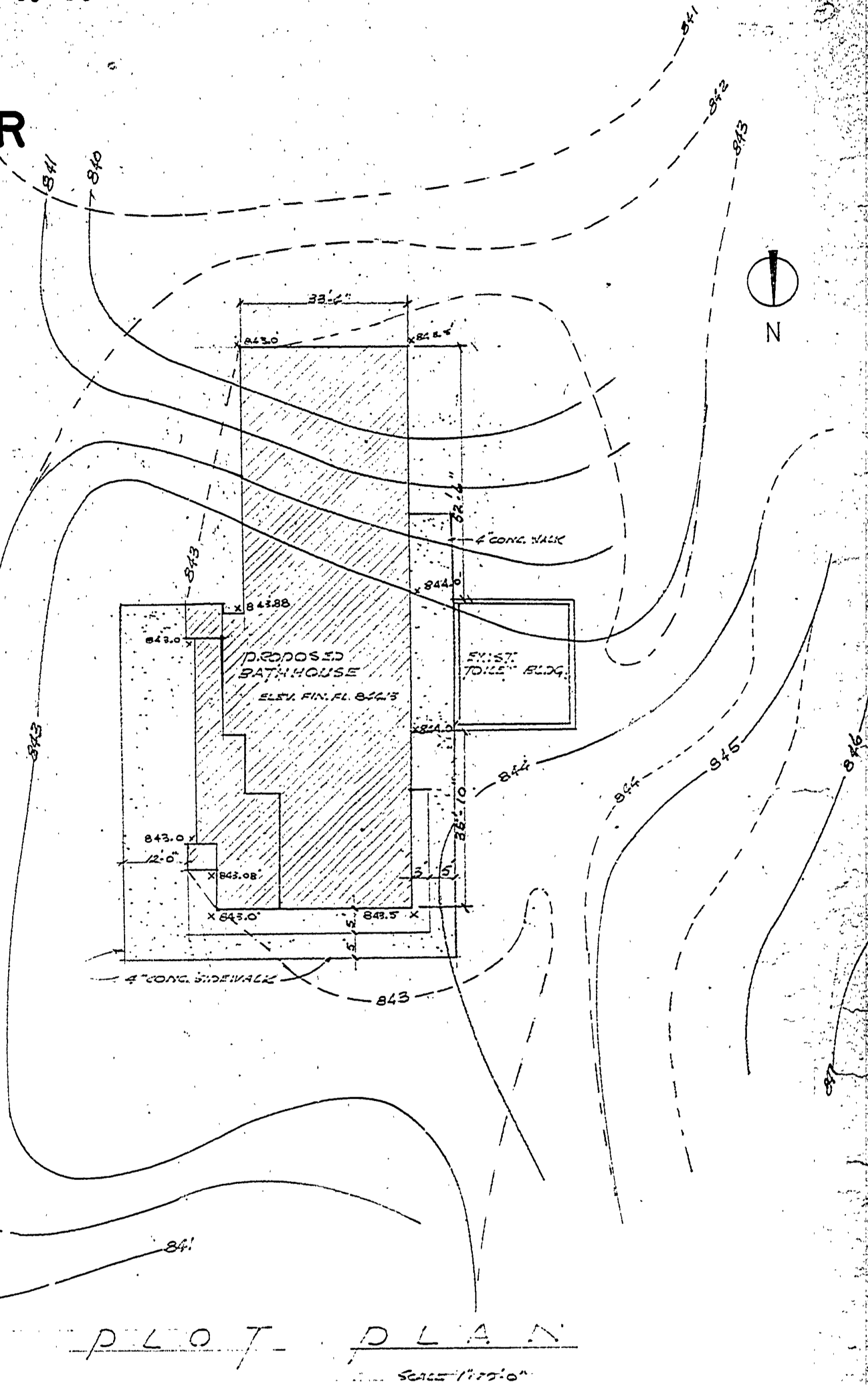
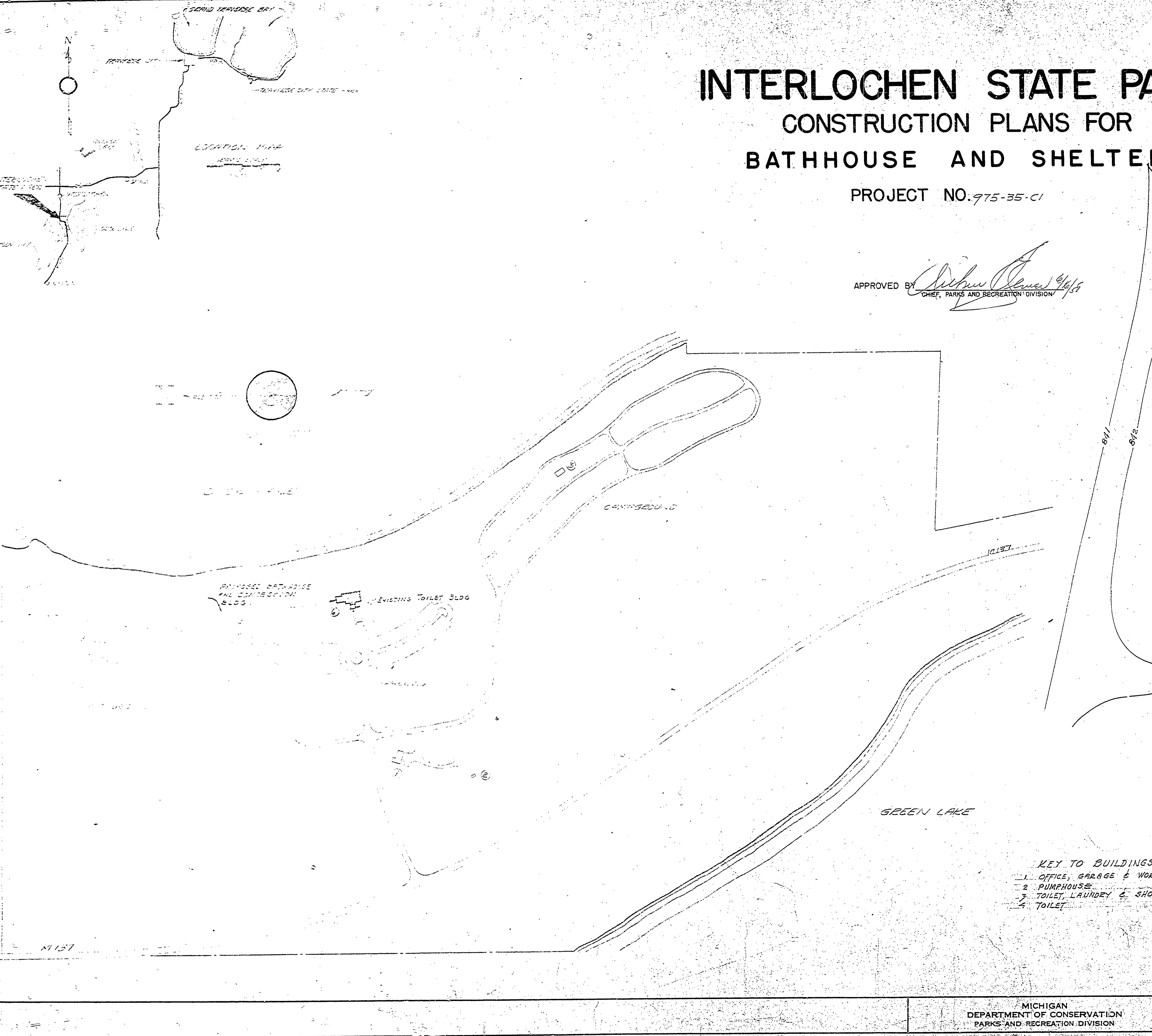
PROJECT NO. 975-35-C1

APPROVED BY *Arthur J. ...*
CHIEF, PARKS AND RECREATION DIVISION 4/6/58

NO.	DATE	BY	REVISIONS
1	4/1/58	AC	MISC. REVISIONS.
2			
3			
4			
5			
6			

DATE	APPROVED BY	NO. DATE BY	REVISIONS
4-5-58	<i>M.C. ...</i>	1 4/1/58 AC	MISC. REVISIONS.
4-5-58	ASSISTANT CHIEF IN CHARGE OF DESIGN	2	
4-5-58		3	

REVIEWED BY SECTIONS	DATE	APPROVED BY	NO. DATE BY	REVISIONS
ARCHITECTURAL	<i>J.H.R.</i>	<i>M.C. ...</i>	1 4/1/58 AC	MISC. REVISIONS.
ENGINEERING	<i>J.H.R.</i>	ASSISTANT CHIEF IN CHARGE OF DESIGN	2	
LANDSCAPE	<i>J.H.R.</i>		3	



- KEY TO BUILDINGS.
- 1. OFFICE, GARAGE & WORKSHOP.
 - 2. PUMPHOUSE.
 - 3. TOILET, LAUNDRY & SHOWER.
 - 4. TOILET.

DRAWING SCHEDULE		
PLAN No.	SHEET No.	TITLES
A-107a	1	Title and Location Plan
A-107a	2	Foundation & Plumbing Plan
A-107a	3	Floor Plan and Schedules
A-107a	4	Elevations
A-107a	5	Sections - Framing Plan and Details
A-107a	6	Sections and Details
A-107a	7	Sections and Details
A-107a	8	Details
A-107a	9	Electrical Layout & Details.

MICHIGAN DEPARTMENT OF CONSERVATION
PARKS AND RECREATION DIVISION

TITLE AND LOCATION PLAN
INTERLOCHEN STATE PARK
BATHHOUSE AND CONCESSION PORTION OF
BATHHOUSE, TOILET AND CONCESSION.
SHEET NO. 1 OF 9 PLAN NO. A-107a