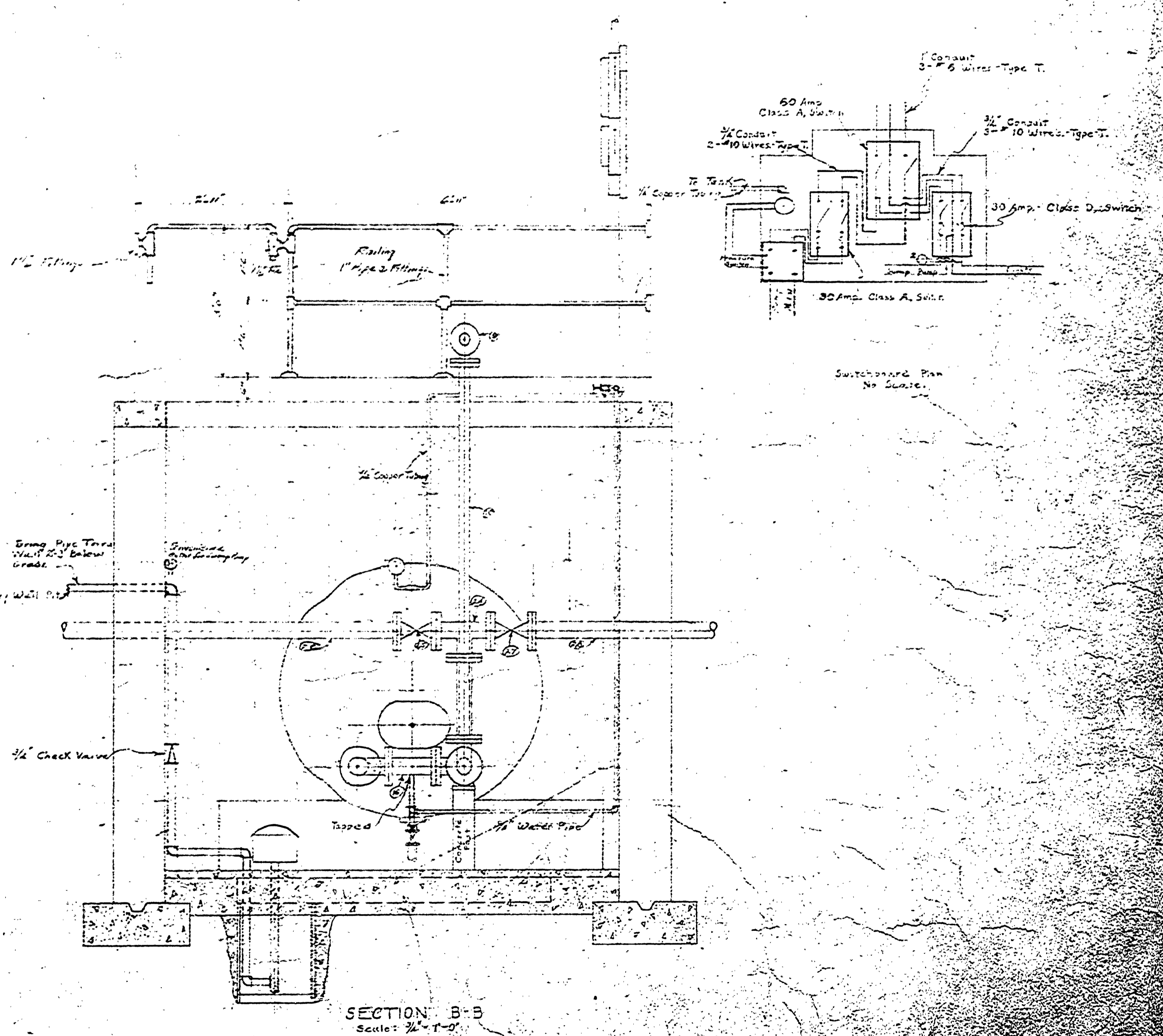
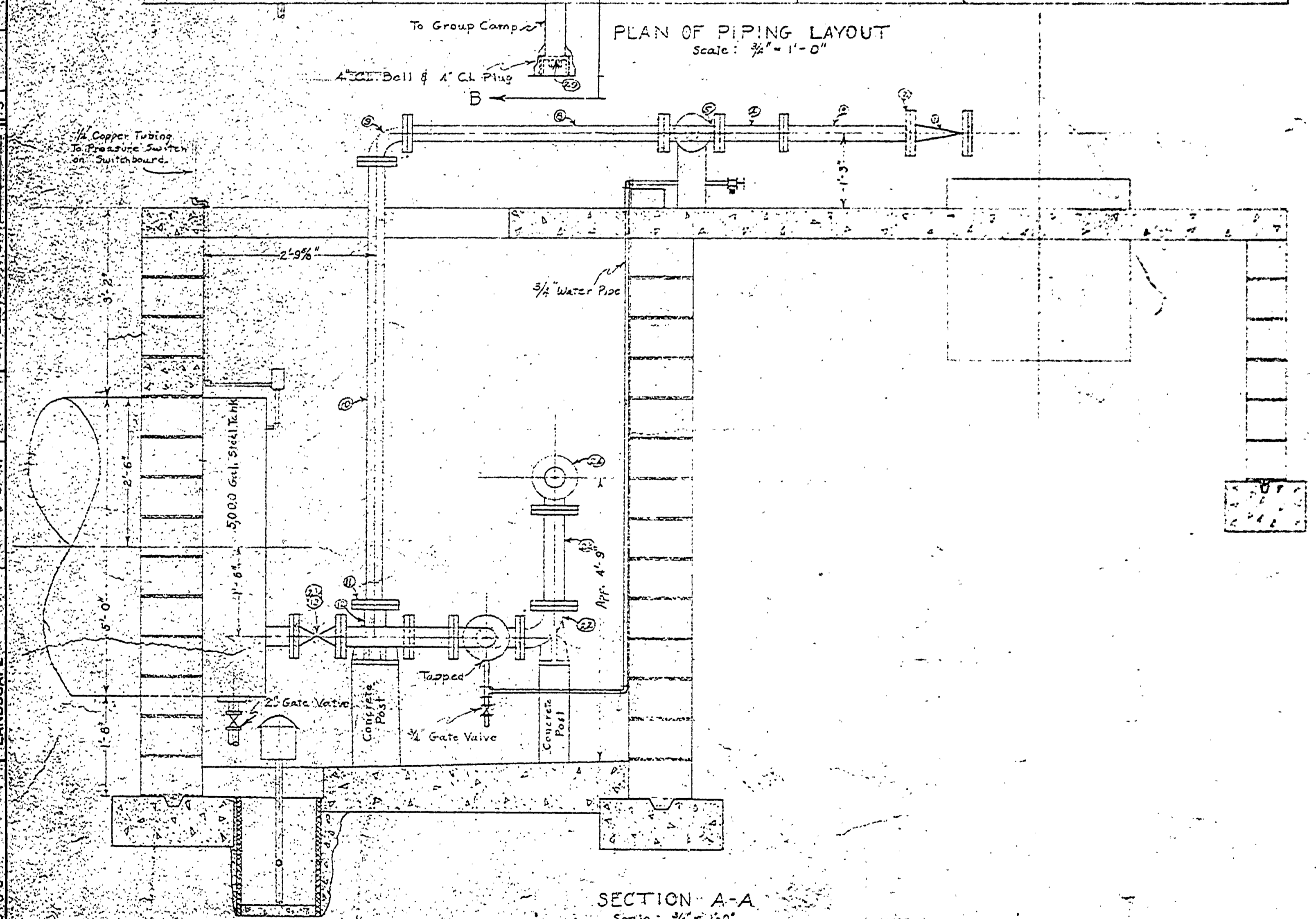
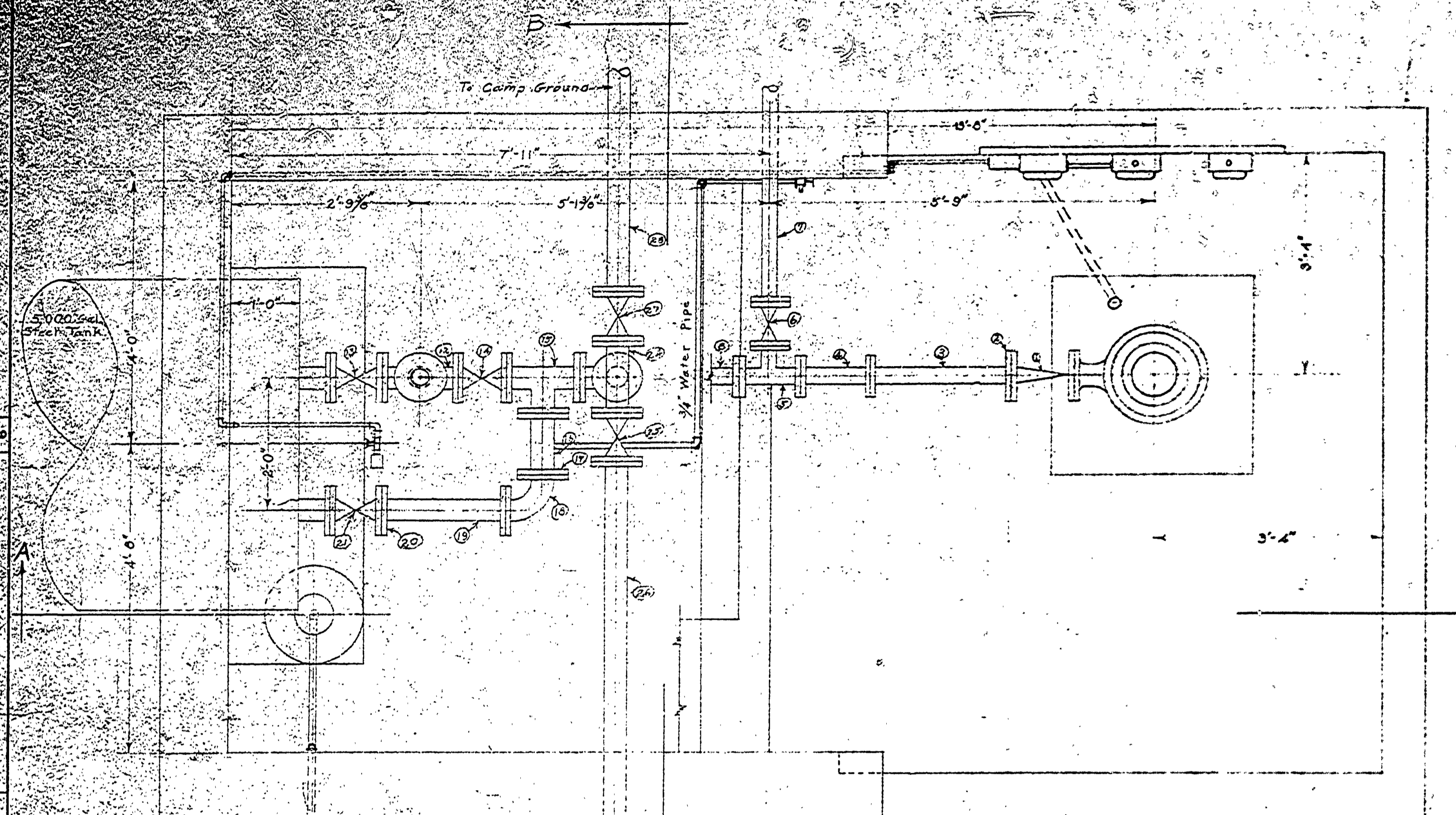


ITEM	DESCRIPTION
1	3" Check Valve - Flanged - overhead pump is read.
2	3" Companion Flange - overhead pump is read.
3	150° Flanged Pipe - 2'-10" Thread one End
4	3" 150° Flanged Pipe - 12'-7/8" Long
5	3" Flanged Tee
6	3" Flanged Gate Valve
7	3" 150° Flanged Pipe - 3'-6" Long, Thread on End.
8	3" 150° Flanged Pipe - 4'-2 1/4" Long
9	3" Elbow - Flanged
10	3" 150° Flanged Pipe - 7'-5" Long, Thread one End
11	3" X 9" Reducing Flange
12	4" Base Tee, Flanged
13, 14, 15, 27	4" Flanged Valve
15, 24	4" Flanged Tee
16	4" 150° Flanged Pipe - 10' Long, Thread one End, w/ Tap for 1/2" Pipe
17, 20	4" Companion Flange
18	4" Elbow, Flanged
19	4" 150° Flanged Pipe - 1'-10 1/2" Long, Thread one End
22	4" Base Elbow, Flanged
22	2" 150° Flanged Pipe - 1'-7" Long
26, 28	4" B.S. Pipe 10'-0" Long, Flange one End
29	4" C.I. Plug



PROJECT NO. 100-100-100  
 DATE 1-28-30  
 DRAWN BY V.A.R.  
 CHECKED BY V.A.R.  
 ENGINEERING V.A.R.  
 ARCHITECTURAL V.A.R.  
 LANDSCAPE V.A.R.  
 ASSISTANT CHIEF IN CHARGE V.A.R.  
 OF DESIGN DATE 1-28-30