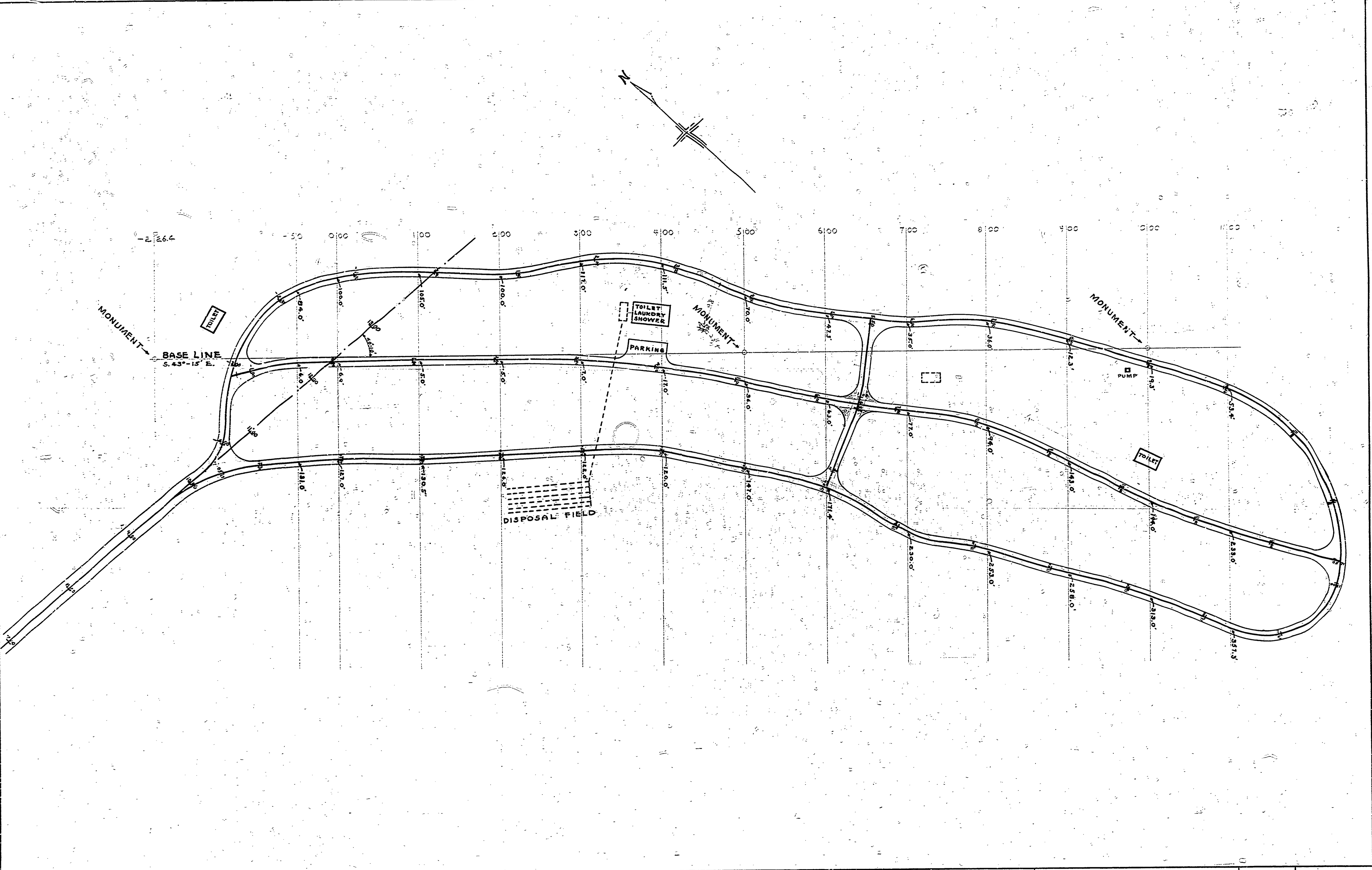


|                             |                      |         |                           |             |           |         |
|-----------------------------|----------------------|---------|---------------------------|-------------|-----------|---------|
| DRAWN BY<br><b>L. E. L.</b> | REVIEWED BY SECTIONS | DATE    | APPROVED BY               | NO. DATE BY | REVISIONS | DATE BY |
| TRACED BY<br><b>J.T.R.</b>  | ARCHITECTURAL        | 3-23-53 | <i>[Signature]</i>        | 1           | 4         |         |
| CHECKED BY<br><b>H.C.M.</b> | ENGINEERING          | 4/14/53 | ASSISTANT CHIEF IN CHARGE | 2           | 5         |         |
| DATE<br><b>11-12-52</b>     | LANDSCAPE            | 3-15-53 | OF DESIGN                 | 3           | 6         |         |



SCALE 1" = 50'

MICHIGAN  
DEPARTMENT OF CONSERVATION  
PARKS AND RECREATION DIVISION

INTERLOCHEN STATE PARK  
SOUTH CAMP GROUND  
PLAN & ROAD ALIGNMENT

SHEET  
NO. 7  
OF 8

PLAN NO.  
L-105