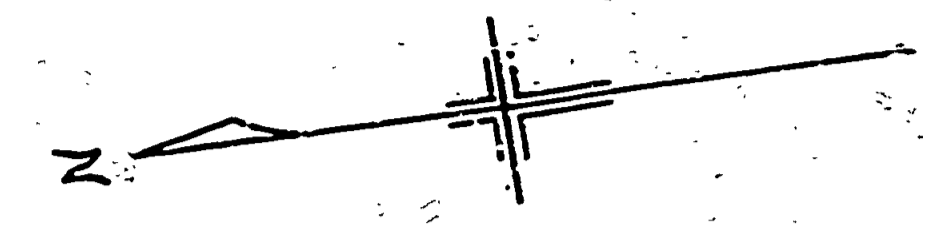


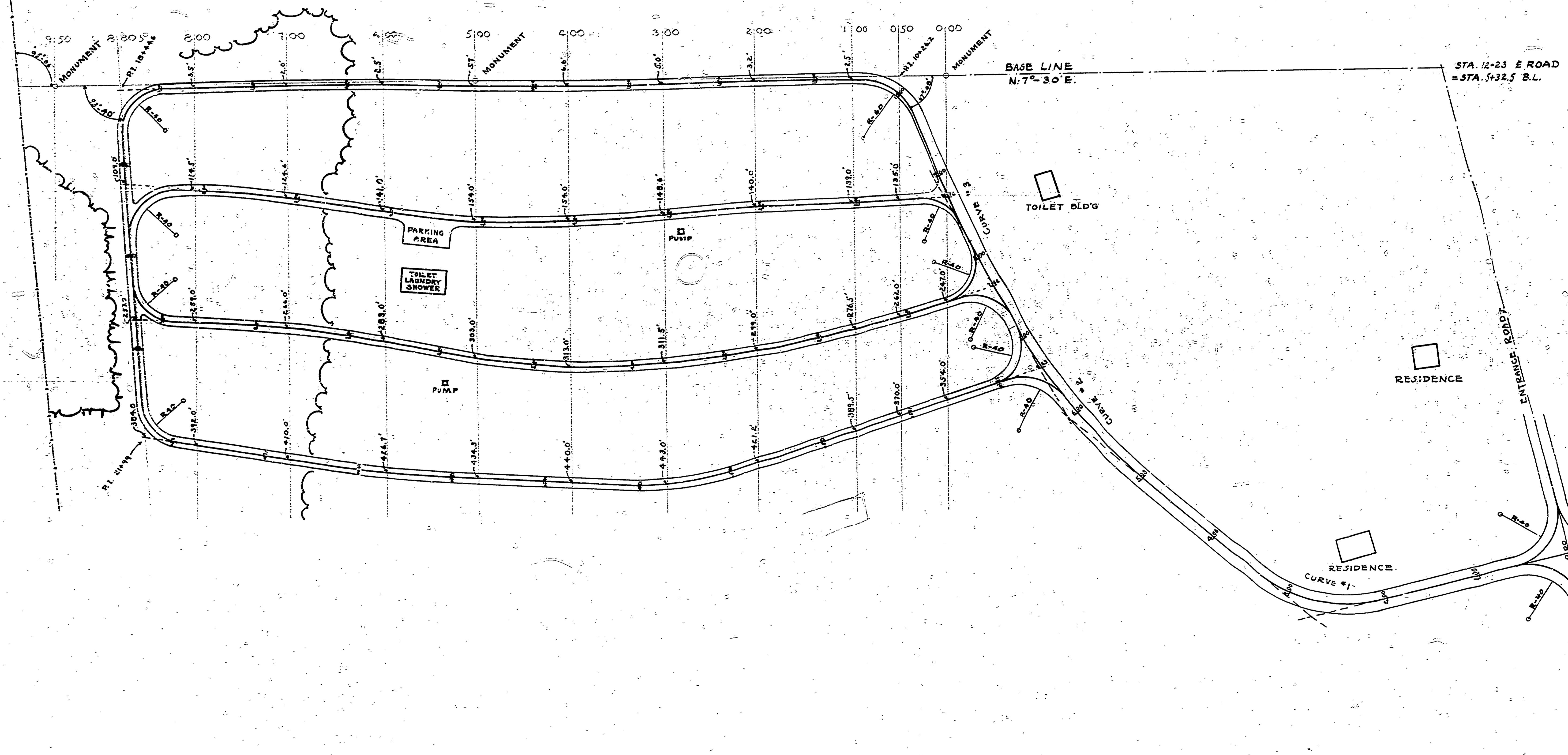
DRAWN BY	L. E. L.	REVIEWED BY SECTIONS	DATE	APPROVED BY	NO. DATE BY	REVISIONS	DATE BY
TRACED BY		ARCHITECTURAL	J.C.R. 3-23-52	<i>[Signature]</i>	1	4	
CHECKED BY		ENGINEERING	H.C.M. 3/24/52	ASSISTANT CHIEF IN CHARGE	2	5	
DATE	11-12-52	LANDSCAPE	J.T.E. 3-23-52	OF DESIGN	3	6	



CURVE #1 DATA
 $\Delta = 34^{\circ}20'$
 $D = 39'$
 $T = 76.84$
 $L = 139.32$
 $R = 146.72$
 $E = 18.22$
 $PC = 2406.16$
 $PI = 3483.0$
 $PT = 3145.48$
 SUPERELEVATION = .03'/ft

CURVE #2 DATA
 $\Delta = 21^{\circ}20'$
 $D = 9'$
 $T = 117.90$
 $L = 237.03$
 $R = 626.70$
 $E = 11.19$
 $PC = 4189.10$
 $PI = 6407.0$
 $PT = 7424.13$

CURVE #3 DATA
 $\Delta = 6^{\circ}0'$
 $D = 7'$
 $T = 42.87$
 $L = 85.71$
 $R = 112$
 $PC = 8406.4$
 $PI = 8447.2$
 $PT = 8472.2$



SCALE 1"=50'

MICHIGAN
 DEPARTMENT OF CONSERVATION
 PARKS AND RECREATION DIVISION

INTERLOCHEN STATE PARK
 NORTH CAMP GROUND
 PLAN & ROAD ALIGNMENT

SHEET NO. 8
 OF 8
 PLAN NO. L-105