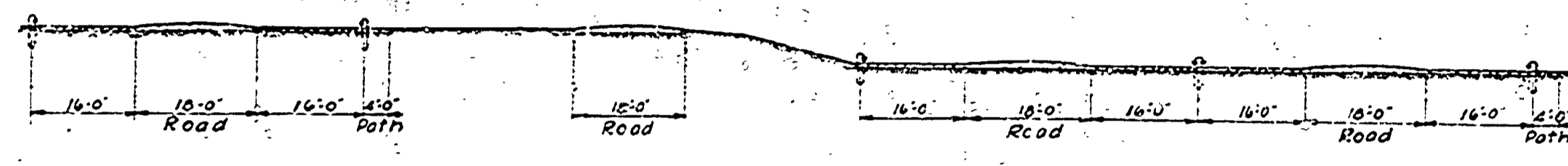


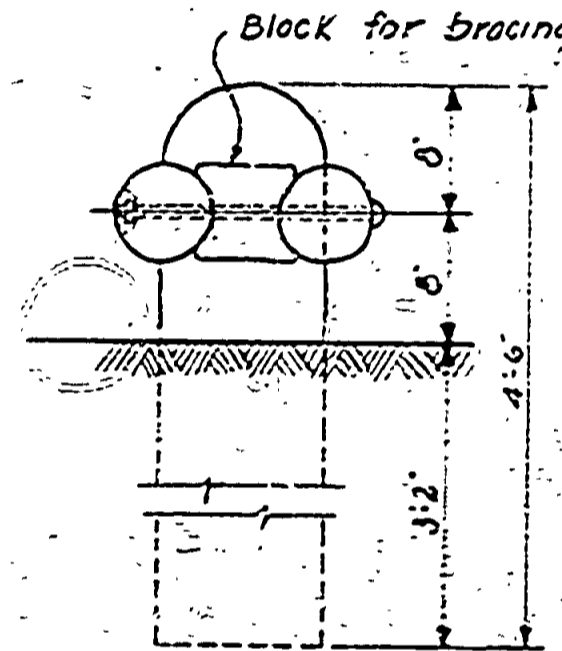
LAKE HURON

Low Rolling Sand Dunes

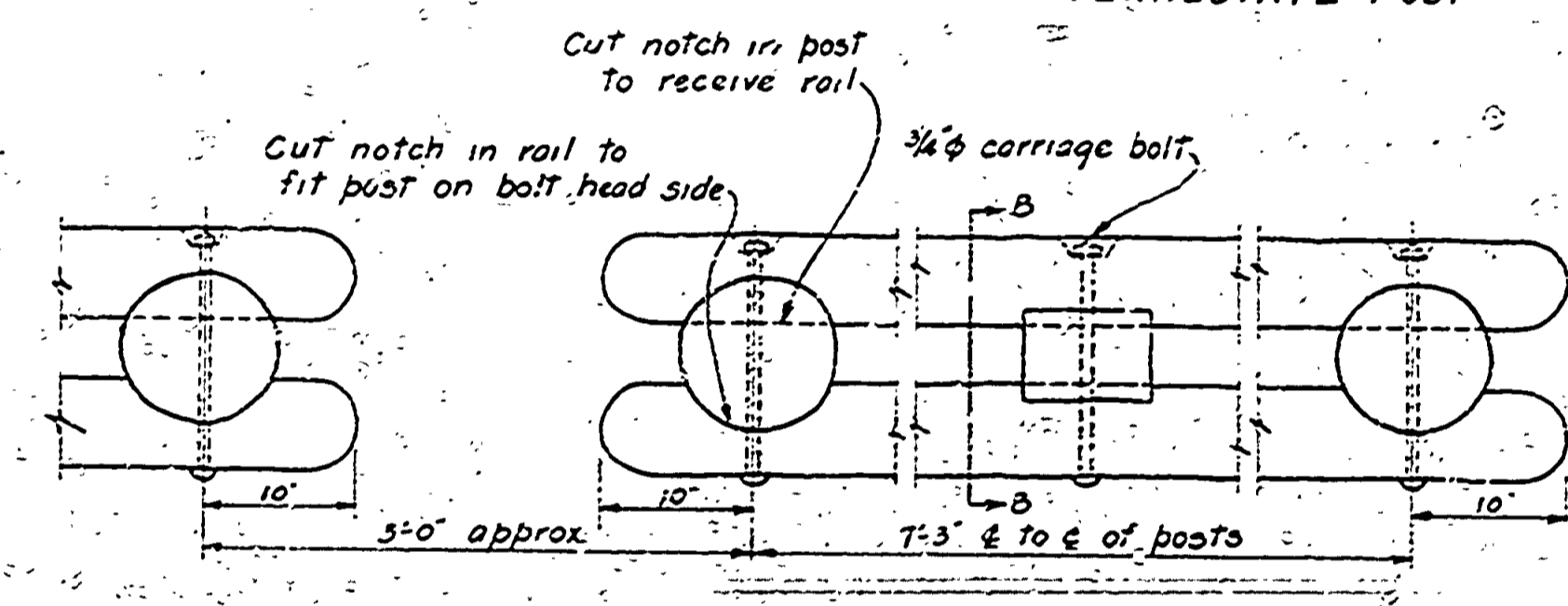
PLAN OF PARKING AREAS
SCALE 1"=40'
CAPACITY 100 CARS



SECTION A-A
Scale 1"=20'0"



SECTION B-B



PLAN

DOUBLE RAIL LOG BARRIERS
Details otherwise similar to single rail log barriers

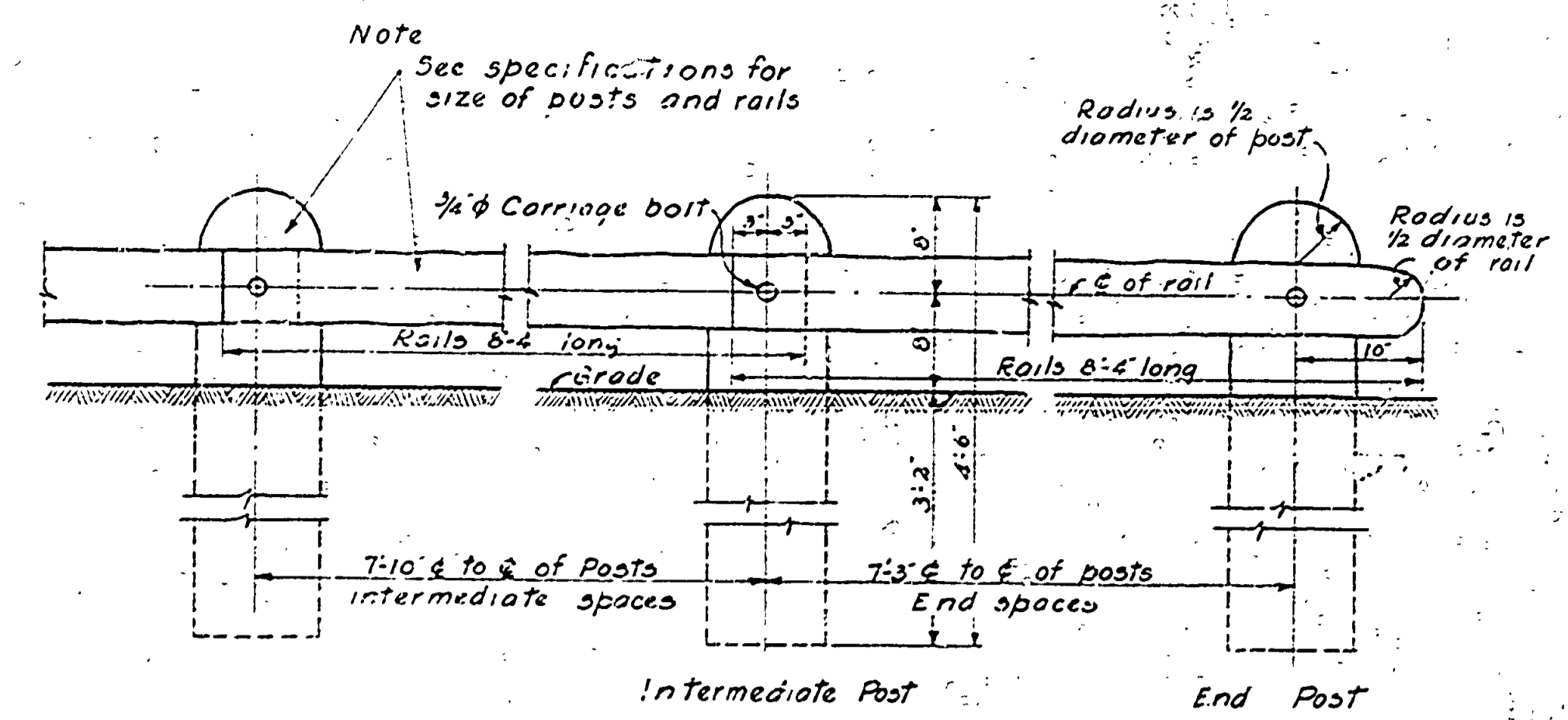
SPECIFICATIONS
SIZE

RAILS- Rails for single log barriers to be cut from 8'-4" lengths, and for double log barriers, from 8'-11" lengths. Finished lengths to be as marked on the drawings. All rails shall have a diameter of not less than 5/2" or more than 1" at any point.

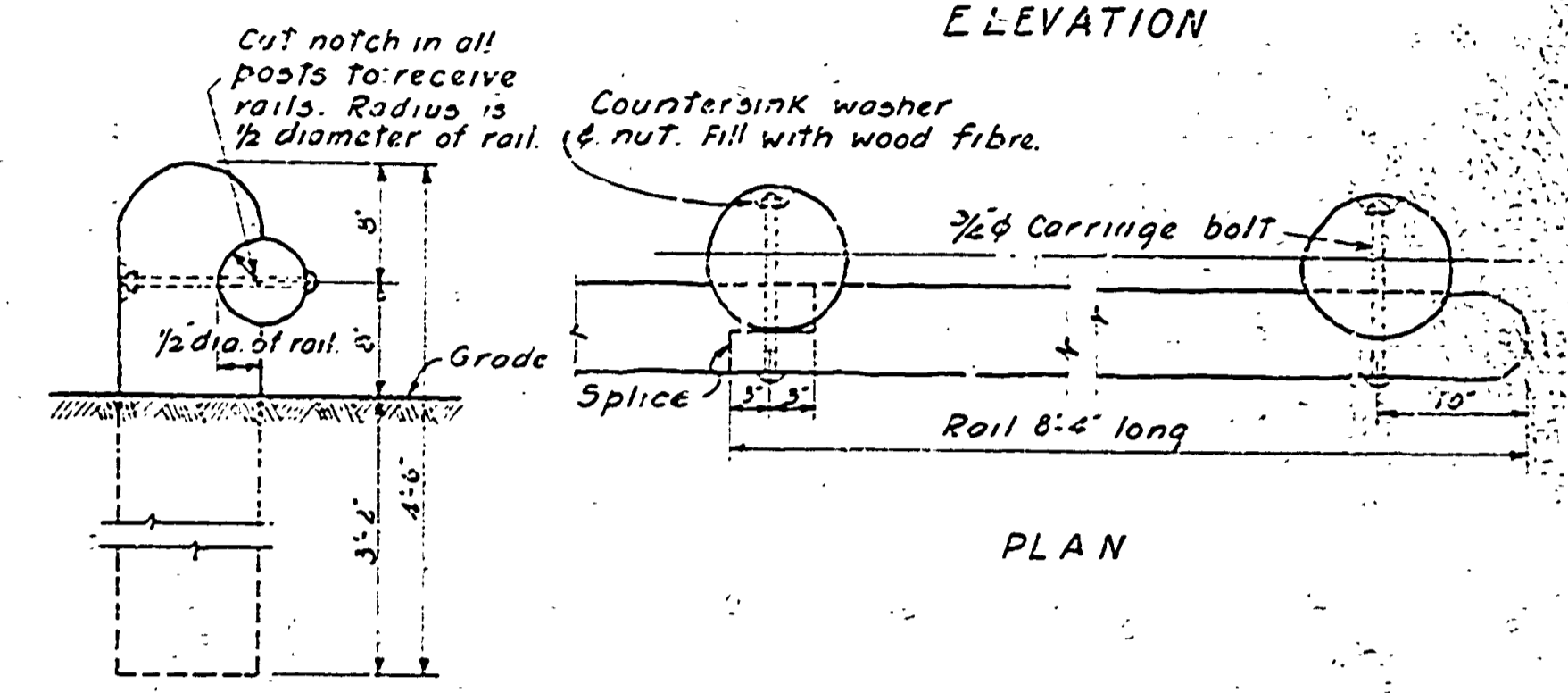
POSTS- All posts shall have a diameter of not less than 8 1/2" or more than 10" at the tops and shall taper not more than 1" in 5'-0".

MATERIAL- All posts and rails shall be straight, well seasoned, sound, and free from rot of cedar, oak, locust or other approved wood. They shall be sawed square at the bottom and both outer and inner bark removed.

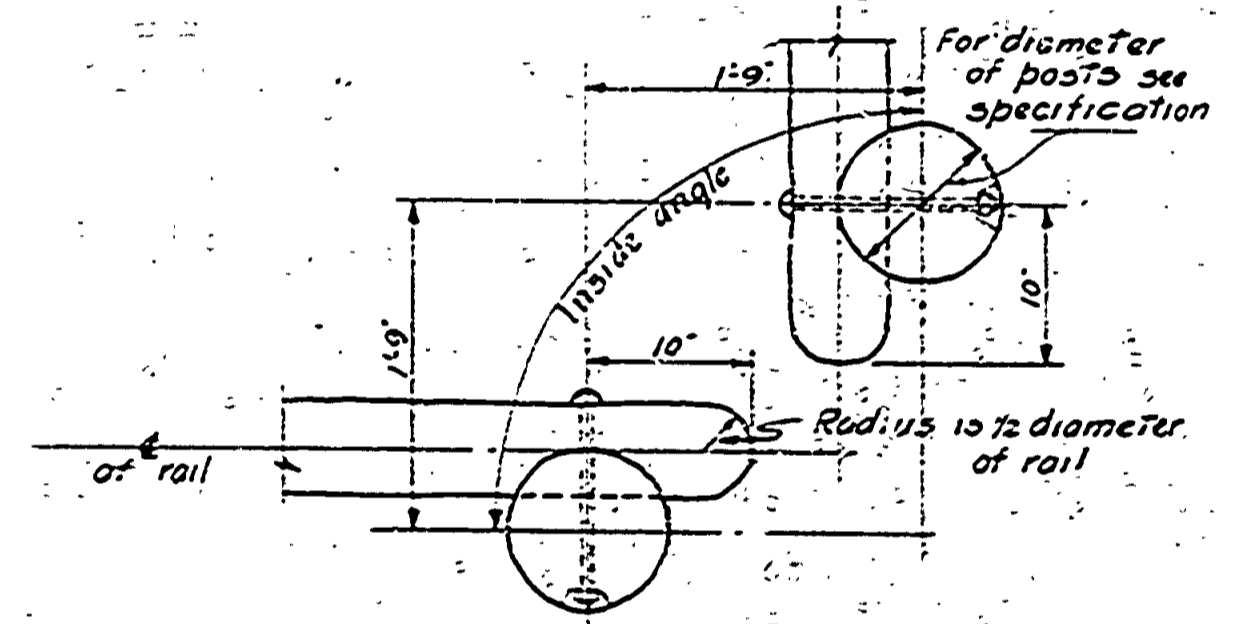
FINNISH- The barrier shall be thoroughly covered by two coats of stain extending 6" below grade on posts. Allow at least two weeks between coats of stain.



ELEVATION



SIDE ELEVATION OF INTERMEDIATE POST



PLAN OF TYPICAL PARKING SPACE BARRIER CORNER
Where inside angle is less than 180°

PARKING SPACE LOG BARRIERS
SCALE 1"=1'-0"

DEPARTMENT OF THE INTERIOR NATIONAL PARK SERVICE And MICHIGAN DEPARTMENT OF CONSERVATION CO-OPERATING			
BRANCH OF PLANNING		STATE PARK DIVISION	
SYMBOL	BLACK LAKE CAMP NO. 77-S	SHEET NO.	1 of 1
NUMBER 122 & 710	PARKING AREAS	FILE NO.	
DRAWN BY R.C.C.		HOEFT STATE PARK	
CHECKED BY	DESIGNED BY	R.C. Christian	
DATE	PROJECT SUPERINTENDENT	DATE	5-6-35
RECOMMENDED FOR CONSTRUCTION	SUBMITTED BY		
DATE	FIFTH REGIONAL INSPECTOR	DATE	SUPT. OF STATE PARKS
APPROVED FOR CONSTRUCTION	APPROVED BY		
DATE	FIFTH REGIONAL OFFICER NPS	DATE	MICH. CONSERVATION COMM.