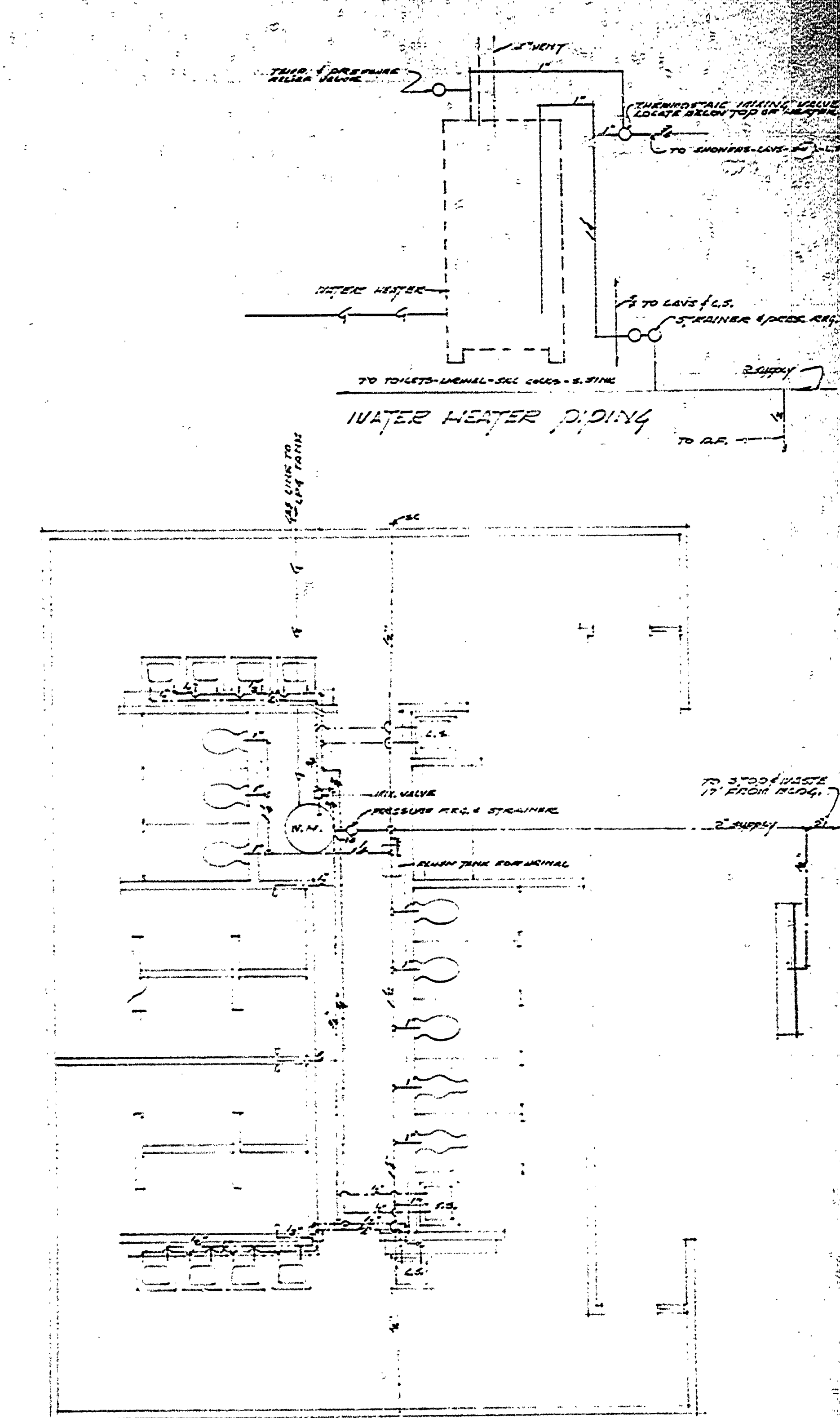
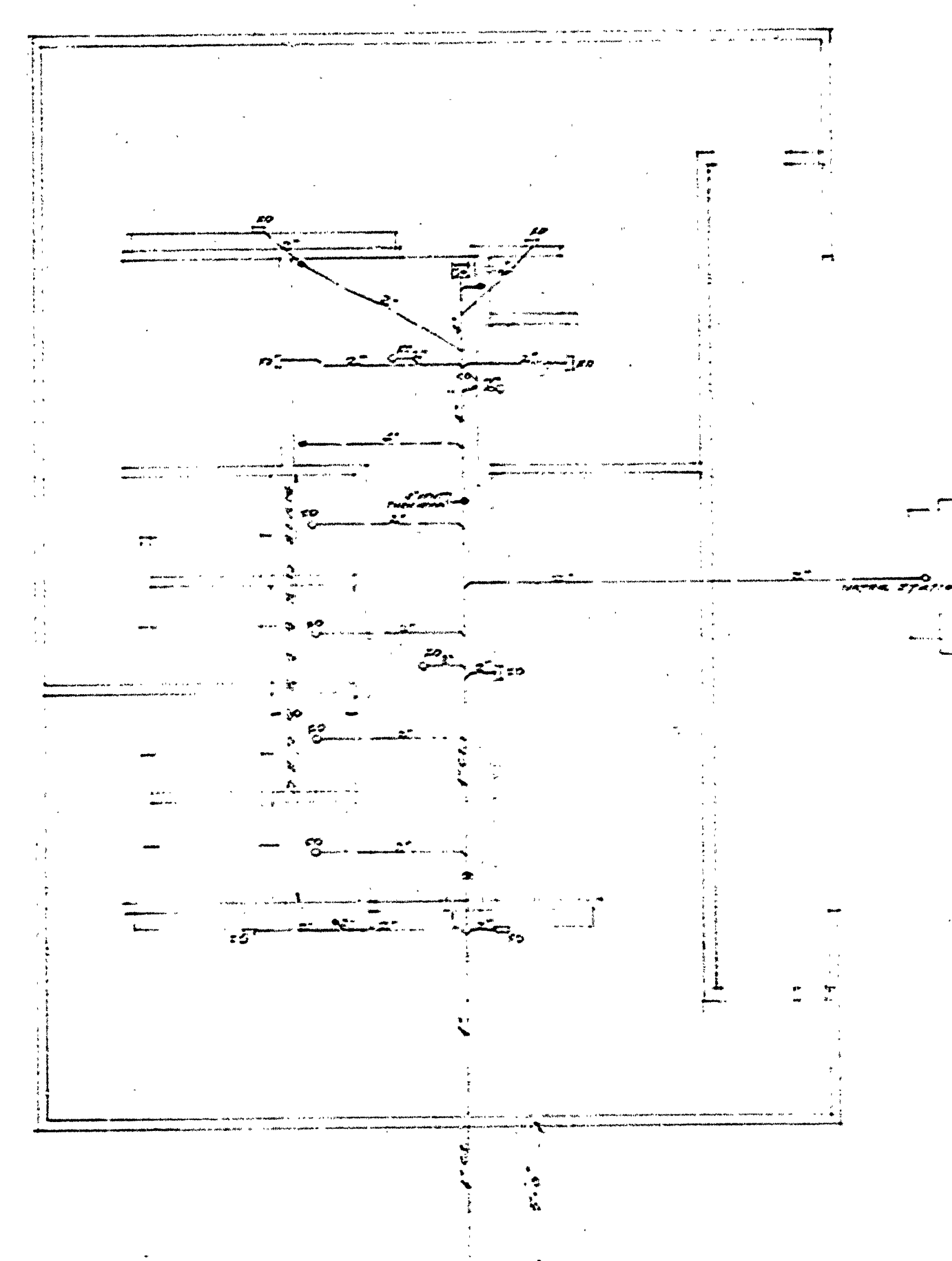
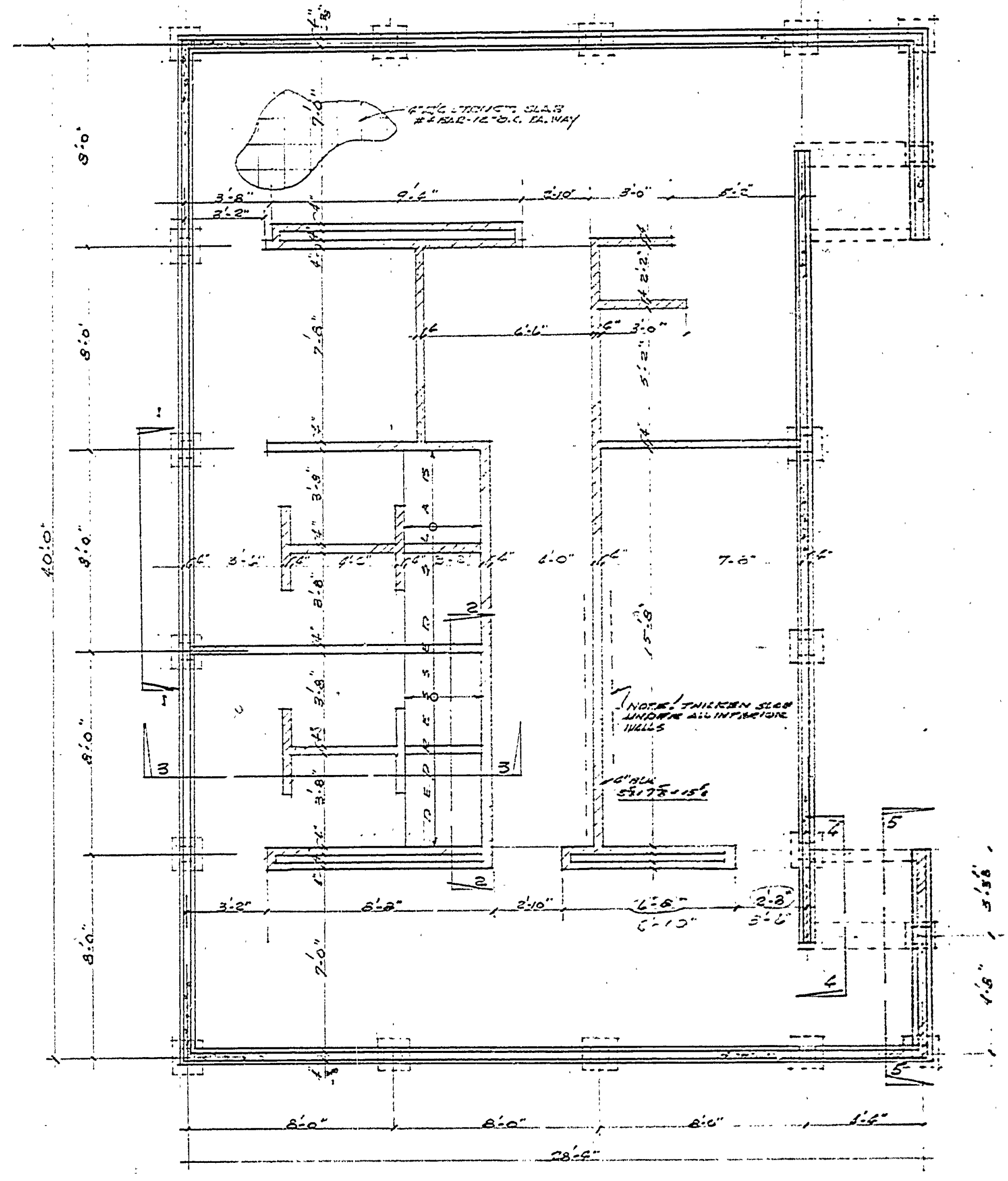
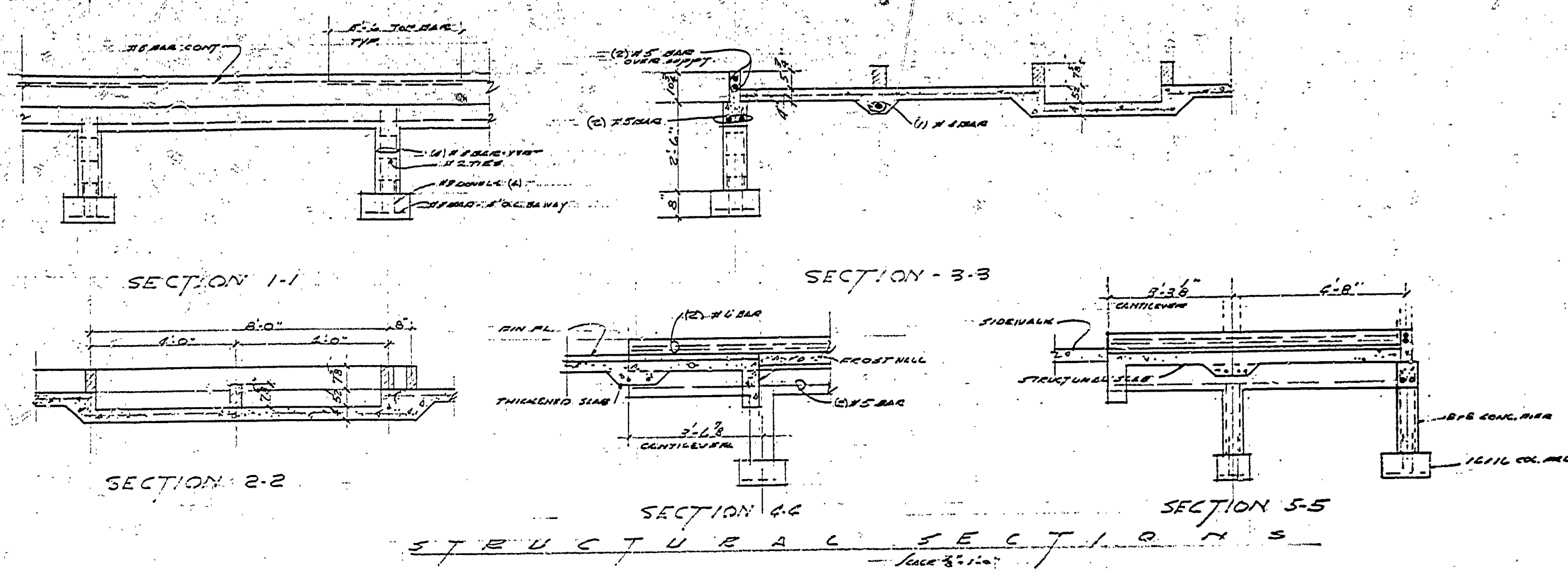


DESIGNED BY	DATE	REVIEWED	DATE	APPROVED	DATE	NO.	DATE BY	REVISIONS	DATE BY
M.A.C.	2-11-61	ARCHITECTURAL	8/26/61	<i>[Signature]</i>	1	1		4	
DRAWN BY	8-17-61	ENGINEERING	8-19-61	<i>[Signature]</i>	2	2		5	
CHECKED BY	8-17-61	LANDSCAPE	8-24-61	<i>[Signature]</i>	3	3		6	



FOUNDATION PLAN

PLUMBING PLAN

PLUMBING PLAN

FOUNDATION PLAN - PLUMBING PLANS		SHEET NO. 2	PLAN NO. A-105
P.H. HOEFT STATE PARK TOILET AND SHOWER BUILDING - 157		OF 5	

MICHIGAN
DEPARTMENT OF CONSERVATION
PARKS AND RECREATION DIVISION