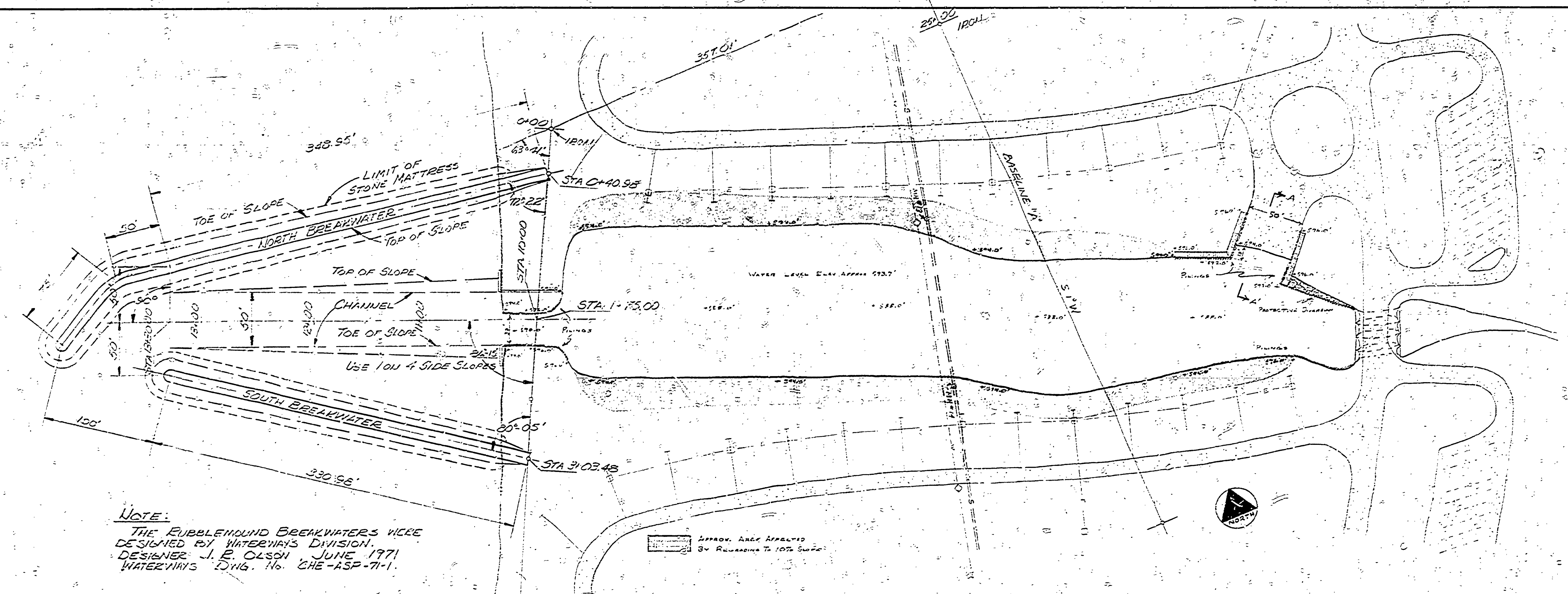


WHALETS LAKE



NOTE:
 THE RUBBLEMOUND BREAKWATERS WERE
 DESIGNED BY WATERWAYS DIVISION,
 DESIGNER: J. E. OLSON, JUNE 1971
 WATERWAYS DIV. No. CHE-ASP-71-1.

APPROX. AREA AFFECTED
 BY REVISIONS TO 10% SURFACE

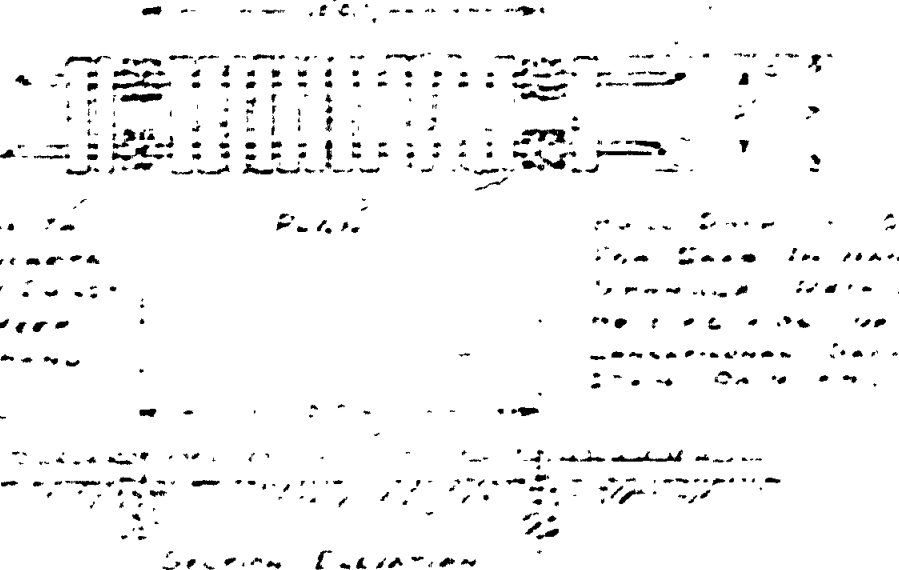
PLAN VIEW
 SCALE: 1" = 50'

APPROVED BY
 PARKS DIVISION
 Robert C. Dodge, 4/15/71
 CHIEF
 DATE

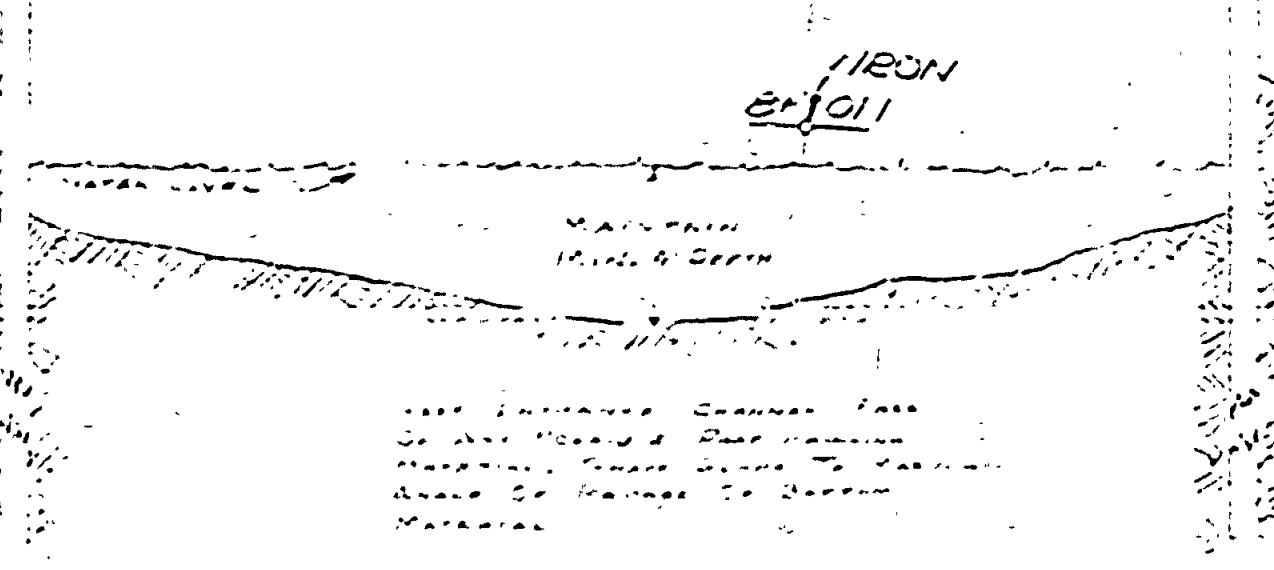
IN CHARGE, PARK DESIGN DATE 10-19-70

NOTES:

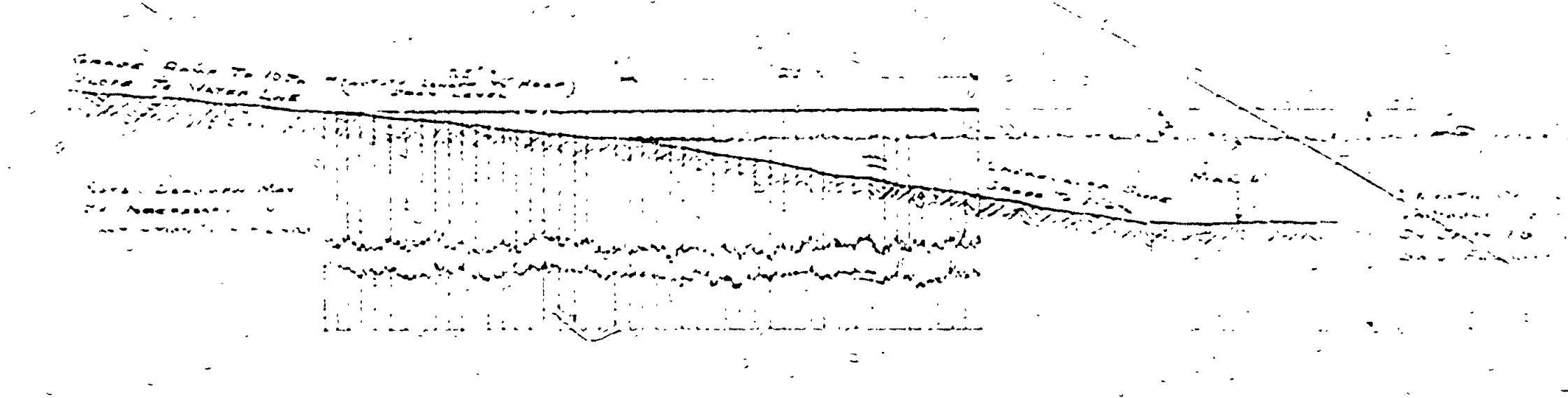
- 1. PAVING:** THE BOAT BASIN SHOULD BE PAVED PRIOR TO DREDGING TO FACILITATE SHAPING OF BOTTOM (SIDE MATERIAL). MAXIMUM DEPTH IN CENTER TO BE 6'. SIDE SLOPES SHOULD BE NATURAL ANGLES OF REPOSE WHICH IS APPROX. 3/4% DRAINAGE. CONSTRUCT A PROTECTIVE UNLINED AT RAMP SITE (SEE PLAN) TO PREVENT EROSION & UNDERCUTTING OF RAMP. SLOPE SHOULD BE 1:1.0. CONCRETE CURBS & DRAINAGE AS INDICATED. ALL DRAINAGE TO BE PAVED ON THE BANKS TO PREVENT EROSION (BE NO MORE THAN 2' ABOVE NORMAL WATER LINE). BEST TYPE OF WEARFIELD PAVING TO BE EMPLOYED. VIBRA PAVEMENT IS MADE TO "PAVING". REPAIRS MAY BE NECESSARY IN CONNECTION WITH PILING. BOAT BATTERIES SHOULD BE EMPLOYED WITH DRAINAGE TO HELP PREVENT ACCIDENTAL DAMAGE TO PILING. ALL WOOD MATERIAL TO BE TREATED WITH PENTACHLOROPHENOL. ALL MASONRY TO BE GALVANIZED OR CADMIUM PLATED.
- 2. FINISH RAMP CONSTRUCTION:** AS INDICATED PROVIDING A SETBACK OF 10' FROM NORMAL BANK EDGE, GRADE TO 10% SLOPE & GRAVEL. EMPLOY STANDARD RAMP CURB AS FAR AS NECESSARY INTO THE LOGGING.
- 3. REPAIRS:** REPAIRS SHOULD BE DONE INDICATED TO 1:1.0 (AREA AROUND PILING AT ENTRANCE CHANNEL & AT SE. END OF LAUNCH) WILL REMAIN UNPAVED (CONCRETE) & SET TO THEM. (SEE SPEC. CONTINUATION).
- 4. SPILL DRAINAGE:** DREDGED FILL OUT MATERIAL MAY BE USED AS FILL WHERE NEEDED. PROVIDED THAT DREDGED MATERIAL WILL NOT FLOW OVER INTO BOAT BASIN. WEARFIELD CURB MUST BE ELEVATED IN DRAINAGE & CUTTING SO AS NOT TO DRAIN WATER OR SEWAGE WINGS. (SEE PLAN & SCHEDULE FOR LOCATION & ELEVATIONS OF WEARFIELD CURB & INLET).
- 5. SECURITY:** PAVED MATTERS MAY NEED TO BE AVOIDED TO PREVENT PEN. ACCESS DANCES FOR CANOE.
- 6. UNUSUAL CONDITIONS:** COMPENSATION FOR UNUSUAL CONDITIONS IS AS INDICATED IN PLAN. SEE SPECIFICATION, LENGTH OF DRAIN FROM WATER LINE, TRIM PILING REQUIREMENTS ETC.



DOCK DETAIL
 SCALE: 1" = 10'



ENTRANCE CHANNEL PROFILE
 SCALE: 1" = 10'



RAMP-DOCK PROFILE 1-1
 SCALE: 1" = 10'

SEWER LINE PROFILE
 NO SCALE

| | | | | | | | | | | |
|-------------|--------------------------|----------|--------------------|-----------------------------|-------------|-----------|--|---|-------------------------|-----------------------------|
| SURVEYED BY | DRAWN BY PARKMAN | OCT 70 | NO. DATE BY | REVISIONS | NO. DATE BY | REVISIONS | MICHIGAN DEPARTMENT OF NATURAL RESOURCES | BOAT BASIN DEVELOPMENT ALOHA STATE PARK SHEET TITLE | AREA OR PARK ALOHA S.P. | PROJECT NO. |
| DESIGNED BY | CHECKED BY E.C.H. L.C.M. | 10-19-70 | 1. 9-27-71 E.C.H. | ADD RUBBLEMOUND BREAKWATERS | 2. | | | | | |
| DATE | | | 2. 10-19-70 E.C.H. | BREAKWATER EXTENSION | 4. | | | | | |
| | | | | | | | | | | SHEET 1 OF 3 PLAN NO. L-108 |