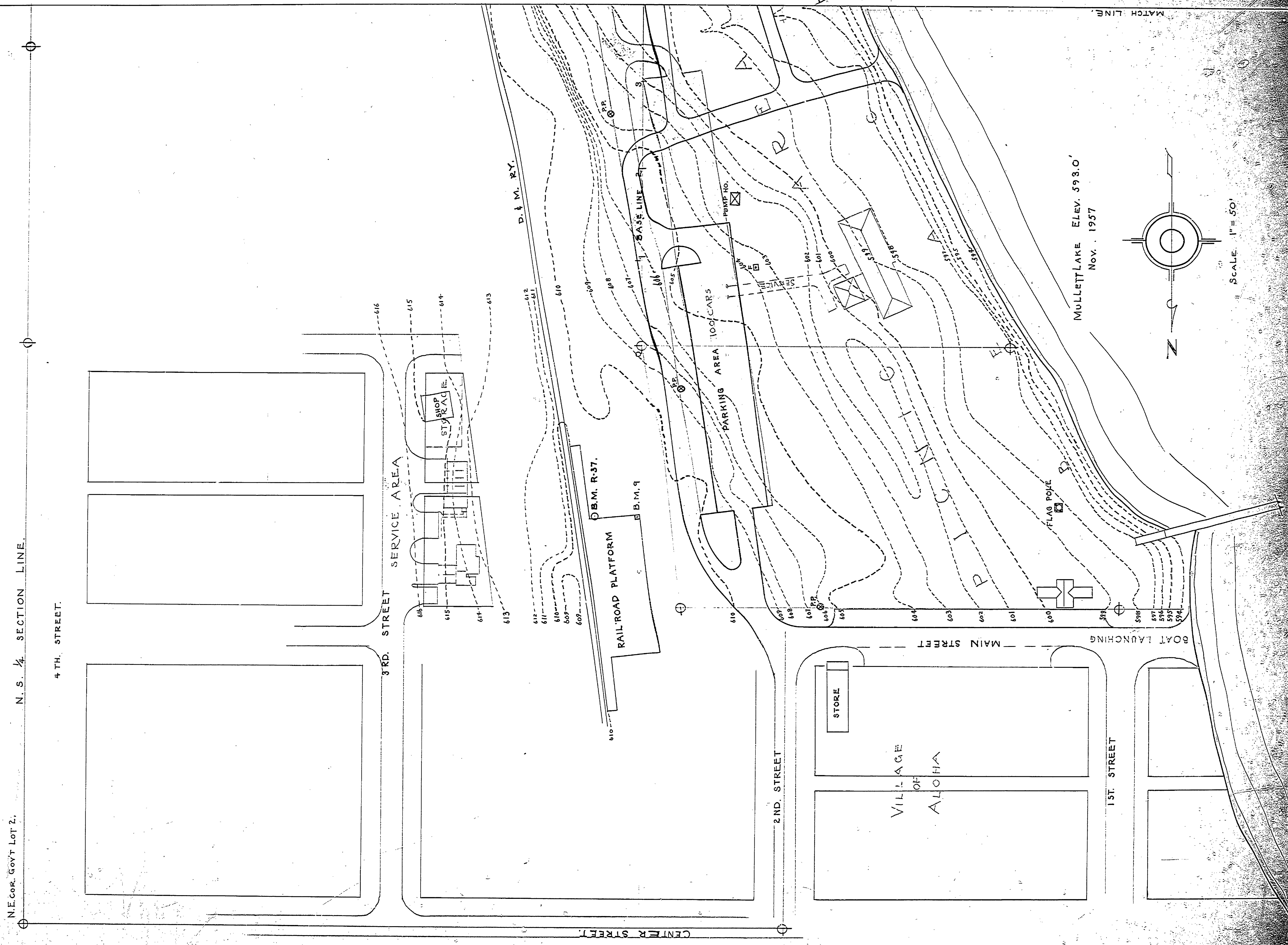


DRAWN BY L. E. L.	REVIEWED BY SECTIONS ARCHITECTURAL	DATE APPROVED BY	NO. DATE BY	REVISIONS
CHECKED BY L. E. L.	ENGINEERING	ASSISTANT CHIEF IN CHARGE OF DESIGN DATE	1 11 57	4
DATE JAN. 15, 1959.	LANDSCAPE		2 11 57	5
			3 11 57	6

B.M. R37, U.S.C. & G. S. ELEV. 610.901'
STANDARD DISK 0.84" BROKEN OFF.
PRESENT ELEV. 610.06'. LOCATED 6 YDS
SOUTHEAST OF RR STATION CHIMNEY AT
SOUTH END AND 7 YDS WEST OF WEST RAIL.

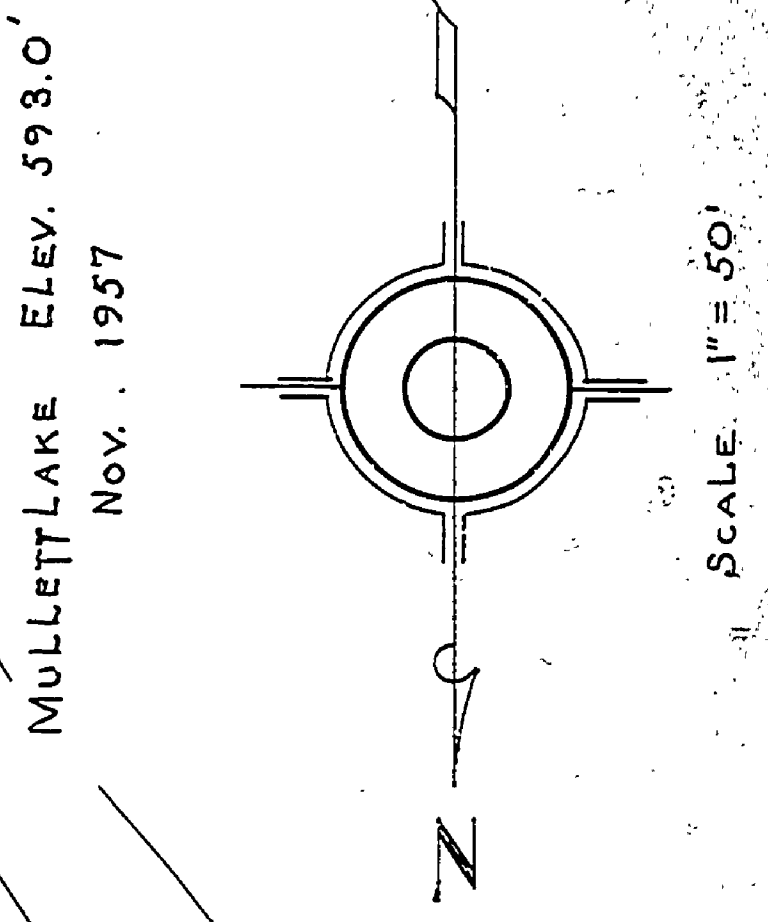
B.M. 9, EL. 610.91
LOCATED SOUTHWEST CORNER
RR PLATFORM A CHISELED 'X'
IN CENTER OF 4' SQUARE.



MICHIGAN
DEPARTMENT OF CONSERVATION
PARKS AND RECREATION DIVISION

ALOHA STATE PARK TOP MAP
WITH MASTER PLAN OVERLAY
SCALE 1" = 50'

SHEET
NO. 4
OF 4
PLANNING



MULLETT LAKE ELEV. 593.0'
NOV. 1957